

5 • PRODUCT SPECIFICATIONS

Temperature Wired Probe Range:
-58°F to 140°F (-50°C to 70°C)

Humidity Range:
20%-90% RH (relative humidity)

The thermometer will display "LO" or "HI" when temperature or humidity readings reach a level out of the range stated above.

Battery Requirements:
1 x "AA" alkaline battery (not included)

ACURITE
DESIGNED TO WORK FOR YOU™

Product Registration

To receive product information, register your product online. It's quick and easy!

Log on to http://www.chaneyinstrument.com/product_reg.htm



Please DO NOT return product to the retail store.

For technical assistance and product return information, please call Customer Care: **877-221-1252** Mon. - Fri. 8:00 A.M. to 4:45 P.M. (CST)

www.chaneyinstrument.com

LIMITED ONE YEAR WARRANTY

Chaney Instrument Company warrants that all products it manufactures to be of good material and workmanship and to be free of defects if properly installed and operated for a period of one year from date of purchase. REMEDY FOR BREACH OF THIS WARRANTY IS EXPRESSLY LIMITED TO REPAIR OR REPLACEMENT OF DEFECTIVE ITEMS. Any product which, under normal use and service, is proven to breach the warranty contained herein within ONE YEAR from date of sale will, upon examination by Chaney, and at its sole option, be repaired or replaced by Chaney. In all cases, transportation costs and charges for returned goods shall be paid for by the purchaser. Chaney hereby disclaims all responsibility for such transportation costs and charges. This warranty will not be breached, and Chaney will give no credit for products it manufactures which shall have received normal wear and tear, been damaged, tampered, abused, improperly installed, damaged in shipping, or repaired or altered by others than authorized representatives of Chaney.

THE ABOVE-DESCRIBED WARRANTY IS EXPRESSLY IN LIEU OF ALL OTHER WARRANTIES, EXPRESS OR IMPLIED, AND ALL OTHER WARRANTIES ARE HEREBY EXPRESSLY DISCLAIMED, INCLUDING WITHOUT LIMITATION THE IMPLIED WARRANTY OF MERCHANTABILITY AND THE IMPLIED WARRANTY OF FITNESS FOR A PARTICULAR PURPOSE. CHANEY EXPRESSLY DISCLAIMS ALL LIABILITY FOR SPECIAL, CONSEQUENTIAL OR INCIDENTAL DAMAGES, WHETHER ARISING IN TORT OR BY CONTRACT FROM ANY BREACH OF THIS WARRANTY. SOME STATES DO NOT ALLOW THE EXCLUSION OR LIMITATION OF INCIDENTAL OR CONSEQUENTIAL DAMAGES, SO THE ABOVE LIMITATION OR EXCLUSION MAY NOT APPLY TO YOU. CHANEY FURTHER DISCLAIMS ALL LIABILITY FROM PERSONAL INJURY RELATING TO ITS PRODUCTS TO THE EXTENT PERMITTED BY LAW. BY ACCEPTANCE OF ANY OF CHANEY'S EQUIPMENT OR PRODUCTS, THE PURCHASER ASSUMES ALL LIABILITY FOR THE CONSEQUENCES ARISING FROM THEIR USE OR MISUSE. NO PERSON, FIRM OR CORPORATION IS AUTHORIZED TO ASSUME FOR CHANEY ANY OTHER LIABILITY IN CONNECTION WITH THE SALE OF ITS PRODUCTS. FURTHERMORE, NO PERSON, FIRM OR CORPORATION IS AUTHORIZED TO MODIFY OR WAIVE THE TERMS OF THIS PARAGRAPH, AND THE PRECEDING PARAGRAPH, UNLESS DONE IN WRITING AND SIGNED BY A DULY AUTHORIZED AGENT OF CHANEY. THIS WARRANTY GIVES YOU SPECIFIC LEGAL RIGHTS, AND YOU MAY ALSO HAVE OTHER RIGHTS WHICH VARY FROM STATE TO STATE.

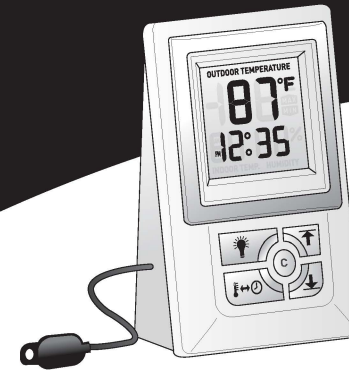
For in-warranty repair, please contact:
Customer Care Department
Chaney Instrument Company
965 Wells Street
Lake Geneva, WI 53147

Chaney Customer Care
877-221-1252
Mon-Fri 8:00 a.m. to 4:45 p.m. CST

www.chaneyinstrument.com

ACURITE
DESIGNED TO WORK FOR YOU™

Thermometer
with Wired Temperature Sensor
#00891A2



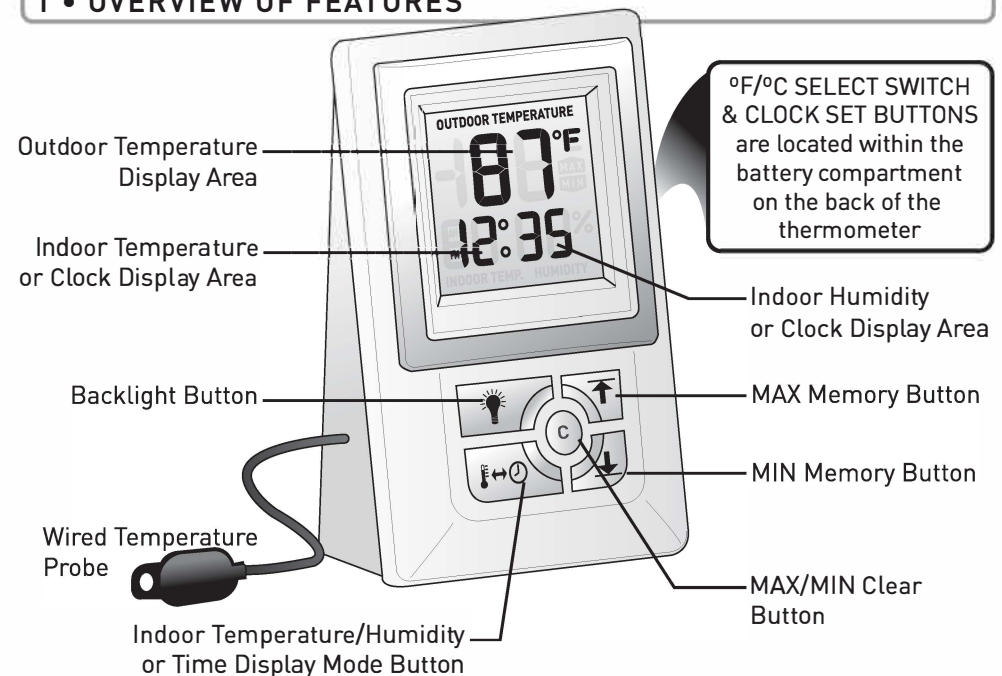
Instruction Manual

Package Contents:
(1) Thermometer
(1) Instruction Manual

Thank You for purchasing this ACURITE product. This Thermometer features a clock, indoor temperature, indoor humidity and a wired temperature sensor that can be routed outside to provide outdoor temperature readings. This thermometer also includes a MAX/MIN memory function and a backlight for easy low light viewing. Please read this manual to fully enjoy the benefits and features of this product. Please keep this manual for future reference.

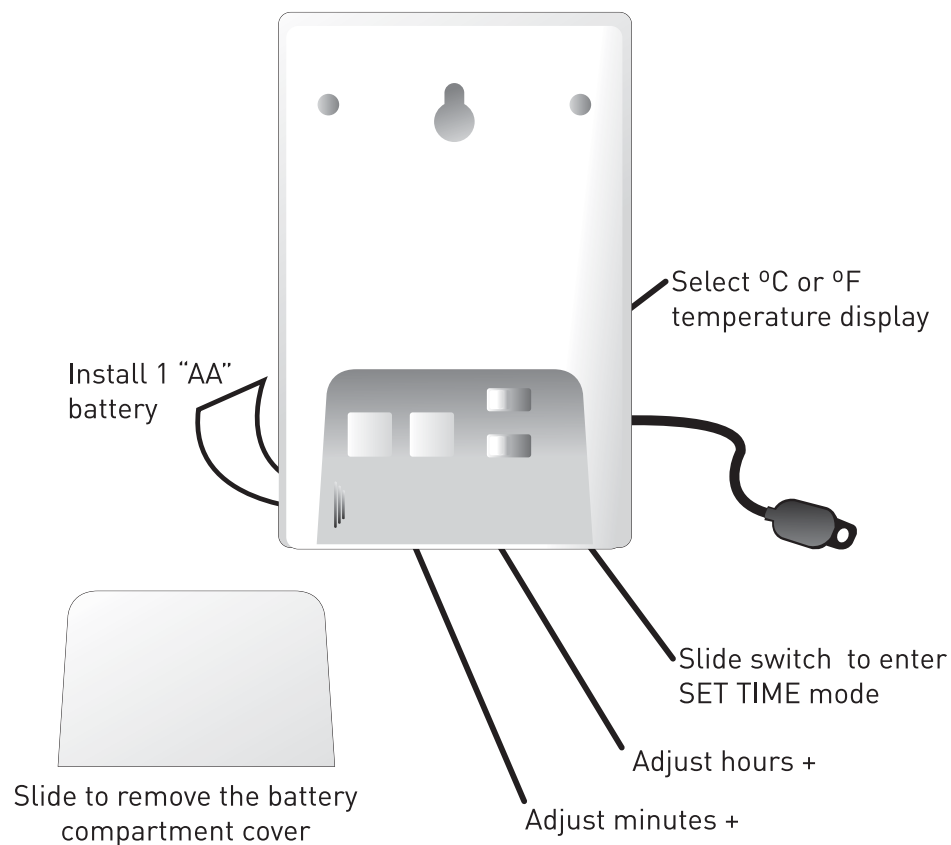
NOTE: A clear film is applied to the LCD at the factory that must be removed prior to using this product. Locate the clear tab and simply peel to remove.

1 • OVERVIEW OF FEATURES



2 • SETUP

Slide the battery compartment cover open and install 1 fresh "AA" battery as shown here. Make certain the "+" and "-" polarity markings on the battery match the markings within the battery compartment. Replace the battery with a fresh one when the display starts to fade or when the unit stops functioning.



PLEASE DISPOSE OF OLD OR DEFECTIVE BATTERIES IN AN ENVIRONMENTALLY SAFE WAY AND IN ACCORDANCE WITH YOUR LOCAL LAWS AND REGULATIONS.

BATTERY SAFETY: Follow the polarity (+/-) diagram in the battery compartment. Promptly remove dead batteries from the device. Dispose of used batteries properly. Only batteries of the same or equivalent type as recommended are to be used. DO NOT incinerate used batteries. DO NOT dispose of batteries in fire, as batteries may explode or leak. DO NOT mix old and new batteries or types of batteries (alkaline/standard). DO NOT use rechargeable batteries. DO NOT recharge non-rechargeable batteries. DO NOT short-circuit the supply terminals.

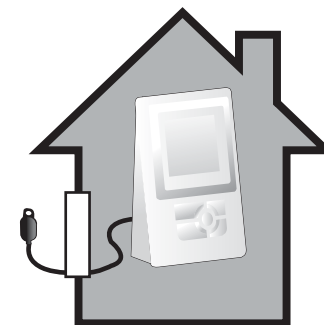
3 • PLACEMENT

Now that setup is complete, you must choose a location to place the indoor humidity monitor.

When considering placement options, be sure to choose an area free of water, dust and direct heat that may effect the accuracy of the humidity and temperature readings on the thermometer.

To observe outdoor temperatures, the wired temperature probe must be placed outside. The probe sensor then can be securely mounted to a surface utilizing the adhesive pad or the integrated screw/nail hole. Take care not to damage the sensor during mounting.

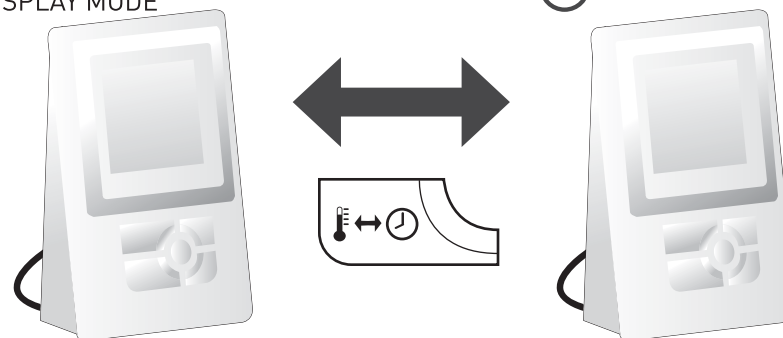
A common routing option would be to open a window, and route the wire through that opening. Then gently close the window frame on the sensor wire, making sure there are no sharp or binding surfaces that may sever or cut the wire or plastic coating.



4 • OPERATION

 INDOOR TEMPERATURE/HUMIDITY DISPLAY MODE

 TIME DISPLAY MODE



You may switch between viewing the current time or the indoor temperature by pressing the "Indoor Temperature/Clock Selection" Button.

You may view the MAX/MIN recorded values for temperatures and humidity by pressing the "MAX/MIN" button for temperature, or the "MAX/MIN" button for humidity. The MAX and MIN indicators will appear on the display. To clear the currently selected MAX/MIN values, press the "C" button.

NOTE: The thermometer will display "LO" or "HI" when temperature or humidity readings reach a level out of range (see "specifications" on rear cover).