



User Manual

FERREX[®]

706193

13W ENGRAVING TOOL



Product
Info



+ VIDEO

<https://help.tools/>

Read all safety warnings and all instructions thoroughly before operating this product.

Ensure you keep your manual in a safe place for future reference.

IM ed 4; 07/2021

QR codes take you where you want to go quickly and easily

Whether you require product information, spare parts or accessories, details on warranties or aftersales service, or if you want to watch a product demonstration video, our QR codes will take you there in no time at all.

What is a QR code?

A QR-code (QR=Quick Response) is a type of matrix that can be read with a smartphone camera and that contains a link to a website or contact details, for example.

Advantage: You are not required to manually enter a website address or contact details.

How it works

To scan the QR code, all you need is a smartphone with QR codes reader software and an Internet connection*. This type of software can be downloaded for free from your smartphone's app store.

Try it out now

Just scan the QR code with your smartphone and find out more about the Aldi product you have purchased*.

* Depending on your tariff you may be charged for the connection.



13W Engraving Tool



Warranty details

REGISTER YOUR PURCHASE AT www.aldi.com.au/en/about-aldi/product-registration/ TO KEEP UP-TO-DATE WITH IMPORTANT PRODUCT INFORMATION.

The product is guaranteed to be free from defects in workmanship and parts for a period of 36 months from the date of purchase. Defects that occur within this warranty period, under normal use and care, will be repaired, replaced or refunded at our discretion. The benefits conferred by this warranty are in addition to all rights and remedies in respect of the product that the consumer has under the Competition and Consumer Act 2010 and similar state and territory laws.

Our goods come with guarantees that cannot be excluded under the Australian Consumer Law. You are entitled to a replacement or refund for a major failure and for compensation for any other reasonably foreseeable loss or damage. You are also entitled to have the goods repaired or replaced if the goods fail to be of acceptable quality and the failure does not amount to a major failure.

AFTER SALES SUPPORT

  1300 889 028
(toll free)

e-mail: info.aldi@positecgroup.com
MODEL No.: PER13G1. A • 07/2021 • 706193



Contents

Pack contents /parts	2
Description of symbols	3
General safety warnings	4
Parts List	7
Operation	8
Maintenance	10
Warranty	12
FAQ/Troubleshooting	13
Technical specifications	14

Pack contents / parts

Congratulations on the purchase of your Ferrex® 13W Engraving Tool. When you open your packaging, first remove all items and check there are no parts damaged or missing. If you find anything wrong, do not operate the product until the parts have been replaced or the fault has been rectified. Failure to do so could result in serious personal injury.

First time users or inexperienced operators pay particular attention to the operation of the 13W Engraving Tool, including details of starting and stopping and correct use of the 13W Engraving Tool on pages 8-9, as well as the maintenance instructions on pages 10-11.

Intended use of the 13W Engraving Tool

NOTE: This product is for private domestic DIY use only.

It is not suitable for commercial or trade use.

This 13W Engraver is used for engraving or decorating all kinds of flexible materials, for example; soft metal, ceramic, glass, wood or plastics and stone. The tool is to be used only for its prescribed purpose. Any other use is deemed to be a case of misuse.

Contents of carton

- 1 x Engraving tool
- 1 x Tungsten carbide tip
- 4 x Templates
- 1 x Instruction manual
- 1 x Warranty card

Description of symbols

Description of symbols

The instruction manual or rating plate on your product may show symbols. These represent important information about the product or instructions on its use.



To reduce the risk of injury, user must read instruction manual



Wear ear protection
Wear eye protection
Wear breathing protection



Conforms to relevant standards for electrical safety and electromagnetic compatibility.



Double insulation



36 Months Warranty



The box is recyclable at kerbside.

General safety warnings



WARNING: Read all safety warnings, instructions, illustrations and specifications provided with this power tool. *Failure to follow all instructions listed below may result in electric shock, fire and/or serious injury.*

Save all warnings and instructions for future reference.

The term “power tool” in the warnings refers to your mains-operated (corded) power tool or battery-operated (cordless) power tool.

1) Work area safety

- a) Keep work area clean and well lit.** *Cluttered or dark areas invite accidents.*
- b) Do not operate power tools in explosive atmospheres, such as in the presence of flammable liquids, gases or dust.** *Power tools create sparks which may ignite the dust or fumes.*
- c) Keep children and bystanders away while operating a power tool.** *Distractions can cause you to lose control.*

2) Electrical safety

- a) Power tool plugs must match the outlet. Never modify the plug in any way. Do not use any adapter plugs with earthed (grounded) power tools.** *Unmodified plugs and matching outlets will reduce risk of electric shock.*
- b) Avoid body contact with earthed or grounded surfaces, such as pipes, radiators, ranges and refrigerators.** *There is an increased risk of electric shock if your body is earthed or grounded.*
- c) Do not expose power tools to rain or wet conditions.** *Water entering a power tool will increase the risk of electric shock.*
- d) Do not abuse the cord. Never use the cord for carrying, pulling or unplugging the power tool. Keep cord away from heat, oil, sharp edges or moving parts.** *Damaged or entangled cords increase the risk of electric shock.*
- e) When operating a power tool outdoors, use an extension cord suitable for outdoor use.** *Use of a cord suitable for outdoor use reduces the risk of electric shock.*
- f) If operating a power tool in a damp location is unavoidable, use a residual current device (RCD) protected supply.** *Use of an RCD reduces the risk of electric shock.*

3) Personal safety

- a) **Stay alert, watch what you are doing and use common sense when operating a power tool. Do not use a power tool while you are tired or under the influence of drugs, alcohol or medication.** *A moment of inattention while operating power tools may result in serious personal injury.*
- b) **Use personal protective equipment. Always wear eye protection.** *Protective equipment such as dust mask, non-skid safety shoes, hard hat, or hearing protection used for appropriate conditions will reduce personal injuries.*
- c) **Prevent unintentional starting. Ensure the switch is in the off-position before connecting to power source and/or battery pack, picking up or carrying the tool.** *Carrying power tools with your finger on the switch or energising power tools that have the switch on invites accidents.*
- d) **Remove any adjusting key or wrench before turning the power tool on.** *A wrench or a key left attached to a rotating part of the power tool may result in personal injury.*
- e) **Do not overreach. Keep proper footing and balance at all times.** *This enables better control of the power tool in unexpected situations.*
- f) **Dress properly. Do not wear loose clothing or jewellery. Keep your hair and clothing away from moving parts.** *Loose clothes, jewellery or long hair can be caught in moving parts.*
- g) **If devices are provided for the connection of dust extraction and collection facilities, ensure these are connected and properly used.** *Use of dust collection can reduce dust-related hazards.*
- h) **Do not let familiarity gained from frequent use of tools allow you to become complacent and ignore tool safety principles.** *A careless action can cause severe injury within a fraction of a second.*

4) Power tool use and care

- a) **Do not force the power tool. Use the correct power tool for your application.** *The correct power tool will do the job better and safer at the rate for which it was designed.*
- b) **Do not use the power tool if the switch does not turn it on and off.** *Any power tool that cannot be controlled with the switch is dangerous and must be repaired.*
- c) **Disconnect the plug from the power source and/or remove the battery pack, if detachable, from the power tool before making any adjustments, changing accessories, or storing power tools.** *Such preventive safety measures reduce the risk of starting the power tool accidentally.*

- d) **Store idle power tools out of the reach of children and do not allow persons unfamiliar with the power tool or these instructions to operate the power tool.** *Power tools are dangerous in the hands of untrained users.*
- e) **Maintain power tools and accessories. Check for misalignment or binding of moving parts, breakage of parts and any other condition that may affect the power tool's operation. If damaged, have the power tool repaired before use.** *Many accidents are caused by poorly maintained power tools.*
- f) **Keep cutting tools sharp and clean.** *Properly maintained cutting tools with sharp cutting edges are less likely to bind and are easier to control.*
- g) **Use the power tool, accessories and tool bits etc. in accordance with these instructions, taking into account the working conditions and the work to be performed.** *Use of the power tool for operations different from those intended could result in a hazardous situation.*
- h) **Keep handles and grasping surfaces dry, clean and free from oil and grease.** *Slippery handles and grasping surfaces do not allow for safe handling and control of the tool in unexpected situations.*

5) Service

- a) **Have your power tool serviced by a qualified repair person using only identical replacement parts.** *This will ensure that the safety of the power tool is maintained.*

6) Recommendation

- a) **It is recommended this 13W Engraver be used with a residual current device with rated residual current of 30mA or less.** *Use of an RCD reduces the risk of electric shock.*

Parts List

1. Engraving tip
2. Tip release cap
3. On/off switch
4. Stroke adjustment dial
5. Carrying loop
6. Power cord
7. Stencil x 4



Operation



WARNING!

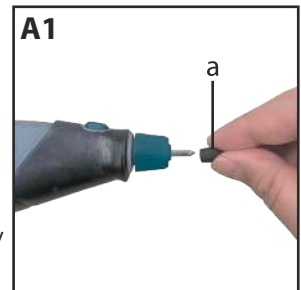
- Always wear safety glasses when using this tool.
- After 30 minutes continuous working, the tool needs to be stopped to cool down to room temperature before use again.
- Make sure the tip release cap is correctly tightened before operation.

1. On/off switch

To start the engraver, connect the power plug to the mains socket firstly.

Remove the protection cap (a) from the engraver tip (1). (Fig. A1)

To turn the engraver on, just press the on/off switch (3). To turn the engraver off, release the on/off switch (3). (Fig. A2)

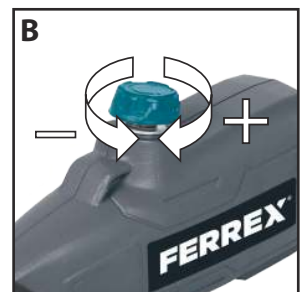
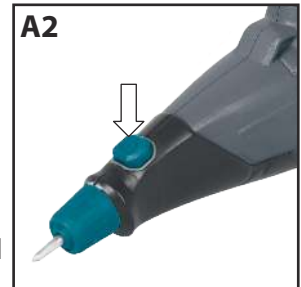


2. Setting the stroke depth

The stroke adjustment dial (4) located on the top of the engraver, controls the stroke length and therefore the depth of engraving. A low setting is usually sufficient for the most common applications.

- 1) For a fine mark, turn the stroke adjustment dial (4) clockwise.
- 2) For a deeper, thicker mark, turn the stroke adjustment dial (4) anti-clockwise. (Fig. B)

NOTE: It is recommended that you practice on scrap material before you start.



3. Using the engraver

- 1) Before using the engraver you must ensure there is an engraving tip (1) installed correctly. (see Replacing the Engraver Tip on page 10)

- 2) Connect the engraver power cord (6) to the power supply and hold the engraver firmly.
- 3) To turn the engraver on, press the on/off switch (3).
- 4) Hold the machine in a vertical position (almost 90° to the workpiece). Try to execute individual lines in one uniform movement without stopping if possible as later on it will be possible to make out paused and uneven movements on the engraved workpiece. Sketch out the outlines on the workpiece prior to engraving if necessary (e.g. with the aid of the stencils provided. It may also assist to clamp down the stencil onto the work piece to sketch the outlines) in order to make it possible to engrave more even lines.

NOTE: Do not press down hard while engraving, use light pressure while guiding the point over the work to be completed.



WARNING! The supplied engraving tip (1) is made of tungsten steel. It is therefore not suitable for engraving electronic media such as CDs, DVDs, etc. These materials and their readability could be damaged.



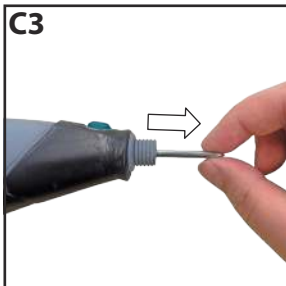
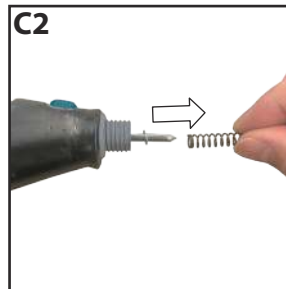
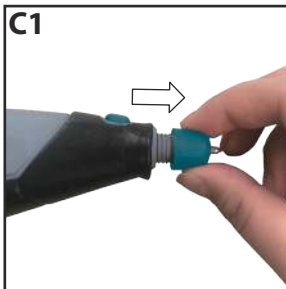
Maintenance

Replacing the engraver tip

Change the engraving tip as soon as it becomes worn and no longer delivers the desired engraving results.

! **WARNING!** Disconnect the engraver from the power supply before making any adjustments or undertaking maintenance procedures.

- 1) Remove the protection cap (a) from the engraver tip (1). (Fig. A1)
- 2) Loosen the tip release cap (2) by turning it anti-clockwise and then remove it from the engraver. (Fig. C1)
- 3) Remove the spring and washer from the engraver tip and then remove the engraver tip (1). (Fig. C2, C3)
- 4) To fit the new engraving tip (not supplied), slide the washer and spring onto a new engraving tip firstly. Then insert the new tip through the centre of the hole of the engraver, ensuring the tip fully enters the housing.
- 3) Tighten the tip release cap (2) fully by rotating it in a clockwise direction.





WARNING! Always ensure that the Engraver is switched off and the plug is removed from the power point before making any adjustments or undertaking maintenance procedures.

- 1) Use a soft brush to remove any accumulated dust. Wear safety glasses to protect your eyes whilst cleaning.
- 2) If the body of the engraver needs cleaning, wipe it with a soft damp cloth. A mild detergent can be used but never alcohol, petrol or other harsh cleaning agents.
- 3) Never use caustic agents to clean plastic parts. Keep the motor ventilation slots clean.



Caution: Water must never come into contact with the engraver.

General inspection

Regularly check that all the fixing screws are tight. They may vibrate loose over time.



WARNING! Remove the plug from the socket before carrying out any adjustment, servicing or maintenance.

There are no user serviceable parts in your Engraving Tool. Never use water or chemical cleaners to clean your Engraving Tool. Wipe clean with a dry cloth. Always store your Engraving tool in a dry place. Keep the motor ventilation slots clean. Keep all working controls free of dust. Occasionally you may see sparks through the ventilation slots.

This is normal and will not damage your Engraving Tool.

If the supply cord is damaged, it must be replaced by the manufacturer, its service agent or similarly qualified persons in order to avoid a hazard.

Storage

Store in a secure, dry place out of the reach of children. Do not place other objects on the product.

Residual risk

Even if you use the 13W Engraving Tool properly per the instructions provided and following all safety notes, there are always residual risks. The following risk may occur:

- Accidental Starting: Always remove the plug from the socket before carrying out any adjustment, servicing or maintenance. When not in use, store the device in a safe, dry, clean environment.

Reduce residual risks by using the 13W Engraving Tool with care and following all safety notes as well as other instructions.



Warranty

Your new FERREX® 13W Engraving Tool will more than satisfy your expectations. It has been manufactured under stringent FERREX® Quality Standards to meet superior performance criteria.

You will find your new FERREX® 13W Engraving Tool easy and safe to operate, and, with proper care, it will give you many years of dependable service.

CAUTION. Carefully read through this entire instruction manual before using your new FERREX® 13W Engraving Tool.

Take special care to heed the Cautions and Warnings.

Your FERREX® 13W Engraving Tool has many features that will make your job faster and easier. Safety, performance, and dependability have been given top priority in the development of this 13W Engraving Tool, making it easy to maintain and operate.

Use only FERREX® replacement parts for your product. Non-conforming parts or modifications made to parts will void your warranty.

Environmental protection



Recycle unwanted materials instead of disposing of them as waste. All tools, hoses and packaging should be sorted, taken to the local recycling centre and disposed of in an environmentally safe way.

Dispose of used engine oil in a manner that is compatible with the environment.

We suggest you take it in a sealed container to your local service station for reclamation. Do not throw it in the trash or pour it into the earth.

What your 3 year warranty means

Great care has gone into the manufacture of this product and it should therefore provide you with years of good service when used properly.

In the event of product failure within its intended use over the course of the first 3 years after the date of purchase, we will remedy the problem as quickly as possible once it has been brought to our attention. In the unlikely event of such an occurrence, or if you require any information about the product please contact us via our after sales support services, details of which can be found in this manual and on the product itself.

After Sales Support TEL: 1300 889 028 or email: info.aldi@positecgroup.com

FAQ/Troubleshooting

Frequently Asked Question

1. What is the function of the stroke adjustment dial?

The stroke adjustment dial (4) located on the top of the engraver, controls the stroke length and therefore the depth of engraving.

2. What do I do if I have an issue with my 13W Engraving Tool?

If you have any issues with your 13W Engraving Tool, please contact our Customer Service line on 1300 889 028.

For further inquiries or issues associated with your 13W Engraving Tool, call our Customer Service on 1300 889 028 or email us at info.aldi@positecgroup.com.

Troubleshooting

Fault	Cause	Remedy
Engraving too deep or too shallow.	The depth of engraving is not set properly.	Adjust the stroke adjustment dial (4) to a proper position.
Engraving tip (1) loosen or detached.	Tip release cap (2) not tightened.	Tighten the tip release cap (2).

For other issues not covered in this chart, please call Customer Service on 1300 889 028.

Technical Specifications

Power supply	230-240V~50Hz
Rated power	13W
Periodic duty	30s on, 90s off
No load speed	6000 /min
Engraving bit	Tungsten carbide tipped steel
Cord length	1.8 m
Tool weight	0.37 kg
Protection degree:	Class II
Product dimensions	165*45*65 mm

This 13W Engraver complies with the following Standards:

Safety: IEC 62841-1
AS/NZS 62841.1

EMC: EN 55014-1
EN 55014-2
EN 61000-3-2
EN 61000-3-3

This page is blank

This page is blank



ALDI guarantees that our exclusive brand products are developed to our stringent quality specifications. If you are not entirely satisfied with this product, please return it to your nearest ALDI store, within 60 days from the date of purchase, for a full refund or replacement, or take advantage of our after sales support by calling the supplier's Customer Service Hotline.



Made in China

Ferrex® is a registered trademark of ALDI Stores

DISTRIBUTED BY:

ALDI STORES

1 SARGENTS ROAD

MINCHINBURY NSW 2770

www.aldi.com.au

AFTER SALES SUPPORT



1300 889 028 (toll free)

e-mail: info.aldi@positecgroup.com

MODEL: PER13G1.A • 07/2021 • 706193

3

YEAR WARRANTY