

After-Sales service items



1 FAQ, disassembly video
after-sales@sevenpuppy.com

2 SEVENPUPPY LCD Includes all
the tools you need, plus a USERS
GUIDE on how to install, what to do
if you have problems.

3 Please turn off the power before assemble.Each connector must
be perfectly matched(you need to ensure that the connector are
perfectly connected) to ensure that the screen works properly.

4 If you encounter partial display defects, Screen doesn't start
properly,Black belt,Black Screen,lines,or camera malfunctions
during use. Please contact Our Customer Service Team to
resolve all your issues.

5 Provide you with a Brand New LCD,which will undergo multiple
functional tests in the factory, including camera, hinge,brightness
adjustment, automatic light sensing, keyboard light sensing.
We pay great attention to testing every screen.

MacBook Pro

13-inch Repair Manual

Install for MacBook Pro

A1706

A1708

A1989

A2159

A2251

A2289

A2338

omplimentary with package



Screwdriver:

T8*1 T5*1 T3*1 1.2*1 0.8*1 Blade*1

Step 1

Remove the pentalobe screws



Preparations before installation

- You must power down your Mac and disconnect the charger cable before starting this process.



⚠ Before proceeding, unplug and power down your MacBook. Close the display and lay it on a soft surface, top-side down.

- Use a P5 Pentalobe driver to remove the six screws securing the lower case:
 - Two 6.2 mm screws
 - Four 3.4 mm screws

Throughout this repair, **keep track of each screw** and make sure it goes back exactly where it came from to avoid damaging your device.

Step 2



- Insert your opening pick once again under the front edge of the lower case, near one of the two centermost screw holes.
- Give the pick a firm twist to pop free the third clip securing the lower case to the chassis.
- Repeat this procedure near the other of the two centermost screw holes, popping the fourth clip free.

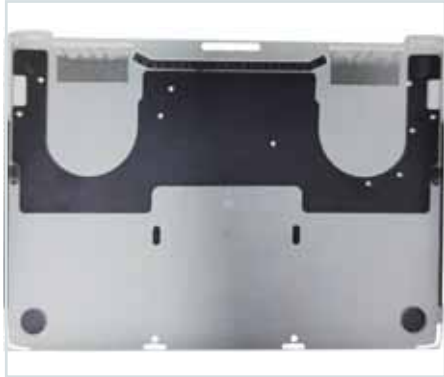


- Pull the lower case firmly towards the front of the MacBook (away from the hinge area) to separate the last of the clips securing the lower case.
- Pull first at one corner, then the other.

⚠ Pull to the side—not up.

This can require a lot of force.

Step 3 Remove the lower case



- Remove the lower case.
- To reinstall the lower case:
 - **Set it in place** and align the sliding clips near the display hinge. Press down and slide the cover toward the hinge. It should stop sliding as the clips engage.
 - When the sliding clips are fully engaged and the lower case looks correctly aligned, press down firmly on the lower case to engage the four hidden clips underneath. You should feel and hear them snap into place.



- Use the tip of a spudger to flip up the small black locking tab securing the cable in its connector.

Hazards of not disconnecting the battery connector.

- (1) The camera cannot be used
- (2) truetone function lost
- (3) May damage the motherboard, resulting in failure to operate normally

Step 4 Antenna Cable Assembly



- Remove the four 1.9 mm T3 Torx screws securing the plastic covers on top of the display hinges.
- Remove both plastic hinge covers.



- Remove the two 2.9 mm T3 Torx screws securing the aluminum cover on top of the main display cable.
- Remove the cover.



- Remove the two 1.7 mm T3 Torx screws securing the aluminum cover on top of the display cable flex connector.
- Remove the cover.

MacBook Pro

13-inch Repair Manual

Install for MacBook Pro

A1932

A2179

A2337

complimentary with package



Screwdriver:

T8*1 T5*1 T3*1 1.2*1 0.8*1 Blade*1

Step 1 Remove the pentalobe screws



Preparations before installation

You must power down your Mac and disconnect the charger cable before starting this process.



⚠ Before proceeding, unplug and power down your MacBook. Close the display and lay it on a soft surface, top-side down.

- Use a P5 Pentalobe driver to remove the ten screws securing the lower case:
 - Two 7.9 mm screws
 - Two 7.3 mm screws
 - Six 2.6 mm screws

Throughout this repair, **keep track of each screw** and make sure it goes back exactly where it came from to avoid damaging your device.

Step 2



- Insert your opening pick once again under the front edge of the lower case, near one of the two centermost screw holes.
- Give the pick a firm twist to pop free the third clip securing the lower case to the chassis.
- Repeat this procedure near the other of the two centermost screw holes, popping the fourth clip free.



- Pull the lower case firmly towards the front of the MacBook (away from the hinge area) to separate the last of the clips securing the lower case.
- Pull first at one corner, then the other.

⚠ Pull to the side—not up.

This can require a lot of force.

Step 3 Remove the lower case



- Remove the lower case.
- To reinstall the lower case:
 - **Set it in place** and align the sliding clips near the display hinge. Press down and slide the cover toward the hinge. It should stop sliding as the clips engage.
 - When the sliding clips are fully engaged and the lower case looks correctly aligned, press down firmly on the lower case to engage the four hidden clips underneath. You should feel and hear them snap into place.



- Use the tip of a spudger to flip up the small black locking tab securing the cable in its connector.

Hazards of not disconnecting the battery connector.

- (1) The camera cannot be used
- (2) truetone function lost
- (3) May damage the motherboard, resulting in failure to operate normally

Step 4 Antenna Cable Assembly



- Remove the four 1.9 mm T3 Torx screws securing the plastic covers on top of the display hinges.
- Remove both plastic hinge covers.



- Remove the two 1.5 mm T3 Torx screws securing the aluminum cover on top of the main display cable.
- Remove the cover.



- Remove the two 1.5 mm T3 Torx screws securing the aluminum cover on top of the display cable flex connector.
- Remove the cover.

Step 5



- Pry the display board flex cable straight up from its socket to disconnect it from the display board.



- Be careful with this step

This connector is very fragile and requires very light force when plugging and unplugging. And when installing, align and press to avoid failure. This glitch will cause black screen and camera not working properly. If black screen appears, please replace this connector cable.



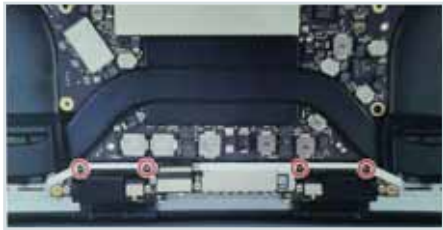
Carefully remove the antenna assembly, while simultaneously feeding the antenna cable bundle out from underneath the heat pipe.



- Remove the antenna cable assembly.

During reassembly, gently pinch the cable bundle together and guide it under the heat pipe into the correct position on the board. If needed, use your tools to help guide it through, but don't force it.

Step 6 Unscrew the display cable assembly



- Remove the four 3.9 mm T3 Torx screws securing the two display cable cover springs.

Remove the display cable assembly



- Grab the left side of the display cable assembly and pull it towards the bottom end of the MacBook and away from the cover spring.
- Use a pair of tweezers to pull the cover spring of the display cable out of its recess.
- Repeat this step with the right cover spring of the display cable assembly.



- Open the computer and place it facedown on a clean surface with the display hanging down over the edge of the table.

Step 7 Unscrew the hinge bolts

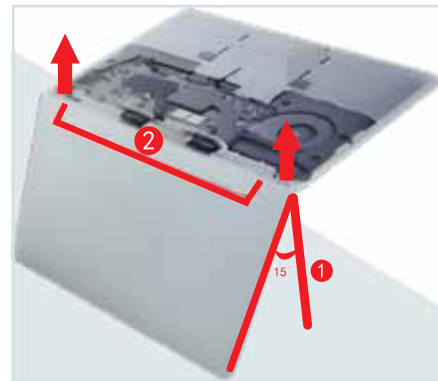


Fully open the screen and stand your MacBook Pro up on one side.

- While steadying the MacBook pro with your free hand, remove the three T8 Torx screws from the lower
- Remove the remaining three T8 Torx screws from the upper display bracket.



Use the T8 screwdriver to remove the six T8 screws from the display hinges.



(1) Pull the display toward you about 15 degrees

(2) Lift the display up and ensure that the hinges clear the edge of the top case



Keep a firm grip on both the screen and main body of the MacBook Pro: Either half can fall unexpectedly during this step.

- Push both halves of the MacBook Pro together so that the hinge brackets can be lifted clear of their recesses in the chassis.
- Push the main body of the MacBook Pro away from you while pulling the screen toward you to separate it.
- Remove the display/screen assembly, being careful not to snag it on any cables.



When replacing the screen, make sure to cut off all power (Battery on the motherboard, external power supply) to avoid burning the motherboard.

Important Notice : If you have to return the item, please pack our item back into our original package carefully, make sure it will not be broken. Ensuring that the package is intact and does not affect re-sale. Do not tear our warranty label stick on the item. So that we can identify the item.
THANKS!



1. Before installation, check whether the copper shield of the cable interface is loose or fallen off. Be sure to connect it securely.
2. Black screen troubleshooting instructions: The screen does not display on the computer or the screen is black or incompatible, please shut down and disconnect all the power, and then restart the computer to resolve the fault.