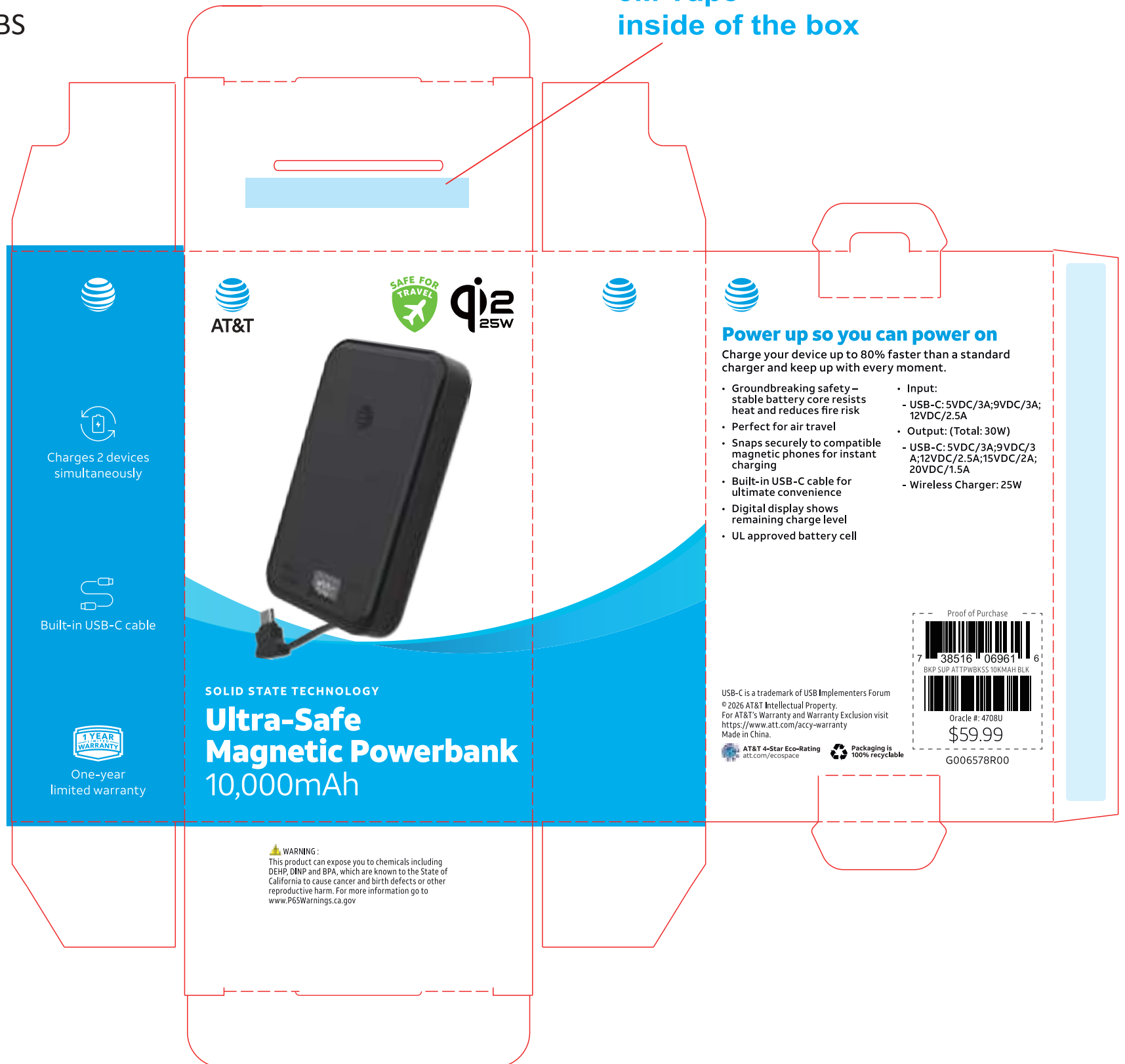


Dieline#:SCPCN0095

Size:70\*35\*115mm

400g SBS

3M Tape  
inside of the box



Charges 2 devices  
simultaneously



Built-in USB-C cable



One-year  
limited warranty

SOLID STATE TECHNOLOGY

**Ultra-Safe**  
**Magnetic Powerbank**  
10,000mAh

**WARNING:**

This product can expose you to chemicals including DEHP, DINP and BPA, which are known to the State of California to cause cancer and birth defects or other reproductive harm. For more information go to [www.P65Warnings.ca.gov](http://www.P65Warnings.ca.gov)

**Power up so you can power on**

Charge your device up to 80% faster than a standard charger and keep up with every moment.

- Groundbreaking safety – stable battery core resists heat and reduces fire risk
- Perfect for air travel
- Snaps securely to compatible magnetic phones for instant charging
- Built-in USB-C cable for ultimate convenience
- Digital display shows remaining charge level
- UL approved battery cell
- Input:
  - USB-C: 5VDC/3A; 9VDC/3A; 12VDC/2.5A
- Output: (Total: 30W)
  - USB-C: 5VDC/3A; 9VDC/3A; 12VDC/2.5A; 15VDC/2A; 20VDC/1.5A
  - Wireless Charger: 25W

Proof of Purchase



Oracle #: 4708U  
\$59.99

G006578R00

USB-C is a trademark of USB Implementers Forum  
© 2026 AT&T Intellectual Property.  
For AT&T's Warranty and Warranty Exclusion visit  
<https://www.att.com/accy-warranty>  
Made in China.



USB-C is a trademark of USB Implementers Forum

The "Qi2" symbol is a trademark of the Wireless Power Consortium

**This device complies with Part 15 of the FCC Rules.**

Operation is subject to the following two conditions:

- (1) this device may not cause harmful interference, and
- (2) this device must accept any interference received, including interference that may cause undesired operation.

**CAUTION:** Changes or modifications not expressly approved by the party responsible for compliance could void the user's authority to operate this equipment.

**Note:** This equipment has been tested and found to comply with the limits for a Class B digital device, pursuant to Part 15 of the FCC Rules. These limits are designed to provide reasonable protection against harmful interference in a residential installation. This equipment generates, uses and can radiate radio frequency energy and, if not installed and used in accordance with the instructions, may cause harmful interference to radio communications. However, there is no guarantee that interference will not occur in a particular installation.

If this equipment does cause harmful interference to radio or television reception, which can be determined by turning the equipment off and on, the user is encouraged to try to correct the interference by one or more of the following measures:

- Reorient or relocate the receiving antenna.
- Increase the separation between the equipment and receiver.
- Connect the equipment to an outlet on a circuit different from that to which the receiver is connected.
- Consult the dealer or an experienced radio/TV technician for help.

**RF Exposure warnings:** The device has been evaluated to meet general RF exposure requirement. The device can be used in portable exposure condition without restriction.