

# Butterfly Effect

Item ref: 151.744UK

3 in 1 LED and Laser Effect light

User Manual

Please read through this manual thoroughly before use, any damage caused by misuse of product will not be covered by warranty.

A compact 3-in-1 light effect combining a colourful butterfly effect, 6x 1W RGB PARs and Dual colour Laser in one convenient fixture. Easy to setup and use via an array of integrated automatic programs or sound to light. More precise control is provided via either 13-channel DMX connection or the included IR remote control.



## In the box:

Your Butterfly Effect light should arrive with you in a single carton in good condition. The carton should contain

1 x main unit with bracket, 1x IR remote control, 1 x UK IEC mains lead and 1 x manual.

## Warning:

To prevent risk of fire or electric shock, do not expose the unit to rain or damp environments. In the event of a spillage, disconnect the mains and allow the unit to dry out naturally. Qualified personnel should then check the unit before continuing use.



**Please do not open cover, contains high voltage. This product is not serviceable or repairable by the end user. Please refer to qualified personnel for service and repair.**



### Caution: Laser radiation

Avoid pointing directly towards eyes. Laser output can cause injury if viewed directly. This product is a Class 3B laser and should only be installed and used by persons who are trained in the management of laser radiation and are able to operate in accordance within the guidance given by the Health and Safety Executive (HSE): "The Safety of Laser Lighting Displays". Information on this guidance can be found on the following website: <https://www.hse.gov.uk/pubns/indq224.htm>



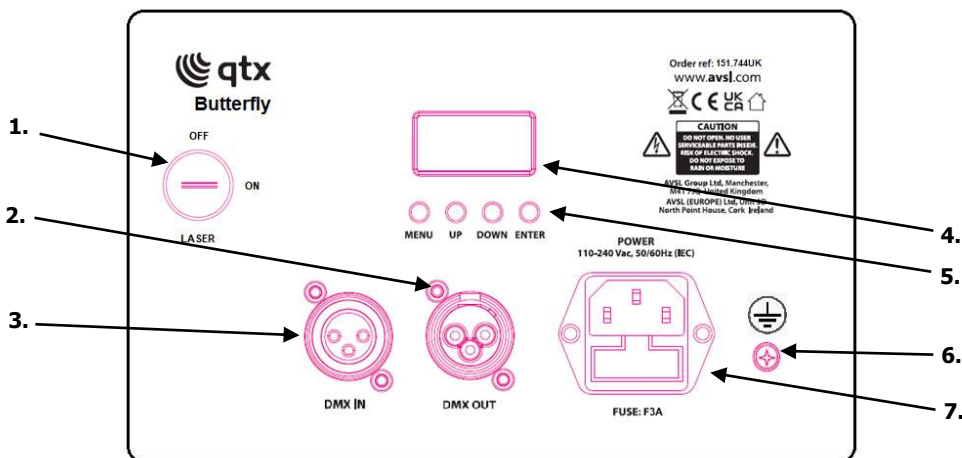
### Placement:

- Use the included mounting bracket to fix to a stand or lighting truss.
- Use secondary safety fixings if mounting overhead.
- Keep away from damp or dusty environments.
- Ensure adequate airflow around the fixture housings.
- Ensure adequate access to controls and connections.
- Do not aim LED or laser output directly into line of sight, as this can result in eye injury.

### Cleaning:

- Use a soft cloth with a neutral detergent to clean the casing as required.
- Use a vacuum cleaner to clear ventilation grilles of any dust or debris build-ups.
- Do not use strong solvents for cleaning the unit.

### Rear panel controls:



1. Laser Key
2. DMX output
3. DMX input
4. LCD display

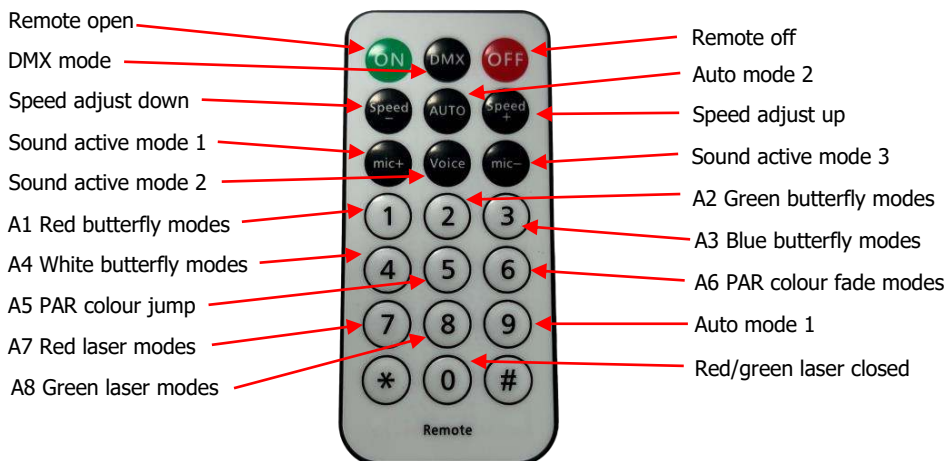
5. Control panel
6. Earth screw (do not remove)
7. Power input (IEC)

## Manual control menu:

Press the **"MENU"** button to enter the settings menu.  
 Press **"UP"** and **"DOWN"** buttons to navigate through various setting functions.  
 Press **"ENTER"** button to confirm the desired setting.

Menu	Menu level 2	Description
d001	d001 - d512	DMX address settings
A1	A1 1 - A1 9	Red butterfly effect (slow to fast)
	A1 A	Red butterfly effect open
A2	A2 1 - A2 9	Green butterfly effect (slow to fast)
	A2 A	Green butterfly effect open
A3	A3 1 - A3 9	Blue butterfly effect (slow to fast)
	A3 A	Blue butterfly effect open
A4	A4 1 - A4 9	White butterfly effect (slow to fast)
	St0 - St9	White butterfly effect open
A5	A5 1 - A5 9	PAR Colour jump (slow to fast)
A6	A6 1 - A6 9	PAR Colour fade (slow to fast)
A7	A7 0	Red laser closed
	A7 1 - A7 9	Red laser (slow to fast)
A8	A8 0	Green laser closed
	A8 1 - A8 9	Green laser (slow to fast)
C1	C1 1 - C1 9	Auto mode 1 (slow to fast)
C2	C2 1 - C2 9	Auto mode 2 (slow to fast)
S1	S1 1 - S1 9	Sound activated mode 1 (slow to fast)
S2	S2 1 - S2 9	Sound activated mode 2 (slow to fast)
S3	S3 1 - S3 9	Sound activated mode 3 (slow to fast)

## Remote control:



## DMX mode:

The Butterfly Effect light can be controlled by DMX signal, simply connect the DMX signal source to the DMX input on the unit via a balanced XLR lead. Extra fixtures can be controlled by the same DMX signal by looping through the DMX out on the unit. To enter DMX mode, select d001 from the menu and confirm the correct start address by using the "UP" and "DOWN" buttons and "ENTER". The selected DMX address will begin to flash once it's received the DMX signal from the controller. This unit has 13 DMX channels as indicated in the table below:

Channel	Channel Value	Function Description
CH1	0-255	Total dimming
CH2	0-255	Butterfly red dimming
CH3	0-4	Butterfly green dimming
CH4	5-255	Butterfly blue dimming
CH5	0-255	Butterfly white dimming
CH6	0-4	Butterfly without strobe
	5-255	Butterfly strobe, the speed is from slow to fast
CH7	0-4	Butterfly motor stationary
	5-127	Butterfly motor position
	128-255	Butterfly motor auto, the motor speed is from slow to fast
CH8	0-127	PAR colour jump changing
	128-255	PAR colour fade changing
CH9	0-255	The speed of wash color changing is from slow to fast
CH10	0-255	The Laser red light is open
CH11	0-255	The Laser green light is open
CH12	0-4	The Laser motor stationary
	5-255	The Laser motor auto, the speed is from slow to fast
CH13	0-49	Open CH1-CH12
	50-129	Auto modes 1 & 2
	130-255	Sound modes 1, 2 & 3

## Specifications:

<b>Power supply</b>	110-240Vac, 50/60Hz (IEC)
<b>Power consumption</b>	38W
<b>Fuse rating</b>	F5A
<b>Modes</b>	Auto, Sound, DMX512, Master/Slave, Remote Control
<b>DMX channels</b>	13CH
<b>Effect LEDs</b>	2pcs 15W Butterfly effect, 6pcs 1W PAR

<b>Connections</b>	Power in (IEC), DMX in/out (3pin XLR)
<b>Laser power</b>	Red: 100mw & Green: 50mw
<b>Laser class</b>	3B
<b>Remote battery</b>	CR2025 (supplied)
<b>Dimensions</b>	130 x 200 x 240mm
<b>Weight</b>	1.18Kg

### Troubleshooting:

No power (mains)	Check mains voltage is correct and outlet is switched on
	Check IEC lead and fuse (if fuse continually blows, refer to your dealer)
No light output	Check control panel mode settings
	Check DMX settings from controller (dimmer levels, blackout etc.)
No strobe output	Check strobe settings on control panel or from DMX controller
No Laser output	Check laser key on rear panel is turned on
Unresponsive to DMX	Check that unit is in DMX mode and ensure the A on the DMX address flashes to confirm it's receiving a DMX signal
	Check DMX controller is not set to black out
	Check DMX controller is on correct fixture/page
	Check master dimmer value
	Check correct DMX address is set
	Check DMX connection and leads
Overheating/cutting out	Ensure adequate ventilation and unit is not too close to a heat source



This product is classed as Electrical or Electronic equipment and should not be disposed with other household or commercial waste at the end of its useful life. The goods must be disposed of according to your local council guidelines.

### Errors and omissions excepted.

Copyright© 2024 AVSL Group Ltd, Unit 2 Bridgewater Park,  
Taylor Road, Trafford Park, Manchester. M41 7JQ.

AVSL (Europe) Ltd, Unit 3D North Point House,  
North Point Bus. Park, New Mallow Road, Cork, Ireland.