

# Owner's Manual & Safety Instructions

Save This Manual Keep this manual for the safety warnings and precautions, assembly, operating, inspection, maintenance and cleaning procedures. Write the product's serial number in the back of the manual near the assembly diagram (or month and year of purchase if product has no number). Keep this manual and the receipt in a safe and dry place for future reference.

21h

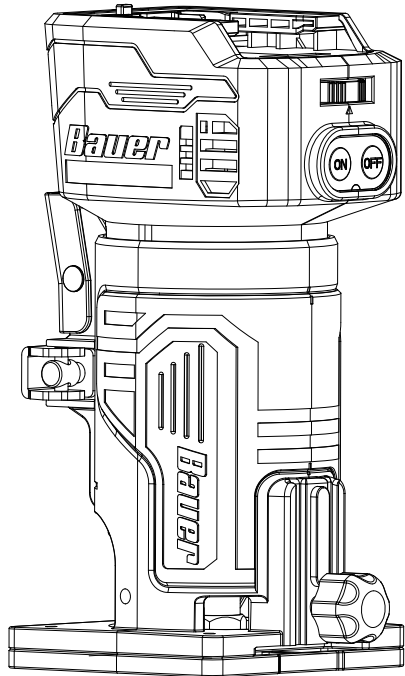
# **Bauer**™ 21121CR-B

## BRUSHLESS

# 20V

## HYPERMAX™ LITHIUM

For Best Results,  
Use 3.0 Amp Hour Battery  
(Sold Separately)



## 20V VARIABLE SPEED COMPACT ROUTER

Visit our website at: <http://www.harborfreight.com>  
Email our technical support at: [productsupport@harborfreight.com](mailto:productsupport@harborfreight.com)

**58803**

When unpacking, make sure that the product is intact and undamaged. If any parts are missing or broken, please call 1-888-866-5797 as soon as possible.

Copyright© 2021 by Harbor Freight Tools®. All rights reserved.  
No portion of this manual or any artwork contained herein may be reproduced in any shape or form without the express written consent of Harbor Freight Tools. Diagrams within this manual may not be drawn proportionally. Due to continuing improvements, actual product may differ slightly from the product described herein. Tools required for assembly and service may not be included.

### **⚠WARNING**

Read this material before using this product.  
Failure to do so can result in serious injury.  
**SAVE THIS MANUAL.**

# Table of Contents

Safety .....	2	Maintenance .....	11
Specifications .....	6	Parts List and Diagram .....	14
Setup .....	7	Warranty .....	16
Operation .....	8		



WARNING SYMBOLS AND DEFINITIONS	
	This is the safety alert symbol. It is used to alert you to potential personal injury hazards. Obey all safety messages that follow this symbol to avoid possible injury or death.
	Indicates a hazardous situation which, if not avoided, will result in death or serious injury.
	Indicates a hazardous situation which, if not avoided, could result in death or serious injury.
	Indicates a hazardous situation which, if not avoided, could result in minor or moderate injury.
	Addresses practices not related to personal injury.

## IMPORTANT SAFETY INFORMATION

### General Power Tool Safety Warnings

#### WARNING

Read all safety warnings, instructions, illustrations and specifications provided with this power tool. Failure to follow all instructions listed below may result in electric shock, fire and/or serious injury.

Save all warnings and instructions for future reference.

The term "power tool" in the warnings refers to your mains-operated (corded) power tool or battery-operated (cordless) power tool.

1. **Work area safety**
  - a. **Keep work area clean and well lit.**  
*Cluttered or dark areas invite accidents.*
  - b. **Do not operate power tools in explosive atmospheres, such as in the presence of flammable liquids, gases or dust.** *Power tools create sparks which may ignite the dust or fumes.*
  - c. **Keep children and bystanders away while operating a power tool.** *Distractions can cause you to lose control.*

## 2. Electrical safety

- a. **Power tool plugs must match the outlet. Never modify the plug in any way. Do not use any adapter plugs with earthed (grounded) power tools.** *Unmodified plugs and matching outlets will reduce risk of electric shock.*
- b. **Avoid body contact with earthed or grounded surfaces, such as pipes, radiators, ranges and refrigerators.** *There is an increased risk of electric shock if your body is earthed or grounded.*
- c. **Do not expose power tools to rain or wet conditions.** *Water entering a power tool will increase the risk of electric shock.*
- d. **Do not abuse the cord. Never use the cord for carrying, pulling or unplugging the power tool. Keep cord away from heat, oil, sharp edges or moving parts.** *Damaged or entangled cords increase the risk of electric shock.*
- e. **When operating a power tool outdoors, use an extension cord suitable for outdoor use.** *Use of a cord suitable for outdoor use reduces the risk of electric shock.*
- f. **If operating a power tool in a damp location is unavoidable, use a ground fault circuit interrupter (GFCI) protected supply.** *Use of a GFCI reduces the risk of electric shock.*

## 3. Personal safety

- a. **Stay alert, watch what you are doing and use common sense when operating a power tool. Do not use a power tool while you are tired or under the influence of drugs, alcohol or medication.** *A moment of inattention while operating power tools may result in serious personal injury.*
- b. **Use personal protective equipment. Always wear eye protection.** *Protective equipment such as dust mask, non-skid safety shoes, hard hat, or hearing protection used for appropriate conditions will reduce personal injuries.*
- c. **Prevent unintentional starting. Ensure the switch is in the off-position before connecting to power source and/or battery pack, picking up or carrying the tool.** *Carrying power tools with your finger on the switch or energizing power tools that have the switch on invites accidents.*
- d. **Remove any adjusting key or wrench before turning the power tool on.** *A wrench or a key left attached to a rotating part of the power tool may result in personal injury.*
- e. **Do not overreach. Keep proper footing and balance at all times.** *This enables better control of the power tool in unexpected situations.*

- f. **Dress properly. Do not wear loose clothing or jewelry. Keep your hair, clothing and gloves away from moving parts.** *Loose clothes, jewelry or long hair can be caught in moving parts.*
- g. **If devices are provided for the connection of dust extraction and collection facilities, ensure these are connected and properly used.** *Use of dust collection can reduce dust-related hazards.*
- h. **Do not let familiarity gained from frequent use of tools allow you to become complacent and ignore tool safety principles.** *A careless action can cause severe injury within a fraction of a second.*
- i. Only use safety equipment that has been approved by an appropriate standards agency. Unapproved safety equipment may not provide adequate protection. Eye protection must be ANSI-approved and breathing protection must be NIOSH-approved for the specific hazards in the work area.
- j. Avoid unintentional starting. Prepare to begin work before turning on the tool.
- k. Do not lay the tool down until it has come to a complete stop. Moving parts can grab the surface and pull the tool out of your control.
- l. When using a handheld power tool, maintain a firm grip on the tool with both hands to resist starting torque.
- m. Do not depress the spindle lock when starting or during operation.
- n. Do not leave the tool unattended when it is plugged into an electrical outlet the Battery Pack is connected. Turn off the tool, and unplug it from its electrical outlet remove the Battery Pack before leaving.
- o. This product is not a toy. Keep it out of reach of children.
- p. People with pacemakers should consult their physician(s) before use. Electromagnetic fields in close proximity to heart pacemaker could cause pacemaker interference or pacemaker failure. In addition, people with pacemakers should:
  - Avoid operating alone.
  - Do not use with Trigger locked on.
  - Properly maintain and inspect to avoid electrical shock.
  - Properly ground power cord.
 Ground Fault Circuit Interrupter (GFCI) should also be implemented – it prevents sustained electrical shock.

- q. The warnings, precautions, and instructions discussed in this instruction manual cannot cover all possible conditions and situations that may occur. It must be understood by the operator that common sense and caution are factors which cannot be built into this product, but must be supplied by the operator.
4. **Power tool use and care**
- Do not force the power tool. Use the correct power tool for your application.** *The correct power tool will do the job better and safer at the rate for which it was designed.*
  - Do not use the power tool if the switch does not turn it on and off.** *Any power tool that cannot be controlled with the switch is dangerous and must be repaired.*
  - Disconnect the plug from the power source and/or remove the battery pack, if detachable, from the power tool before making any adjustments, changing accessories, or storing power tools.** *Such preventive safety measures reduce the risk of starting the power tool accidentally.*
  - Store idle power tools out of the reach of children and do not allow persons unfamiliar with the power tool or these instructions to operate the power tool.** *Power tools are dangerous in the hands of untrained users.*
  - Maintain power tools and accessories. Check for misalignment or binding of moving parts, breakage of parts and any other condition that may affect the power tool's operation. If damaged, have the power tool repaired before use.** *Many accidents are caused by poorly maintained power tools.*
  - Keep cutting tools sharp and clean.** *Properly maintained cutting tools with sharp cutting edges are less likely to bind and are easier to control.*
  - Use the power tool, accessories and tool bits etc. in accordance with these instructions, taking into account the working conditions and the work to be performed.** *Use of the power tool for operations different from those intended could result in a hazardous situation.*
  - Keep handles and grasping surfaces dry, clean and free from oil and grease.** *Slippery handles and grasping surfaces do not allow for safe handling and control of the tool in unexpected situations.*
5. **Service**
- Have your power tool serviced by a qualified repair person using only identical replacement parts.** *This will ensure that the safety of the power tool is maintained.*
- Maintain labels and nameplates on the tool. These carry important safety information. If unreadable or missing, contact Harbor Freight Tools for a replacement.
6. **Safety instructions for routers**
- Hold the power tool by insulated gripping surfaces only, because the cutter may contact its own cord. Cutting a "live" wire may make exposed metal parts of the power tool "live" and could give the operator an electric shock.
  - Use clamps or another practical way to secure and support the workpiece to a stable platform. Holding the work by your hand or against the body leaves it unstable and may lead to loss of control.
  - Let bit cool before touching, changing or adjusting it. Bits heat up dramatically while in use, and can burn you.
7. **Battery tool use and care**
- Prevent unintentional starting.** *Ensure the switch is in the off-position before connecting to battery pack, picking up or carrying the power tool. Carrying the power tool with your finger on the switch or energizing power tool that have the switch on invites accidents.*
  - Disconnect the battery pack from the power tool before making any adjustments, changing accessories, or storing power tool.** *Such preventive safety measures reduce the risk of starting the power tool accidentally.*
  - Recharge only with the charger specified by the manufacturer.** *A charger that is suitable for one type of battery pack may create a risk of fire when used with another battery pack.*
  - Use power tools only with specifically designated battery packs.** *Use of any other battery packs may create a risk of injury and fire.*
  - When battery pack is not in use, keep it away from other metal objects, like paper clips, coins, keys, nails, screws or other small metal objects, that can make a connection from one terminal to another.** *Shorting the battery terminals together may cause burns or a fire.*
  - Under abusive conditions, liquid may be ejected from the battery; avoid contact.** *If contact accidentally occurs, flush with water. If liquid contacts eyes, additionally seek medical help. Liquid ejected from the battery may cause irritation or burns.*
  - Do not use a battery pack or power tool that is damaged or modified.** *Damaged or modified batteries may exhibit unpredictable behavior resulting in fire, explosion or risk of injury.*

- h. **Do not expose a battery pack or power tool to fire or excessive temperature.**  
*Exposure to fire or temperature above 265°F may cause explosion.*
- i. **Follow all charging instructions and do not charge the battery pack or power tool outside of the temperature range specified in the instructions.** *Charging improperly or at temperatures outside of the specified range may damage the battery and increase the risk of fire.*
- j. **Have servicing performed by a qualified repair person using only identical replacement parts.** *This will ensure that the safety of the product is maintained.*
- k. **Do not modify or attempt to repair the power tool or the battery pack except as indicated in the instructions for use and care.**



The battery Charger gets hot during use. The Charger's heat can build up to unsafe levels and create a fire hazard if it does not receive adequate ventilation, due to an electrical fault, or if it is used in a hot environment. Do not place the Charger on a flammable surface. Do not obstruct any vents on the Charger.

**Especially avoid placing the Charger on carpets and rugs; they are not only flammable, but they also obstruct vents under the Charger.** Place the Charger on a stable, solid, nonflammable surface (such as a stable metal workbench or concrete floor) at least 1 foot away from all flammable objects, such as drapes or walls. Keep a fire extinguisher and a smoke detector in the area. Frequently monitor the Charger and Battery Pack while charging.

#### 8. Lithium Battery Safety Warnings



**LITHIUM BATTERIES STORE A LARGE AMOUNT OF ENERGY AND WILL VENT FIRE OR EXPLODE IF MISTREATED:**

- a. **Keep Battery Pack dry.**

#### b. **DO NOT DO ANY OF THE FOLLOWING TO THE BATTERY PACK:**

- **Open,**
- **Drop,**
- **Short-circuit,**
- **Puncture,**
- **Incinerate, or**
- **Expose to temperatures greater than 265°F.**

- c. Charge Battery Pack only according to its Charger's instructions.
- d. Inspect Battery Pack before every use; do not use or charge if damaged.

#### 9. Vibration Safety

This tool vibrates during use. Repeated or long-term exposure to vibration may cause temporary or permanent physical injury, particularly to the hands, arms and shoulders. To reduce the risk of vibration-related injury:

- a. Anyone using vibrating tools regularly or for an extended period should first be examined by a doctor and then have regular medical check-ups to ensure medical problems are not being caused or worsened from use. Pregnant women or people who have impaired blood circulation to the hand, past hand injuries, nervous system disorders, diabetes, or Raynaud's Disease should not use this tool. If you feel any symptoms related to vibration (such as tingling, numbness, and white or blue fingers), seek medical advice as soon as possible.
- b. Do not smoke during use. Nicotine reduces the blood supply to the hands and fingers, increasing the risk of vibration-related injury.
- c. Wear suitable gloves to reduce the vibration effects on the user.
- d. Use tools with the lowest vibration when there is a choice.
- e. Include vibration-free periods each day of work.
- f. Grip tool as lightly as possible (while still keeping safe control of it). Let the tool do the work.
- g. To reduce vibration, maintain the tool as explained in this manual. If any abnormal vibration occurs, stop use immediately.

# Grounding

## ⚠️ WARNING



**TO PREVENT ELECTRIC SHOCK AND DEATH FROM INCORRECT GROUNDING:**  
 Check with a qualified electrician if you are in doubt as to whether the outlet is properly grounded. Do not modify the power cord plug provided with the tool charger. Never remove the grounding prong from the plug. Do not use the tool charger if the power cord or plug is damaged. If damaged, have it repaired by a service facility before use. If the plug will not fit the outlet, have a proper outlet installed by a qualified electrician.

## Extension Cords

**Note:** Extension cords must not be used with this item's Charger.

## Symbology

	Double Insulated
<b>V</b>	Volts
~	Alternating Current
<b>A</b>	Amperes
n <sub>0</sub> xxxx/min.	No Load Revolutions per Minute (RPM)
	WARNING marking concerning Risk of Eye Injury. Wear ANSI-approved safety goggles with side shields.

	Read the manual before set-up and/or use.
	WARNING marking concerning Risk of Fire. Do not cover Charger ventilation ducts. Keep flammable objects away. Charge on fireproof surface only.
	WARNING marking concerning Risk of Electric Shock. Properly connect Charger's power cord to appropriate outlet.
	WARNING marking concerning Risk of Explosion. Do not puncture, short, or open battery packs and do not charge damaged battery packs.

## Specifications

Collet Size	1/4"
Charger Type	Bauer 20V 3.0A Charger (57006)
Battery Type	Bauer 20V 3.0Ah Li-Ion Battery (64816)
No Load Speed	n <sub>0</sub> : 10,000 - 30,000/min
Max. Accessory Diameter	1-3/8"

## Setup - Before Use:



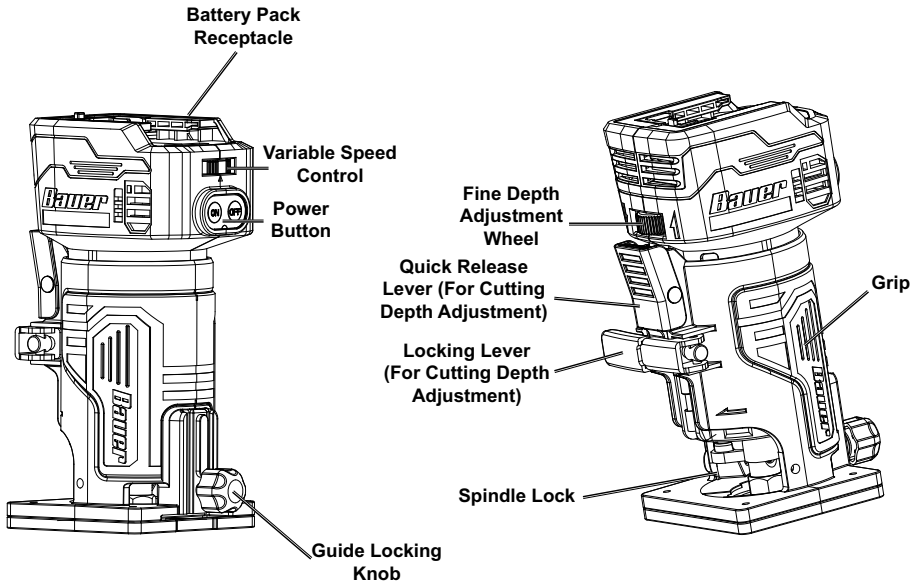
Read the **ENTIRE IMPORTANT SAFETY INFORMATION** section at the beginning of this manual including all text under subheadings therein before set up or use of this product.

**Note:** For additional information regarding the parts listed in the following pages, refer to *Parts List and Diagram* on page 14.

## Charging

Charge battery before using this tool.  
Follow instructions included with battery charger (sold separately).

## Functions



## Operating Instructions



Read the **ENTIRE IMPORTANT SAFETY INFORMATION** section at the beginning of this manual including all text under subheadings therein before set up or use of this product.

## Tool Set Up

### Installing Router Bit

**Note:** This tool includes a 1/4" collet. Use only bits that have a 1/4" shank.

1. Use only bits that are marked as suitable for the type of material being cut.
2. Use only bits that are marked with a speed equal or higher than the speed marked on the tool.
3. Make sure battery is removed from router before installing a router bit.
4. Open the Locking Lever. Push and hold the Quick Release Lever. Hold the Router Housing carefully, slowly move the Router upwards to expose Collet Nut. See Figure A.
5. Press and hold the Spindle Lock to prevent the Spindle from rotating.
6. Loosen the Collet Nut counterclockwise with the wrench (included), but do not remove.
7. Insert the shank end of the new bit (sold separately) into the opening in the Collet Nut. Pull out bit slightly so that there is 1/16" gap at bottom of bit.
8. While holding the Spindle Lock, tighten the Collet Nut. Make sure Collet Nut is secure before using the Router.

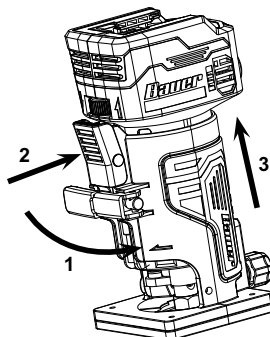


Figure A: Router Bit installation

### Adjusting Cutting Depth

**WARNING! TO PREVENT SERIOUS INJURY:** Remove battery before making any adjustments.

1. Open the Locking Lever. Push and hold the Quick Release Lever. Hold the Router Housing carefully, slowly move the Router upwards or downwards to desired position.
2. Release Quick Release Lever when Router is in desired position.
3. Further adjustments to Router Position can be made by moving the Fine Depth Adjustment Wheel left or right. Router Bit should just barely touch the surface of the workpiece.
4. When Router is in desired position, close the Locking Lever.
5. The depth scale on the Housing now shows the starting position. This starting position will vary depending on the bit used.
6. Add the desired depth of cut to the starting position. For example, if the starting position is 1/2" and the desired depth of cut is 1/4", the correct adjustment on the scale is 3/4".
7. Release the Locking Lever, and adjust the housing until the correct reading is shown on the depth scale; in this example 3/4". Tighten the Locking Lever.

## Installing Fence

1. Assemble the Fence using the locking screw and wing nut with its washer. See Figure B.

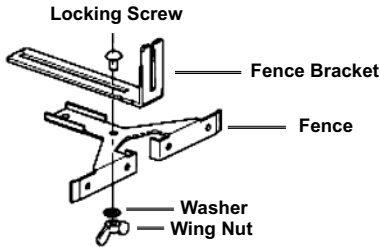


Figure B: Fence Assembly

2. Loosen the Guide Locking Knob. The short end of the Fence Bracket should slide underneath the Guide Locking Knob. Align the Fence to the mounting position of Base Plate and insert it to the desired working height. See Figure C.

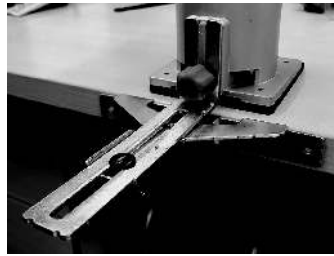


Figure C: Fence Installation with Fence Facing Inward and Down

3. Secure the Fence in position by tightening the Guide Locking Knob clockwise.
4. To adjust the Fence:
  - a. Loosen the Fence Wing Nut counterclockwise.
  - b. Slide the Fence to desired working position.
  - c. Retighten the Wing Nut to secure Fence.
5. When cutting, always ensure the Fence is flush with the side of the workpiece.

## Setting up a Temporary Guide

1. A temporary guide can be used to make a straight cut which does not parallel the edge of the workpiece.
2. Clamp a suitable straight board across the workpiece parallel to the desired location of the cut.
3. Install the Fence Assembly with the Fence facing outward and up. The Wing Nut should be installed in the hole furthest from the raised edge of the Fence. See Figure D.

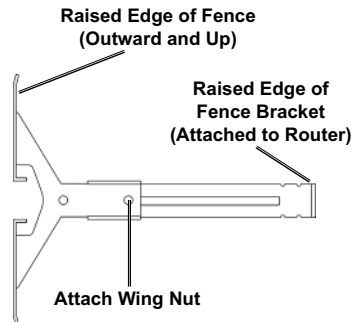


Figure D: Temporary Guide Installation

## Circle Cutting

1. Install the Fence as shown in Figure E.
2. Set the distance from the center hole in the Fence to the far edge of the router bit equal to the radius of the circle. Lock the Fence in place with the Guide Locking Knob and Wing Nut.
3. Align the center hole in the Fence with the center point of the circle.
4. Drive a nail through the center hole to secure the Fence in place.
5. Use the nail in the center to rotate the Router and make a circle cut.

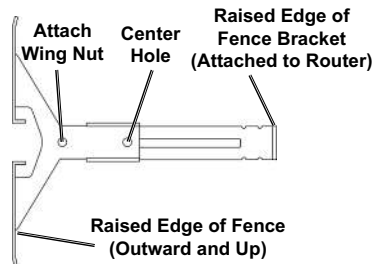


Figure E: Circle Cutting with Fence

## Installing Dust Cowl

1. The Dust Cowl has two raised cylinders on either side. The cylinders correspond to holes on the outer covering of the router.
2. Insert the Dust Cowl's raised cylinders into the holes on the outer covering.
3. Make sure Dust Cowl is secure before using the router.

## Installing Center Pin (Not Included)

1. Loosen the four screws (33) at the bottom of the Base Plate (31).
2. Place conical disk onto the center hole of the Base Plate. Insert the axis into the conical disk.
3. Using center pin, the Base Plate can be adjusted for chuck centering.
4. Tighten the four screws (33) at the bottom of the base plate.

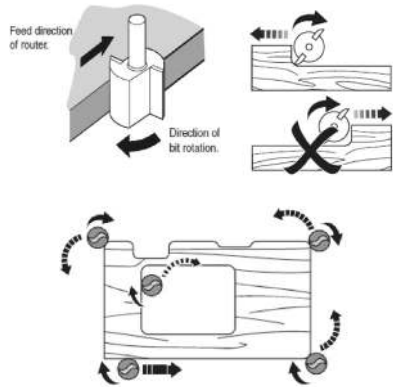
## Workpiece and Work Area Set Up

1. Designate a work area that is clean and well lit. The work area must not allow access by children or pets to prevent distraction and injury.
2. Secure loose workpieces using a vise or clamps (not included) to prevent movement while working.
3. There must not be objects, such as utility lines, nearby that will present a hazard while working.

**Warning:** Use clamps or another practical way to secure and support the workpiece to a stable platform. Holding the workpiece by your hand or against the body leaves it unstable and may lead to loss of control.

## General Instructions for Use

1. Hold the tool by gripping the textured surface opposite the Locking Lever. Use another hand on top of the battery pack to maintain control.
2. Adjust Router Speed to suit workpiece and bit diameter. To adjust speed, rotate the Variable Speed Control. Speed ranges from 1 (slowest speed) to 6 (fastest speed).
3. Press and hold the "ON" Power Button for three seconds or until Router starts.
4. Wait until the router bit has reached its full speed before making contact with the workpiece.
5. Move the router with a slow, controlled motion. Pay attention to the direction of feed.
  - a. When using the Fence: Cut parallel to the edge of the workpiece with the Fence following the edge.
  - b. When using a Temporary Guide: Cut with the Fence following the edge of the temporary guide.
  - c. When making a Circle Cut: With the nail in place through the center hole of the Fence, plunge the router bit into the workpiece and rotate the Router in a circle around the nail.
6. Always route against the rotation direction of the router bit. Move the router counterclockwise when routing on workpiece edges, move the router clockwise when routing the inside of the workpiece. See Figure F.



**Figure F: Bit Rotation and Router Movement**

7. Bring the router to a stop at the end of the cut. Press the "OFF" Power Button. Wait until the router bit has come to a complete stop before removing the Router from the workpiece.
8. To prevent accidents, turn off the tool and remove its Battery Pack after use. Clean, then store the tool indoors out of children's reach.

## Maintenance and Servicing Instructions



Procedures not specifically explained in this manual must be performed only by a qualified technician.

### **⚠ WARNING**

#### **TO PREVENT SERIOUS INJURY FROM ACCIDENTAL OPERATION:**

Make sure that the Trigger is in the off-position and unplug the tool from its electrical outlet remove its Battery Pack before performing any procedure in this section.

#### **TO PREVENT SERIOUS INJURY FROM TOOL FAILURE:**

Do not use damaged equipment. If abnormal noise or vibration occurs, have the problem corrected before further use.

## Cleaning, Maintenance, and Lubrication

- BEFORE EACH USE**, inspect the general condition of the tool. Check for:
  - leaking, swollen, or cracked battery pack,
  - loose hardware,
  - misalignment or binding of moving parts,
  - damaged cord/electrical wiring,
  - cracked or broken parts, and
  - any other condition that may affect its safe operation.
- AFTER USE**, wipe external surfaces of the tool with clean cloth. Do not use water or chemical cleaners to clean tool.
- LI-ION BATTERY MUST BE RECYCLED OR DISPOSED OF PROPERLY.**  
Do not short, incinerate or open battery.
- Periodically, wear ANSI-approved safety goggles and NIOSH-approved breathing protection and blow dust out of the motor vents using dry compressed air.
- Periodically wipe Collet and router bits with a light oil to prevent rust.
- Disconnect battery pack and store battery pack, charger, and tool in dry, indoor area out of reach of children and away from metal objects (i.e., paperclips, coins) to prevent shorting.


# Troubleshooting

SAFETY

SETUP

OPERATION

MAINTENANCE

Problem	Possible Causes	Likely Solutions
Tool will not start.	<ol style="list-style-type: none"> <li>1. Tool's thermal reset breaker tripped (if equipped).</li> <li>2. Battery Pack not properly connected.</li> <li>3. Battery Pack not properly charged.</li> <li>4. Battery Pack burnt-out.</li> <li>5. Internal damage or wear. (Power Button, for example.)</li> </ol>	<ol style="list-style-type: none"> <li>1. Turn off tool and allow to cool. Press reset button on tool.</li> <li>2. Remove Battery Pack, make sure there are no obstructions, reinsert the Battery Pack according to its shape (it should only fit one way), and press firmly until the Battery Pack locks in place.</li> <li>3. Make sure Charger is connected and operating properly. Give enough time for Battery Pack to recharge properly.</li> <li>4. Dispose of old Battery Pack properly or recycle. Replace Battery Pack.</li> <li>5. Have technician service tool.</li> </ol>
Tool operates slowly.	<ol style="list-style-type: none"> <li>1. Forcing tool to work too fast.</li> <li>2. Battery Pack wearing out.</li> </ol>	<ol style="list-style-type: none"> <li>1. Allow tool to work at its own rate.</li> <li>2. Dispose of old Battery Pack properly or recycle. Replace Battery Pack.</li> </ol>
Performance decreases over time.	Router bit dull or damaged.	Keep Router bits in optimal condition. Replace as needed.
Excessive noise or rattling.	Internal damage or wear. (bearings, for example.)	Have technician service tool.
Overheating.	<ol style="list-style-type: none"> <li>1. Forcing tool to work too fast.</li> <li>2. Router bit dull or damaged.</li> <li>3. Blocked motor housing vents.</li> </ol>	<ol style="list-style-type: none"> <li>1. Allow tool to work at its own rate.</li> <li>2. Keep Router bits in optimal condition. Replace as needed.</li> <li>3. Wear ANSI-approved safety goggles and NIOSH-approved dust mask/respirator while blowing dust out of motor using compressed air.</li> </ol>
 <p><b>Follow all safety precautions whenever diagnosing or servicing the tool. Disconnect Battery Pack and Charger power supply before service.</b></p>		

## PLEASE READ THE FOLLOWING CAREFULLY

---

THE MANUFACTURER AND/OR DISTRIBUTOR HAS PROVIDED THE PARTS LIST AND ASSEMBLY DIAGRAM IN THIS MANUAL AS A REFERENCE TOOL ONLY. NEITHER THE MANUFACTURER OR DISTRIBUTOR MAKES ANY REPRESENTATION OR WARRANTY OF ANY KIND TO THE BUYER THAT HE OR SHE IS QUALIFIED TO MAKE ANY REPAIRS TO THE PRODUCT, OR THAT HE OR SHE IS QUALIFIED TO REPLACE ANY PARTS OF THE PRODUCT. IN FACT, THE MANUFACTURER AND/OR DISTRIBUTOR EXPRESSLY STATES THAT ALL REPAIRS AND PARTS REPLACEMENTS SHOULD BE UNDERTAKEN BY CERTIFIED AND LICENSED TECHNICIANS, AND NOT BY THE BUYER. THE BUYER ASSUMES ALL RISK AND LIABILITY ARISING OUT OF HIS OR HER REPAIRS TO THE ORIGINAL PRODUCT OR REPLACEMENT PARTS THERETO, OR ARISING OUT OF HIS OR HER INSTALLATION OF REPLACEMENT PARTS THERETO.

SAFETY

SETUP

OPERATION

MAINTENANCE

Record Product's Serial Number Here: \_\_\_\_\_

**Note:** If product has no serial number, record month and year of purchase instead.

**Note:** Some parts are listed and shown for illustration purposes only, and are not available individually as replacement parts. Specify UPC 193175446831 when ordering parts.

## Parts List and Diagram

SAFETY

SETUP

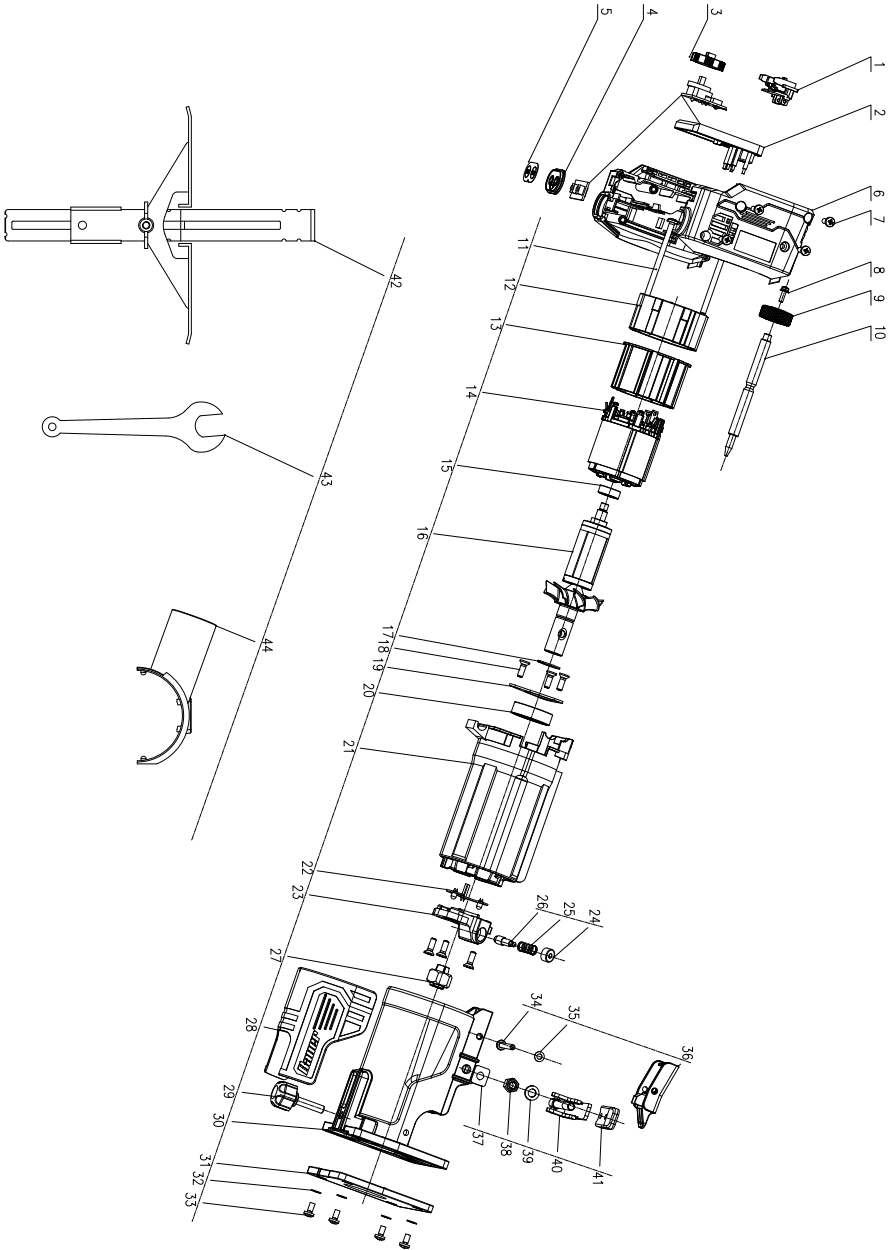
OPERATION

MAINTENANCE

Part	Description	Qty
1	Electrode Holder	1
2	Router PCB	1
3	Variable Speed Control Wheel	1
4	Switch PCB	1
5	Power Switch Label	1
6	Housing	1
7	Screw, 3.9x16	4
8	Screw, M3x10	1
9	Fine Depth Adjustment Knob	1
10	Screw	1
11	Screw, ST2.9x20-F	2
12	Rotor Holder	1
13	Stator Sleeve	1
14	Stator, 48x35	1
15	Bearing	1
16	Rotor	1
17	Circlip	1
18	Screw, ST4.2x13	6
19	Bearing Pressure Plate	1
20	Bearing	1
21	Motor Barrel	1
22	LED	1

Part	Description	Qty
23	Locking Lever	1
24	Self Locking Cap	1
25	Compression Spring	1
26	Self Locking Rod	1
27	Elastic Chuck	1
28	Rubber Coating	1
29	Guide Locking Knob	1
30	Depth Adjustment Sleeve	1
31	Base Plate	1
32	Washer	4
33	Screw, M4x8	4
34	Rivet	1
35	Washer	1
36	Quick Release Lever	1
37	Pressure Plate	1
38	Nut	1
39	Washer	1
40	Locking Assembly	1
41	Locking Assembly Sheath	1
42	Fence Assembly	1
43	Locking Wrench	1
44	Dust Cowl	1

# Assembly Diagram



SAFETY

SETUP

OPERATION

MAINTENANCE

## Limited 90 Day Warranty

Harbor Freight Tools Co. makes every effort to assure that its products meet high quality and durability standards, and warrants to the original purchaser that this product is free from defects in materials and workmanship for the period of 90 days from the date of purchase. This warranty does not apply to damage due directly or indirectly, to misuse, abuse, negligence or accidents, repairs or alterations outside our facilities, criminal activity, improper installation, normal wear and tear, or to lack of maintenance. We shall in no event be liable for death, injuries to persons or property, or for incidental, contingent, special or consequential damages arising from the use of our product. Some states do not allow the exclusion or limitation of incidental or consequential damages, so the above limitation of exclusion may not apply to you. THIS WARRANTY IS EXPRESSLY IN LIEU OF ALL OTHER WARRANTIES, EXPRESS OR IMPLIED, INCLUDING THE WARRANTIES OF MERCHANTABILITY AND FITNESS.

To take advantage of this warranty, the product or part must be returned to us with transportation charges prepaid. Proof of purchase date and an explanation of the complaint must accompany the merchandise. If our inspection verifies the defect, we will either repair or replace the product at our election or we may elect to refund the purchase price if we cannot readily and quickly provide you with a replacement. We will return repaired products at our expense, but if we determine there is no defect, or that the defect resulted from causes not within the scope of our warranty, then you must bear the cost of returning the product.

This warranty gives you specific legal rights and you may also have other rights which vary from state to state.

# ***Bauer***<sup>™</sup>

26541 Agoura Road • Calabasas, CA 91302 • 1-888-866-5797