

Hydrogenic™ 0.5g/h Saltwater Chlorinator Manual

OWNER'S MANUAL

60340 Chlorinator

 Visit the Bestway YouTube channel



Visit www.bestwaycorp.com/support for help
WE SUGGEST NOT TO RETURN THE PRODUCT TO THE STORE
QUESTIONS? PROBLEMS? MISSING PARTS?
For FAQ, Manuals, Videos Or Spare Parts, Please Visit bestwaycorp.com/support

IMPORTANT SAFETY INSTRUCTIONS

READ AND FOLLOW ALL INSTRUCTIONS.

Carefully read, understand, and follow all information in this user manual before installing and using the Chlorinator. These warnings, instructions, and safety guidelines address some common risks, but they cannot cover all risks and dangers in all cases. Always use caution, common sense and good judgment when using the Chlorinator. Retain this information for future use. In addition, the following information can vary depending on the Chlorinator type. Keep the instruction manual in a safe place.

WARNING

- This appliance can be used by children aged from 8 years and above and persons with reduced physical, sensory or mental capabilities or lack of experience and knowledge if they have been given supervision or instruction concerning use of the appliance in a safe way and understand the hazards involved. Children shall not play with the appliance. Cleaning and user maintenance shall not be made by children without supervision.
- If instructions are missing, please contact the manufacturer or search it on the website www.bestwaycorp.com.
- The appliance is only for household use, not for commercial use.
- Caution: Read the instruction before using the appliance and installation/reassemble each time.
- When the appliance will be not used for long time, such as in the winter, the pool set should be disassembled and stored indoor.
- This appliance contains batteries that are non-replaceable.
- Max. Charging voltage & current: 5Vd.c. 2A.



DISPOSAL

Electrical products should not be disposed of with household waste. Please recycle where facilities exist. Check with your local authority or retailer for recycling advice.

SETUP

CHECK LIST

To check the parts list inside the manual. Verify that the equipment components represent the model that you had intended to purchase. In case of any damaged or missing parts at the time of purchase, visit our website bestwaycorp.com/support. Drawings are for illustration purposes only. May not reflect actual product. Not to scale.

PRODUCT SPECIFICATIONS

Maximum chlorine production per hour:	0.5 g/h
Maximum charging current:	DC 5V/2A
Maximum recharging time:	6 Hours
Maximum working time:	8 Hours
Salt concentration:	3000 ppm (3 g/L)
Water temperature:	10°C (50°F) - 40°C (104°F)
Ambient temperature:	5°C (41°F) - 40°C (104°F)
Compatible with max water capacity:	370 gal (1400 L)

RECOMMENDATIONS BEFORE INSTALLATION

- Only use sodium chloride (NaCl) salt with a purity of at least 99.8% to fully dissolve it.
- Too low salt purity will reduce the efficiency of the chlorinator and result in low chlorine production. High salt purity may produce a salty taste to the pool water and it may cause corrosion to metal fixtures and fittings in the pool.
- The "Pool Salt Table" shows the correct amount of salt required. Refer to the different quantity of water. The salt in the pool will not automatically decrease. Only when the pool water is lost will the salt in the water decrease, and the evaporation of water will not cause the salt to decrease.







Pool Salt Table					
Pool capacity		The amount of salt added for the first time 3.0 g/L (3000 ppm)		Display code "F1" the amount of salt that needs to be added	
(gal)	(l)	(lb)	(kg)	(lb)	(kg)
150	568	3.8	1.7	1.2	0.6
200	757	5.0	2.3	1.7	0.8
250	946	6.3	2.8	2.1	0.9
300	1136	7.5	3.4	2.5	1.1
350	1325	8.8	4.0	2.9	1.3
370	1400	9.3	4.2	3.1	1.4

If the device shows error F2, it is necessary to reduce the salt concentration: Drain about 20% of the pool water, and then refill with clean water. Wait 1 hour, and if the error still remains, repeat the operation until the F2 error disappears.

In case the quantity of water of your pool is not listed in the "pool salt table", follow the below formula to calculate the correct quantity of salt to add to the pool to reach the 3000 ppm of salt concentration, or in case the F1 error appears on the display.

The amount of salt added for the first time:		The amount of salt that needs to be added if the "F1" error code displays:	
(lb)	(kg)	(lb)	(kg)
Water capacity(gal) *0.025	Water capacity(l) *0.003	Water capacity(gal) *0.0084	Water capacity(l) *0.001

USING THE CHLORINATOR

	Code number	Icon	Name	Illustrate
	1		Power Button	<p>ON/OFF: Press and hold for 3s to turn on/off the chlorinator.</p> <p>Timer: Press once to wake up, and press quickly to adjust working time.</p> <p>Power Indicator: Green means sufficient power, red means insufficient power.</p>
	2		Digital Display	Displays running time/remaining time/fault code Power-on state/standby mode.
	3		Low Salt Indicator	The salt concentration is too low and salt needs to be added to the pool water. Display shows: F1.
	4		Good Salt Indicator	The salt concentration is at the optimal level.
	5		High Salt Indicator	The salt concentration is too high, part of the salt should be removed from the pool water. Display shows: F2.

Standby mode: At the end of the cycle, the display shows "00". At this time, the chlorinator will automatically enter the standby mode. The day after, approximately at the same time, it will automatically run again. If you switch off the Chlorinator or the battery runs out of power, when it is switched on again or you use it after the charge is complete, the chlorinator will return to the previously set working hours.

Operation Procedures

1. Charge the chlorinator before using it. The product includes a charging cable. Please use the charger with a USB interface to charge the chlorinator.
Note: The Power Button will flash red while the device is charging; it turns green when the chlorinator is fully charged.
2. Press and hold the Power Button for 3 seconds to activate the chlorinator, and the Digital Display will show the working time.
3. Press and hold the Power Button to set the desired working time (1-8 hours). Please refer to the Recommended Working Time Set Table for different sizes of pools.
4. Put the chlorinator into the water.

Recommended Pool Working Time Set Table

1. This table shows the recommended working hours for the normal maintenance of the chlorinator connected to the pool.
2. For cleaning the pool, please run it at 1.5-2 times the time shown in the table for the first use, and run it according to the normal working hours once the chlorine level is reached.


3. On the first use or if the water in the pool is dirty, run the chlorinator until the level of chlorine is correct or the water is clean. Refer to the working time shown in the table below.

Pool size		Recommended Working time (hours)	
Gallon	Liter	First Working Hour	The Second Day Working Hour
150	568	2	2
200	757	3	2
250	946	4	3
300	1136	5	3
350	1325	6	4
370	1400	7	4

It is recommended to cover the surface of the pool during the operation of the product to help increase the level of chlorine in the pool.

MAINTENANCE

ELECTROLYTIC CELL

- To clean the electrolytic cell, follow the instruction in the section . Drawings are for illustration purposes only. May not reflect actual product. Not to scale.
- In order to maintain the best results, we recommend opening and checking the electrodes every month. However, if the water quality of the swimming pool is hard water (high content of calcium and magnesium ions), the electrodes may need to be cleaned manually on a regular basis.
- To clean the electrolytic cell, it is suggested to use a solution of 50% water/50% vinegar, or check with your pool dealer the suitable chemical product. Be sure to avoid chemical product that can damage the Titanium plate.

WATER CHEMICAL BALANCE

	Minimum	Best Value	Maximum
Available chlorine	0	0.5 - 3.0 ppm	3.0 ppm
Combined chlorine	0	0	0.2 ppm
pH value	7.2	7.4 - 7.6	7.8
Total alkalinity	40 ppm	80 - 100 ppm	120 ppm
The hardness of calcium	50 ppm	100 - 250 ppm	350 ppm
Stabilizer (cyanuric acid)	10 ppm	20 - 40 ppm	50 ppm

- If the concentration of chlorine exceed the recommended level, it can be dangerous to use the pool. Test the chemical balance before using the pool. If using the test strip, check the expiration date, as the test result may be inaccurate if passed the expiration date.
- It is recommended to check the level of the chemical in the water every day and before use.
- Product damage resulting from chemical misuse and overall mismanagement is not covered by the warranty.

STORAGE

- Be sure to clean and dry all before the storage. If all the parts are not completely dry, mold may result.
- We strongly recommend disassembling the product during the off-season (winter months) and storing it in a dry place with a moderate temperature between 10 °C/50 °F and 38 °C/100 °F.
- Store and switch off the chlorinator in a clean, dry place when not in use. Do not leave it in the sun as this will shorten the lifespan of the batteries. The chlorinator must be put into the pool for use.

WARRANTY TERMS

For information concerning warranty terms, visit our website at: www.bestwaycorp.com.

TROUBLESHOOTING

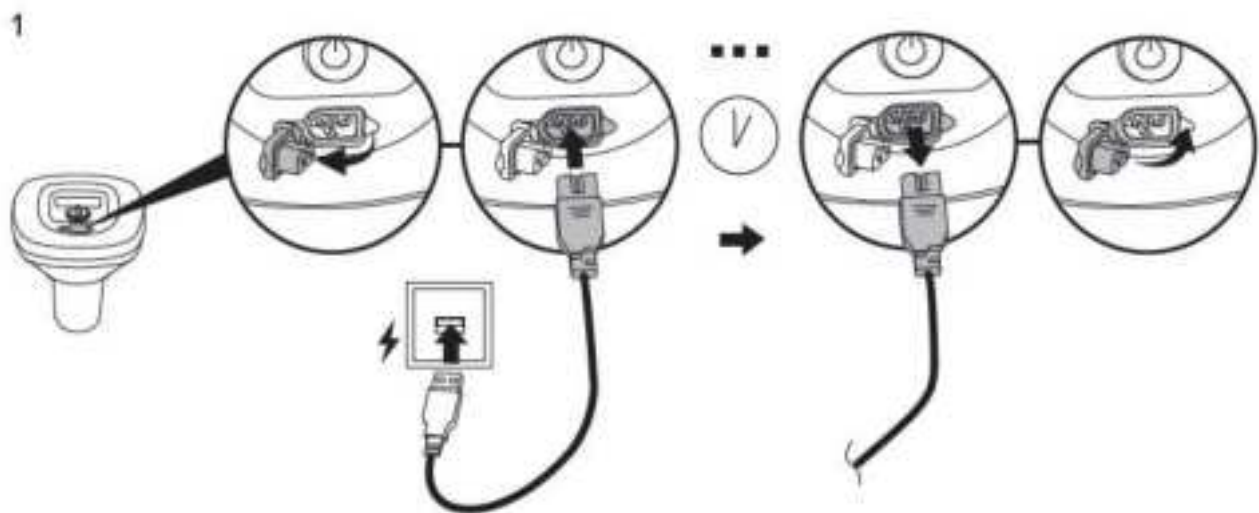
Problems	Probable Causes	Solutions
Insufficient chlorine concentration	<ul style="list-style-type: none"> The running time of the product is not long enough. The salt concentration is not enough (less than 2000 ppm). The electrolytic cell is blocked or left with dirt. Increase in swimmers. Strong exposure to the sun leads to the emission of chlorine. 	<ul style="list-style-type: none"> Please increase the running time of the product every day. For details, please refer to "Operation Instructions". Adjust the salt concentration by referring to the "Pool Salt Table". If necessary, please disassemble the electrolytic cell for inspection and cleaning. Please refer to "Maintenance". Please increase the running time of the product every day. When the pool is not in use or the product is running, please cover the pool cover. Please increase the running time of the product every day. During the running of the product, you can cover the surface of the pool and wait 2 days before using the test paper to test.
Flocculent precipitation in water	<ul style="list-style-type: none"> There is too much calcium in the pool water. 	<ul style="list-style-type: none"> Empty about 20%-25% of the pool water volume, then add clean water to reduce the hardness. If necessary, please disassemble the electrolytic cell for inspection and cleaning.
LED indicator has no display code	<ul style="list-style-type: none"> Run out of power. The LED indicator fails. 	<ul style="list-style-type: none"> Charge the product. Please contact Bestway Customer Service Center for replacement.

ERROR CODES

Problems	Probable Causes	Solutions
Display code "F1"	The chlorinator is not in the water.	Make sure the chlorinator is in the pool.
	Low salt concentration or no salt.	Add salt. Please refer to "Pool Salt Table".
	Dirt remains in the electrolytic cell.	If necessary, remove the electrode to check and clean it. Please refer to

		"Maintenance".
	The electrolytic cell may fail.	Please contact Bestway Customer Service Center for replacement.
Display code "F2"	Salt concentration is too high.	Drain part of the pool water and add some clean water. Refer to "Salt and Pool Water Consumption"
Display code "F6"	The electrolytic cell has reached the end of its lifespan.	For assistance, please visit the support section on our website, www.bestwaycorp.com .







1



2



3



1



2



3



4

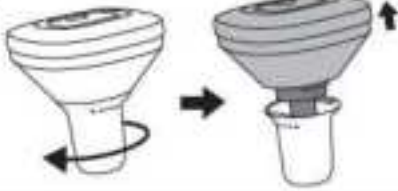


5





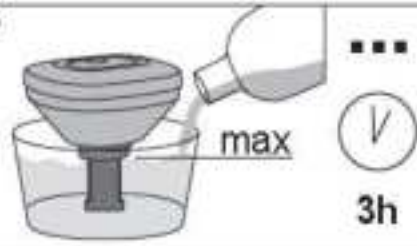
1 



2



3



4 

