

Bissell®

**CLEANVIEW®
USER GUIDE**



REMANUFACTURED 1332R

*Product images may vary

IMPORTANT SAFETY INSTRUCTIONS

READ ALL INSTRUCTIONS BEFORE USING YOUR UPRIGHT VACUUM.

Always connect to a polarized outlet (one slot is wider than the other). Unplug from outlet when not in use and before conducting maintenance. When using an electrical appliance, basic precautions should be observed, including the following:

WARNING

TO REDUCE THE RISK OF FIRE, ELECTRIC SHOCK, OR INJURY:

- » Always connect to a polarized outlet (one slot is wider than the other). Do not modify the polarized plug to fit a non-polarized outlet or extension cord.
- » Do not leave vacuum cleaner when it is plugged in. Unplug from outlet when not in use and before servicing.
- » Do not use outdoors or on wet surfaces.
- » Do not allow to be used as a toy. Close attention is necessary when used by or near children.
- » Do not use for any purpose other than described in this User's Guide. Use only manufacturer's recommended attachments.
- » Do not use with damaged cord or plug. If appliance is not working as it should, has been dropped, damaged, left outdoors, or dropped into water, have it repaired at an authorized service center.
- » Do not pull or carry by cord, use cord as a handle, close a door on cord, or pull cord around sharp edges or corners. Do not run appliance over cord. Keep cord away from heated surfaces.
- » Do not unplug by pulling on cord. To unplug, grasp the plug, not the cord.
- » Do not handle plug or vacuum cleaner with wet hands.
- » Hold plug when rewinding onto cord reel. Do not allow plug to whip when rewinding.
- » Do not put any object into openings. Do not use with any opening blocked; keep openings free of dust, lint, hair, and anything that may reduce air flow.
- » Keep hair, loose clothing, fingers, and all parts of body away from openings and moving parts.
- » Turn off all controls before plugging or unplugging vacuum cleaner.
- » Use extra care when cleaning on stairs.
- » Do not use to pick up flammable or combustible materials (lighter fluid, gasoline, kerosene, etc.) or use in areas where they may be present.
- » Do not use vacuum cleaner in an enclosed space filled with vapors given off by oil base paint, paint thinner, some moth proofing substances, flammable dust, or other explosive or toxic vapors.
- » Do not use to pick up toxic material (chlorine bleach, ammonia, drain cleaner, etc.).
- » Do not pick up anything that is burning or smoking, such as cigarettes, matches, or hot ashes.
- » Do not use without filters in place.
- » Do not pick up hard or sharp objects such as glass, nails, screws, coins, etc.
- » Use only on dry, indoor surfaces.

- » Keep appliance on a level surface.
- » Do not carry the vacuum cleaner while it is running.
- » Unplug before connecting or disconnecting the TurboBrush® Tool.

WARNING

The rotating floor brush continues to rotate while tools are in use. To reduce the risk of injury from moving parts, always move the cleaner with the carrying handle at the back of the cleaner. Always place vacuum cleaner on floor with handle in upright position when using tools. Never place your fingers under the cleaner when it is running. Never place powerfoot on furniture or uneven surfaces. Do not place vacuum cleaner close enough to objects to pull them into rotating brush.

WARNING

Plastic film can be dangerous. To avoid danger of suffocation, keep away from babies and children.

WARNING

Do not plug in your vacuum cleaner until you are familiar with all instructions and operating procedures.

WARNING

To reduce the risk of electric shock, turn power switch off and disconnect polarized plug from electrical outlet before performing maintenance or troubleshooting checks.

SAVE THESE INSTRUCTIONS

This model is for household use only.

THIS APPLIANCE HAS A POLARIZED PLUG

To reduce the risk of electric shock, this appliance has a polarized plug (one blade is wider than the other). This plug will fit in a polarized outlet only one way. If the plug does not fit fully in the outlet, reverse the plug. If it still does not fit, contact a qualified electrician to install a proper outlet. Do not change the plug in any way.

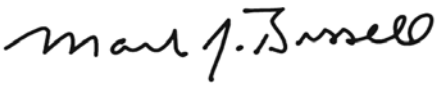
Thanks for buying a BISSELL vacuum

We're glad you purchased a BISSELL vacuum. Everything we know about floor care went into the design and construction of this complete, high-tech home cleaning system.

Your BISSELL vacuum is well made, and we back it with a limited 90-day warranty. We also stand behind it with a knowledgeable, dedicated Consumer Care department, so, should you ever have a problem, you'll receive fast, considerate assistance.

My great-grandfather invented the floor sweeper in 1876. Today, BISSELL is a global leader in the design, manufacture, and service of high quality homecare products like your BISSELL vacuum.

Thanks again, from all of us
at BISSELL.



Mark J. Bissell
Chairman & CEO

Safety Instructions.....	2
Product View.....	4
Assembly	5
Operations	5-6
Maintenance & Care	7-9
Troubleshooting	10
Warranty.....	11
Service.....	11
Product Registration.....	12
Consumer Care.....	12



Product View



- | | | | |
|--|-----------------------------------|---|-------------------------|
| 1 Handle | 8 Bottom Easy Empty™
Dirt Tank | 15 Cord Clip | 22 Extension Wand Clip |
| 2 Power switch** | 9 Cord Rewind | 16 TurboBrush®/TurboEraser®
Pet Tool** | 23 Power Switch** |
| 3 Tank Release Button | 10 Post-Motor Filter | 17 Upper Hose Wrap | 24 Hose Wand |
| 4 Carry Handle | 11 Height Adjustment Knob | 18 Dusting Brush | 25 Hose Wand Base |
| 5 Suction Power Indicator** | 12 Brush Roll On/Off** | 19 Stretch Hose | 26 Handle Release Pedal |
| 6 Lid Release Button | 13 Furniture Protection Guard | 20 Crevice Tool (Grey) | 27 Foot Hose |
| 7 Pre-Motor Filter (located
inside Dirt Tank lid) | 14 Powerfoot | 21 Extension Wand | |

*Product images may vary

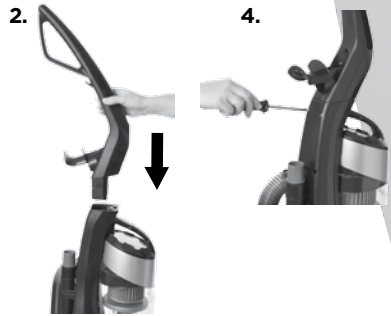
**On Select Models only

Assembly

The only tool you'll need to assemble your vacuum cleaner is a Phillips-head screwdriver.

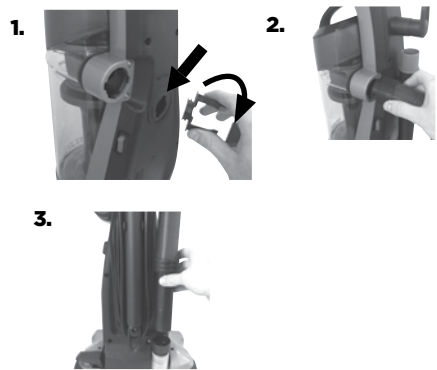
Attach handle to vacuum

1. Locate vacuum handle and remove screw packet taped to handle. Screw packet contains two screws of equal length.
2. Stand vacuum upright and slide base of handle firmly into opening at top of vacuum body.
3. Check to be sure handle is fitted to vacuum body. If there are any gaps between handle and vacuum base, continue to push handle firmly into base until handle is flush.
4. Insert two screws from screw packet into existing holes. Push each screw firmly into hole before beginning to secure the screw with a Phillips head screwdriver. If handle is aligned properly on vacuum base, you should be able to push screw almost entirely into hole until only the screw head is visible. Tighten screw with a Phillips head screwdriver by rotating screw clockwise.



Attach vacuum hose, clips & tools

1. Attach extension wand clip by inserting clip into the back of vacuum base and twisting clockwise. Mount extension wand (with crevice tool inside) on back of vacuum.
 2. Attach Twist 'n Snap™ hose by lining up tabs on cuff with corresponding notches on back of vacuum. Twist the Twist 'n Snap hose clockwise to lock hose into place.
 3. Slide end of hose wand into hose wand base, and fold hose over upper hose wrap.
- NOTE: Powerfoot will not suction properly unless hose wand is firmly attached.**
4. Slide dusting brush into opening below upper hose wrap.



Operations

Power switch

On some models, Power switch is on left of vacuum. Push rocker switch "ON" (I) to vacuum, and "OFF" (O) when finished. On other models, Power switch is on front of handle. Push button (I) once to vacuum and again when finished.

⚠ CAUTION

Before using your vacuum, make sure that the dirt tank is in the locked position and that both filters (pre-motor and post-motor) are in place. Do not operate your vacuum without these filters.

Operations

Handle position

Press handle release pedal with your foot to place your CleanView vacuum into one of three cleaning positions.

- 1. Upright** – For storage and above floor cleaning with tools.
- 2. Normal cleaning** – Press handle release pedal for household floor cleaning tasks.
- 3. Low cleaning** – With vacuum in normal cleaning position, press handle release pedal again, use for reaching under low furniture such as tables, chairs or beds.



Height adjustment

There are five height settings available for various floor surfaces. Turn dial on foot of cleaner to the desired setting.

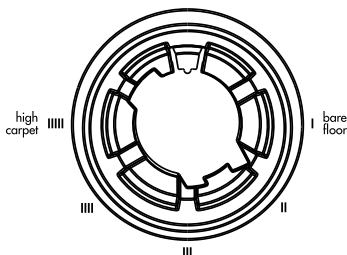
Lowest setting – For low pile carpet or bare floors. To pick up debris, it may be necessary to move up one setting.

Medium setting – For medium pile carpet.

Highest setting – For high pile and most shag carpet.

NOTE: For optimal carpet cleaning performance, adjust to lowest practical setting. If your cleaner is difficult to push, adjust to next higher setting.

If dial is difficult to turn, tilt cleaner back slightly to take weight off foot while turning.



Suction Power Indicator

(On select models)

The suction power indicator tells you when air flow in your vacuum is reduced due to dirty filters or a clog in hose. Suction power indicator will remain green until the airflow is reduced. At that time, it begins to change to red. When it is fully red, airflow is significantly reduced by a dirty filter or clog. Follow steps on page 9 for clearing a clog. Follow steps on pages 7 to clean your filters. All filters in vacuum should be cleaned or replaced when clean filter indicator turns red.

NOTE: When your vacuum is turned off, suction power indicator will go to green color setting. Suction power indicator only detects reductions in airflow when vacuum power is on.



Tip

» Hair, string and small objects can block the vacuum hose or tools. Check them occasionally for obstructions.

Automatic Cord Rewind

1. Gently pull out power cord and stop when yellow is visible. Do not pull power cord beyond the red line. Plug cord into electrical outlet.

2. To return cord, turn vacuum power switch off and remove plug from outlet. Hold plug and press automatic cord button to wind cord into reel. Do not allow plug to whip when rewinding.

Maintenance & Care

1. Empty dirt tank when dirt reaches “Full” line on side. (See page 8)
2. Check pre-motor filter at least once a month and clean or replace as needed. To access pre-motor filter, remove Easy Empty dirt tank from vacuum base and push lid release button located on carry handle. Remove foam filter from filter tray. On select models, a second small carbon filter is included here. Replace second small, black odor-absorbing carbon filter as needed.
3. Foam filter may be hand washed in warm water with a mild detergent, if desired. Rinse well, then air dry thoroughly before replacing filter. Make sure all components are completely dry before replacing.

NOTE: Black Carbon Filter is NOT washable.

4. Post-motor filter assists in filtration process to return clean air to room. Replace post-motor filter every three to six months. To access post-motor filter, remove filter tray located below Easy Empty dirt tank. When filter becomes dirty, push filter through the bottom of tray to clean or replace filter.

NOTE: Pleated post-motor filter may NOT be washed with water or detergent. If dust and/or debris accumulates on filter, gently tap filter on the side of a garbage container.

NOTE: More frequent filter cleaning or replacing may be necessary if you are vacuuming new carpet, fine dust, or have allergy concerns. Follow instructions on following pages to perform these simple maintenance steps.

To order replacement filters and parts, go to www.bissell.com

WARNING

To reduce the risk of electric shock, turn power switch off and disconnect polarized plug from electrical outlet before performing maintenance or troubleshooting checks.

2.



push for
filter



Lid Release
Button

4.



pull for
filter



Post-Motor
Filter Tray

WARNING

Do not operate vacuum with damp or wet filters or without all filters in place first.

Maintenance & Care

Empty Dirt Tank

Dirt tank needs to be emptied when dirt reaches the "Full" line on side of tank.

1. Unplug cleaner from electrical outlet.
2. Remove Easy Empty dirt tank from vacuum base by pushing tank release button.
3. Hold dirt tank over a garbage container. Press bottom lid release button on back of the dirt tank to empty dirt.
4. Mount Easy Empty dirt tank back on vacuum base.

NOTE: Dirt tank may be washed in warm water with a mild detergent. Make sure it is completely dry before replacing.

2.



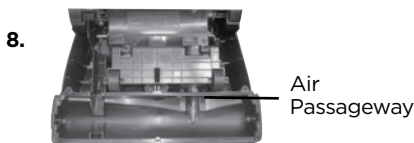
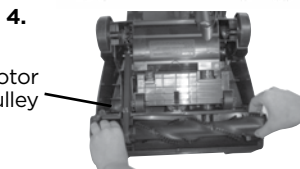
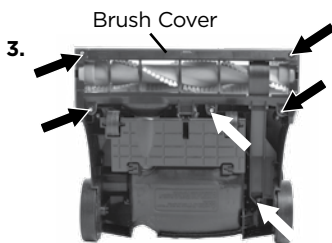
3.



Checking rotating floor brush and drive belt

You should check your vacuum cleaner's rotating floor brush and drive belt regularly for wear or damage. You should also clean the brush and brush ends of strings, hair and carpet fibers. These can wrap around the brush and hamper its ability to effectively clean your carpet. Also remove any debris that has accumulated under the brush cover.

1. Unplug cleaner from electrical outlet.
2. Place handle in low position and turn vacuum cleaner over so bottom side is up.
3. Remove six screws with a Phillips head screwdriver. Lift brush cover off.
4. Grasp rotating floor brush at both ends and lift straight out of the vacuum foot. Slip off belt.
5. Clean strings, hair and other debris from rotating floor brush, paying particular attention to brush ends.
6. Clean strings, hair and other debris from motor pulley and drive belt areas.
7. Check drive belt carefully for wear, cuts or stressed areas, and replace if necessary (see instructions on following page).
8. Check air passageway for obstructions. Remove debris from this area.



NOTICE

While vacuuming, certain carpets and low humidity conditions may generate small static discharges. The discharges are entirely harmless and are not associated in any way with the main power supply.

Maintenance & Care

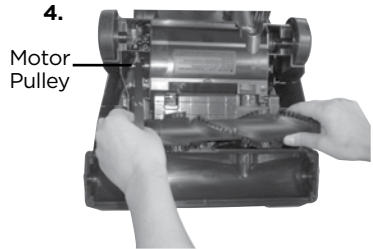
Replace drive belt

Use only a genuine BISSELL style 9 replacement belt (#203-1093) in your BISSELL CleanView vacuum.

1. Unplug cleaner from electrical outlet.
2. With rotating floor brush removed from vacuum cleaner (steps 1-4 of Check rotating floor brush and drive belt on page 8), grasp old drive belt and remove from motor pulley. Discard old drive belt.
3. Place new drive belt over motor pulley and stretch other end over rotating floor brush in the space between the bristles.
4. Place ends of rotating floor brush down into slots on sides as shown.
5. Turn rotating floor brush by hand several times in the direction of motor pulley. If properly installed, drive belt will center itself on rotating brush.
6. Reposition the brush cover and screw all six screws back into place.

WARNING

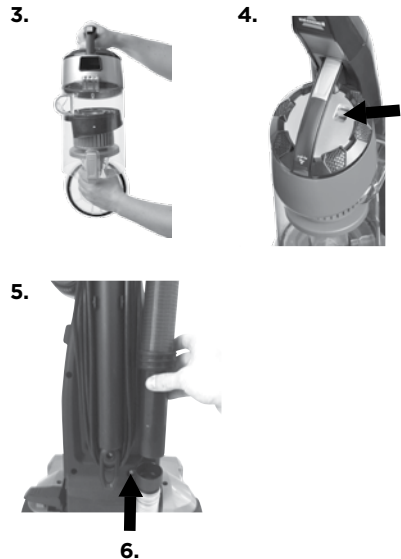
To reduce the risk of injury from moving parts, turn off vacuum cleaner and disconnect Polarized Plug from electrical outlet.



Clearing a clog

Low suction or poor pickup may be due to a clog in the vacuum cleaner. If you notice a change in sound of motor or a reduction in spinning action of dirt or brush roll, check for clogs.

1. Unplug cleaner from electrical outlet.
2. Remove Easy Empty dirt tank from vacuum base and empty dirt and debris.
3. Remove inner cyclone from Easy Empty dirt tank and check for debris build-up or clogs in the upper tank.
4. Check suction inlet for a clog.
5. Grasp hose wand to separate from hose wand base. Check for a clog in base, wand or within hose.
6. Remove screw attaching hose wand base to vacuum. Straighten hose wand base and check for clogs with a long, narrow object such as a broom stick. Do not use sharp objects like a clothes hanger, as these may puncture hose.
7. If clog persists, follow instructions for Checking rotating floor brush on page 8 and inspect air passageway for obstructions.



Troubleshooting

WARNING

To reduce the risk of electric shock, turn power switch off and disconnect polarized plug from electrical outlet before performing maintenance or troubleshooting checks.

Problem	Possible causes	Remedies
Vacuum cleaner won't turn on	Blown fuse/tripped breaker	Check/replace fuse or reset breaker
Vacuum cleaner won't pick up dirt	Incorrect height adjustment	Adjust powerfoot to correct height setting
	Hose not attached to suction opening	Grasp the hose wand and firmly push into the hose wand base
	Crack or hole in hose	Check hose and replace if needed
	Broken or worn drive belt	Replace drive belt, see page 8
	Rotating floor brush bristles worn	Replace brush
	Rotating floor brush jammed	Remove brush and clean debris from brush ends, see page 8
	Clog in vacuum	Follow instructions on page 9 for clearing clogs
	Dirt tank full	Empty dirt tank
	Dirt tank or upper tank not installed properly	Position correctly and lock in place
Filters are dirty	Check and clean or replace pre-motor and post-motor filters, see pages 7	
Vacuum cleaner difficult to push	Incorrect height adjustment	Adjust powerfoot to correct height setting
Visible dirt escaping from cleaner	Dirt tank full	Empty dirt tank
	Filters missing or installed incorrectly	Check pre-motor and post-motor filters for correct installation
Cord will not retract	Knotted or twisted	Follow instructions on page 6

Please do not return this product to the store.

Other maintenance or service not included in the manual should be performed by an authorized service representative.

Thank you for selecting a BISSELL product.

For any questions or concerns, BISSELL is happy to be of service. Contact us directly at 1-800-237-7691.

Warranty

This warranty gives you specific legal rights, and you may also have other rights which may vary from state to state. If you need additional instruction regarding this warranty or have questions regarding what it may cover, please contact BISSELL Consumer Care by E-mail, telephone, or regular mail as described below.

Limited 90-Day Warranty

Subject to the *EXCEPTIONS AND EXCLUSIONS identified below, upon receipt of the product BISSELL will repair or replace (with new or remanufactured components or products), at BISSELL's option, free of charge from the date of purchase by the original purchaser, for 90 days any defective or malfunctioning part.

See information on "If your BISSELL product should require service".

This warranty applies to product used for personal, and not commercial or rental service. This warranty does not apply to fans or routine maintenance components such as filters, belts, or brushes. Damage or malfunction caused by negligence, abuse, neglect, unauthorized repair, or any other use not in accordance with the User's Guide is not covered.

BISSELL IS NOT LIABLE FOR INCIDENTAL OR CONSEQUENTIAL DAMAGES OF ANY NATURE ASSOCIATED WITH THE USE OF THIS PRODUCT. BISSELL'S LIABILITY WILL NOT EXCEED THE PURCHASE PRICE OF THE PRODUCT.

Some states do not allow the exclusion or limitation of incidental or consequential damages, so the above limitation or exclusion may not apply to you.

*EXCEPTIONS AND EXCLUSIONS FROM THE TERMS OF THE LIMITED WARRANTY

THIS WARRANTY IS EXCLUSIVE AND IN LIEU OF ANY OTHER WARRANTIES EITHER ORAL OR WRITTEN. ANY IMPLIED WARRANTIES WHICH MAY ARISE BY OPERATION OF LAW, INCLUDING THE IMPLIED WARRANTIES OF MERCHANTABILITY AND FITNESS FOR A PARTICULAR PURPOSE, ARE LIMITED TO THE 90 DAY DURATION FROM THE DATE OF PURCHASE AS DESCRIBED ABOVE.

Some states do not allow limitations on how long an implied warranty last so the above limitation may not apply to you.

NOTE: Please keep your original sales receipt. It provides proof of date of purchase in the event of a warranty claim.

Service

If your BISSELL product should require service:

Visit BISSELL.com or contact BISSELL Consumer Care to locate a BISSELL Authorized Service Center in your area.

If you need information about repairs or replacement parts, or if you have questions about your warranty, contact BISSELL Consumer Care.

Website or E-mail:

www.BISSELL.com

Or Call:

BISSELL Consumer Care

1-800-237-7691

Monday - Friday 8am - 10pm ET

Saturday 9am - 8pm ET

Sunday 10am - 7pm ET



Register your product today!

Registering is quick, easy and offers you benefits over the lifetime of your product.

You'll receive:

BISSELL Rewards Points

Automatically earn points for discounts and free shipping on future purchases.

Faster Service

Supplying your information now saves you time should you need to contact us with questions regarding your product.

Product Support Reminders and Alerts

We'll contact you with any important product maintenance reminders and alerts.

Special Promotions

Optional: Register your email to receive notice of offers, contests, cleaning tips and more!

Visit www.BISSELL.com/registration now!

BISSELL Consumer Care

For information about repairs or replacement parts, or questions about your warranty:

Call:

BISSELL Consumer Care
1-800-237-7691

Monday - Friday	8 am - 10 pm ET
Saturday	9 am - 8 pm ET
Sunday	10am - 7pm ET

Visit the BISSELL website: www.BISSELL.com

When contacting BISSELL, have model number of cleaner available.

Please record your Model Number: _____

Please record your Purchase Date: _____

NOTE: Please keep your original sales receipt. It provides proof of purchase date in the event of a warranty claim. See Warranty on page 11 for details.



©2015 BISSELL Homecare, Inc
Grand Rapids, Michigan
All rights reserved. Printed in Mexico
Part Number 160-6634 Rev 03/15
Visit our website at: www.BISSELL.com