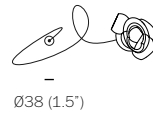


adjustable  
up to 3000  
(10')  
standard

adjustable  
up to  
24600  
(80')  
custom



150-191  
(5.5'-7.5')

- PENDANTS: one
- MOUNTING: mini outie canopy 38mm (1.5") in diameter x 16mm (0.6") deep
- LAMPING: 1.5w LED (2000K, 2500K, 3500K)
- CABLE: adjustable. 3000mm (10') standard / up to 24600mm (80') maximum
- MATERIALS: blown glass, braided metal coaxial cable, electrical components, swag hooks, aircraft cable, brushed nickel canopy
- WEIGHT: approximately 3.4kg (7.6lb)
- POWER SUPPLIES: remote mounted (fixture does not hook directly to a junction box). Power supplies included

#### DESCRIPTION

The 'mo' designation in this 100 variant refers to the mini outie canopy. The mini outie canopy is 38mm (1.5") in diameter and 16mm (0.6") deep, which creates a subtle profile that will essentially disappear into the application surface. This fixture is designed to be horizontal, meaning that the pendants don't hang directly below, but instead trail off across a space, around a corner or simply deviate from their gravitational directive. As such, this fixture is designed to be hung from any number of optional swag points mounted elsewhere from the canopy.

100 brings multiple glass artists together in a performative act. Molten glass bubbles are prepared and then smashed together to produce unpredictable interlocking glass forms.

#### NOTES

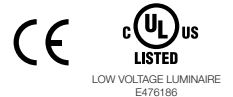
- + Purchase replacement lamps online at [www.bocci.com/shop/bulbs](http://www.bocci.com/shop/bulbs)
- + Aircraft cable lengths are adjustable on site - 3000mm (10') is the standard maximum. Drop lengths specified in 3m/10' increments and are cut to length on site with steel cable cutters (cutters not supplied).

US Patent Pending  
EU Patent # 008526131-0001

Made in Vancouver, Canada

Vancouver  
[sales@bocci.com](mailto:sales@bocci.com)  
[www.bocci.com](http://www.bocci.com)

Berlin  
[europe@bocci.com](mailto:europe@bocci.com)  
[www.bocci.com](http://www.bocci.com)



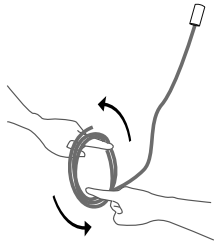
MINI OUTIE CANOPY

# 100.1mo

PRODUCT SPECIFICATION

© 2022, Bocci Design and Manufacturing Inc. All rights reserved. Any inquiries should be directed to: [info@bocci.com](mailto:info@bocci.com)

# BOCCI



1

Very carefully uncoil the braided coaxial cable in a spool like manner. Insert your index fingers into opposite sides of the roll then rotate your fingers around each other to unroll the coaxial cable.

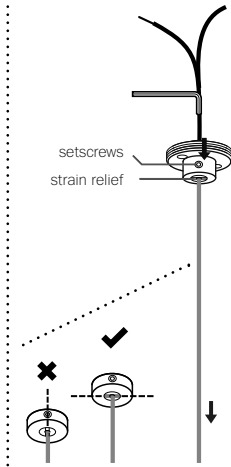
Use patience: allow the cable to uncoil completely to avoid kinks.



2

Drill a 9mm (0.35") diameter hole in ceiling material. Pull low voltage house wire through the hole.

Note: This low voltage wire will run to a remote mounted power supply.



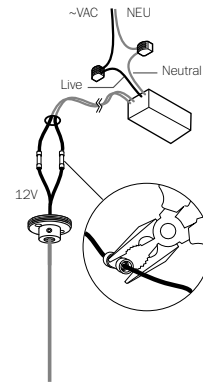
3

Determine the overall drop for the pendant fixture. Use the 2mm Allen key to loosen the setscrew in the canopy and gently feed the cable through the canopy until you have reached your desired drop length. Use Allen key to tighten the setscrew to hold the strain relief and secure the coaxial cable at its new length.

**DO NOT OVERTIGHTEN.**

Note: The strain relief is a black plastic collar around the coaxial cable. There is a single slot opening on the side of the strain relief component. It is essential that this opening is oriented at 90 degrees to set screw chamber. There can be no contact between the set screw and the cable.

**RISK OF ELECTRIC SHORT!**



4

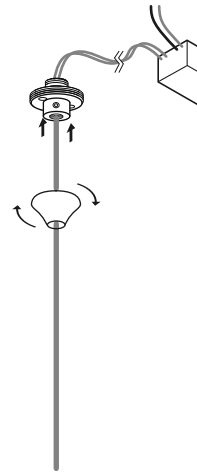
Xenon (110V) or LED: connect the black wire to black and white wire to white wire.

Xenon (230V): connect black wire to brown wire and white wire to blue wire.

Connect the house wires to the coaxial cable using #16 butt splices (stagger the splices). Use raw butt splices and heat shrink to simplify the installation.

For multiple pendant installations, ensure that the braided outer wires are all connected to one 12V output wire and all inner insulated wires are connected to the other or a short will occur.

Note: Insulated core is positive and braided exterior is negative.

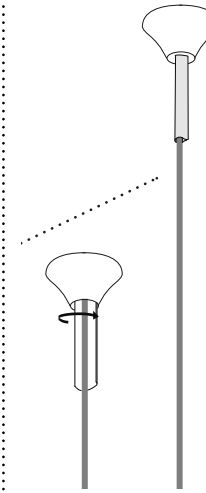


5

The client is responsible to ensure fasteners are attached to a robust structural substrate.

Affix mini-canopy to ceiling surface with fasteners provided. Twist the threaded outie cover into place.

**Turn power to fixture on.**

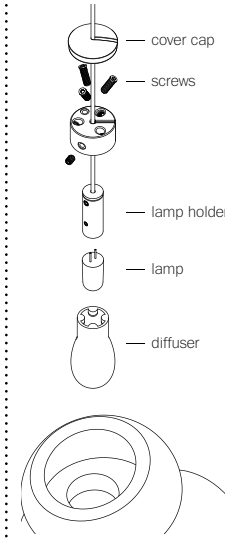


6

Use silicone caulking to fill the seam between the ceiling and the canopy.

Note: mask the coaxial cable off with painters tape to help with cleanup.

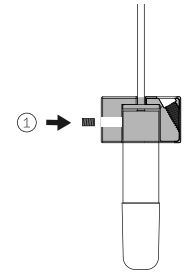
Paint over entire assembly.



7

Please note that the crisp out edges of the 100 pendants are fragile and can chip if not handled with care when installing and cleaning.

Bocci recommends wearing gloves during the installation. The edges of the glass may be sharp to handle.



8

Attach the lamp holder to the pendant hardware with set screw provided.

Plug the lamp into lamp holder. Do not touch the lamp with your bare hands. Ensure power to lamp is working correctly.

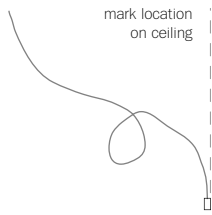
MINI OUTIE CANOPY

100.1mo

PRODUCT INSTALLATION INSTRUCTIONS

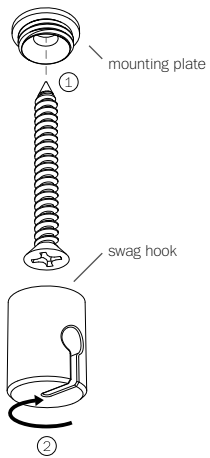
© 2021, Bocci Design and Manufacturing Inc. All rights reserved. Any inquiries should be directed to: info@bocci.com

**BOCCI**



9

Mark a point directly above the pendants desired location and screw.

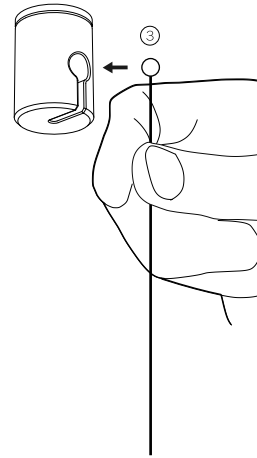


10

Ensure that the ceiling at the swag location is strong enough to hold 2kg (5lbs) before attaching swag hook with the provided screws.

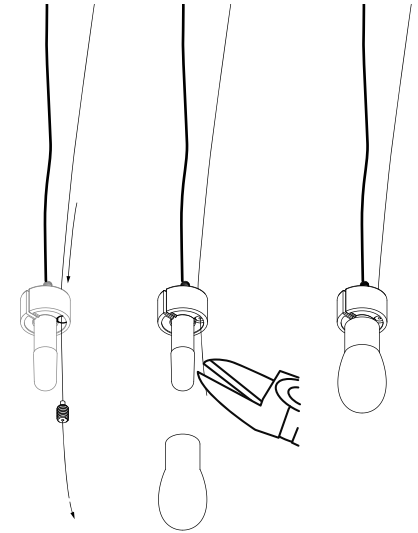
Set the screws (provided) into an appropriate anchor (not provided).

Thread the swag hook on to the mounting plate, ensuring all the threads are engaged.



11

Slide the ball end of the aircraft into the slot on the swag hook. Give this a pull test, make sure that the ball is seated.



12

Feed the aircraft cable through the pendant hardware and into the cable gripper. Slide the cable gripper into channel on the pendant hardware. Pull the aircraft cable and slide the cable gripper to adjust the height.

Once height of pendant is confirmed, cut the aircraft cable using aircraft cutters.

Slide on the diffuser.

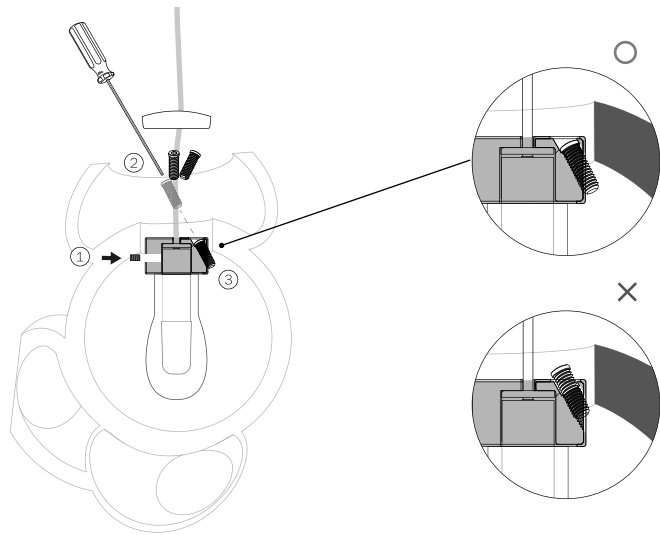
SEMI-RIGID

100.1mo

PRODUCT INSTALLATION INSTRUCTIONS

© 2022, Bocci Design and Manufacturing Inc. All rights reserved. Any inquiries should be directed to: [info@bocci.com](mailto:info@bocci.com)

**BOCCI**

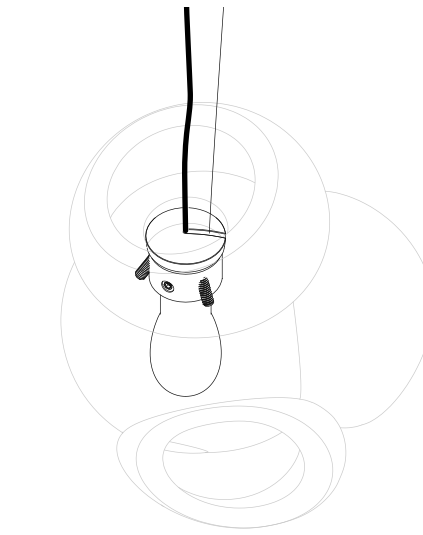


### 13

Insert the pendant hardware assembly into the pendant.  
Tighten the 3 screws until they are fully engaged (refer to illustration above).

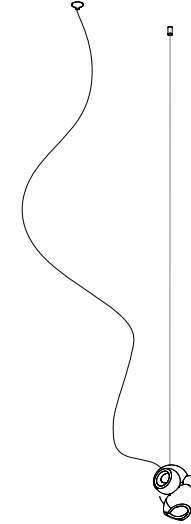
### 14

Give the pendant a gentle pull to ensure the screws are locked onto the pendant.  
Slide cover cap onto the coaxial cable and place into the inset portion of the pendant hardware.



### 15

The cover cap should sit flat on the pendant hardware.  
If the screws are sticking out and the cap isn't sitting flat on the pendant hardware, please check to ensure the screws are fully engaged.  
Refer to previous illustration for more details.



### 16

Clean fingerprints from surfaces.

For additional assistance,  
please contact Bocci:

Vancouver  
sales@bocci.com  
www.bocci.com

Berlin  
europe@bocci.com  
www.bocci.com

US Patent Pending  
EU Patent # 008526131-0001

Made in Vancouver, Canada



SEMI-RIGID

# 100.1mo

PRODUCT INSTALLATION INSTRUCTIONS