

ClanPro®

air

WARNING
Do Not use the Auto
Shut Off function on
Pressure below 30psi



12V CORDLESS TYRE INFLATOR MODEL NO: CTC150LI

PART NO: 7640300

OPERATION & MAINTENANCE INSTRUCTIONS

UK
CA | CE



ORIGINAL INSTRUCTIONS

GC03/22 Rev 1

INTRODUCTION




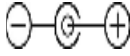



Thank you for purchasing this CLARKE Tyre Inflator. The CTC150Li can be used for inflating car, motorcycle and bicycle tyres, inflatable sports balls and other inflatables. The compressor is not waterproof and should not be used in any wet applications.

Before attempting to use the product it is essential that you read this manual thoroughly and carefully follow all instructions given. In doing so you will ensure the safety of yourself and that of others around you and you can also look forward to the product giving you long and satisfactory service.

Model	CTC150Li
Part No	7640300
Tyre Inflator	
Hose length	300mm
Max working pressure	10.3 Bar/150 psi
Max flow rate	22L/min
Ingress protection	IPX0 (non-waterproof)
Duty cycle	10 mins on/10 mins off
Dimensions (L x W x H)	315 x 78 x 265 mm
Weight	1.3 kg
12V Power supply	
Extending cable length	2.8 M
Plug type	In-car 12V plug-in adaptor
Battery Pack	
Battery Type	Lithium Ion
Battery capacity	12V / 2000mAh
Input	15V-0.5A
USB Output	5V-1A
Charging time	Approx 60 minutes
Power Adaptor for Battery Pack	
Cable Length	1m
Input	AC 230V~50Hz
Output	DC 15V-0.5A
Insulation Class	II

SAFETY SYMBOLS

The following safety symbols are shown on the product and/or it's packaging. Please read all of the safety and operating instructions carefully before use..

	Read this instruction booklet carefully before use		Lithium-Ion battery supplied to be re-cycled in accordance with regulations.
	Class II appliance without earth connection.		Positive tip plug-in connector
	Caution-hot surfaces		Danger;- potentially explosive battery material.
	Do not immerse battery in water.		

GENERAL SAFETY WARNINGS



WARNING: WHEN USING ELECTRICAL TOOLS, BASIC SAFETY PRECAUTIONS SHOULD ALWAYS BE FOLLOWED TO REDUCE THE RISK OF FIRE, ELECTRIC SHOCK AND PERSONAL INJURY.

WARNING: READ ALL THESE INSTRUCTIONS BEFORE ATTEMPTING TO USE THIS PRODUCT AND KEEP THESE INSTRUCTIONS IN A SAFE PLACE.

PERSONAL SAFETY

1. **ALWAYS** stay alert, watch what you are doing and use common sense when operating the tyre inflator. **DO NOT** use while you are tired or under the influence of medication, drugs or alcohol. A moment of inattention can result in personal injury.
2. **ALWAYS** protect yourself against electric shock. Never operate the tyre inflator in wet or damp locations.
3. **NEVER** over-reach. Keep your proper footing and balance at all times to enable better control of the tyre inflator in unexpected situations.
4. **NEVER** attempt any complex repairs yourself. If you have a technical problem contact your local CLARKE dealer.

5. **ALWAYS** store the tyre inflator out of reach of children.
6. **Keep the work area clean and well lit.** Floors should always be kept clear. Cluttered or dark areas invite accidents.
7. **DO NOT** work in enclosed areas or near naked flames.

GENERAL PRODUCT USE AND CARE

1. **ALWAYS** thoroughly familiarise yourself with this product and its operation and always read the instructions in this manual before using the product.
2. **NEVER** use this tyre inflator if any part is damaged. If so, have it inspected and repaired by your CLARKE dealer.
3. **NEVER** attempt to modify the fittings or attachments in any way. Doing so will invalidate the guarantee and could result in personal injury.
4. **NEVER** abuse the charging cable. **NEVER** pull on the cable when removing the plug from the socket or lift the tyre inflator by the power cable.
5. **NEVER USE A TYRE INFLATOR WHICH APPEARS DEFECTIVE OR IS OPERATING ABNORMALLY:** If the tyre inflator operates unusually or makes strange noises, switch off immediately. Arrange repairs with your CLARKE dealer.
6. **BEFORE USE CHECK THE TYRE INFLATOR AND HOSE FOR DAMAGE: NEVER** use the tyre inflator if it is damaged. Have it repaired by your CLARKE dealer. **DO NOT** use if the On/Off switch does not operate correctly.
7. Keep the motor air vents clear and free from dust.
8. Take care when using this tyre inflator to inflate small, low-pressure objects such as children's toys or footballs can explode if over-inflated.
9. **ALWAYS** use in a safe area away from traffic and other hazards.
10. **ALWAYS** ensure that tyre pressure checks are carried out to the tyre and vehicle manufacturer's recommended pressures.
11. **NEVER** overstretch the power lead or high pressure hose.

ENVIRONMENTAL RECYCLING POLICY



By purchasing this product, the customer is taking on the obligation to comply with current WEEE regulations.

This means that this product must not be disposed of with general household waste. It must be disposed of according to the laws governing Waste Electrical and Electronic Equipment (WEEE) at a recognised disposal facility.

This product contains valuable raw materials. Metal products should be taken to your local civic amenity site for recycling of metal products.

OVERVIEW



UNPACKING

After removing the tyre inflator from its packaging, check that it has not been damaged in transit. Report any damage immediately to the CLARKE dealer where the item was purchased.

ADAPTORS

Clipped to the top of the tyre inflator are three adaptors for different uses. These are provided to inflate sports balls, air beds, small inflatables and bicycle tyres etc. To avoid over-inflation, always follow manufacturer's instructions for the item to be inflated.

- Toy/air bed adaptor
- Sports ball adaptor
- 'Presta' bicycle tyre valve adaptor

WARNING
Do Not use the Auto Shut
Off function on these
types of application

WORKING CONDITIONS

1. **DO NOT** use the tyre inflator in a damp or wet environment. The compressor should only be used with good ventilation. There should be no dust, acids, vapour, explosive or flammable gases in the room.
2. **DO NOT** cover the tyre inflator. Always position it with good all-round air ventilation and that the air intake air is dry and dust free.

POWERING THE TYRE INFLATOR

NOTE: 230V mains + USB charges the battery,
Car charger charges the 12V power pack

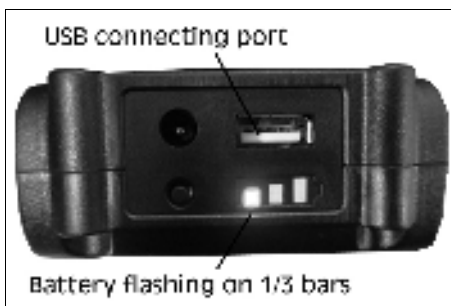
USING THE BATTERY

Charge the battery using the 230V mains power supply adaptor cable.

Connect one end to the battery pack and the other end to any mains power socket. The 3 x LED bars will all be illuminated when the battery is fully charged.

Fit the power pack to the base of the tyre inflator by sliding it forward until it clips into place.

NOTE: The base of the power pack can only slide one way.



USING A USB CABLE

Charge the battery using a USB cable (not supplied) via the USB port.

USING THE CAR CHARGER VIA THE POWER PACK

Power the tyre inflator directly from the vehicle 12V power pack using the car adaptor.

Fit the adaptor to the base of the tyre inflator by sliding it forward until it clips into place.

NOTE: The vehicle adaptor can only slide one way.



USING THE TYRE INFLATOR

1. Always inspect the tyre inflator before use to ensure the high pressure hose is in good condition.
2. Connect the air hose to the tyre inflator by screwing the hose into the end of the tyre inflator.
3. Connect the other end of the air hose to the valve stem of the item you are inflating.
 - An adaptor is supplied for inflating sport balls including soccer, basketballs and footballs.



NOTE: When inflating items of 10 PSI or less, inflate in short bursts and check after each burst by feel or with a calibrated measuring device to determine accurate pressure. Pressure required for most sports balls is too low for accurate reading on tool gauge.

4. Connect power to the tyre inflator using options on page 6.
 - The manufacturer set pressure is 35 PSI and this tyre inflator has memory function. The gauge will indicate units and value.
5. Press "SET" button to choose the desired unit (PSI, BAR, KPA, kg/cm²).
6. Press "-" or "+" button to choose the desired value. Press and hold "-" or "+" button will accelerate numerical change. After the screen flashes three times, the screen will show "0" and the system will enter the chosen unit.
7. Press the On/Off trigger to start and hold for continuous working.
 - The built-in LED light is on during inflation.



WARNING
Do Not use the Auto
Shut Off function on
Pressure below 30psi

- For continuous inflation you can push the switch lock upwards to lock while the On/Off trigger is depressed. In this way, inflation continues without pressing any button. To stop, simply squeeze the trigger to release the locking switch.

NOTE: Note that the tyre inflator has a 10 minute running/10 minutes resting duty cycle.



- When the desired pressure is reached, the tyre inflator will stop working as it has pre-set function. when the desired the pressure is reached, the reading may have a +/- 3.0 PSI difference. (This is normal)
8. After use, loosen the hose and remove from the tyre inflator.



WARNING: THE HOSE WILL BE HOT AFTER USE. REMOVE CAREFULLY.

WARNING: IMPROPERLY ATTACHED HOSES OR ACCESSORIES CAN BECOME DETACHED UNDER PRESSURE AND CAUSE SERIOUS INJURY. POSSIBLE AIR LEAKS CAN CAUSE FAULTY PRESSURE READINGS. MAKE SURE ALL CONNECTIONS ARE TIGHTLY SECURED.

WARNING: THE GAUGE IS ONLY TO BE USED AS A REFERENCE, ALWAYS CARRY OUT A FINAL CHECK OF THE TYRE PRESSURE WITH A GAUGE CONFORMING TO BS EN 12645.

- When not in use, adaptors provided with the compressor can be clipped to the storage area on the top of the compressor.

TYRE INFLATION

1. Fix the tyre valve connector onto the vehicle tyre valve, ensuring the valve is clean.
- When connected correctly, the digital display will show the current pressure in the tyre. If this is the correct tyre pressure as stated in your vehicle handbook, remove the valve connector.
2. If the tyre is below the recommended pressure (as specified in your vehicle handbook), press either the '-' or '+' pre-set button to adjust the pre-set value on the display to the correct tyre pressure.



NOTE: The unit will default to the last tyre pressure set. You can then adjust this using the '-' or '+' buttons.

3. Press the Power Switch to 'ON'.
4. The tyre inflator will now inflate your tyre to the pre-set pressure and switch off automatically when the pressure is reached. Towards final inflation, the tyre pressure display reading will be slightly higher than the selected pressure. When the tyre inflator stops, the final reading will be the selected pressure. This is a normal function of the unit.
5. Switch OFF the tyre inflator and remove the tyre valve connector from the tyre valve, returning the hose to its storage position.

IMPORTANT: The '-' or '+' buttons should never be pressed while the tyre inflator is running.

If you leave the tyre inflator connected to the 12V supply but do not inflate the tyre, after a few minutes the Digital Display will switch off. To turn back on, press the Pressure Format Select Button.

- When inflating tyres with normal "Schrader" valves, no adaptors need to be fitted to the hose.
 - Presta valves require the adaptor to be screwed onto the valve before attaching the hose.
6. Avoid inflating the objects above the recommended inflation pressure. This could lead to damage and /or injuries.

MAINTENANCE

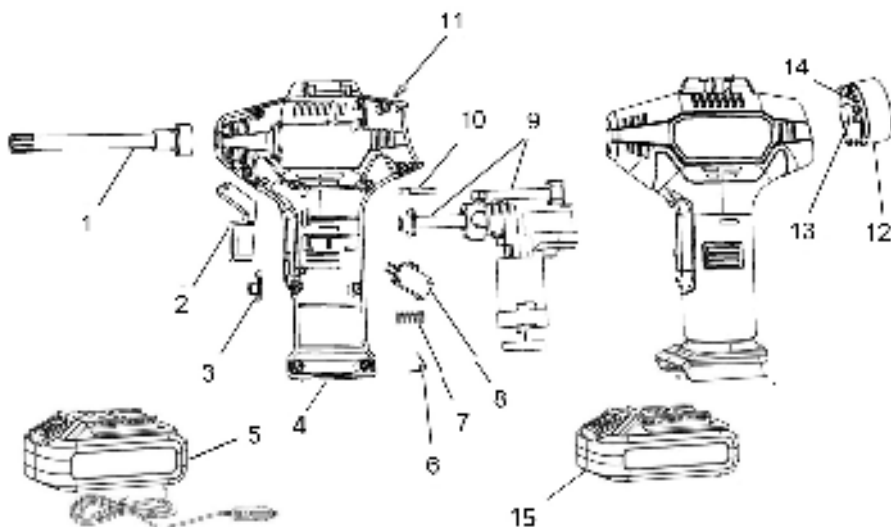
Keep the tyre inflator free of dirt and dust as far as possible. Wipe with a clean cloth or blow it down with compressed air at low pressure. Do not use cleaning agents or solvents as these may be aggressive to the plastic parts. Ensure that no water can get into the interior of the tyre inflator

Your CLARKE tyre inflator has been designed to give long and trouble free service. If, however, having followed the instructions in this booklet carefully, you encounter problems, take the tyre inflator to your local CLARKE dealer.

The car adaptor incorporates a 15A fuse which can be replaced by unscrewing the end of the plug.

Store the tyre inflator in a dry location.

COMPONENT PARTS



No	Description
1	Flexible hose attachment
2	Trigger
3	Trigger Lock switch
4	Locating base
5	12V Adaptor
6	Hair spring
7	Coil spring
8	Operating switch

No	Description
9	Motor/pump assembly
10	Nozzle attachment
11	Screw
12	Display housing
13	Pressure selector PCB
14	Digital display
15	Battery Pack

GUARANTEE

This CLARKE product is guaranteed against faulty manufacture for a period of 12 months from the date of purchase. Please keep your receipt as proof of purchase. This guarantee is invalid if the product is found to have been abused or tampered with in any way, or not used for the purpose for which it was intended.

Faulty goods should be returned to their place of purchase, no product can be returned to us without prior permission. This guarantee does not effect your statutory rights.

A SELECTION FROM THE VAST RANGE OF

Clarke®

QUALITY PRODUCTS



AIR COMPRESSORS

From DIY to industrial, Plus air tools, spray guns and accessories.

GENERATORS

Prime duty or emergency standby for business, home and leisure.

POWER WASHERS

Hot and cold, electric and engine driven - we have what you need.

WELDERS

Mig, Arc, Tig and Spot, from DIY to industrial class.

METALWORKING

Drills, grinders and saws for DIY and professional use.

WOODWORKING

Saws, sanders, lathes, mortars and dust extraction.

HYDRAULICS

Cranes, body repair kits, transmission jacks for all types of workshop use.

WATER PUMPS

Submersible, electric and engine driven for DIY agriculture and industry.

POWER TOOLS

Angle grinders, cordless drill sets, saws and sanders.

STARTERS/CHARGERS

All sizes for car and commercial use.



**PARTS & SERVICE:
0208 988 7400**

Parts Enquiries

Parts@clarkeinternational.com

Servicing & Technical Enquiries

Service@clarkeinternational.com

SALES: UK 01992 565333 or Export 00 44 (0)1992 565335

Clarke INTERNATIONAL Hornall Street, Epping, Essex CM18 4LG
www.clarkeinternational.com