

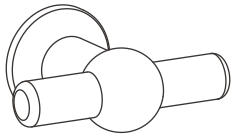
Cabinet handles

INSTRUCTIONS

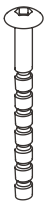
Cabinet knobs	1
Oxford extra-small handle	3
Elm cup handles	5
Cabinet pull handles	8

Cabinet knobs

INCLUDED



Knob x1



Screw x1

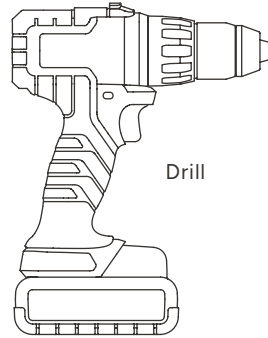


Round sticker x1



Threadlock x1

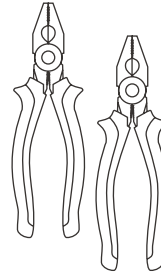
TOOLS YOU'LL NEED



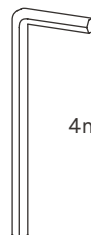
Drill



5mm drill bit

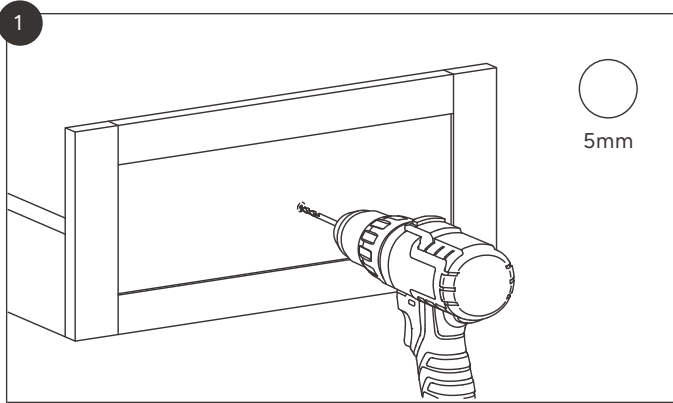


Two pairs of pliers

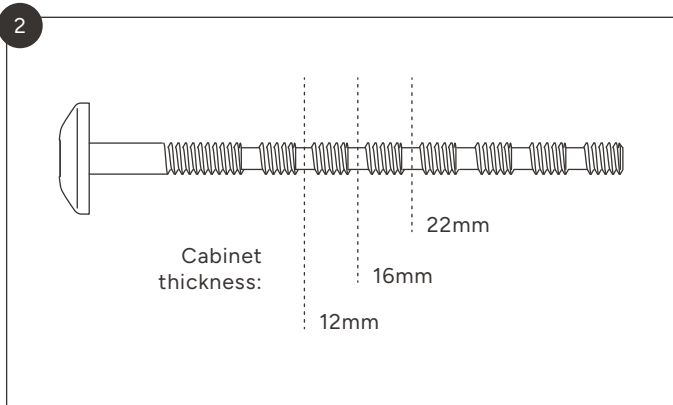


4mm hex key

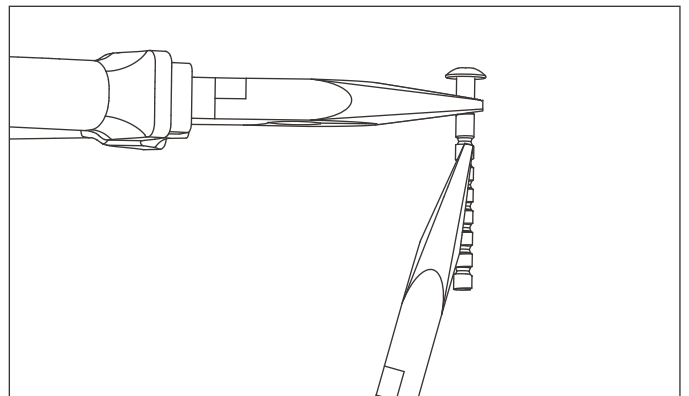
Cabinet knobs



Mark and drill a 5mm clearance hole for the screw.

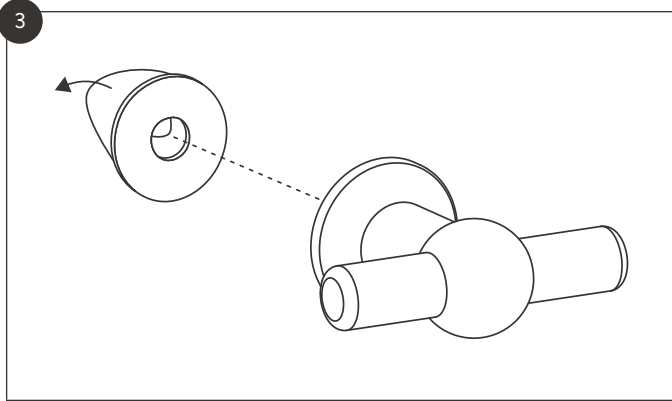


Clip the screw to size. The dimensions above are common sizes; if you're unsure which size is yours, make sure the screw protrudes by around 8mm.

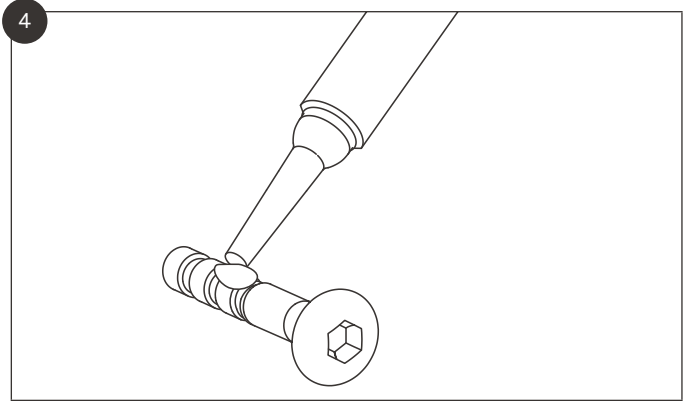


Crimp the required interval to create a fault line where the screw will break. Use this to snap the screw.

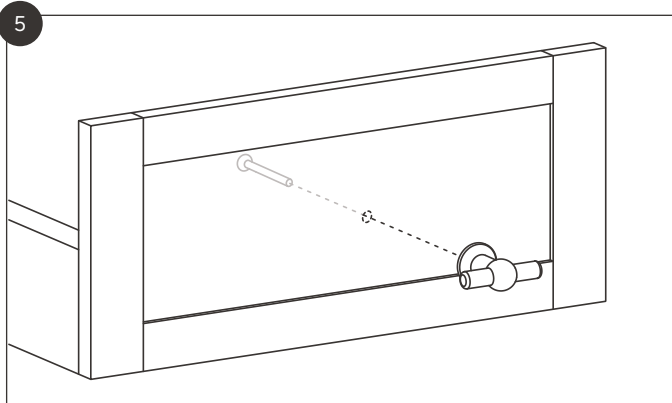
Cabinet knobs



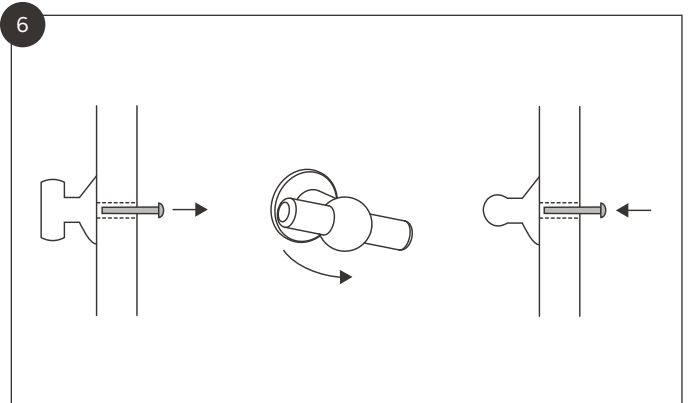
If provided, stick the double-sided sticker onto the back of the knob and peel off the remaining backing.



Apply a small amount of threadlock to the screw.



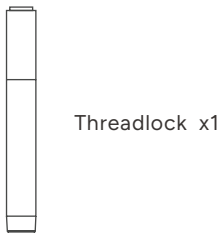
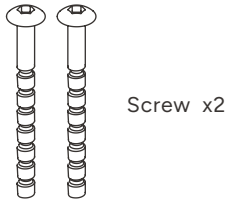
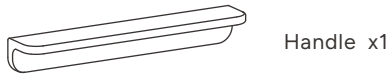
Screw the knob into position, holding the knob stationary rather than the screw. **Important: do not use an impact driver as it may irreparably damage the product.**



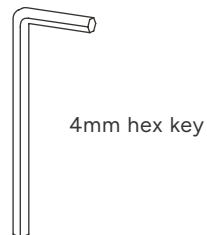
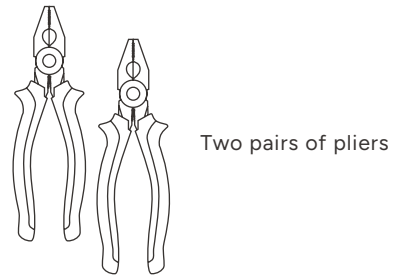
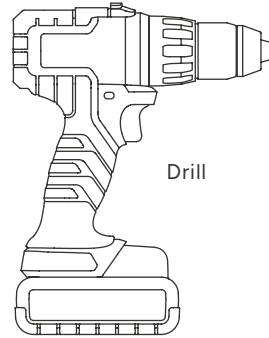
If the knob isn't straight: loosen the screw, straighten the knob and retighten.

Oxford extra-small handle

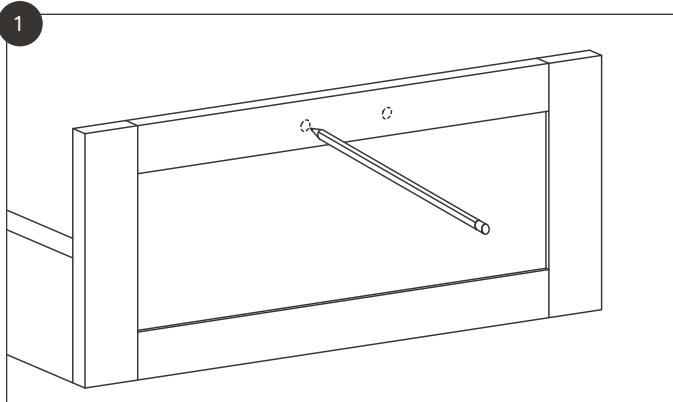
INCLUDED



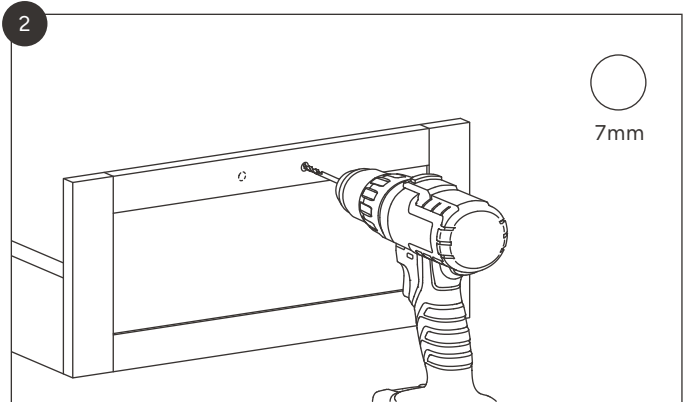
TOOLS YOU'LL NEED



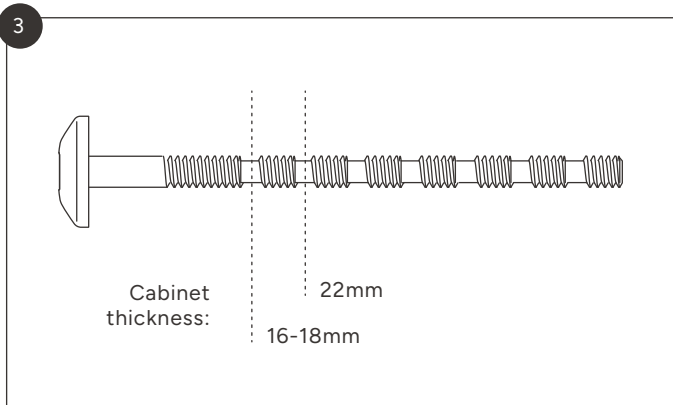
Oxford extra-small handle



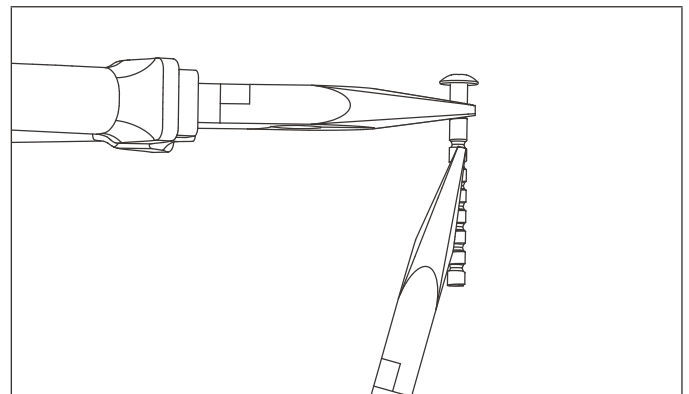
1 Mark the hole positions in the desired handle location.



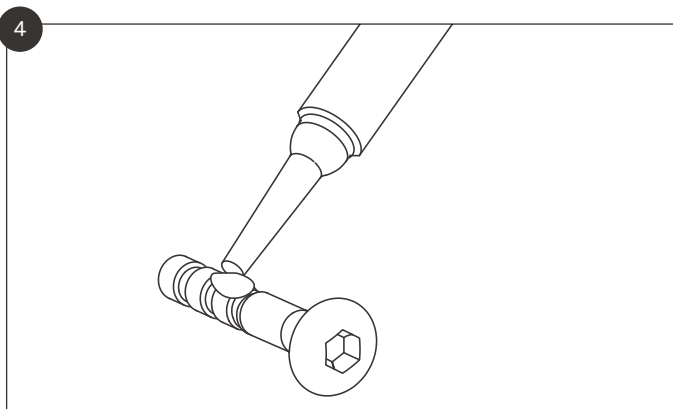
2 Drill the holes as marked with a 7mm drill bit.



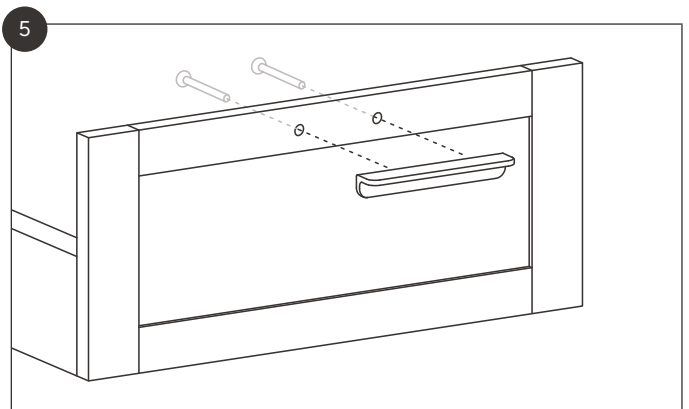
3 Use pliers to snap the screws to size. The dimensions above are common sizes; if you're unsure which size is yours, make sure the screw protrudes by around 8mm.



4 Crimp the required interval to create a fault line where the screw will break. Use this to snap the screw.



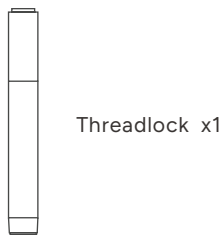
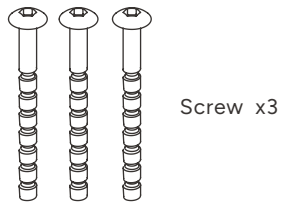
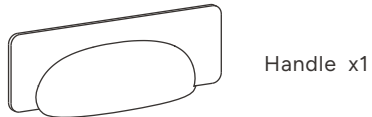
5 Apply a small amount of threadlock to the screw.



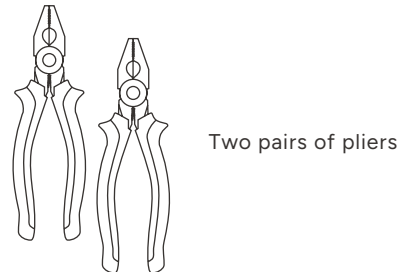
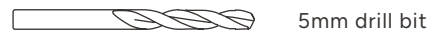
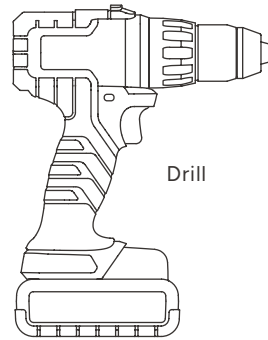
6 Screw the handle into position. **Important: do not use an impact driver as it may irreparably damage the product.**

Elm cup handles

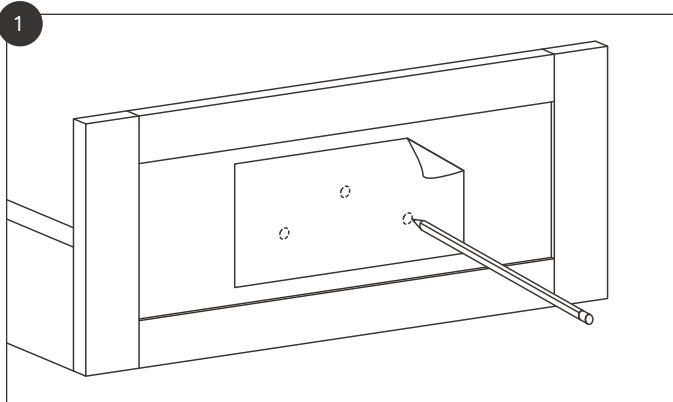
INCLUDED



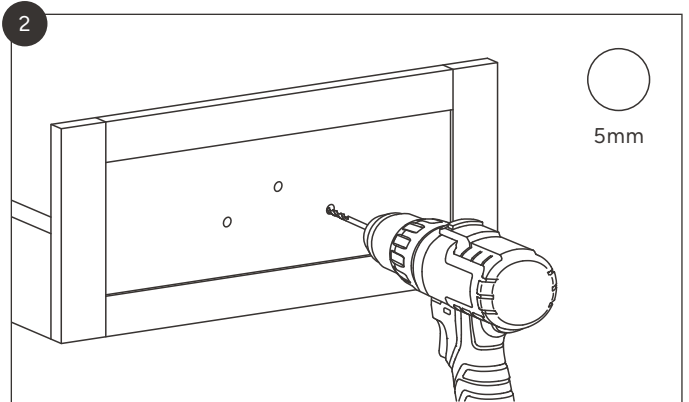
TOOLS YOU'LL NEED



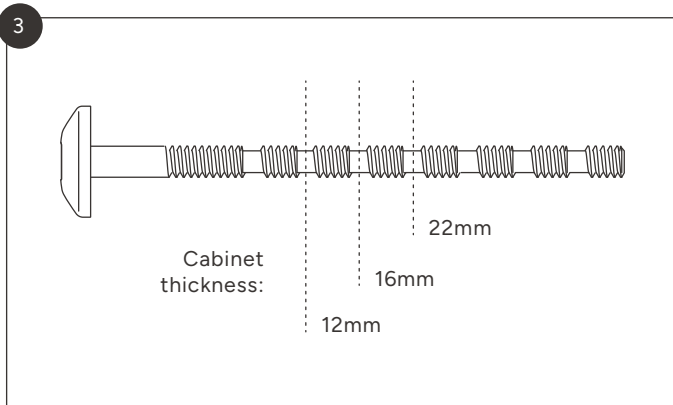
Elm cup handles



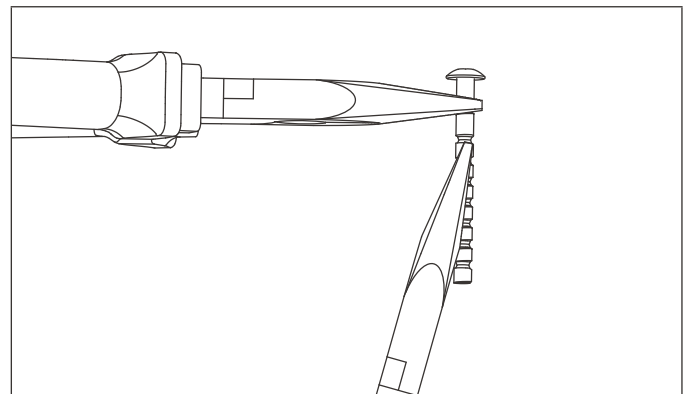
1 Mark the hole positions on the cabinet using the template on page 8.



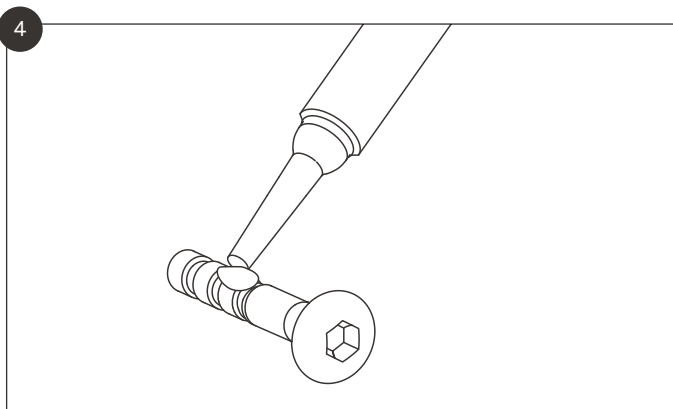
2 Drill the holes as marked with a 5mm drill bit.



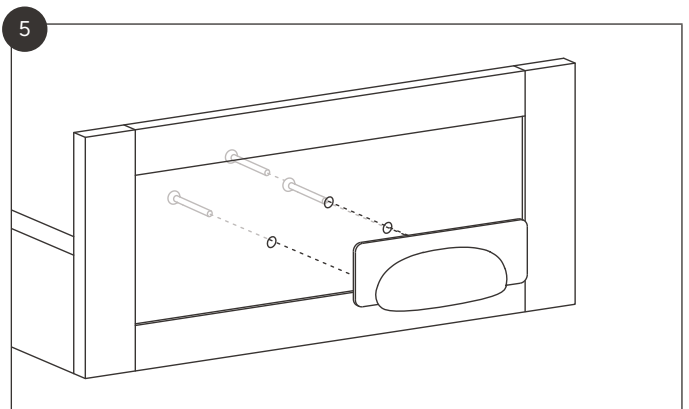
3 Clip the screw to size. The dimensions above are common sizes; if you're unsure which size is yours, make sure the screw protrudes by around 8mm.



4 Crimp the required interval to create a fault line where the screw will break. Use this to snap the screw.

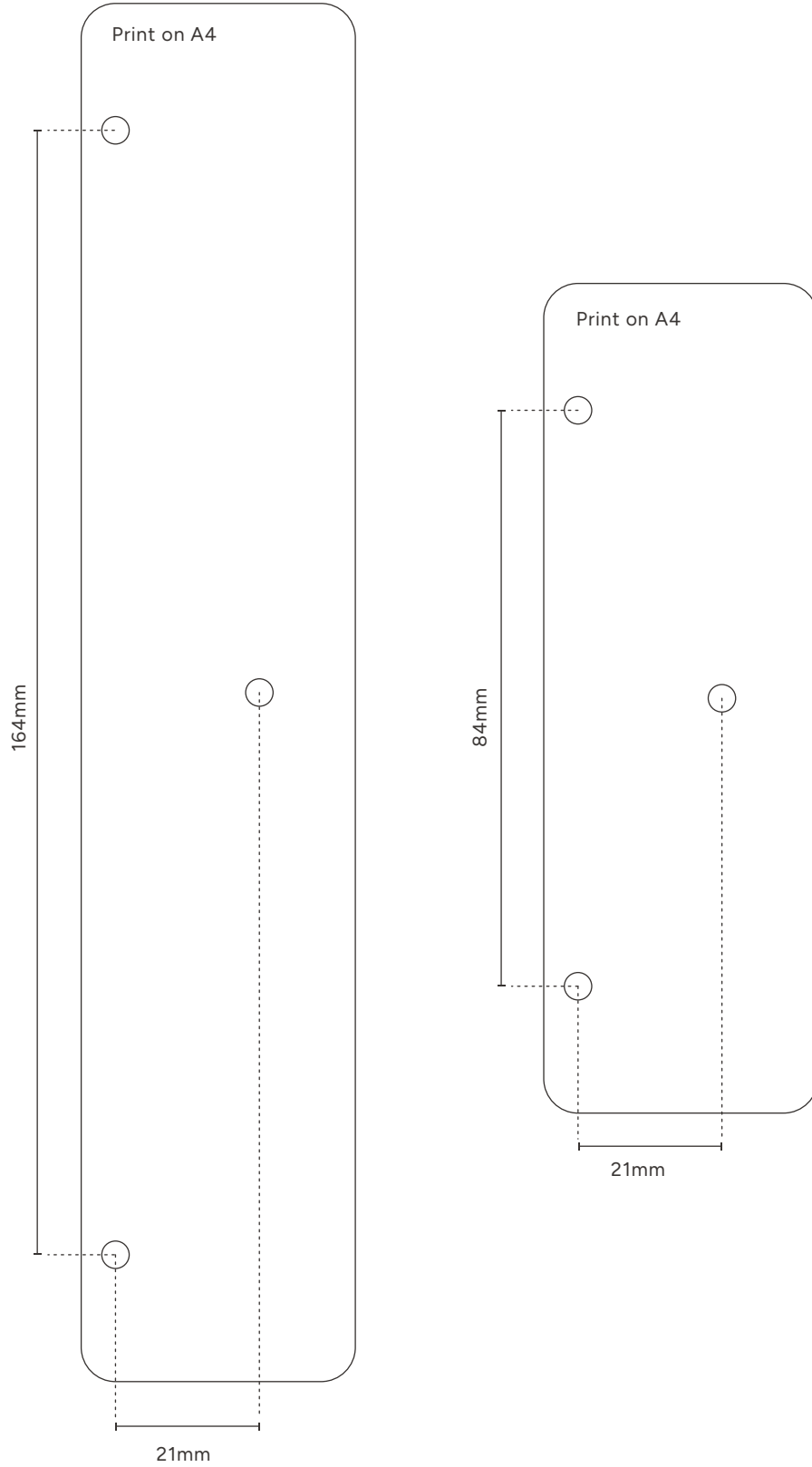


5 Apply a small amount of threadlock to the screw.



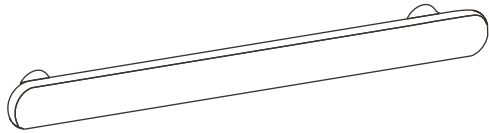
6 Screw the handle into position. **Important: do not use an impact driver as it may irreparably damage the product.**

Elm cup handles

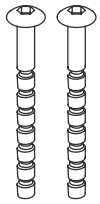


Cabinet pull handles

INCLUDED



Handle x1

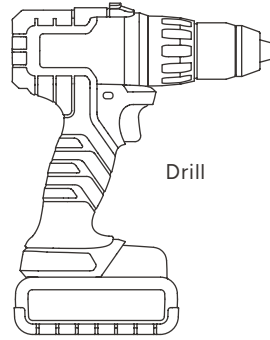


Screw x2



Threadlock x1

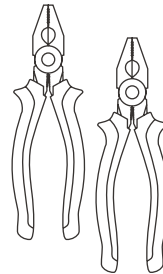
TOOLS YOU'LL NEED



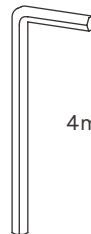
Drill



5mm drill bit

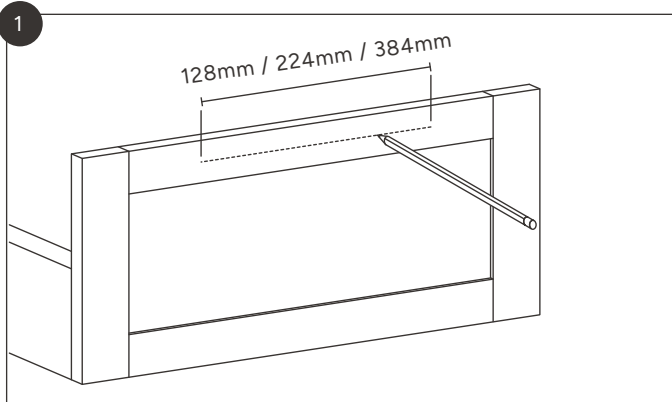


Two pairs of pliers

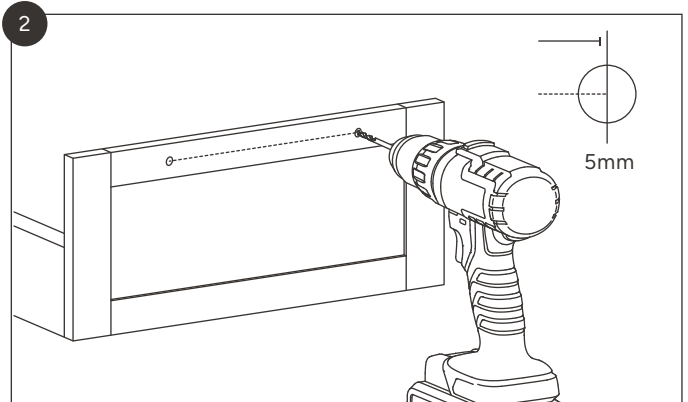


4mm hex key

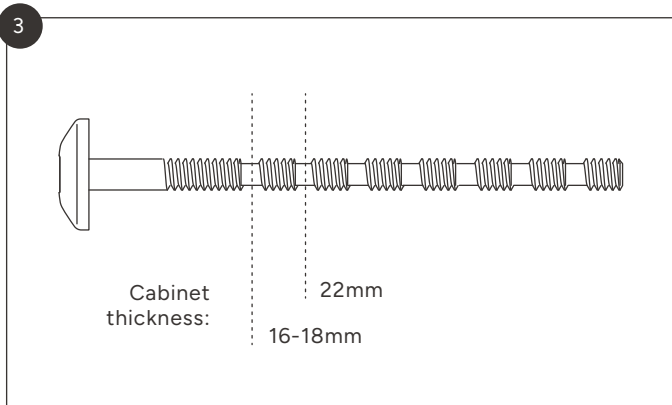
Cabinet pull handles



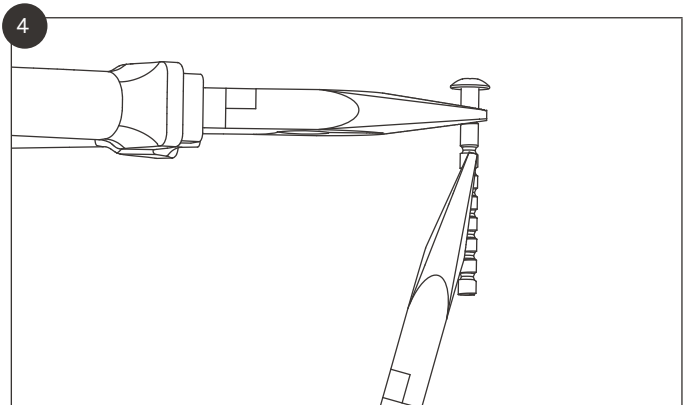
1 Mark a horizontal line in the desired location of the handle. Do this according to the screw-spacing distance of your handle. For small pull handles the distance is 128mm, for medium it's 224mm and for large it's 384mm.



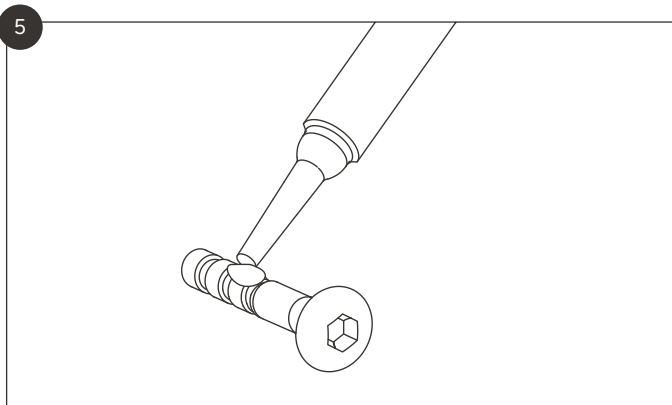
2 Drill a 5mm clearance hole at each end of the line.



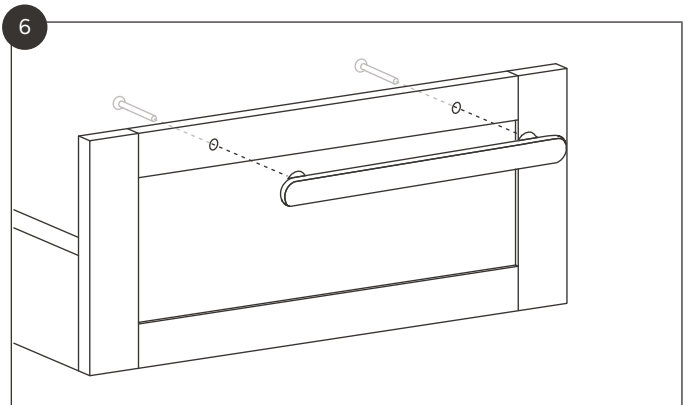
3 Clip the screw to size. The dimensions above are common sizes; if you're unsure which size is yours, make sure the screw protrudes by around 8mm.



4 Crimp the required interval to create a fault line where the screw will break. Use this to snap the screw.



5 Apply a small amount of threadlock to the screw.



6 Screw the handle into position. **Important: do not use an impact driver as it may irreparably damage the product.**