
Instructions for Deck Box Lock

EAST OAK

✉ support@eastoak.com

🌐 eastoak.com

☎ 1-833-EAST-OAK (USA)

EAST OAK

TO OPEN THE LOCK

1

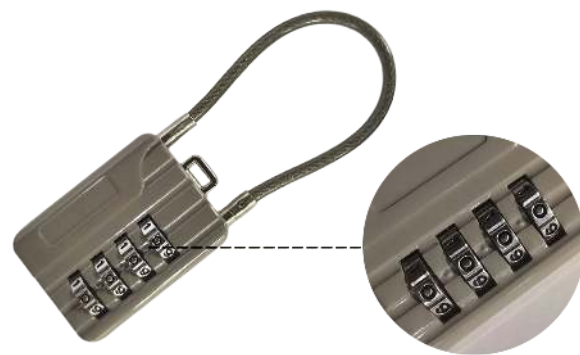
"0-0-0-0" is the default combination.
To open the lock, press the button above.
Please align the code line on the front side with the combination.



CREATE A NEW COMBINATION

1

Set the combination to 0-0-0-0 on the front side.
Then open the lock.



2

Keep a metal rod or thin stick against the bottom keyhole and then turn the number to the desired combination.

Once you have released the metal against the keyhole, you are finished.



QUESTIONS/CONCERNS

Your satisfaction is important to us. If you have any questions or concerns regarding the quality, please feel free to let us know and our team will reply within 24 hours.

✉ support@eastoak.com

🌐 eastoak.com

☎ 1-833-327-8625 (USA)