

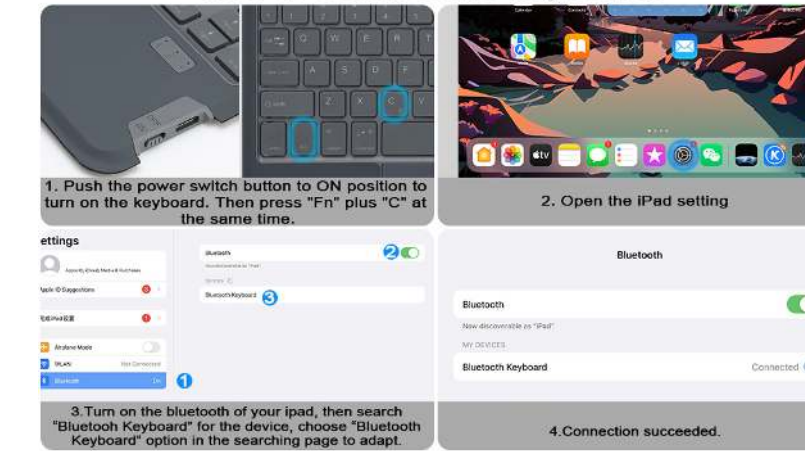
User Manual

iPad Keyboard Case



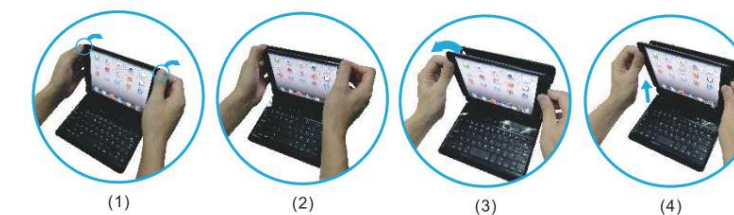
Connection Instructions

How to connect the keyboard?

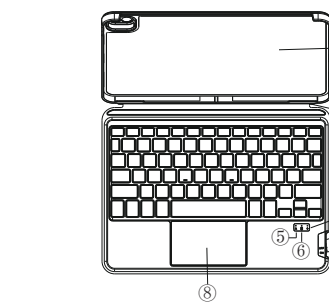


Installation and Removal Case

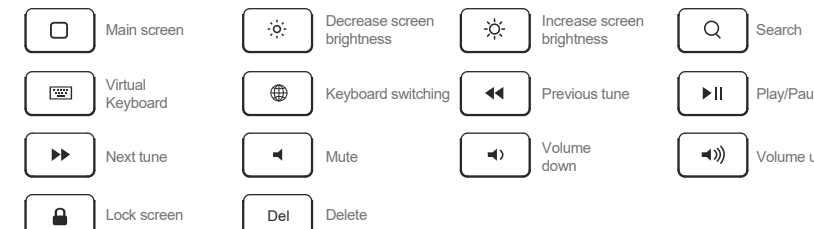
- 1) Removing back protective piece: hold iPad on both sides and use thumbs to gently push off the back cover (see photo). Cover is held in place by two tabs.
- 2) Proceed to "peel" cover away from iPad.
- 3) Take iPad out.
- 4) Take iPad out upwards.



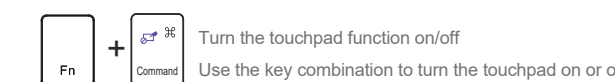
Keyboard Overview



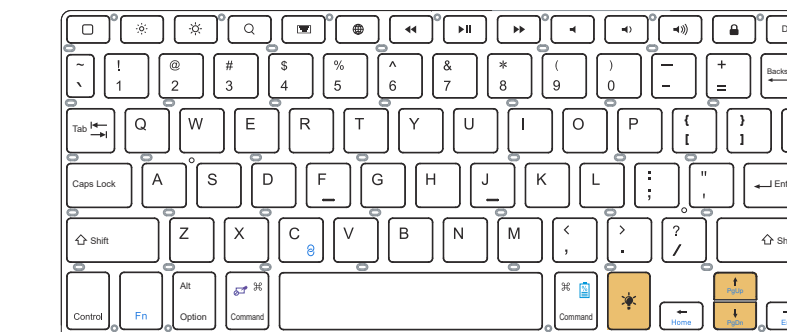
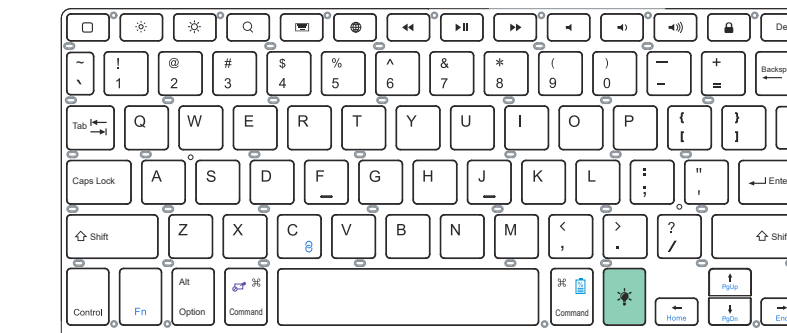
1. Protective case
2. Magnetic stripe
3. USB charging
4. Power switch
5. CAPS light
6. PAIR light
7. CHRGR light
8. Touchpad



⑤ CAPS Light	Press the Caps Lock on the keyboard, the indicator light is blue.
⑥ PAIR Light	Press Fn+C to enter Bluetooth pairing, the light flashes blue, and the pairing is completed and goes out.
⑦ CHRGR Light	Battery low: Slowly flashes red. Charging: Steady red. Charge complete: Green light



Backlight Control



Touchpad Functions

Note: Please upgrade iPad to the latest iOS system (13.4.1 and above is the best)

Trackpad Gestures	iOS S ystem	Trackpad Gestures	iOS S ystem
	Single Click - Press the trackpad with one finger until you feel a click		Scroll Up or Down - Swipe up or down with two fingers
	Click and Hold - Press and hold the trackpad with one finger		Scroll Left or Right - Swipe left or right with two fingers
	Drag - Click and hold an item then slide the finger across the trackpad to move it		Zoom - Place two fingers near each other on the trackpad, then spread them apart to zoom in or bring them closer together to zoom out
	Wake iPad - Click the trackpad or press any key on your external keyboard		Go Home - Swiping up with three fingers
	Dock - Swipe the pointer past the screen bottom with one finger to access the dock		Today View - Get to the first Home screen, then swipe right with two fingers
	Home Screen - You can swipe down with single finger to the bottom to pull up your dock or you can click the home indicator (the horizontal line) at the bottom of the screen on Face ID-equipped iPad models to launch the home screen		Search - Swipe down with two fingers on any Home screen
	Slide Over - You can slide right with one finger to show it and slide it back right again to hide it		Secondary Click - Tap with two fingers to show the contextual menu for Home screen icons, email messages, the Camera button in Control Center and other items, or you can press the control key on your external keyboard.

Charging

1. The keyboard charging port is TYPE-C charging port, the input of the voltage can not exceed DC-5V the keyboard will be broken if the voltage exceed the limit.
2. Connect the TYPE-C plug of the charging cable to the keyboard charging socket the other side is connected to the charger of the tablet PC or the charging interface of the tablet PC charges the keyboard.
3. Please charge it for at least 3 hours before using for the first time and then charging at least 2 hours when it is low battery in the future.
4. The green indicator light flashes, low battery, please charge it on time.
5. When charging, please check whether the charging port is powered normally.

Note: Please do not charge the keyboard for a long time. Keeping it plugged in for a long time will deplete the keyboard's battery life

Packing List

1. iPad Keyboard
2. Keyboard Case
3. Type-C Charging Cable (No Charger)
4. Keyboard Manual

Technical Specifications

Operating voltage	3.0-4.2V	Sleep current	<40uA
Length of operation	≥5 hours	Working current	≤85-120mA
Stand-by current	≤1mA	Low battery alarm	3.0-3.3V
Battery capacity	About 500 mAh	Stand-by time	≤180 days
Button life	3 million taps	Battery Life	2 years
Connection distance	≤10m	Keystroke	50-70g
Recharging current	≤300mA	Charging port	Type c interface
Reconnect time	5 seconds	Charging time	2-3 hours
Pairing password	No	Wake-up time	≤2 seconds
Number of keys	78 keys	Operating temperature	-10℃~55℃

Safety Caution

1. Keep the item away from sharp objects.
2. Do not place heavy object on the keyboard.
3. Away from microwave items.
4. Do not force or distorted the keyboard.
5. Keep away from oil, chemical or other organic liquid, items.

FAQ

Question	Answer
The LED indicator did not light up when the keyboard was turned on.	The keyboard battery is empty. Charge it according to the instructions in the "Charging" section.
The tablet did not find the keyboard.	Make sure you have pressed the "Connect" button. You should see a flashing blue LED. If the LED indicator is not flashing, the keyboard will not be visible to your device.
Pairing failed. The keyboard is in the list of searched available wireless devices.	Turn off the keyboard and delete it from the search list on your tablet. Then start the search again and perform a new pairing.
The keys do not work after pairing.	Check the input setting of the tablet. Make sure that all the settings are ON. If not, change the setting.
If the pairing between the keyboard and tablet PC is failed or wrong character and typing delayed.	Delete all the Bluetooth device on the tablet PC. Switch off the Bluetooth function on the tablet PC. Reboot the tablet PC; then switch on Bluetooth function on your tablet PC and pair again.

Contact Us

If you have any use problems with our keyboard, please do not hesitate to contact us via qulose@outlook.com. Please rest assured that we will definitely help you solve them! The device is provide with one-year limited hardware warranty from the purchase day.