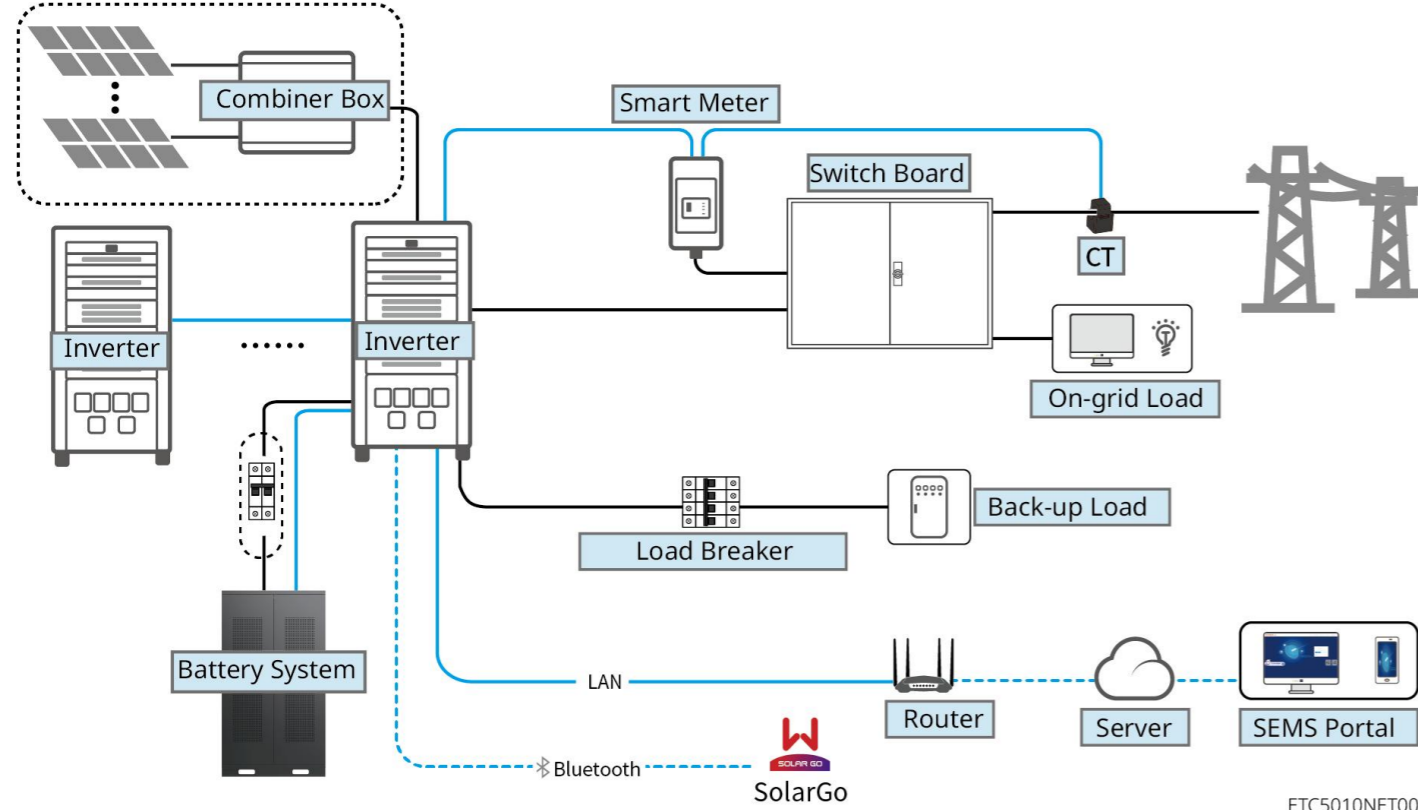


! WARNING

The information in this quick guide is subject to change due to product updates or other reasons. This guide cannot replace the product labels or the safety precautions in the user manual unless otherwise specified. All descriptions in the manual are for guidance only.

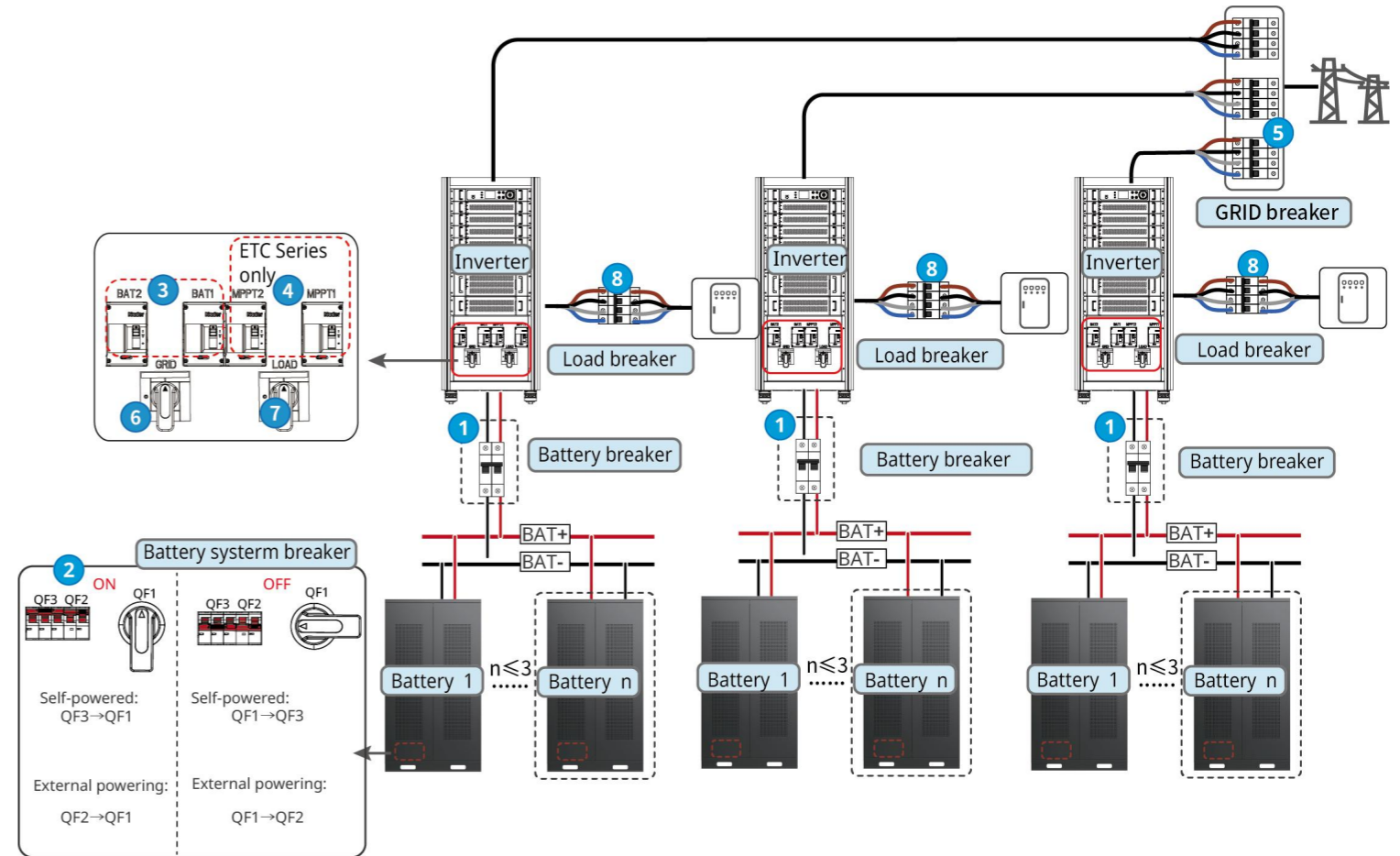
01 Networking



ETC5010NET0001

Device	Model	Description
Inverter	ETC Series: • GW50K06-ETC • GW50K07-ETC • GW100K06-ETC • GW100K07-ETC BTC Series: • GW50K06-BTC • GW50K07-BTC • GW100K06-BTC • GW100K07-BTC	<ul style="list-style-type: none"> A maximum of 4 inverters can be connected in a parallel system. Inverters of different power or different series (ETC & BTC) can be mixed in a parallel system. Inverter firmware requirements for parallel connections: <ul style="list-style-type: none"> Consistent firmware version ARM version: 02.94 or above DSP version: 02.553 or above
Battery system	Lynx C Series: • LX C101-10 • LX C120-10 • LX C138-10 • LX C156-10	<ul style="list-style-type: none"> A maximum of 8 battery systems can be clustered in a system. Do not mix connect battery systems of different versions.
Smart Meter	<ul style="list-style-type: none"> GM3000C GM330 	Order the CT for GM330 from GoodWe or other suppliers. CT ratio: nA/5A. <ul style="list-style-type: none"> nA: CT primary input current, n ranges from 200 to 5000. 5A: CT Secondary input current.

02 Power On/Off



Power on/off

ETC Series:

Power on



Power off



BTC Series:

Power on



Power off



03 Installations

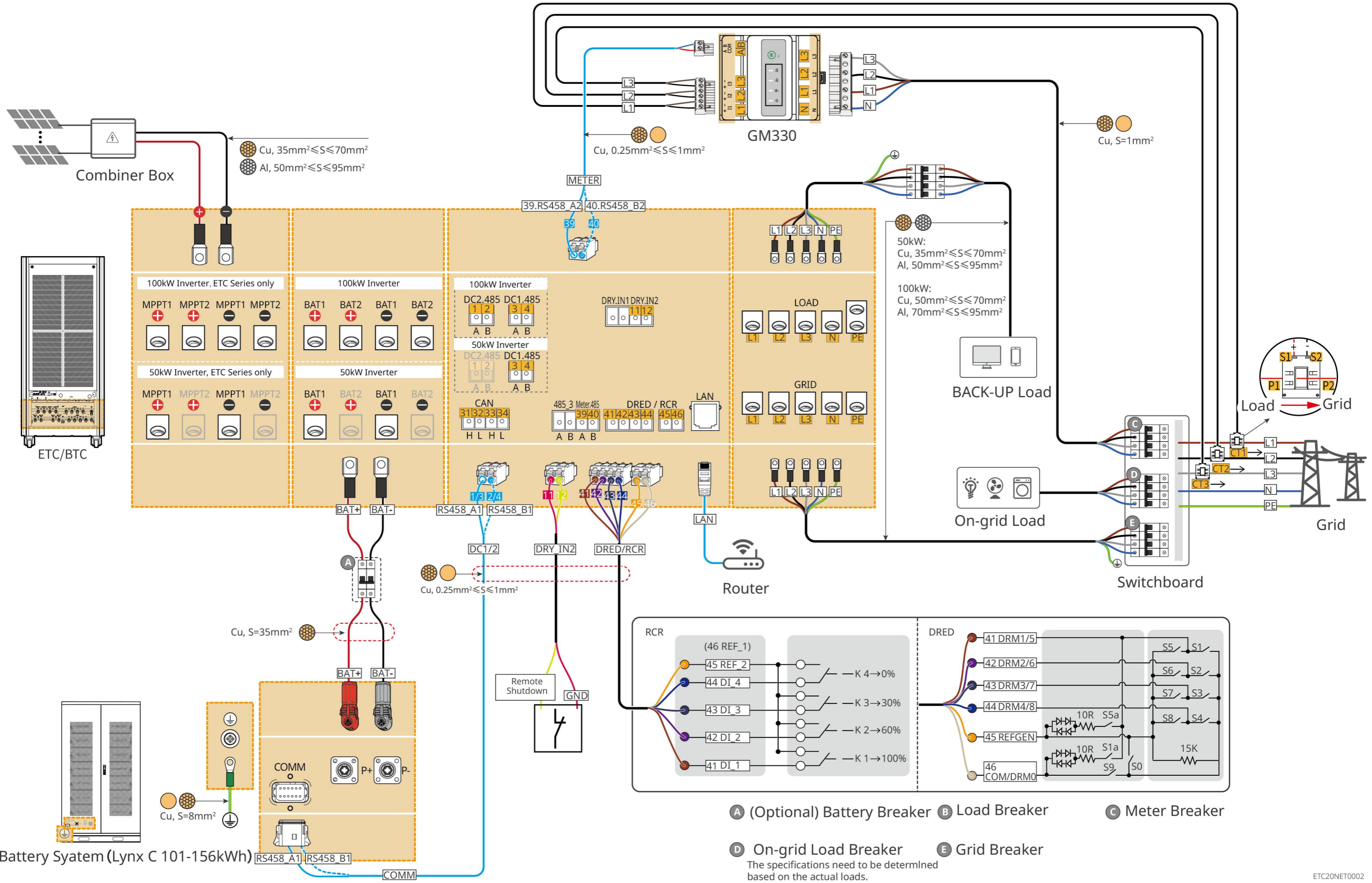
Steps	1 Installation	2 PE	3 PV (ETC series only)	4 Battery	5 AC
Inverter					
Tools		M8 \oplus 8-10N·m 		 BAT 1 BAT 2 	 M8 \oplus 8-10N·m

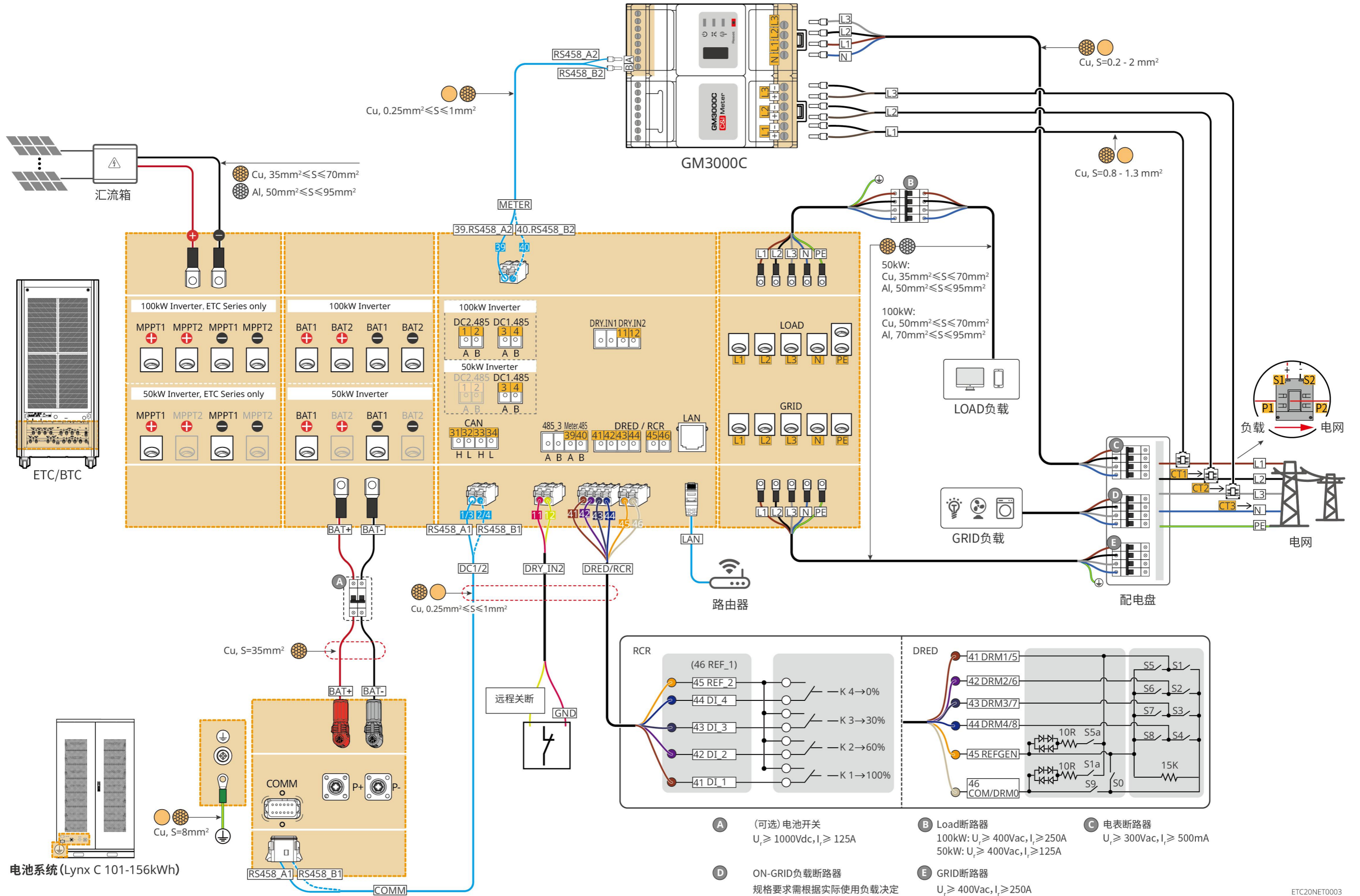
Steps	6 COM	1 Installation	2 PE	3 Power Cable	4 COM
Inverter					
Tools	 	M6 \oplus 4.5-6N·m 	M8 \oplus 10N·m 	M8 \oplus 10-12N·m 	

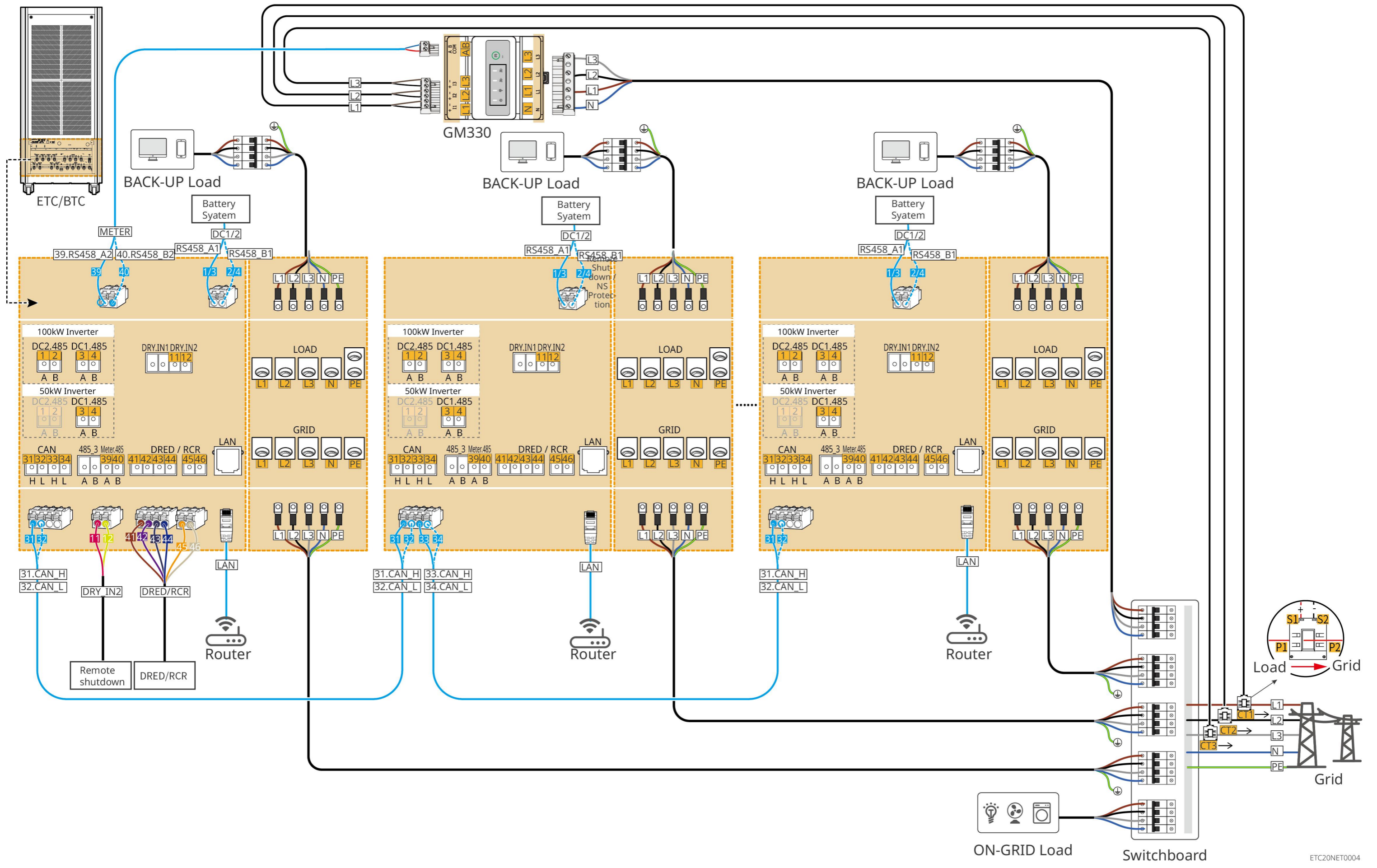
Steps	1 Installation	2 Cable Connections	3 Power	4 Commissioning
Smart meter	GM330 	GM330 		
	GM3000C 	GM3000C 		

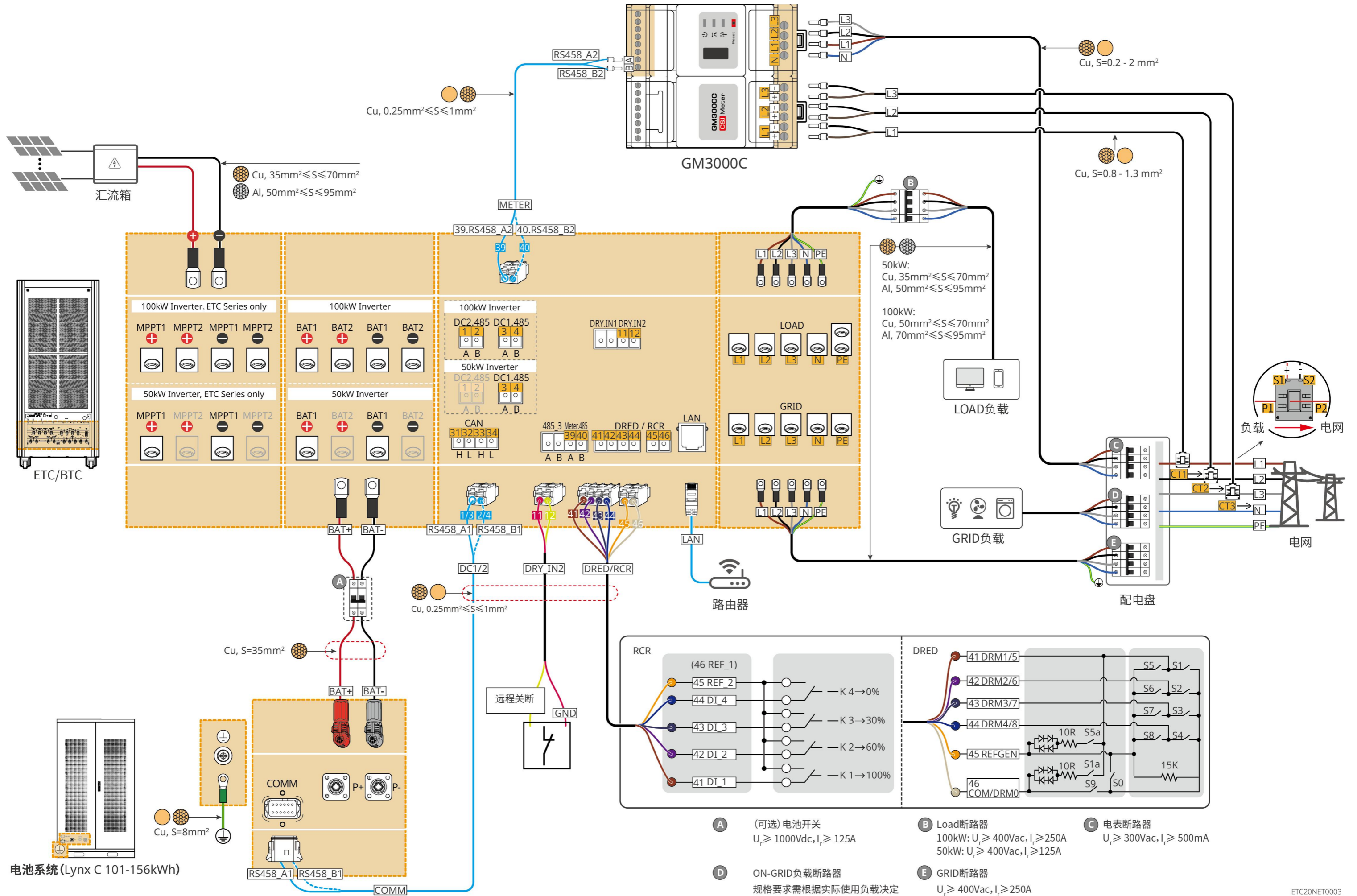
04 Wiring Diagram

Single Inverter + GM330

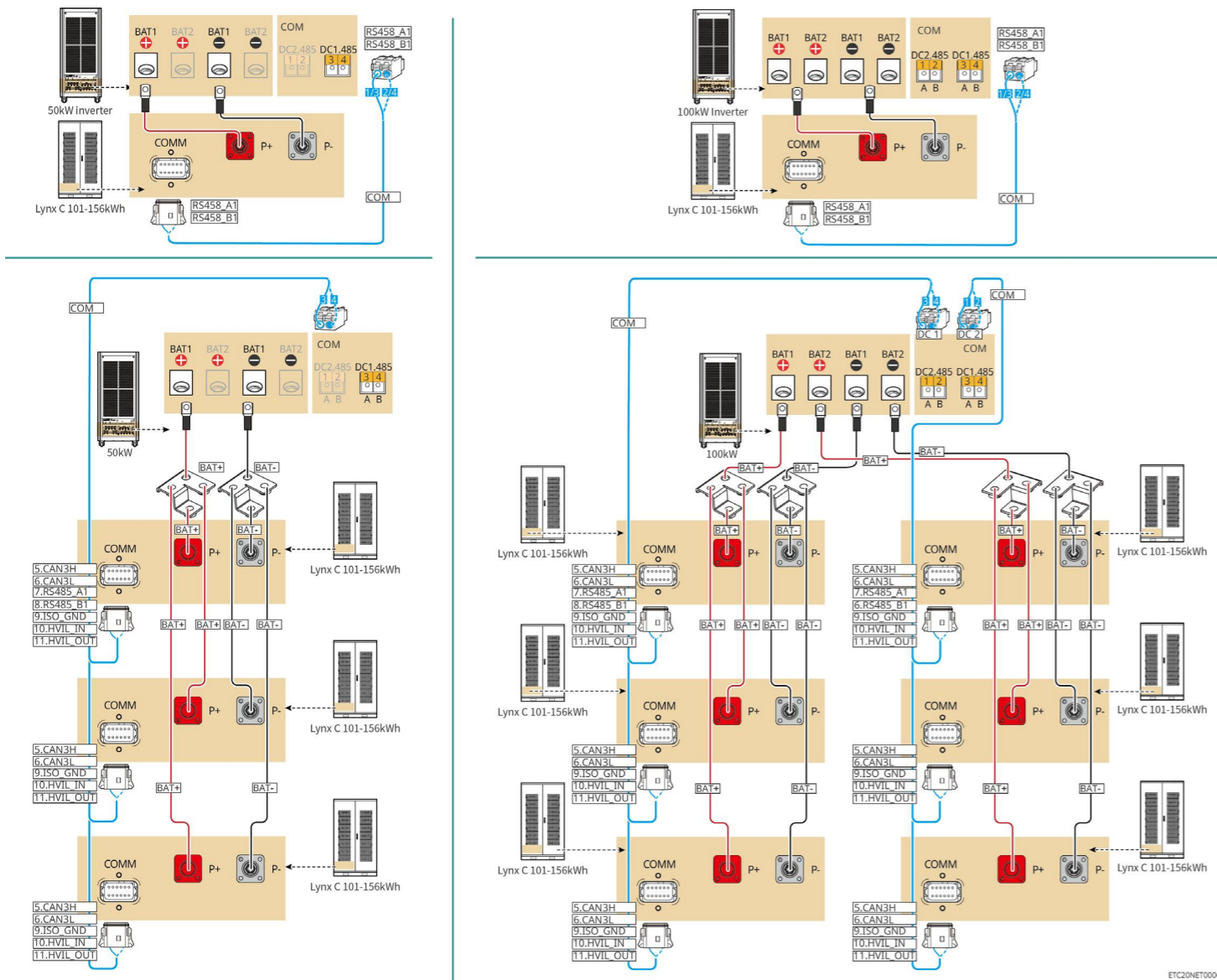








Battery System Wiring Diagram



05 Equipment Commissioning

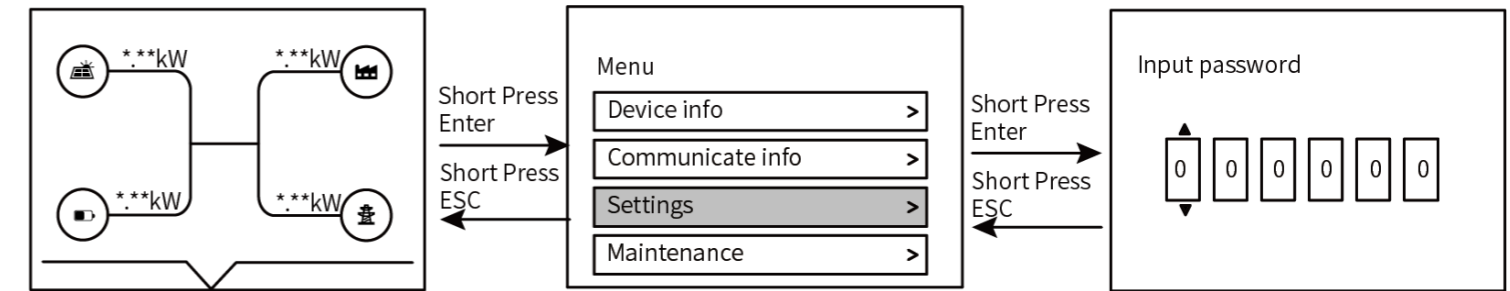
A password is required to access the settings page, contact the after-sales service center to obtain one.

LCD Button Description

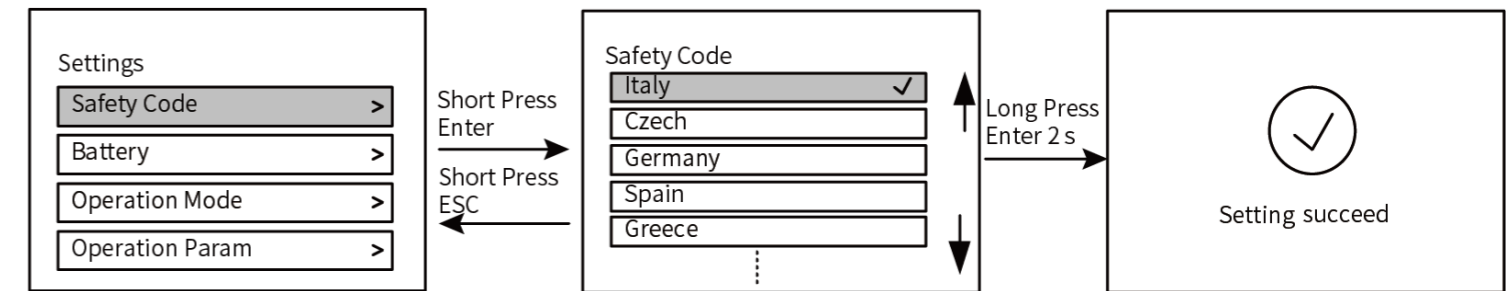


- Short press the direction button: switch to submenus or adjust the parameter values.
- Short press the enter button: go to the next level submenu.
- Long press the enter button: set the parameters after adjusting the values.
- Short press the exit button: back to the upper level menu.

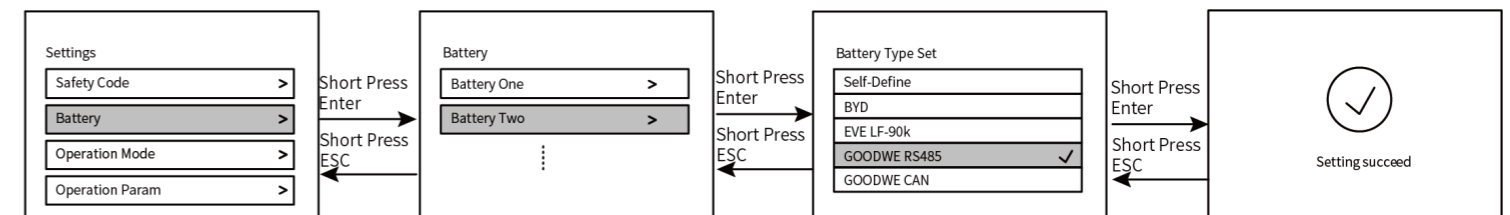
Accessing the Settings Menu



Setting the Safety Code

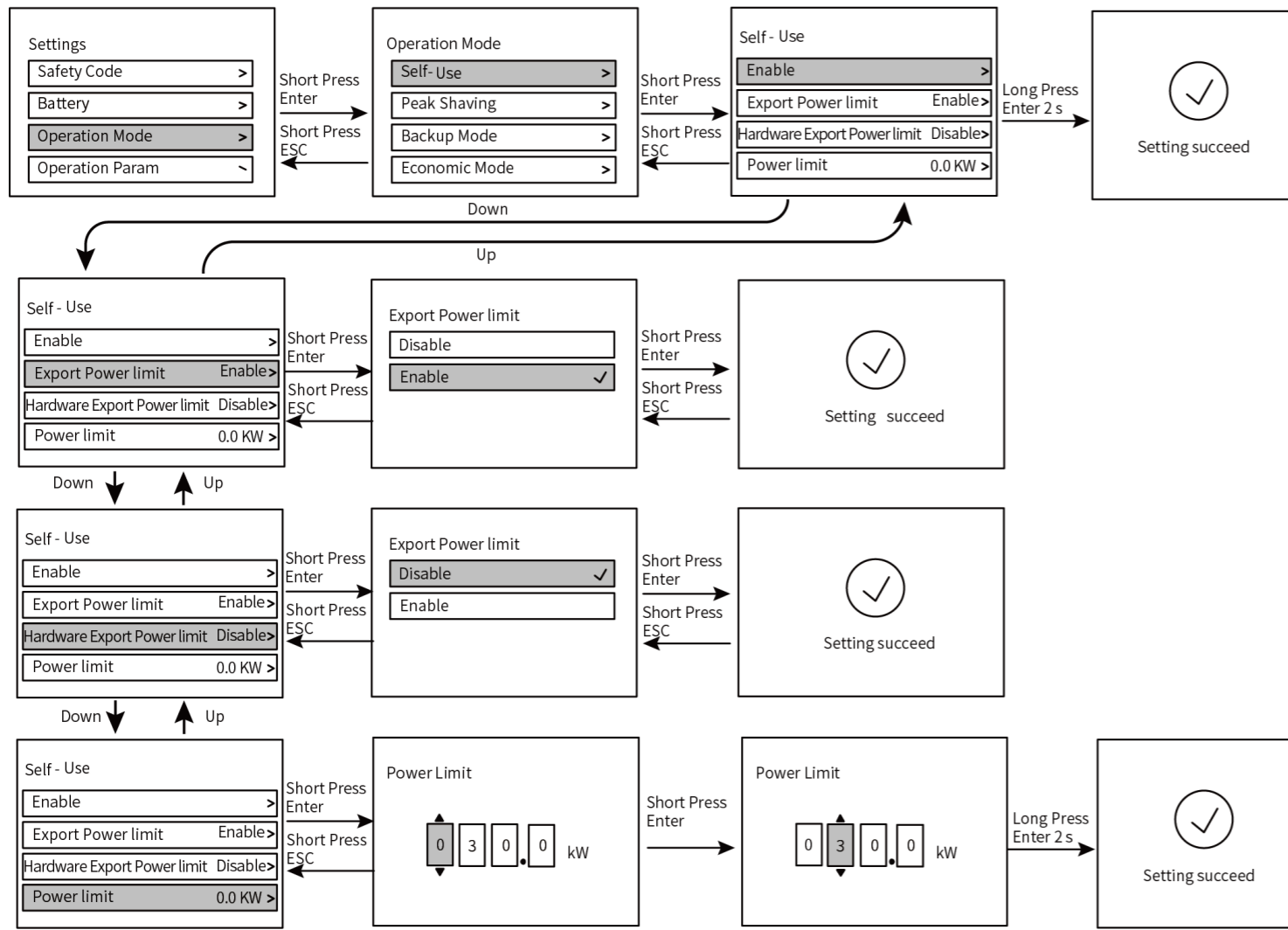


Setting the Battery Type

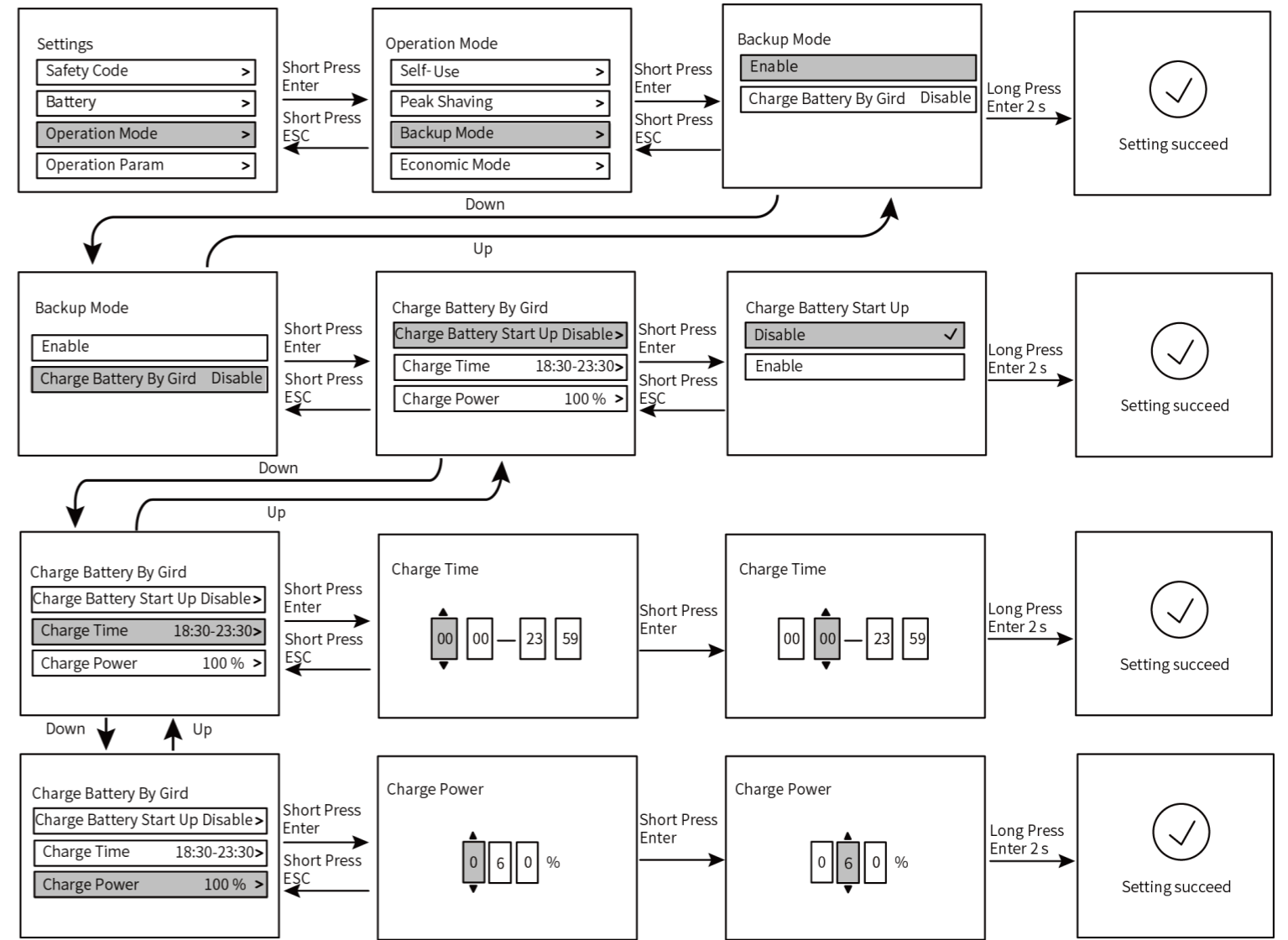


Setting the Working Mode

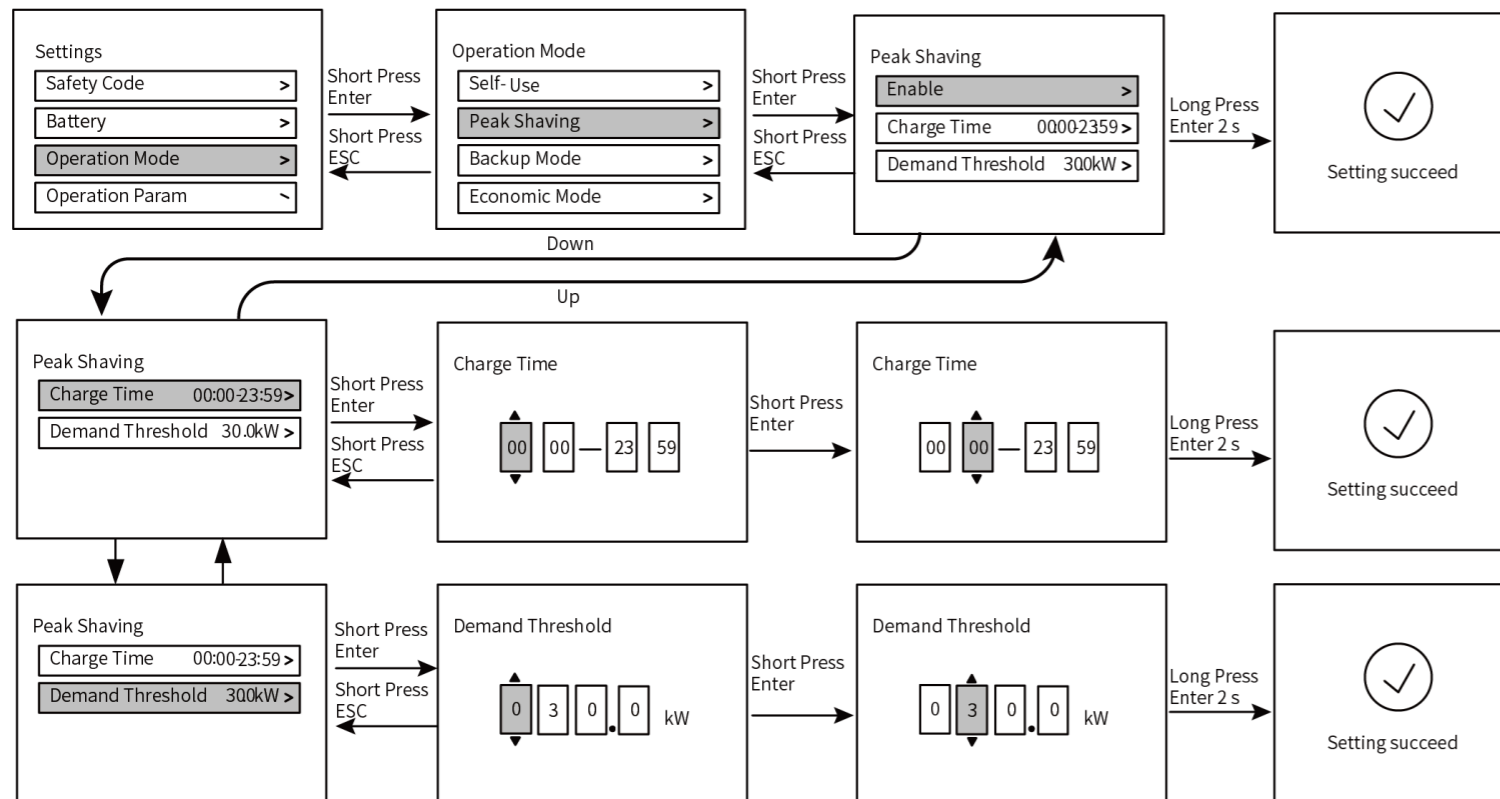
Self-use



Backup Mode



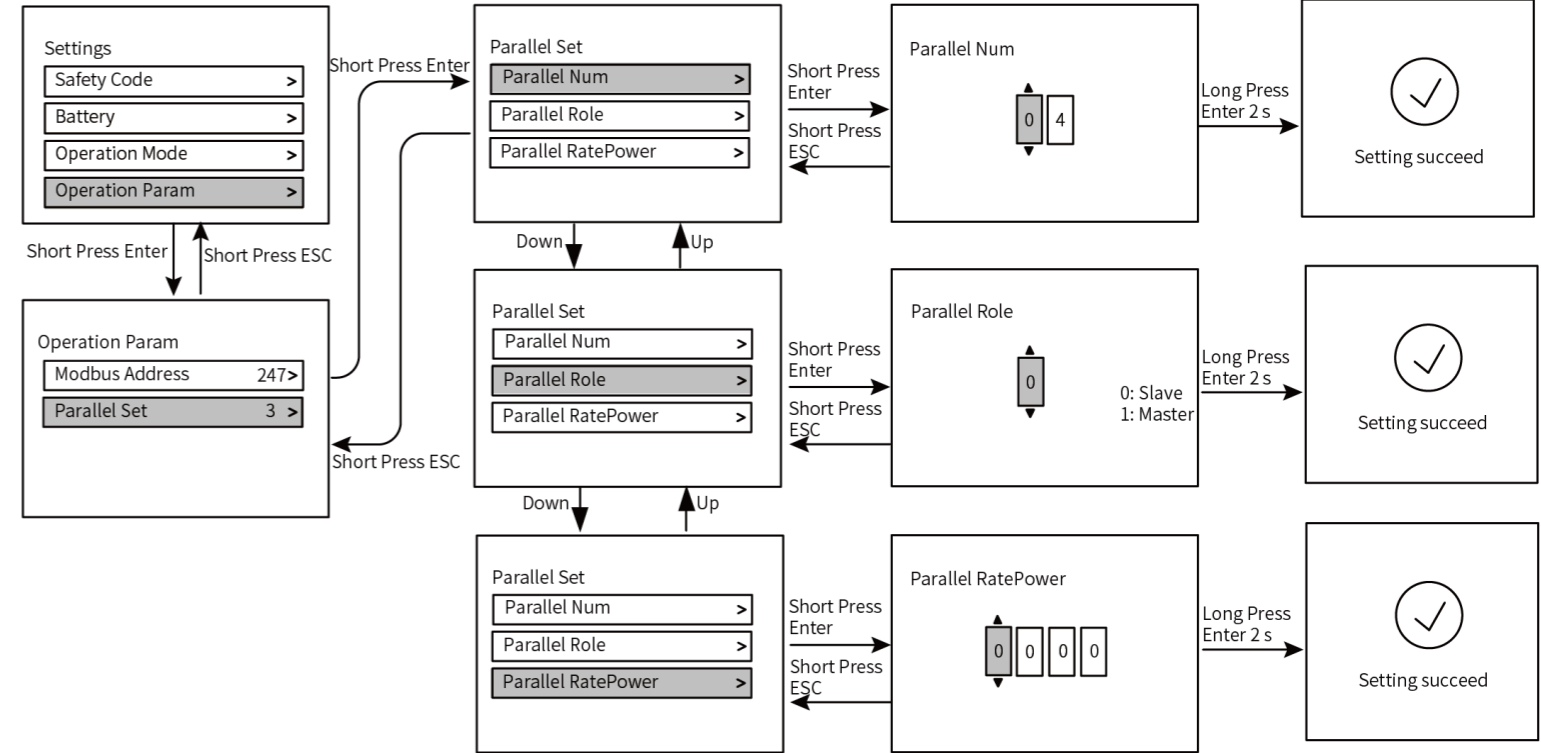
Peak Shaving



Economic Mode

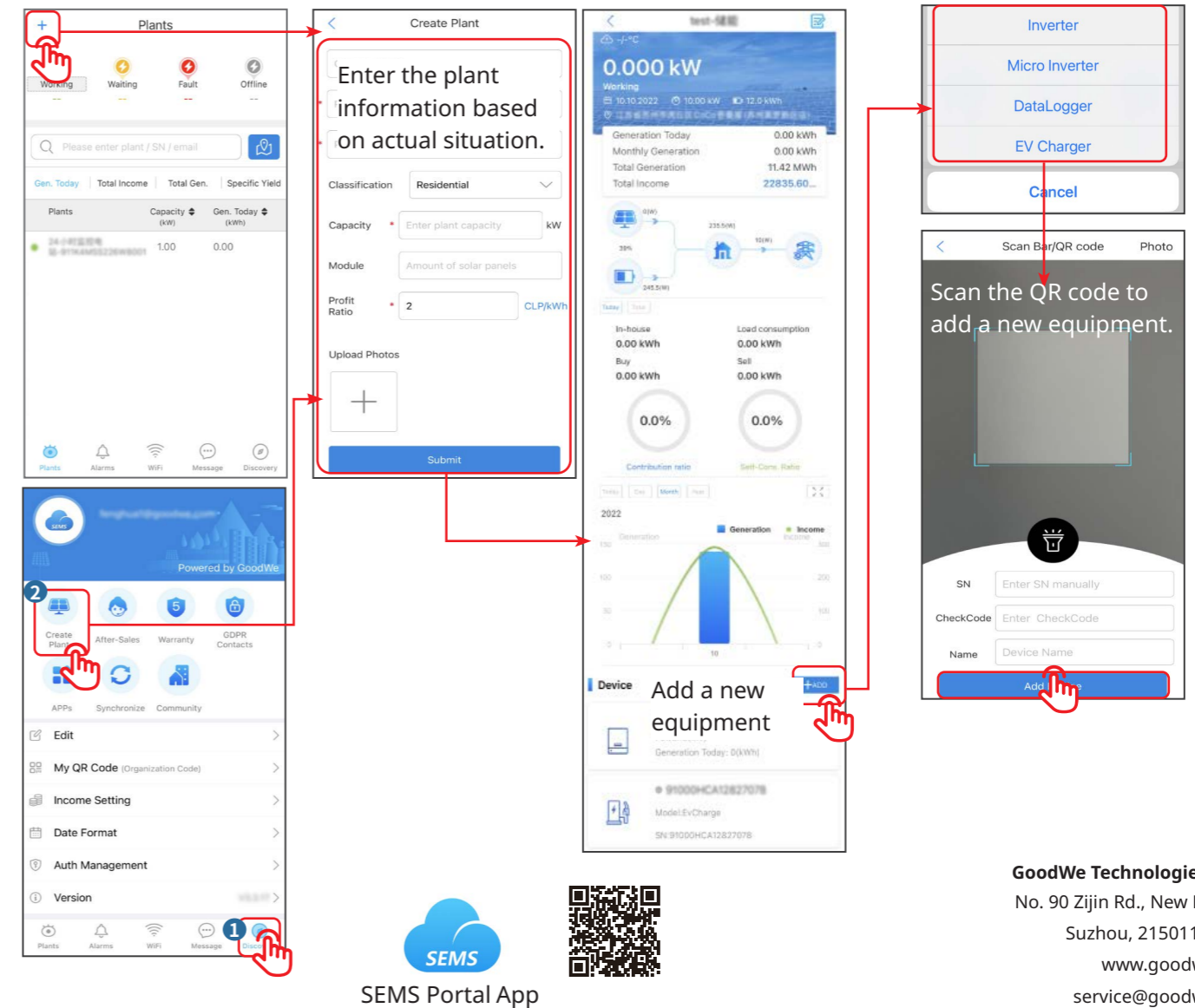


Inverter Paralleling Settings



Creating a Power Plant

Create power plants and add equipments via SEMS Portal app.



Setting the CT Ratio

