

Gourmia



2 SLICE TOASTER

User Manual | GDT2850

TABLE OF CONTENTS

Important Safeguards	4
Get To Know Your Toaster	5
Before First Use.	6
Cleaning & Maintenance	6
Using Your Toaster.	7

Model: GDT2850 | © 2024 Gourmia | 1.1

The Steelstone Group Brooklyn, NY | Gourmia.com

All rights reserved. No portion of this manual may be reproduced by any means whatsoever without written permission from The Steelstone Group, except for the inclusion of quotations in a media review. Although every precaution has been taken in the preparation of this manual, The Steelstone Group assumes no responsibility for errors or omissions. Nor is it made to ensure that the information contained in this manual is complete and accurate. The Steelstone Group is not engaged in rendering professional advice or services to the individual consumer; further, The Steelstone Group shall not be held responsible for any loss or damage allegedly arising from any information or suggestions in this manual.



Congratulations on the purchase of your Toaster from Gourmia!

Here at Gourmia, we're all about helping cooks make easy, healthy, and delicious meals an everyday possibility. We know how fast-paced life is and that sometimes a home-cooked meal doesn't make the top of the priority list, no matter how bad you want it. Our dependable, easy-to-use appliances are here to help you change that. We're giving you the tools to eat better and healthier without spending hours in the kitchen prepping and cooking.

We want you to get the most out of your toaster, which is why our team is available to help with any questions you may have. Whether you have a question with setup or need some guidance on which preset to use, we're happy to walk you through it.

Welcome to the ease of cooking with Gourmia.

This manual provides instructions for all of the toaster's functions and features along with directions for assembling, operating, cleaning, and maintaining the appliance. Please read all safety instructions and directions for safe usage at all times. Keep this manual for future use.

Thank you for choosing Gourmia!

We'd love to hear about the delicious dishes you're creating!
Share your thoughts, recipes, and photos with us.

      @gourmia

IMPORTANT SAFEGUARDS

Read all instructions before using the electric appliance.

1. This appliance is not intended for use by children or persons with reduced physical, sensory, or mental capabilities, or a lack of experience and knowledge, unless they have supervision.
2. DO NOT touch hot surfaces. Use handles or knobs.
3. To prevent electric shock do not immerse cord, plugs, or the base in water.
4. Check if the voltage indicated on the appliance corresponds to the local main voltage before you connect the appliance.
5. Always make sure that the plug is inserted properly into a wall outlet.
6. DO NOT operate any appliance with a damaged cord or plug, after the appliance malfunctions, or if the appliance has been damaged in any manner. Return the appliance to the nearest authorized service center for repair.
7. DO NOT let the cord hang over the edge of the table or counter.
8. NEVER connect this appliance to an external timer switch, separate remote-control system or extension cords.
9. To disconnect, turn off the appliance, then remove the plug from wall outlet.
10. DO NOT place appliance on or near a hot gas, electric burner, or in a heated oven.
11. Leave at least 4 inches of free space on the back and sides of the appliance.
12. DO NOT use the appliance for any other purpose than described in this manual. The use of accessory attachments not recommended by the appliance manufacturer may cause injuries.
13. DO NOT leave the appliance unattended during use.
14. Unplug from outlet when not in use and before cleaning. Allow to cool before putting on or taking off parts, and before cleaning the appliance.
15. DO NOT use outdoors.
16. This appliance is intended for household use only.
17. Save these instructions for future use.
18. If the SUPPLY CORD is damaged, it must be replaced by the manufacturer, its service agent or similarly qualified persons in order to avoid a hazard.

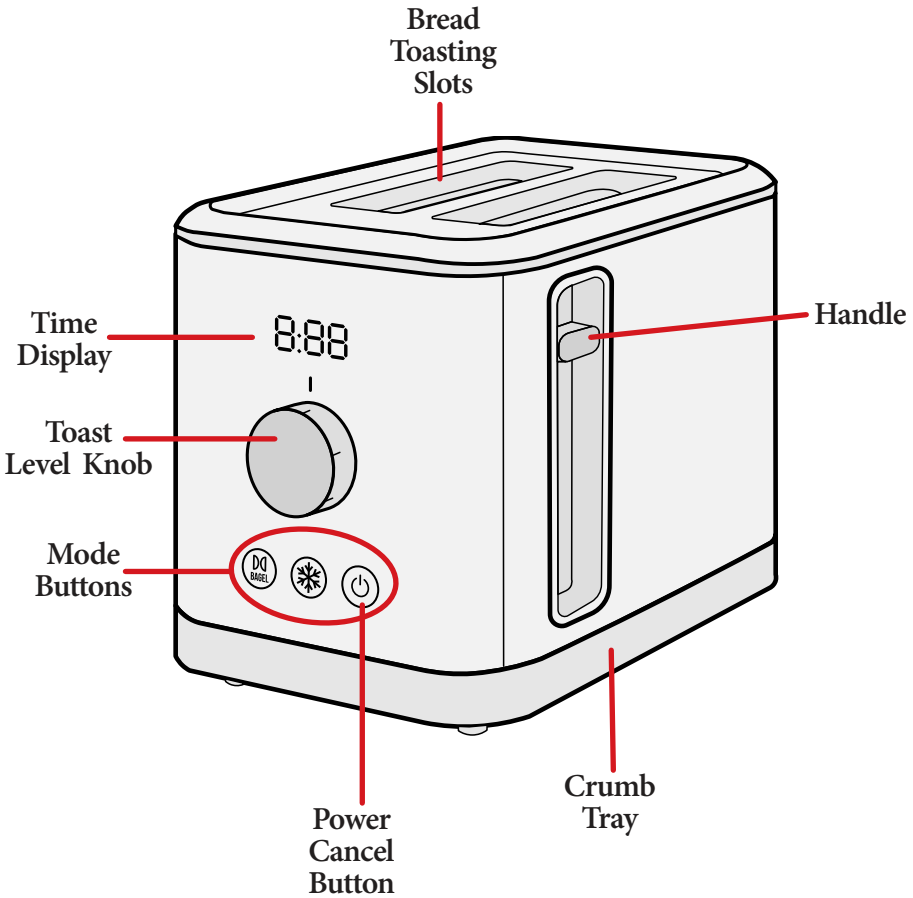
Electrical Polarized Plug

This appliance has a polarized plug (one blade is wider than the other). To reduce the risk of electric shock, the plug is intended to be used by inserting it into the electrical outlet only one way. If the plug does not fit securely into the outlet, reverse the plug and re-insert. If it still does not fit, contact a qualified electrician for assistance. Do not modify the plug in any way.



Power: 120V~ 60Hz 1,700W

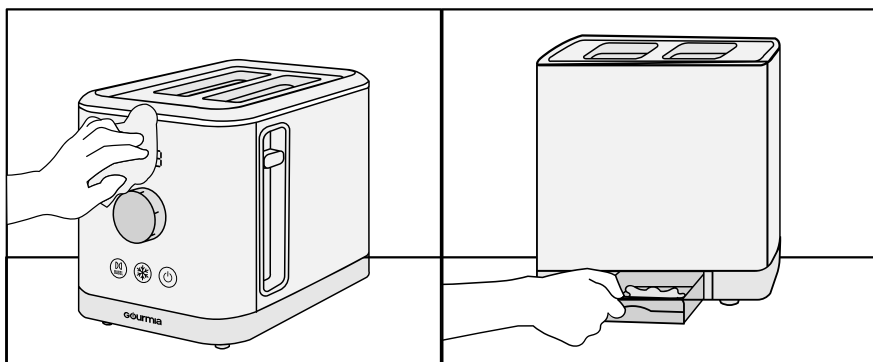
KNOW YOUR TOASTER



BEFORE FIRST USE

1. Remove the stickers, protective foil or plastic from the appliance.
2. Before using your appliance for the first time, wipe off all removable parts with a damp cloth. Never use abrasive products.
3. Place the appliance on a stable and flat surface and plug into wall socket while in use.
4. Avoid toasting the food with extremely oily ingredients such as butter.
5. Never attempt to remove bread from the slots without unplugging the toaster from the electrical outlet first.
6. In order to achieve uniform color we recommend that you should wait minimum 30 seconds between each toasting so that color control can reset automatically.

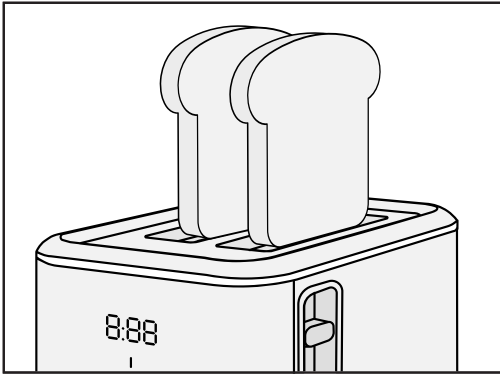
CLEANING & MAINTENANCE



1. After using, unplug the device from the power supply and let it cool down before cleaning.
2. Clean the surface and the base with a wet cloth. Never use metal polish.
3. Pull out crumb tray at the bottom of the toaster and empty it. If toaster is used frequently, accumulated bread crumbs should be removed at least once a week. Make sure the crumb tray is completely closed before using the toaster again.
4. Dry all parts with a dry cloth before storing the appliance. When storing the appliance, wound the power cord under the bottom of the toaster.

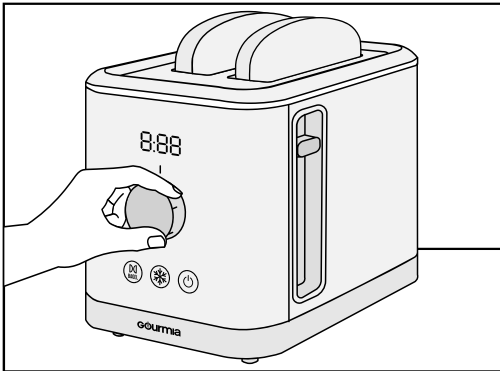
Do not clean the appliance with aggressive chemicals or abrasives in order not to damage the surface.

USING YOUR 2 SLICE TOASTER

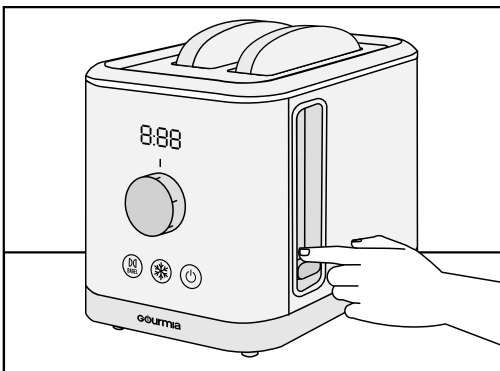


1. Place two bread slices into the bread slots.
2. Irregular sized bread can only be toasted on the toast rack.

Make sure the crumb tray is positioned in place before using.



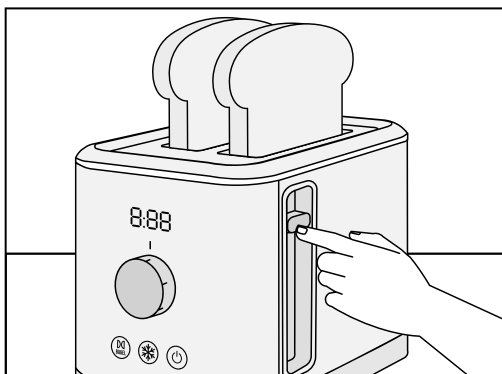
2. Set color control slide key to your desired level of toasting.
3. There are 6 settings; the lowest "1" is for light and the highest "6" is for dark.



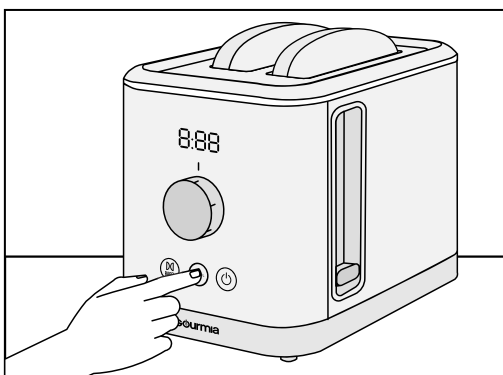
4. Lower the spring handle down until it latches, the "Cancel" button will illuminate and the appliance will begin toasting.

NOTE: The carriage handle can only be latched when the appliance is plugged in.

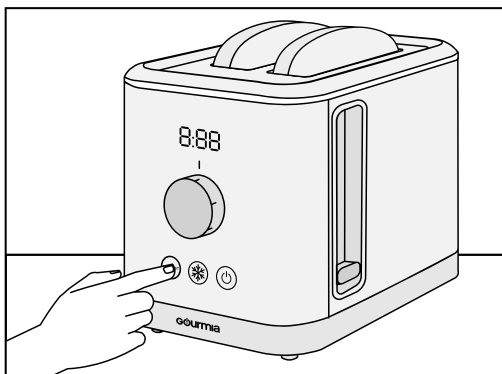
USING YOUR 2 SLICE TOASTER



5. Once the bread has been toasted, the handle will automatically pop up.
6. You can lift the handle a little to remove the bread.



7. To toast frozen bread, first press the “Defrost” button, set the color control knob to your desired color, then lower the handle down until it is latched in place.



8. To warm up cold toasted bread, press the Bagel button, then lower the handle until it is latched in place.

Storage

Store the product carefully in a safe place like a cupboard, shelf, or countertop. Do not knock or drop it as this can damage the product.

Warranty & Services

This Limited Warranty is for one full year from the date of purchase and requires proof of purchase from an authorized seller. It is applicable to the original purchaser only and is not transferable to a third party user. Repair or replacement of defective parts is solely at Gourmia's discretion. In the event that repair isn't possible, Gourmia will replace the product/part. If product repair/replacement won't suffice, Gourmia has the option of refunding the cash value of the product or component returned.

Product defects not covered under the Warranty provisions include normal wear and damage incurred from use or accidental negligence, misuse of instruction specifications or repair by unauthorized parties. Gourmia is not liable for any incidental or consequential damages incurred by such circumstances.

Only valid within the United States.

Register your product at
www.gourmia.com/warranty

For Customer Service, Questions or Comments
gourmia.com • info@gourmia.com • 888.552.0033

Mon-Thu 9:00 a.m. to 6:00 p.m. Et

Fri 9:00 a.m. to 3:00 p.m. Et

Languages: English, Spanish, French

Gourmia

We'd love to hear from you!

888.552.0033

info@gourmia.com