



**GREEN LION**



**Green Lion**

## **2-In-1 Wireless Adapter**

SKU: GN211AWCABK

Model No: GL-CP6

# Table of Contents

Preface	2
A. CarpPlay Function	2
A.1 Summary	2
A.2 Product Diagram	2
A.3 Pairing Instructions	2
A.4 Update System	3
A.5 Notes	4
A.6 FAQ	4
B. Android Auto Function	5
B.1 Summary	5
B.2 Product Diagram	5
B.3 Pairing Instructions	6
B.4 Update System	7
B.5 Notes	7
B.6 FAQ	7
Specifications	8
Disposal	9
Warranty	10
Contact Us	10

## Preface

Thank you for purchasing our product. For optimal performance, please read these instructions carefully before operating your product.

## A. CarPlay Function

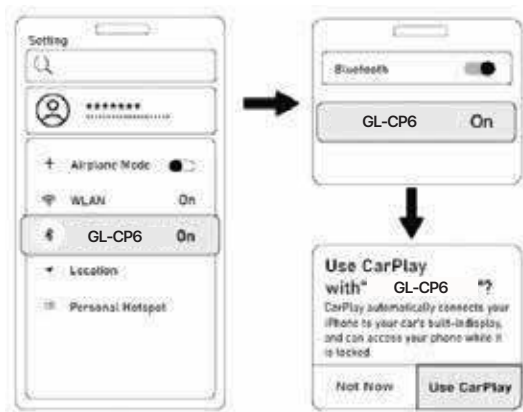
### A.1 Summary

The wireless CarPlay adapter connects wired CarPlay to wireless CarPlay, enabling seamless interconnection between your iPhone and car. You can easily enjoy music, navigation, and other functions wirelessly with plug-and-play convenience while maintaining the original car operations. This interconnection enhances driving pleasure and reduces the frequency of iPhone usage.

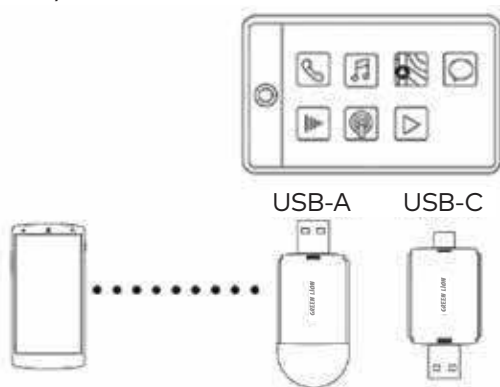
### A.2 Product Diagram

### A.3 Pairing Instructions

1. Connect the product to the multimedia data port of the car using the appropriate data cable.
2. Ensure that Wi-Fi, Bluetooth, and CarPlay are enabled on your iPhone.
3. Open the Bluetooth search page on your iPhone, locate the device named "GL-CP6", and select it to pair and connect successfully.



4. Once paired successfully, you can fully enjoy the enhanced driving experience with wireless CarPlay.



5. After the wireless CarPlay adapter is connected to the device for the first time, it will automatically connect the next time.

## A.4 Update System

1. Connect to your iPhone's Wi-Fi, select the corresponding display name, enter the password "88888888", and click "Connect."

2. In Safari, enter the IP address: 192.168.110.1, then click "Metro upgrade." Wait a few minutes for the upgrade to complete.
3. After the upgrade is complete, unplug the box, ignore the previous Bluetooth connection, and reconnect the Bluetooth for use

## A.5 Notes

1. Compatibility: iPhone 6 and above, iOS 10 and above.
2. Ensure your car is compatible with the factory-installed CarPlay. More than 800 models are available. You can check compatible models here
3. In case the system supports both CarPlay and Android Auto, please note that when using CarPlay, the multimedia should be switched to CarPlay mode while connected to an Apple device. Similarly, when using Android Auto, multimedia should be switched to Android Auto mode while connected to an Android device.

## A.6 FAQ

1. Why doesn't the indicator light of the product turn off automatically when the car is turned off?

This product does not have a battery. The time when the light turns off is determined by the multimedia USB data port, and the duration may vary depending on the car model.

2. Why can't I always connect?

**2.1** Ensure that Wi-Fi, Bluetooth, and CarPlay are all turned on.

**2.2** The car's multimedia system must support wired CarPlay.

**2.3** Check if the product's indicator light is on.

**2.4** Make sure the product is properly connected to the multimedia data interface.

3. Can the product be paired with more than one iPhone?

Yes, you can pair it with multiple iPhones. To switch devices, simply turn off the Bluetooth and Wi-Fi on the currently connected iPhone.

#### 4. Why doesn't it reconnect automatically?

The product can only connect to the last paired device. Make sure the Wi-Fi and Bluetooth are still enabled on that device.

#### 5. No sound during a call?

Go to the iPhone's call screen and select CarPlay as the audio output mode. Some vehicles may require manual adjustment.

#### 6. Sound or navigation delay?

Music and navigation rely on the iPhone's data connection. If the iPhone's signal is unstable, delays in sound and navigation may occur.

#### 7. Why does the connection suddenly disconnect?

The product's data cable has a limitation function. Disconnection may occur if the cable is loosely connected to the car's data port.

#### 8. Why can't CarPlay start or why is the device showing as incompatible or unrecognized USB?

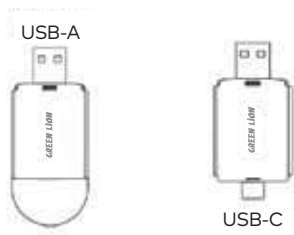
Try unplugging the device and restarting the multimedia system.

## B. Android Auto Function

### B.1 Summary

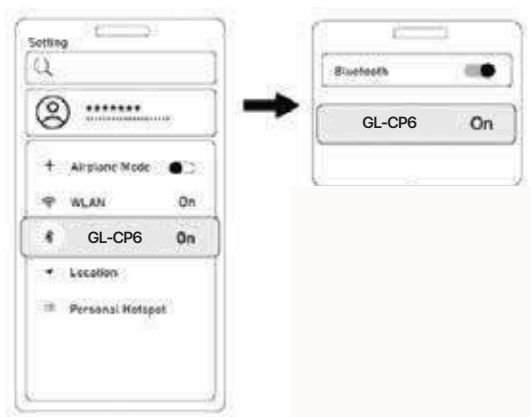
Wireless Smart Car Adapter connects wired Android Auto to wireless Android Auto realizing the interconnection between phones and car. You can easily enjoy music, navigation and other functions wirelessly. This interconnection provides drivers with more driving pleasure and reduces the frequency of phones use. We are committed to providing our customers with a safer.

### B.2 Product Diagram

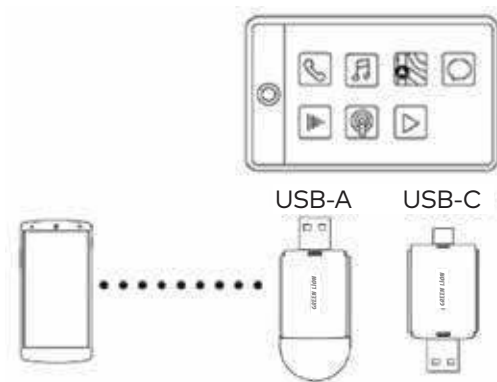


## B.3 Pairing Instructions

1. Connect the product to the car's multimedia data port using the respective data cables.
2. Enable Wi-Fi and Bluetooth on your mobile device.
3. Open the Bluetooth settings on your phone, search for the Bluetooth display name GL-CP6 and click on the pairing option to connect successfully.



4. Once paired successfully, you can enjoy the convenience of wireless Android Auto during your drive



5. When the product is connected to the in-vehicle device for the first time, it will automatically reconnect on subsequent uses.

## B.4 Update System

1. Connect the Android Smartbox to the vehicle, turn off the Bluetooth and Wi-Fi switches on your mobile phone, then turn on the Wi-Fi switch. Find the Wi-Fi name, enter the password "88888888," open Google Chrome, and enter the IP address 192.168.1.101 in the address bar. Click Switch P2P and toggle P2P to "Open!"

2. Open the mobile phone's Wi-Fi settings and connect to the display name of the box. Open Google Chrome, enter the IP address 192.168.1.101, and click "Update" to start the process. Once completed, unplug the device and re-pair it successfully so that it can be used normally.

3. After the update is complete, plug and unplug the box again, ignore the previous Bluetooth connection, and reconnect the Bluetooth for use.

## B.5 Notes

1. Compatibility: Android phone, Google Mobile Android 11 and above.

2. The original car must support Android Auto functionality.

3. Multimedia with CarPlay and Auto functions: When connecting to the CarPlay function, the multimedia needs to be switched to the CarPlay mode and connected using an Apple phone. When connecting to the Auto function, the multimedia needs to be switched to Android Auto mode and connected using an Android phone.

## B.6 FAQ

1. Why doesn't the indicator light of the product turn off automatically when the car is turned off?

This product does not have a battery. The exact time the lights go out is determined by the multimedia USB data port, and the light-off time is different for each car.

**2.** Why can't I always connect?

**2.1** Turn on the Wi-Fi and Bluetooth at the same time.

**2.2** In-car multimedia must support Android Auto.

**2.3** Ensure the product indicator light is on.

**2.4** Ensure the product is connected to the multimedia data interface.

**3.** Can the product be paired with more than one cell phone?

Yes, but if you want to change the cell phone, you need to turn off the Bluetooth and Wi-Fi functions of the previously used cell phone.

**4.** Can't it reconnect automatically?

The product can only connect to the last paired device, and you cannot turn off the Wi-Fi and Bluetooth switches.

**5.** I can't hear anything when I make a call?

In the call page, you need to select the sound output as Android Auto mode. Some cars need to connect the cell phone to the car's Bluetooth.

**6.** Sound delay or navigation delay?

Playing music and navigation use cell phone traffic. If the cell phone signal is not stable, these problems may occur.

**7.** Why is the connection suddenly disconnected?

**A:** The product data line has a limiting function, and the disconnection is caused by a loose connection in the car data port and the data line.

**8.** Why can't AndroidAuto start or the device be incompatible/unrecognized USB?

**A:** Please re-plug the device and restart the multimedia system.

## Specifications

Model No	GL-CP6
Chipset	Allwinner V821

Material	ABS
Input Power	5V/1A
Interface	USB-C, USB-A
Compatibility	CarPlay (iOS 10 and later), Android Auto (Android 11 and later)
Bluetooth	V5.2
Product Weight	11g
Product Dimensions	11*28*58.7mm

## Disposal

This product must not be disposed of as unsorted household waste. It is important to separate such waste for proper treatment and recycling, in compliance with local waste management regulations.



## **Warranty**

Products that you buy directly from our **Green Lion** website or shop come with a 24-month warranty.

When you buy **Green Lion** products from any of our approved sellers, you only get a 12-month warranty. If you want to extend this warranty, go to our website at <https://www.greenlion.net/warranty> and fill out the form with your information. Don't forget to upload a picture of the product too. After we've checked and accepted your request, we'll send you an email to confirm that your product's warranty has been extended.

For more info, please check:  
<https://www.greenlion.net/warranty>

## **Contact Us**

If you have any questions about this Privacy Policy, please contact us at:

Website: <https://www.greenlion.net/>

Sales: [sales@greenlion.net](mailto:sales@greenlion.net)

Service Support: [Support@greenlion.net](mailto:Support@greenlion.net)

Telegram: [@greenlion\\_global](https://www.instagram.com/greenlion_global)

Instagram: [@greenlion\\_global](https://www.instagram.com/greenlion_global)