

GREENPAN™

13-IN-1 MULTI COOKER AIR FRYER GRILL



USER GUIDE

IMPORTANT SAFEGUARDS

When using an electrical appliances, basic safety precautions should always be followed, including the following:

1. Remove and discard cover fitted on the power plug of this appliance.
2. This appliance is not intended for use by persons (including children) with reduced physical, sensory or mental capabilities, or lack of experience and knowledge, unless they have been given supervision or instruction concerning use of the appliance by a person responsible for their safety.
3. This appliance is intended only to be used in household applications.
4. Ensure the surface is level, clean and dry. DO NOT place the appliance near the edge of a countertop during operation. ALWAYS ensure the appliance is properly assembled before use.
5. When using this appliance, provide at least 6 inches(15.25cm) of space above and on all sides for air circulation.
6. ALWAYS use protective hot pads or insulated oven mitts and use available handles and knobs.
7. Do not place anything on top of the appliance.
8. Do not use the appliance for any purpose other than described in this manual.
9. Do not leave the unit unattended when in operation.
10. A fire may occur if Multi Cooker Air Fryer Grill is covered or touching flammable material, including curtains, draperies, walls, and the like, when in operation.
11. Unplug from outlet when not in use and before cleaning. Allow to cool before putting on or taking off parts.
12. Do not immerse the housing in water or rinse under the tap due to the electrical and heating components.
13. Oversize food, metal foil, or utensils must not be inserted in air fryer as this may cause a fire or electric shock.
14. During hot air frying, hot steam is released through the air outlets. Keep your hands and face at a safe distance from the steam and from the air outlets. Also be careful of hot steam and air when you remove the pan from the appliance.
15. Keep all cords away from hot surfaces.
16. Do not let any unauthorized person replace or fix a damaged part such as main cord.
17. Make sure that your output voltage corresponds the voltage stated on the rating label of the appliance.
18. Do not connect appliance to an external controller such as external timer switch.
19. Do not put plastic dishes, protection film or those non-resistant to high temperature into the fryer.
20. Do not plug in the appliance or operate the control panel with wet hands.
21. During use, do not touch the inner pot edge, outer casing, or the surface of the upper cover to avoid burns.
22. Misuse can cause potential injury
23. Always attach plug to appliance first, then plug cord into the wall outlet. To disconnect, press stop, remove plug from wall and let cool.
24. The glass lid has been specially treated to be stronger, more durable and safer than ordinary glass, however it is not unbreakable. If struck hard it may break, weaken, and could eventually shatter at a later time into small pieces without any apparent cause.
25. Extreme caution must be used when the appliance contains hot food, hot oils and liquids.
26. Avoid sudden temperature changes. Do not place frozen or very cold foods into the removable cooking bowl when it is hot. Do not place removable cooking bowl when hot into cold water.
27. Avoid scalding from escaping steam when removing the glass lid from the removable cooking bowl when hot by carefully lifting the lid angled away from yourself.
28. Do not allow water from the lid to drip into the metal housing, only into the removable cooking bowl.
29. Never operate the Multi Cooker Air Fryer Grill without food or liquid in the removable cooking pot.
30. NEVER use an extension cord. A short power-supply cord is used to reduce the risk of children grabbing the cord of becoming entangled and to reduce the risk of people tripping over a longer cord.

31. To protect against electrical shock, NEVER immerse cord, plugs, or main unit housing in water or other liquid.
32. NEVER use the appliance if there is damage to the power cord or plug. Regularly inspect the appliance and power cord. If the appliance malfunctions or has been damaged in any way, immediately stop use and call Customer Service.
33. NEVER use outlet below countertop surface.
34. NEVER place appliance and let cord hang over edges of tables, counters or touch hot surfaces.
35. Only use recommended accessories included with this appliance. The use of accessories or attachments not recommended may cause a risk of fire or injury.
36. Before placing any accessory into the Multi Cooker Air Fryer Grill, ensure they are clean and dry.
37. NEVER use the appliance without the removable cooking pot.
38. ALWAYS ensure lid is fully closed before operating.
39. NEVER move the appliance when in use.
40. NEVER cover the air intake vent or air outlet vent while unit is operating. Doing so will prevent even cooking and may damage the unit or cause it to overheat.
41. NEVER touch hot surfaces. Appliance surfaces are hot during and after operation.
42. NEVER touch accessories during or immediately after cooking. The accessory becomes extremely hot during the cooking process. Avoid physical contact while removing the accessory from the appliance.
43. To prevent burns or personal injury, NEVER use this appliance for deep-frying.
44. Should a grease fire occur or the unit emits black smoke, unplug immediately. Wait for smoking to stop before removing any cooking accessories.
45. To disconnect, turn unit to "off", then unplug from socket when not in use and before cleaning.

46. NEVER clean with metal scouring pads.
47. The use of accessory attachments not recommended by the appliance manufacture as may cause injuries.
48. Do not place on or near a hot gas or electric burner, or in a heated oven.

SHORT CORD INSTRUCTIONS

A short power supply cord is provided to reduce the hazards resulting from becoming entangled in or tripping over a longer cord.

- Longer extension cords are available and may be used if care is exercised in their use.
- If an extension cord is used:
 - The marked electrical rating of the extension cord should be at least as great as the electrical rating of the appliance.
 - The longer cord should be arranged so that it does not drape over the countertop or tabletop where it can be pulled by children or tripped over unintentionally.

GROUNDING INSTRUCTIONS

This appliance must be grounded while in use to protect the operator from electrical shock. The appliance is equipped with a 3-conductor cord and a 3-prong grounding-type plug to fit the proper grounding-type receptacle.

SAVE THESE INSTRUCTIONS FOR HOUSEHOLD USE ONLY

HEALTHY COOKING STARTS WITH GREENPAN

Since inventing healthy ceramic nonstick in 2007, we've dedicated ourselves to unique advances that make cooking better for everyone. From healthy ceramic nonstick cookware to revolutionary home appliances, our groundbreaking designs deliver remarkable performance so you can focus on the flavor. Enjoy!

CONTENTS

- 05 Description of Parts**
- 05 Multi Cooker Functions**
- 08 Air Fryer/Grill Functions**
- 10 Quick Tips**
- 10 Storage**
- 11 Troubleshooting**
- 11 Warranty**

PARTS

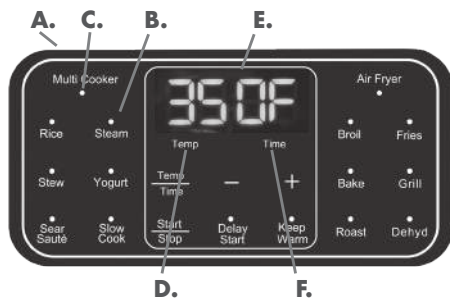
- A. Top Handle
- B. Air Fryer and Grill Lid
- C. Cooking Pot
- D. Control Panel
- E. Pot Handle
- F. Base
- G. Nonstick Airfry Basket
- H. Steam/Roast Rack
- I. Glass Lid
- J. Grill Plate



MULTI COOKER FUNCTION

When using the Multi Cooker function, only the bottom heating plate (120V 1250W) is functioning.

Control Panel



- A. Multi cooker function panel
- B. Indication light of each function
- C. Indication light of multi cooker
- D. Indication light of temperature
- E. Display
- F. Indication light of timer

Buttons

1. Start/stop: press to start or stop cooking.
2. Temp/time: press to select time and temperature.
3. Delay start: Press to delay start cooking.
4. "-" "+" : press to decrease or increase time or temperature.
5. Keep warm: press to keep food warm.

Operation

1. Plug in.
 2. Place the removable pot insert into the chamber and close with glass lid.
- Attention: please do not use the Air Fryer and Grill Lid when using the multi cooker function
3. Select/Press the desired function.
 4. Press "temp/time" button to select time and temperature. Adjust time and temperature by pressing "+" or "-" button.
 5. Press "start/stop" button to start/stop cooking.
 6. While preheating or cooking, you may press "start/stop" to stop cooking, remove lid to check on or flip the food.

Then close the lid and press "start/stop" button to continue cooking.

Note: Use the glass lid with the below functions.

| Function | Default | Temp. Range | Time Range | Keep Warm | Delay Start |
|-------------|-------------------------------|---------------|------------------------------------|-------------|-------------|
| Rice | -- : -- | N/A | N/A | Default 2h | Y |
| Steam | 00:15 | N/A | 00:01–02:00 | Default 2h | Y |
| Stew | 02:00 | N/A | 00:15–04:00 | Default 10h | Y |
| Yogurt | Step 1: HEAt Step 2: 08:00 | N/A | Step 1: N/A Step 2: 03:00–24:00 | N/A | N |
| Sear/Sauté | 390°F, 00:30 | 250°F - 430°F | 00:05–01:00 | N/A | N |
| Slow Cook | 04:00 | N/A | 00:30–24:00 | Default 10h | Y |
| Keep Warm | 10:00 | N/A | 01:00–10:00 | - | Y |
| Delay Start | 01:00 | N/A | 01:00–24:00 | - | - |

Note: When in standby mode ("OFF" appears on display).

To change between Celsius and Fahrenheit, press "Temp/Time" button for 5 seconds.

During cooking, press "start/stop" button for 3 seconds to stop cooking and enter standby mode ("OFF" appears on display). You can now select another function

OPERATION OF EACH FUNCTION

Rice

1. Place the removable pot into the chamber and cover with glass lid
2. Select Rice function and time display "----" appears.
3. Press the Start/Stop button and the appliance will beep. Timer will count down on display when remaining time is 10 minutes.
4. When cooking time is finished, the machine will beep and enter into Keep Warm for 2 hours, then enter into standby mode and "OFF" will appear on display.

Steam

Place the steam rack into the removable pot in the appliance and cover with glass lid.

1. Select the Steam function and default time appears on display; Select time by pressing "temp/time" button, adjust time by pressing "+" or "-" button.
2. Press the Start/Stop button. The appliance will beep and start preheating. "PrE" appears on the display. When preheating finishes, the appliance starts counting down.

3. When cooking time has finished, the appliance beeps and enters "Keep Warm" mode for 2 hours, then enters into standby mode and "OFF" appears on display.

NOTE: Water should not exceed 1.5L / 1.5qts

Stew

1. Place the removable pot in the appliance and cover with glass lid.
2. Select the Stew function and default time appears on the display, select time by pressing "temp/time" button and adjust time by pressing "+" or "-" button.
3. Press the Start/Stop button, the appliance will beep and preheating begins. "PrE" appears on display; when preheating finishes, the appliance starts counting down.
4. When cooking time finishes, the appliance beeps and enters "Keep Warm" mode for 10 hours, after which it enters standby mode and "OFF" appears on display.

Yogurt

1. Place the removable pot in the chamber and cover with glass lid.
2. Select the Yogurt function and "HEAt" appears on display.
3. Press the Start/Stop button and the machine will begin sterilization, heating to 180°F.
4. When temperature reaches 180°F, "HEAt" flashes on display and the unit beeps.

At this moment, the milk temperature is very high and the milk should be cooled before yogurt, probiotics or lactic acid bacteria is added.

5. Press "start/stop" button, default time 08:00 appear on display, then adjust time by pressing "+" or "-" button. Press "start/stop" button to start counting down.

Display counts down as it enters the yogurt fermentation state.

6. When cooking time finishes, the appliance will beep and enter standby mode, "OFF" appears on display.

NOTE: If you're using fresh milk and no sterilization is needed, you can press "Yogurt" twice to skip the "HEAT" stage and enter directly into the Yogurt fermentation stage and set the required time.

Sear/Sauté

1. Place the removable pot into the chamber.
2. Select the Sear/Sauté function and the default temperature will appear on display.
3. Select time and temperature by pressing "temp/time" button, then adjust time and temperature by pressing the "+" or "-" button.
4. Press the Start/Stop button, appliance will beep and start preheating. "PrE" appears on the display. When preheating finishes, it starts counting down.
5. When cooking time finishes, the appliance will beep, then enters standby mode and "OFF" appears on display.

NOTE: This function does not require glass lid.

Slow Cook

1. Place the removable pot into the chamber and cover with glass lid.
2. Select the "Slow Cook" function and default time will appear on the display.
3. Select time by pressing "temp/time" button; Adjust time by pressing the "+" or "-" button.
4. Press the Start/Stop button and the appliance will beep and start counting down.
5. Once cooking time finishes, the appliance will beep and enter "Keep Warm" mode for 10 hours, after which it will enter standby mode and "OFF" appears on display.

Keep Warm

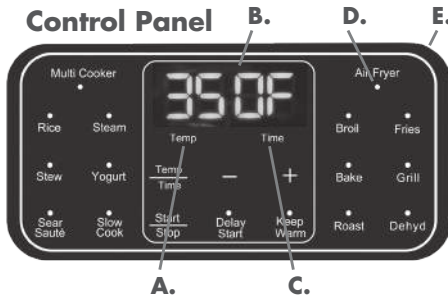
1. Select the "Keep Warm" function and default time appears on display, adjust the time by pressing the "+" or "-" button.
2. Press the Start/Stop button and the appliance beeps and begins to start counting down. When time finishes, the appliance beeps and enters standby mode, "OFF" appears on display.

Delay Start

1. After setting time and temperature of desired function (multi cooker), press "Delay Start" button, time is flashing on display (indication light of Delay Start remains on).
2. Press "+" or "-" to adjust the time. Then press "Start/Stop" button to start counting down. When time finishes and the appliance beeps, the setting function will start cooking.

AIR FRYER FUNCTION

When using the Air Fryer and Grill modes, only the top heating (120V 1330W) functions.



- A.** Indication light of temperature
- B.** Display
- C.** Time indication light
- D.** Air fry indication light
- E.** Air fryer function panel

Button

1. Start/stop: press to start or stop cooking.
2. Temp/time: press to select time and temperature.
3. “-”/“+”: press to increase or decrease time & temperature.

Note: The “Keep Warm” and “Delay Start” functions are disabled when using the air fryer function/Air Fryer and Grill Lid.

Operation

1. Plug in.
2. Place the removable pot in the chamber, then put on the Air Fryer and Grill Lid.
3. Select the desired function by pressing the corresponding button.
4. Press “temp/time” button to select time and temperature, then adjust the desired time and temperature by pressing the “+” or “-” button.
5. Press “start/stop” button to start cooking.
6. During preheating or cooking you may remove the Air Fryer and Grill Lid to check or flip food.
7. Unlock and remove the lid, “Lid” appears on display.

8. Press time/temp button to select time and temperature, then adjust the desired time and temperature by pressing “+/-”.
9. Once desired time and temperature is displayed, lock the Air Fryer and Grill Lid back into place and cooking will resume in 2 seconds (no need to press any buttons)
10. Time and temperature will be appear on display

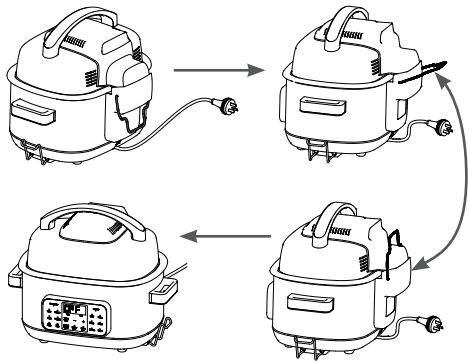
Note: While in standby mode (“OFF” appears on display), you may press “Temp/Time” button for 5 seconds to change between Celsius and Fahrenheit.

During cooking, you may press “start/stop” button for 3 seconds to stop cooking and enter into standby mode (“OFF” appears on display). At this time, you may select another function.

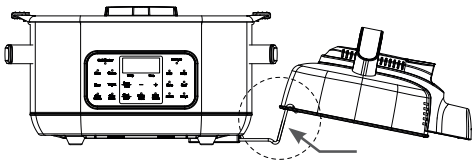
Air Fryer and Grill Lid Assembly

When using the air fryer function, place the Air Fryer and Grill Lid on the pot, pull up the latch tightly, detailed in below picture.

When indication light of air fryer illuminates, air fryer is on.



During or after cooking, remove Air Fryer and Grill Lid and place on rack as below picture, to avoid damage to table.



Time and Temperature of Air Fryer Function

| Function | Default | Temp. Range | Time Range | Delay Start |
|----------|-------------|-------------|-------------|----------------------|
| Broil | 00:10 | - | 00:10–01:00 | Basket or roast rack |
| Fries | 390°F 00:20 | 300-390°F | 00:01–00:30 | Basket |
| Bake | 350°F 01:00 | 250-430°F | 00:10–02:00 | Basket or roast rack |
| Grill | 430°F 00:15 | 250-430°F | 00:01–00:30 | Grill plate |
| Roast | 390°F 00:45 | 250-430°F | 00:10–01:00 | Basket or roast rack |
| Dehyd | 150°F 02:00 | 105-195°F | 00:15–24:00 | Basket or roast rack |

Broil

1. Place food on the roast rack and place it in the removable pot.
2. Cover with the Air Fryer and Grill Lid and pull up the wire rack.
3. Select the Broil function and default time will appear on display.
4. Select time by pressing “temp/time” button, adjust time by pressing the “+” or “-” button.
5. Press the Start/Stop button, then the appliance beeps and starts preheating. “PrE” appears on display. When preheating finishes, the appliance starts counting down.
6. When cooking time finishes, the appliance beeps and “donE” appears on display for 2 minutes before it enters into standby mode (“OFF” appears on display).

Fries

1. Place the fries in the basket and place the basket in the removable pot.
2. Cover with the Air Fryer and Grill Lid and pull up the latch.
3. Select the Fries function and default temperature appears on display.
4. Select time and temperature by pressing “temp/time” button, adjust time and temperature by pressing the “+” or “-” button.
5. Press the Start/Stop button. Once start button is pressed appliance will beep and preheating begins. “PrE” appears on display. When preheating finishes, the timer starts counting down.
6. When cooking time finishes, the appliance beeps and “donE” appears on display for 2 minutes before it enters into standby mode (“OFF” appears on display).

Bake

1. Place the food on the roast rack or in basket and place it into the removable pot.
2. Cover with the Air Fryer and Grill Lid and pull up the latch.
3. Select Bake function and the default temperature appears on display.
4. Select time and temperature by pressing “temp/time” button, adjust time and temperature by pressing the “+” or “-” button.
5. Press the Start/Stop button, appliance will beep and preheating starts. “PrE” appears on the display; when preheating finishes, the appliance starts counting down.
6. When cooking time finishes, the appliance beeps and “donE” appears on display for 2 minutes before it enters into standby mode (“OFF” appears on display).

Grill

Place the grill plate into the removable pot in the appliance and cover with Air Fryer and Grill Lid. Pull up Latch to lock Lid in place. See diagram on page 8.

1. Select the Grill function and default temperature appears on display. Select temperature and time by pressing “temp/time” button, adjust temperature and time by pressing “+” or “-” button.
2. Press the Start/Stop button, the appliance will beep and start preheating. “PrE” appears on the display. When preheating has finished, the appliance starts counting down, open the Air Fryer and Grill Lid and place the food on the grill plate, then close the lid, the appliance will resume cooking automatically.
3. When cooking time finishes, the appliance beeps and “donE” appears on display for 2 minutes before it enters into standby mode (“OFF” will appear on display).

Roast

1. Place the roast on the roast rack and place into removable pot.
2. Cover with the Air Fryer and Grill Lid and pull up the latch.
3. Select "Roast" function and default temperature will appear on display.
4. Select time and temperature by pressing "temp/time" button, adjust time and temperature by pressing the "+" or "-" button.
5. Press the Start/Stop button, when the appliance beeps, preheating begins. "PrE" appears on the display. When preheating finishes, the appliance starts to count down.
6. When cooking time finishes, the appliance beeps and "doneE" appears on display for 2 minutes before it enters into standby mode ("OFF" appears on display).

Dehydrator

1. Place the food on roast rack and place the roast rack into the removable pot.
2. Cover with the air fryer and grill lid and pull up the latch.
3. Select the "Dehyd" function and the default temperature will appear on the display.
4. Select time and temperature by pressing "temp/time" button, adjust time and temperature by pressing the "+" or "-" button.
5. Press the Start/Stop button, the appliance will beep and time will start to count down.
6. When cooking time finishes, the appliance beeps and "donE" appears on display for 2 minutes before it enters into standby mode ("OFF" appears on display).

Cooking time of food

| Food | Temperature | Time |
|-------------------------|-------------|-----------|
| Steak (1 inch) | 400°F | 13-15 min |
| Salmon (2 filets) | 350°F | 8-10 min |
| Bacon (3-4 slice) | 350° | 6-8 min |
| Chicken wings (400g) | 400°F | 18-20 min |
| French fries (350-400g) | 400°F | 18-20 min |

QUICK TIPS

Clean & Care:

Before cleaning, always unplug your Multi-Cooker Air Fryer Grill and allow to cool. The removable pot, glass lid, rack, basket and grill plate are all dishwasher safe.

Wipe the outside of the Multi Cooker Air Fryer Grill base and Air Fryer and Grill Lid. Never immerse in water.

Do not immerse the appliance, cord or plug in water and make sure water does not enter into the appliance

| Part | Dishwasher/ Hand Wash | Wipe with Damp Cloth |
|-------------------------------|-----------------------|----------------------|
| Multi-Cooker/ Air Fryer Grill | | ✓ |
| Air Fryer and Grill Lid | | ✓ |
| Air Fryer Basket | ✓ | |
| Removable Pot | ✓ | |
| Glass Lid | ✓ | |
| Roast/Steam Rack | ✓ | |
| Grill Plate | ✓ | |

STORAGE

Ensure the Multi Cooker Air Fryer Grill is cool and dry before storing. Secure power cord with twist tie.

BEFORE RETURNING YOUR GREENPAN PRODUCT

If you are experiencing problems with your GreenPan Product, please call GreenPan customer service at 914-372-7777 before returning the product. A representative can confirm whether the product is under warranty and advise on next steps.

TROUBLESHOOTING

In the event the unit stops working and indicates an error with a beep and an error code in the LED display, refer to the following table.

| Error Code | Solution |
|--------------------------------------|---|
| E1 | Contact Customer Service |
| E2 | Contact Customer Service |
| E4 | Contact Customer Service |
| E5 | Contact Customer Service |
| Unit does not turn on | Check whether the power plug is connected to a functional, grounded electrical outlet |
| Air Fryer and Grill does not operate | Check whether Air Fryer and Grill Lid is securely fastened with Latch on back of unit |

*If problem continues contact customer service



This marking indicates that this appliance should not be disposed with other house-hold wastes. To prevent possible harm to the environment or human health from uncontrolled waste disposal, recycle it responsibly to promote the sustainable reuse of material resources.

LIMITED WARRANTY

GreenPan Electrics are covered by a limited warranty against defects in materials and workmanship, beginning on the date of purchase and lasting for two years. If your GreenPan Electrics product has a defect during the warranty period, The Cookware Company (USA), LLC will either repair or replace the product. Further information on the warranty claim process, exclusions from warranty coverage, and other terms can be found in the complete limited warranty for this product, available online at greenpan.us/warranty.

TERMS OF SALE; ARBITRATION

The terms on which The Cookware Company (USA), LLC sells GreenPan Electrics are available online at greenpan.us/pages/terms-of-sale (the "Terms"). The Terms contain very important information regarding your rights and obligations, as well as conditions, limitations, and exclusions that may apply to you. Please read them carefully.

In particular, the Terms provide that, by your purchase of this product, you and The Cookware Company (USA), LLC are agreeing to give up any rights to litigate in a court or before a jury, or to participate in a class action or representative action with respect to a claim. Other rights that you would have if you went to court may also be unavailable or limited in arbitration. Any claim, dispute, or controversy between you and The Cookware Company (USA), LLC arising from or relating in any way to your purchase of products or services will be resolved exclusively and finally by binding arbitration.

The arbitration will be administered by the American Arbitration Association ("AAA") in accordance with the Consumer Arbitration Rules (the "AAA Rules") then in effect, except as modified hereby. (The AAA Rules are available at adr.org or by calling the AAA at 1-800-778-7879.) The Federal Arbitration Act will govern the interpretation and enforcement of this arbitration and waiver provision.

The Cookware Company (USA), LLC will be responsible for the AAA filing fee of any such proceeding. Other than your right to pursue a claim in small claims court, as described in the Terms, the arbitrator will have exclusive authority to resolve any dispute relating to arbitrability and/or enforceability of this arbitration provision, including any unconscionability challenge or any other challenge that the arbitration provision or these Terms are void, voidable or otherwise invalid. The arbitrator will be empowered to grant whatever relief would be available in court under law or in equity. Any award of the arbitrator(s) will be final and binding on each of the parties and may be entered as a judgment in any court of competent jurisdiction. Attorney fee shifting in this case is governed by the Terms. You agree to an arbitration on an individual basis. In any dispute, NEITHER YOU NOR THE COOKWARE COMPANY (USA), LLC WILL BE ENTITLED TO JOIN OR CONSOLIDATE CLAIMS BY OR AGAINST OTHER CUSTOMERS IN COURT OR IN ARBITRATION OR OTHERWISE PARTICIPATE IN ANY CLAIM AS A CLASS REPRESENTATIVE, CLASS MEMBER OR IN A PRIVATE ATTORNEY GENERAL CAPACITY. The arbitral tribunal may not consolidate more than one person's claims and may not otherwise preside over any form of a representative or class proceeding. The arbitral tribunal has no power to consider the enforceability of this class arbitration waiver and any challenge to the class arbitration waiver may only be raised in a court of competent jurisdiction.

If any provision of the arbitration agreement described herein and in the Terms is found unenforceable, the unenforceable provision will be severed and the remaining arbitration terms will be enforced.

GREENPAN™

140021517