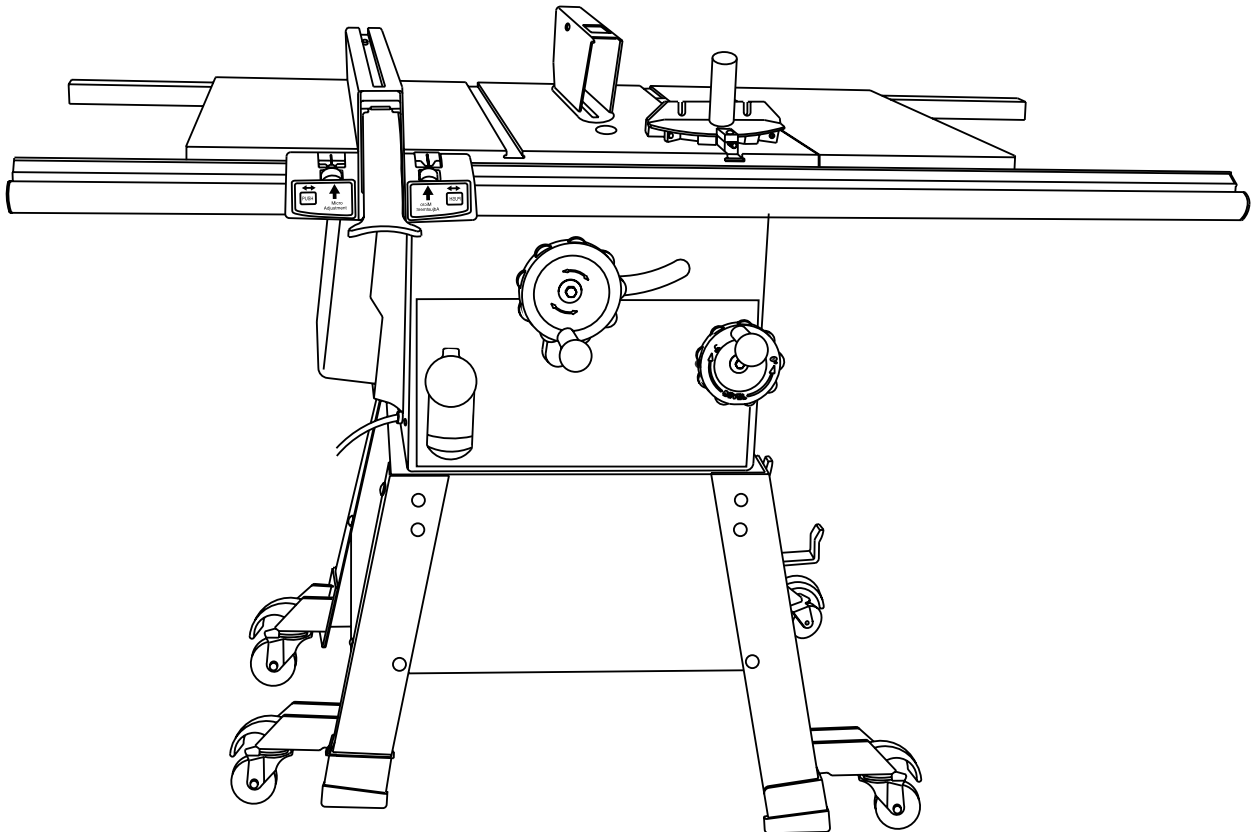


HITACHI

Model

C 10FL

Stationary Table Saw



INSTRUCTION MANUAL AND SAFETY INSTRUCTIONS

⚠ WARNING

Improper and unsafe use of this power tool can result in death or serious bodily injury!
This manual contains important information about product safety. Please read and understand this manual before operating the power tool. Please keep this manual available for others before they use the power tool.

Hitachi Koki

CONTENTS

SECTION	PAGE	SECTION	PAGE
Product Specifications	3	Know Your Stationary Table Saw	10
Power Tool Safety	4	Glossary of Terms	11
Table Saw Safety	5	Assembly and Adjustments	12
Electrical Requirements and Safety	6	Operation	19
Accessories and Attachments	7	Maintenance	23
Tools Needed For Assembly	7	Troubleshooting Guide	25
Carton Contents	8	Push Stick Pattern	26
		Parts List	28

HITACHI AUTHORIZED SERVICE CENTERS

Service under this warranty is available from Hitachi Koki U.S.A., Ltd. at :

IN THE U.S.A.

3950 Steve Reynolds Blvd. Norcross, GA 30093

9409 Owensmouth Ave. Chatsworth, CA 91311

OR CALL: (800) 546-1666 for a service center nearest you.

IN CANADA

6395 Kestrel Road Mississauga ON L5T 1Z5

OR CALL: (800) 970-2299 for a service center nearest you.

WARNING

Some dust created by power sanding, sawing, grinding, drilling and other construction activities contains chemicals known to the state of California to cause cancer, birth defects or other reproductive harm. Some examples of these chemicals are:

- Lead from lead-based paints
- Crystalline silica from bricks, cement and other masonry products
- Arsenic and chromium from chemically treated lumber

Your risk from these exposures varies, depending on how often you do this type of work. To reduce your exposure to these chemicals, work in a well-ventilated area and work with approved safety equipment such as dust masks that are specially designed to filter out microscopic particles.

PRODUCT SPECIFICATIONS

MOTOR

HP (Maximum developed) **3.0**
Type **Induction**
Amps **15 / 7.5**
Voltage 120 / 240
Hz **60**
RPM (no load) **3450**
Overload Protection **YES**

SAW

Table Size **27-1/8" x 20-1/8"**
Table Extensions **Left & Right**
Extension Fence Capacity **24" Left & Right**
Blade Size **10"**
Rip Scale **YES**
Rip Fence **YES**
Miter Gauge **YES**
Maximum Cut Depth @ 90° **3-3/8"**
Maximum Cut Depth @ 45° **2-1/4"**
Maximum Dado Cut Width **13/16"**
Net Weight **264.5 LBS**

WARNING

To avoid electrical hazards, fire hazards or damage to the table saw, use proper circuit protection.

This table saw is wired at the factory for 110-120/220-240 Volt operation. It must be connected to a 110-120 Volt / 15 Ampere or 220-240 Volt / 7.5 Ampere time delay fuse or circuit breaker. To avoid shock or fire, replace power cord immediately if it is worn, cut or damaged in any way.

Before using your table saw, it is critical that you read and understand these safety rules. Failure to follow these rules could result in serious injury to you or damage to the table saw.

POWER TOOL SAFETY

WARNING

Before using your table saw, it is critical that you read and understand these safety rules. Failure to follow these rules could result in serious injury or damage to the table saw.

Good safety practices are a combination of common sense, staying alert and understanding how to use your power tool. To avoid mistakes that could cause serious injury, do not plug in your power tool until you have read and understood the following safety rules:


1. READ and become familiar with this entire Operator's Manual. LEARN the tool's applications, limitations and possible hazards.
2.  **WARNING**
Look for this symbol that identifies important safety precautions. It means CAUTION! BECOME ALERT! YOUR SAFETY IS INVOLVED!
3. **NEVER OPERATE THIS MACHINE WITHOUT THE SAFETY GUARD IN PLACE FOR ALL THROUGH SAWING OPERATIONS.**
4. DO NOT USE IN A DANGEROUS ENVIRONMENT such as damp or wet locations or exposure to rain. Keep work area well lighted.
5. DO NOT use power tools in the presence of flammable liquids or gases.
6. KEEP WORK AREA CLEAN. Cluttered areas and benches invite accidents.
7. KEEP CHILDREN AWAY. All visitors should be kept at a safe distance from the work area.
8. DO NOT FORCE THE TOOL. It will do the job better and safer at the rate for which it was designed.
9. USE THE RIGHT TOOL. Don't force the tool or attachment to do a job for which it is not designed.
10. WEAR PROPER APPAREL. DO NOT wear loose clothing, gloves, neckties, rings, bracelets or other jewelry that may get caught in moving parts. Non-slip footwear is recommended. Wear protective hair covering to contain long hair.
11. WEAR A FACE MASK OR DUST MASK. Sawing, cutting and sanding operations produce dust.
12. DISCONNECT TOOLS before servicing and when changing accessories such as blades, cutters, etc.
13. REDUCE THE RISK OF UNINTENTIONAL STARTING. Make sure the switch is in the OFF position before plugging into the power supply.
14. USE ONLY RECOMMENDED ACCESSORIES. Consult the Operator's Manual for recommended accessories. The use of improper accessories may cause injury to you or damage to the tool.
15. REMOVE ADJUSTING KEYS AND WRENCHES. Form the habit of checking to see that keys and adjusting wrenches are removed from the tool before turning ON.
16. NEVER LEAVE TOOL RUNNING UNATTENDED. TURN THE POWER "OFF". Do not leave the tool before it comes to a complete stop.
17. NEVER STAND ON TOOL. Serious injury could occur if the tool is tipped or if the cutting tool is unintentionally contacted.
18. DO NOT OVERREACH. Keep proper footing and balance at all times.
19. MAINTAIN TOOLS WITH CARE. Keep tools sharp and clean for most efficient and safest performance. Follow instructions for lubricating and changing accessories.
20. CHECK FOR DAMAGED OR LOOSE PARTS. Before further use of the tool, a guard or other part that is damaged should be carefully checked to ensure it will operate properly and perform its intended function. Check for alignment of moving parts, loose binding of moving parts, mounting and any other conditions that may affect its safe operation. A guard or other part that is loose or damaged should be properly adjusted repaired or replaced.
21. MAKE WORKSHOP CHILD PROOF with padlocks, master switches or by removing starter keys.
22. DO NOT operate the tool if you are under the influence of any drugs, alcohol or medication that could impair your ability to use the tool safely.
23. USE DUST COLLECTION SYSTEM wherever possible. Dust generated from certain materials can be hazardous to your health and in some cases, a fire hazard. Always operate the power tool in a well-ventilated area with adequate dust removal.
24. ALWAYS WEAR EYE PROTECTION. Any power tool can throw foreign objects into your eyes that could cause permanent eye damage. ALWAYS wear safety goggles (not glasses) that comply with ANSI safety standard Z87.1. Everyday glasses have only impact resistant lenses. They ARE NOT safety glasses. **NOTE:** Glasses or goggles not in compliance with ANSI Z87.1 could cause serious injury when they break.
25. DIRECTION OF FEED. Feed work into a blade or cutter against the direction of rotation of the blade or cutter only.

TABLE SAW SAFETY

1. ALWAYS USE SAW BLADE GUARD, splitter and anti-kickback pawls for every operation for which they can be used, including through sawing. Through sawing operations are those in which the blade cuts completely through the workpiece when ripping or crosscutting.
2. ALWAYS HOLD WORK FIRMLY against the miter gauge or rip fence.
3. USE A PUSH STICK when required. Always use a push stick especially when ripping narrow stock. Refer to ripping instructions in this Operator's Manual where the push stick is covered in detail. A pattern for making your own push stick is included on page 26.
4. **NEVER PERFORM ANY OPERATION "FREE HAND", which means using only your hands to support or guide the workpiece. Always use either the fence or the miter gauge to position and guide the work.**

WARNING: FREEHAND CUTTING IS THE MAJOR CAUSE OF KICK-BACK & FINGER/HAND AMPUTATIONS.
5. NEVER STAND or have any part of your body in line with the path of the saw blade. Keep your hands out of the saw blade path.
6. NEVER REACH behind or over the cutting tool for any reason.
7. REMOVE the rip fence when crosscutting.
8. DO NOT USE a molding head with this saw.
9. FEED WORK INTO THE BLADE against the direction of rotation only.
10. NEVER use the rip fence as a cut-off gauge when crosscutting.
11. NEVER ATTEMPT TO FREE A STALLED SAW BLADE without first turning the saw OFF. Turn power switch OFF immediately to prevent motor damage.
12. PROVIDE ADEQUATE SUPPORT to the rear and the sides of the saw table for long or wide workpieces.
13. AVOID KICKBACKS (work thrown back towards you) by keeping the blade sharp, the rip fence parallel to the saw blade and by keeping the splitter, anti-kickback pawls and guards in place, aligned and functioning. Do not release work before it has passed all the way past the saw blade. Do not rip work that is twisted, warped or does not have a straight edge to guide it along the fence.
14. AVOID AWKWARD OPERATIONS and hand positions where a sudden slip could cause your hand to move into the saw blade.
15. NEVER USE SOLVENTS to clean plastic parts. Solvents could possibly dissolve or otherwise damage the material. Only a soft damp cloth should be used to clean plastic parts.
16. MOUNT your table saw on a bench or stand before performing any cutting operations. Refer to ASSEMBLY AND ADJUSTMENTS on page 12.
17. NEVER CUT METALS or materials which may make hazardous dust.
18. ALWAYS USE IN WELL-VENTILATED AREA. Remove sawdust frequently. Clean out sawdust from the interior of the saw to prevent a potential fire hazard. Attach a vacuum to the dust port for additional sawdust removal.
19. NEVER LEAVE THE SAW running unattended. Do not leave the saw until it comes to a complete stop.
20. For proper operation follow the instructions in this Operator's Manual entitled ASSEMBLY AND ADJUSTMENTS (Page 12). Failure to provide sawdust fall-through and removal hole will allow sawdust to build up in the motor area resulting in a fire hazard and potential motor damage.

ELECTRICAL REQUIREMENTS AND SAFETY

POWER SUPPLY REQUIREMENTS

⚠ WARNING

To avoid electrical hazards, fire hazards or damage to the table saw, use proper circuit protection. Always use a separate electrical circuit for your tools. This power tool is wired at the factory for 120V operation. Connect it to a 120V, 15 Amp circuit and use a 15 Amp time delay fuse or circuit breaker. To avoid shock or fire, replace the cord immediately if it is worn, cut or damaged in any way.

EXTENSION CORD REQUIREMENTS

⚠ WARNING

Any extension cord must be GROUNDED for safe operation.

MINIMUM GAUGE FOR EXTENSION CORDS (AWG type / 120 Volt only)					
Ampere Rating		Total length in feet			
More Than	Not More Than	25'	50'	100'	150'
		AWG			
0	6	18	16	16	14
6	10	18	16	14	12
10	12	16	16	14	12
12	16	14	12	Not Applicable	

GUIDELINES FOR EXTENSION CORDS

Any extension cord used for power tools MUST be grounded (3-wire with two flat prongs and one round ground prong).

Make sure the extension cord is in good condition. When using an extension cord, make sure you use one heavy enough to carry the current the tool will draw. An undersized cord will cause a drop in line voltage resulting in loss of power and overheating. The table above shows the correct size to use according to extension cord length and nameplate ampere rating. If in doubt, use the next heavier gauge cord. The smaller the gauge number the heavier the cord.

NOTE: The 12 to 16 Amp rating is correct for this tool. It is highlighted in the table above.

Be sure your extension cord is properly wired and in good condition. Always replace a damaged extension cord or have it repaired by a qualified person before using it. Protect your extension cords from sharp objects, excessive heat and damp or wet areas.

Before connecting the saw to the extension cord, make sure the saw switch is turned OFF.

GROUNDING INSTRUCTIONS

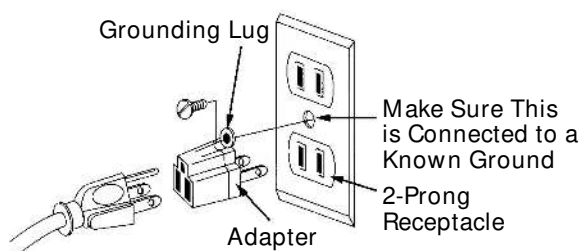
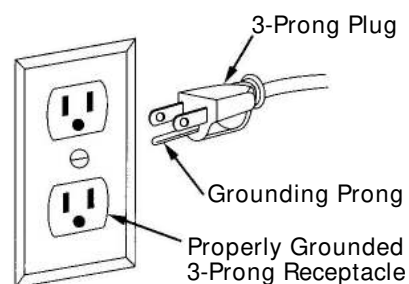
IN THE EVENT OF A MALFUNCTION OR BREAKDOWN, grounding provides a path of least resistance for electric current and reduces the risk of electric shock. This saw is equipped with an electric cord that has an equipment grounding conductor and a grounding plug. The plug MUST be plugged into a matching receptacle that is properly installed and grounded in accordance with ALL local codes and ordinances.

DO NOT MODIFY THE PLUG PROVIDED. If it will not fit the receptacle, have the proper receptacle installed by a qualified electrician.

IMPROPER CONNECTION of the equipment grounding conductor can result in risk of electric shock. The conductor (wire) with the green insulation (with or without yellow stripes) is the equipment grounding conductor. If repair or replacement of the electric cord or plug is necessary, DO NOT connect the equipment grounding conductor to a live terminal.

CHECK with a qualified electrician or service personnel if you do not completely understand the grounding instructions, or if you are not sure the saw is properly grounded.

Use only 3-wire extension cords that have 3-prong grounding plugs and 3-pole grounding receptacles that accept the saw's plug. Repair or replace damaged or worn cords immediately.



ACCESSORIES AND ATTACHMENTS

RECOMMENDED ACCESSORIES

WARNING

Visit your Hardware Department or see the Power and Hand Tools Catalog to purchase recommended accessories for this power tool.

WARNING

To avoid the risk of personal injury:

Do not use a dado with a diameter larger than 8".
Maximum dado width is 13/16". **DO NOT USE WIDER COMBINATIONS.**

Do not use molding head set with this saw.

Do not modify this power tool or use accessories not recommended by Store.

TOOLS NEEDED FOR ASSEMBLY

TOOLS NEEDED



Medium screwdriver



#2 Philips screwdriver



Straight edge



4mm Hex wrench



17mm Hex wrench



Adjustable wrench



Combination square



5mm Hex wrench

CARTON CONTENTS

UNPACKING AND CHECKING CONTENTS

WARNING

Separate all parts from packing materials. Check each part with the illustration on the next page and the "Table of Loose Parts" to make certain all items are accounted for, before discarding any packing material.

WARNING

If any part is missing or damaged, do not attempt to assemble the table saw, plug in the power cord, or turn the switch ON until the missing or damaged part is obtained and is installed correctly.

TABLE OF LOOSE PARTS

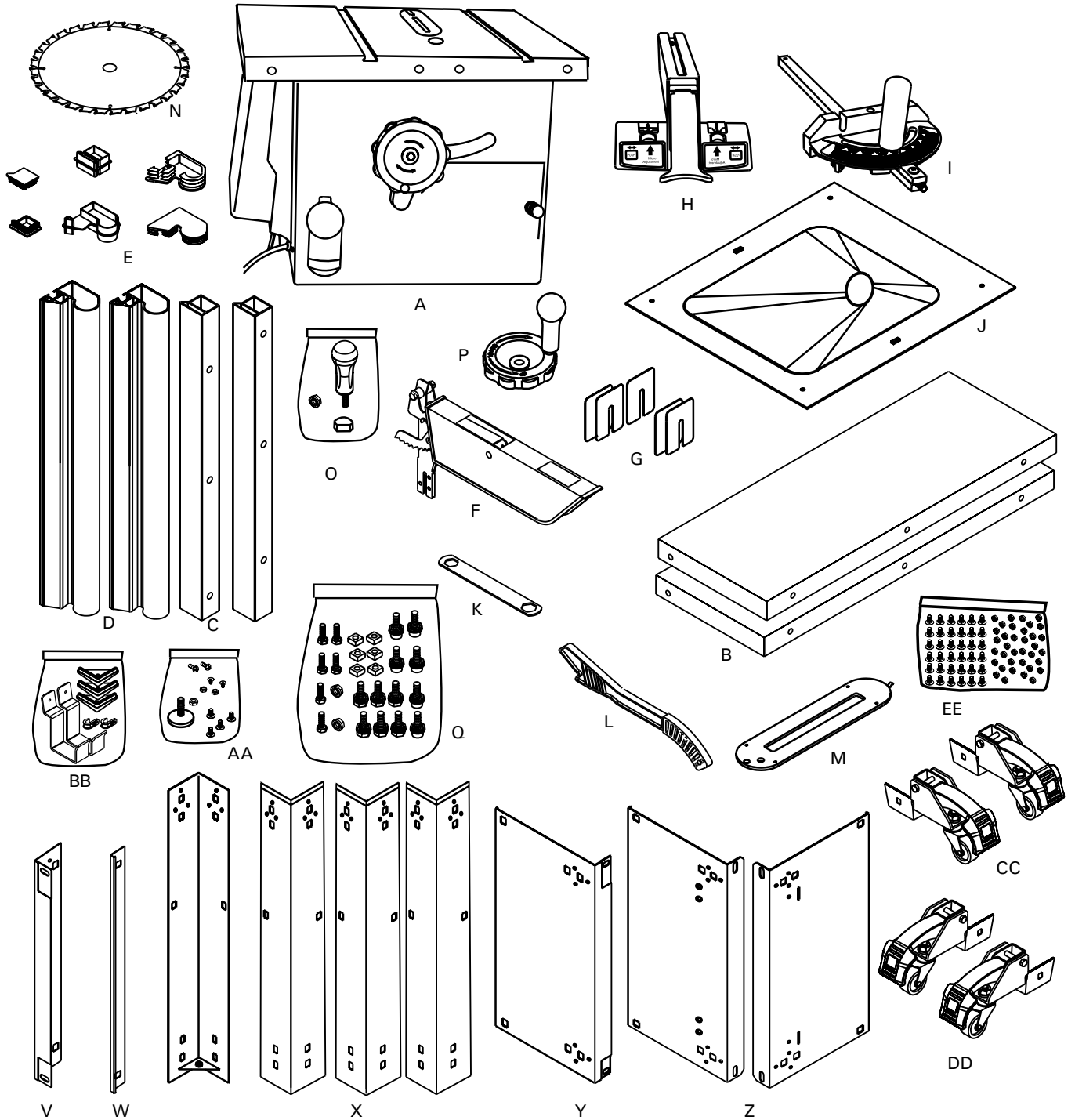
<u>ITEM</u>	<u>DESCRIPTION</u>	<u>QUANTITY</u>
A.	Table saw assembly	1
B.	Table extension wing	2
C.	Rear table extension rail	2
D.	Front table extension rail	2
E.	Rail cover	6
F.	Blade guard and splitter	1 each
G.	Adhesive washer	5
H.	Rip fence	1
I.	Miter gauge	1
J.	Dust chute	1
K.	Blade wrench	1
L.	Push stick	1
M.	Dodo table insert	1
N.	Blade	1
O.	Handwheel handle & nuts	1 each
P.	Handwheel and handle	1
Q.	Table extension hardware	
	Square nut	6
	Hex hd. bolt M8x1.25-16	2
	Hex hd. bolt M8x1.25-20	4
	Hex.socket hd.cap bolt M8x1.25-16	6
	Hex hd. bolt & washer M10x1.5-25	6

STAND

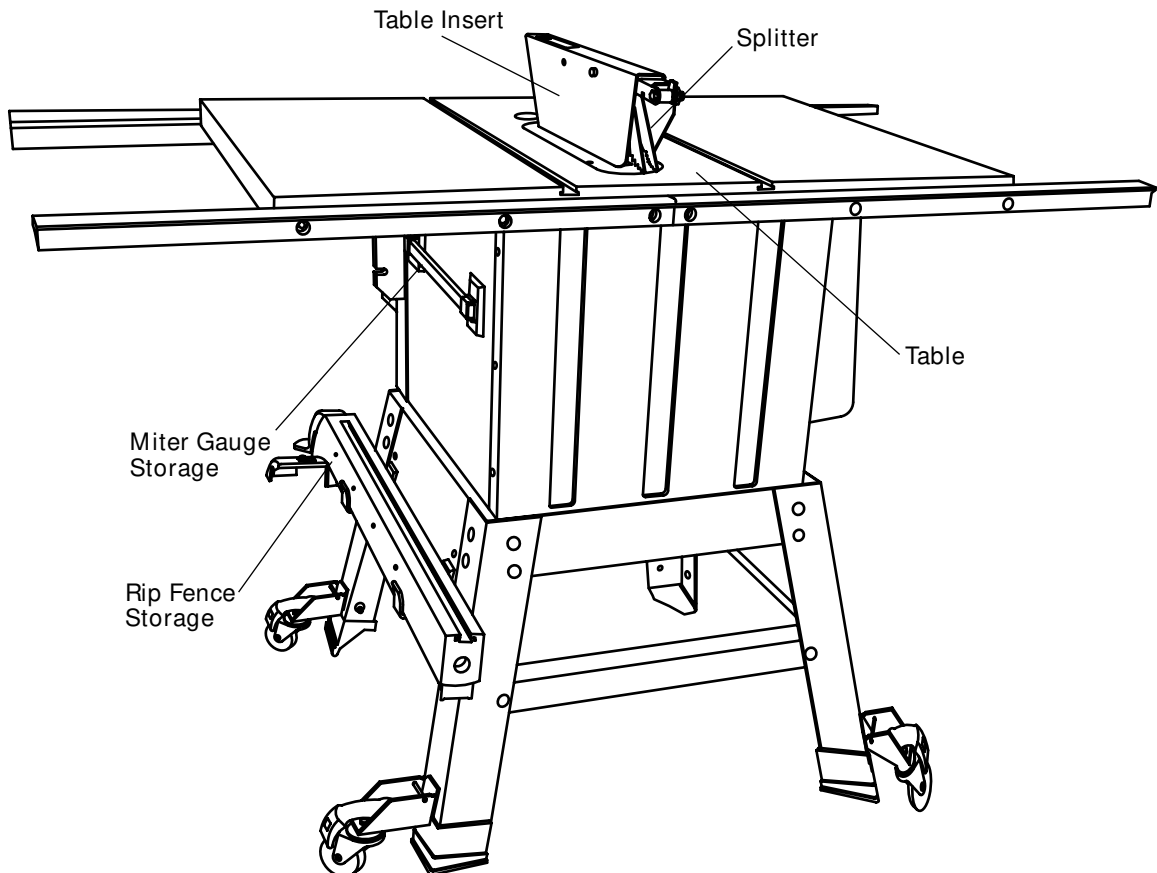
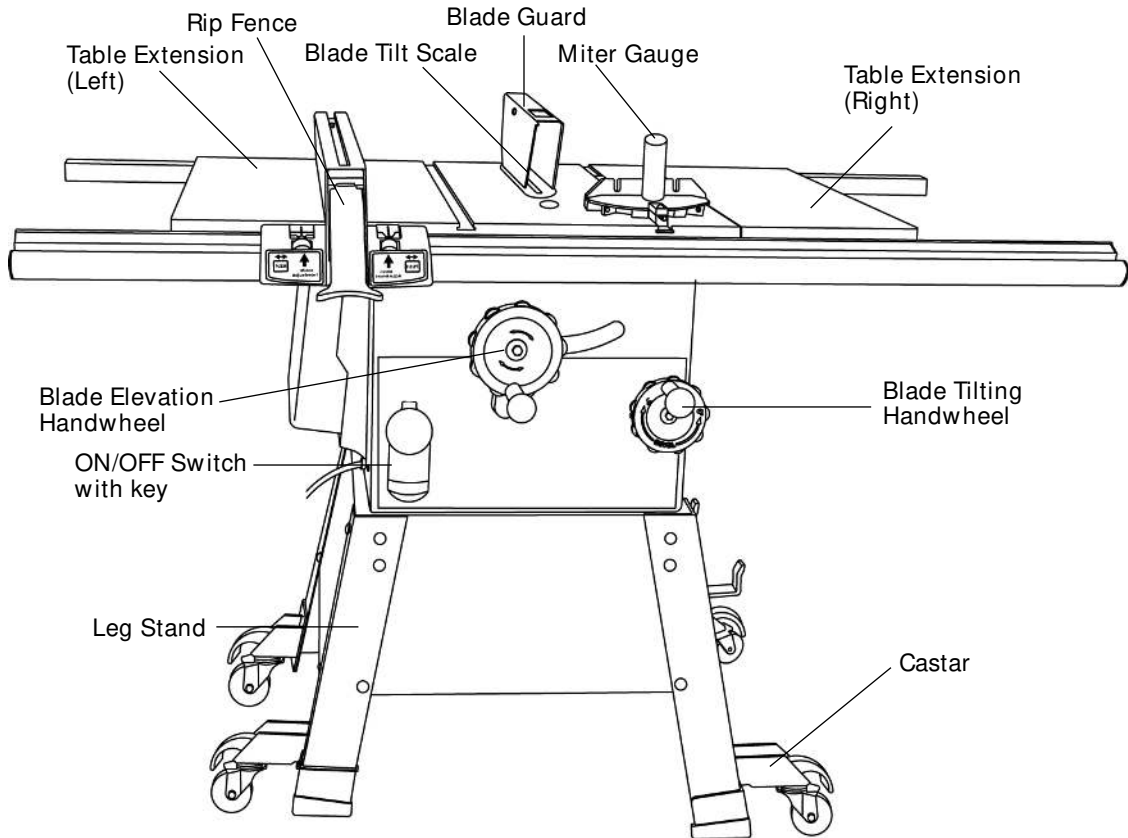
V.	Top leg bracket	1
W.	Bottom leg bracket	1
X.	Leg	4
Y.	Leg front bracket	1
Z.	R & L leg bracket	1 each
AA.	Foot and hardware	1 set
BB.	Storage bracket & foot hardware	1 set
CC.	Caster assemblies A	2
DD.	Caster assemblies B	2
EE.	Stand & caster mounting hardware	36

NOTE: To make assembly easier, keep contents of box together. Apply a coat of automobile wax to the table. Wipe all parts thoroughly with a clean dry cloth. This will reduce friction when pushing the workpiece.

UNPACKING YOUR STATIONARY TABLE SAW



KNOW YOUR STATIONARY TABLE SAW



GLOSSARY OF TERMS

HITACHI PROFESSIONAL TABLE SAW TERMS

MITER GAUGE - A guide used for crosscutting operations that slides in the tabletop channels located on either side of the blade. It helps make accurate straight or angle cuts.

RIP FENCE - A guide used for rip cutting that clamps to the tabletop. It allows the workpiece to be straight.

TABLE INSERT - Provides access to the blade arbor for changing blades.

OVERLOAD RESET SWITCH - Resets the thermocouple and provides a way to restart the saw motor if it overheats or overloads.

BLADE BEVEL SCALE - Measures the angle the blade is tilted when set for a bevel cut.

TABLE SCALE - Measures the distance the rip fence is set from the blade, allowing quick setups.

ANTI-KICKBACK PAWLS - Prevents the workpiece from being kicked upward or back toward the front of the table saw by the spinning blade.

SPLITTER - Keeps the workpiece spread apart after being cut, to prevent binding on the blade and workpiece.

BLADE ELEVATION HANDWHEEL - Raises and lowers the blade.

BLADE TILTING HANDWHEEL - Tilts the blade to any angle between 0° to 45° for bevel cuts.

WOODWORKING TERMS

ARBOR - The shaft on which a blade is mounted.

BEVEL CUT - An angle cut made through the face of the workpiece.

COMPOUND CUT - A simultaneous bevel and miter cut.

CROSSCUT - A cut made across the width of the workpiece.

FREEHAND - Performing a cut without using a fence (guide), hold down or other proper device to prevent the workpiece from twisting during the cutting operation.

GUM - A sticky sap from wood products.

HEEL - Misalignment of the blade.

KERF - The amount of material removed by a blade cut.

MITER CUT - An angle cut made across the width of the workpiece.

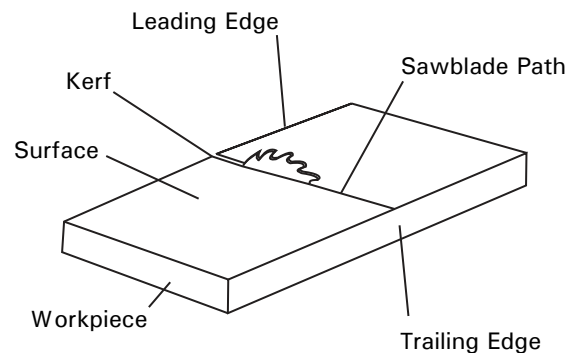
RESIN - A sticky sap that has hardened.

REVOLUTIONS PER MINUTE (RPM) - The number of turns completed by a spinning object in one minute.

SAW BLADE PATH - The area of the workpiece or table top directly in line with the travel of the blade or the part of the workpiece that will be cut.

SET - The distance between two saw blade tips, bent outward in opposite directions to each other. The further apart the tips are, the greater the set.

WORKPIECE - The item being cut. The surfaces of a workpiece are commonly referred to as faces, ends and edges.

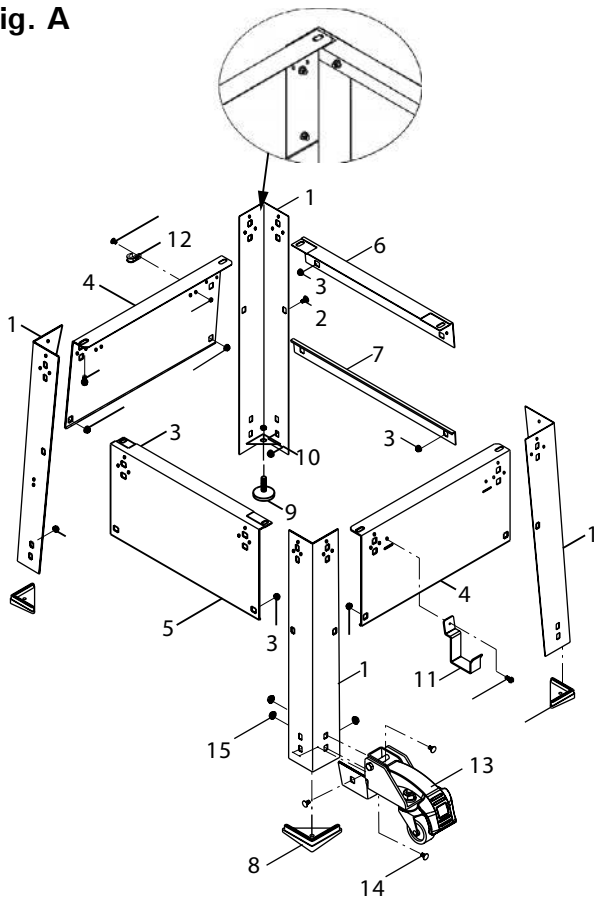


ASSEMBLY AND ADJUSTMENTS

ESTIMATED ASSEMBLY TIME 50 ~ 70 MINUTES (2 PEOPLE) ASSEMBLE STAND (Fig. A)

1. Unpack all parts and group by type and size (Fig. A). Refer to parts list for quantities.
2. Attach one support (4) to leg (1) using one square neck bolt (2) and nut (3).
NOTE: Do not tighten bolts until stand is properly aligned (see step # 7).
3. Attach other end of support to another leg using one square neck bolt and nut.
4. Join front frame assemblies using support (5) square neck bolts and nuts.
5. Join rear frame assemblies using short upper support (6) and short bottom support (7), square neck bolts and nuts.
6. Place three rubber feet (8) onto three leg and the adjustable foot (9) and nut (10) onto the bracket of the other leg.
7. Attach the hooks (11) and power cord storage (12) to the frame as desired. The hooks are used to hold the fence.
8. Place stand on level surface and adjust so all legs are contacting the floor and are at similar angles to the floor. Tighten all bolts.
NOTE: Stand should not rock after all bolts are tightened.
9. Mounting a caster (13) on each leg by tightening three bolts (14) and nuts (15). Four casters.
NOTE: Two casters marked "A" are used for the Front-Right & Rear-Left legs, two casters marked "B" are used for the Front-Left & Rear-Right legs.

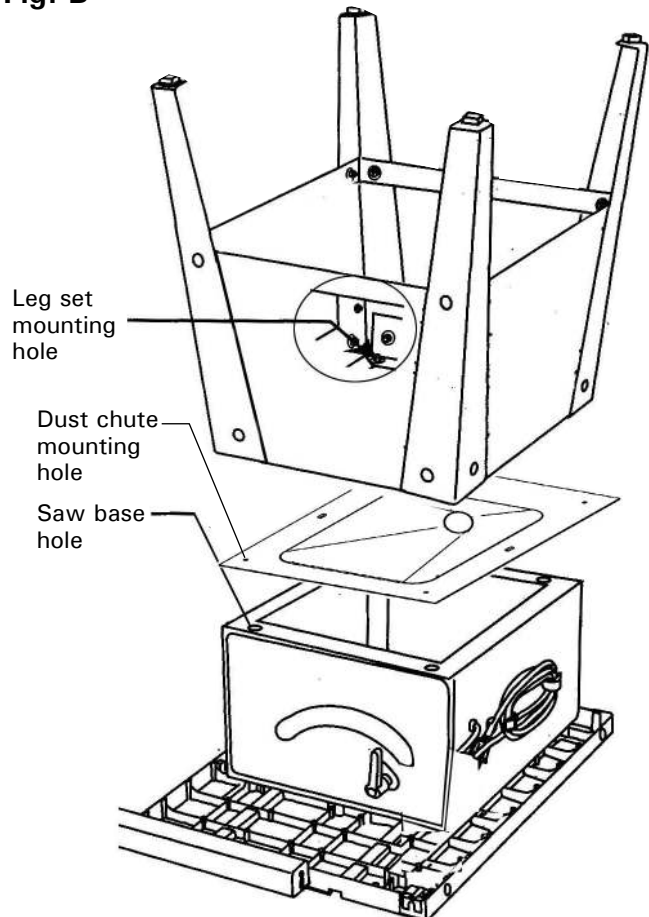
Fig. A



ASSEMBLE TABLE SAW TO STAND (Fig. A, B)

1. Place protective corrugated cardboard or old blanket on floor to protect the saw table surface.
2. Place the saw up-side down on the protective material (Fig. B).
3. Position the recessed-side dust chute and the stand up-side down on the saw base.
NOTE: Make sure front of stand and front of saw are facing the same direction.
4. Line up four holes in saw base, dust chute and stand.
5. Fasten saw to dust chute and stand using four bolts, washers and nuts.
NOTE: Place washer on each bolt before inserting into saw base and through the support. Nut must be flush against the bracket.
6. Tighten all four nuts.
NOTE: Do not overtighten the locknuts mounting the base to the stand (you may damage the base).
7. Carefully set the saw in its upright position on a clean level surface.
8. Push down on the lever of right wheel assemblies to unlock. Push up on the lever of right wheel assemblies to lock.
NOTE: You will need assistance from another person.

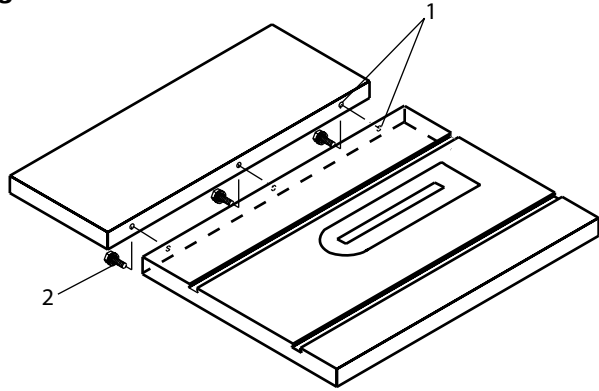
Fig. B



ASSEMBLY THE TABLE EXTENSION (Fig. C)

1. Place the left table extension next to the saw table, aligning the mounting holes (1).
2. Place bolts (2) and thread in mounting holes.
3. Place a straight edge or combination square on the saw table, across the table extension.
4. Adjust the mounting bolts (2) until the extension is flush with the saw table. Tighten.
5. Repeat these procedures for the right extension table.

Fig. C



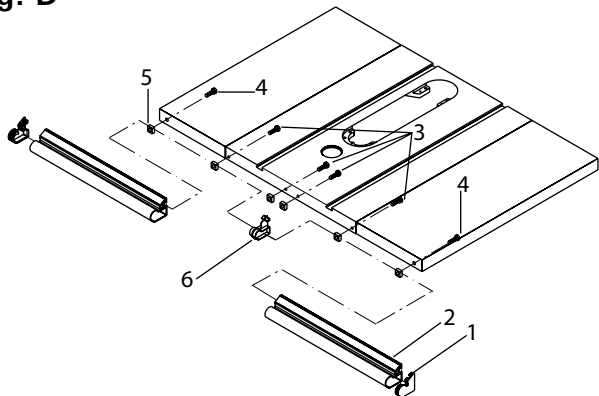
ASSEMBLY THE FRONT AND REAR TABLE RAIL (Fig. D, E)

NOTE: Front of table rails assemblies are different.

Assembly the front rail (Fig. D)

1. Attach the right front side cover (1) into right front table rail (2). Repeat for the left front rail.
2. Place the hex. bolts M8-20 (3), hex bolts M8-16 (4) through the holes at the front table edge. Screw the square nuts (5) onto each bolts.
NOTE: Keep the bolts and square nuts loosened before front rail fixed.
3. Attach the right front rail onto proper location by having the square nuts pass through the slot of the front rail. Repeat for the left front rail.
4. Attach the middle plug (6) to connect the two half front rail. (Fig. E)
5. When the blade was installed, use the rip fence and gauge to adjust the front rail to proper location. When the front rail is level with table, then fix the front rail by tightening the six bolts.

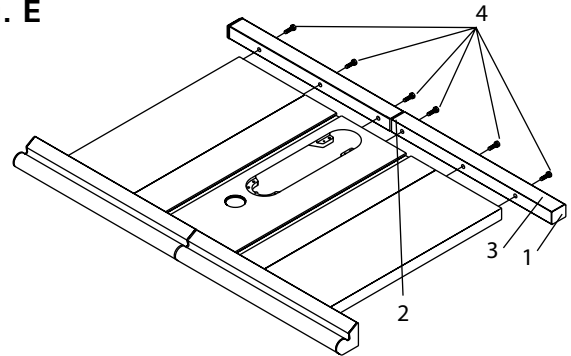
Fig. D



Assembly the rear table rail (Fig. E)

6. Attach the side covers (1) and middle plug (2) to the rear table rails (3).
7. Place the rear table rails on the saw table, aligning with the holes in each rail.
8. Place the bolts (4) and tread in the holes; tighten the bolts and check the alignment again.

Fig. E



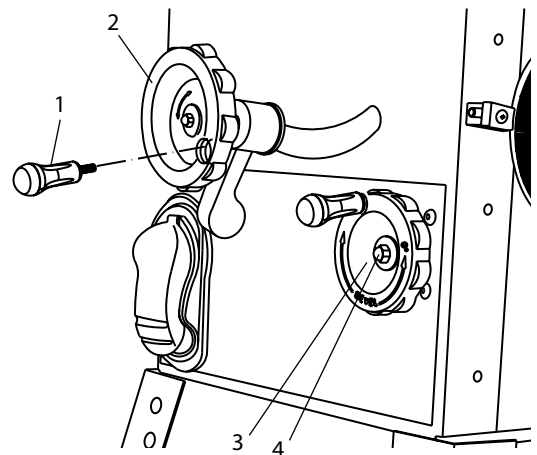
BLADE RAISING HANDWHEEL (Fig. F)

Thread the blade handwheel handle (1) into blade raising handwheel (2) and tighten.

BLADE TILTING HANDWHEEL (Fig. F)

1. Attach the blade tilting handwheel (3) to the elevation screw at the front of the saw.
2. Attach and tighten the dome nut (4) at the end of the shaft.

Fig. F



BLADE GUARD ASSEMBLY (Fig. G, H)

⚠ WARNING

To avoid injury from an accidental start, make sure the switch is in the OFF position and the plug is disconnected from the power source outlet.

When installing the blade guard, cover the blade teeth with a piece of folded cardboard to protect yourself from possible injury.

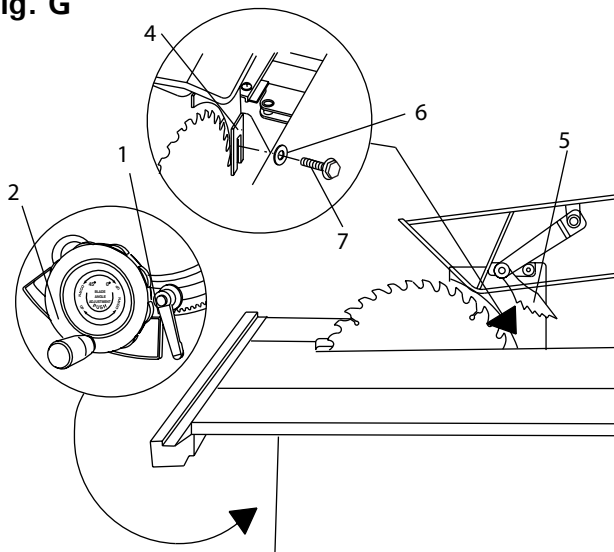
Never operate this machine without the safety guard in place for all through sawing operations.

Installing the blade guard assembly (Fig. G)

1. Remove the table insert.
2. Unlock the blade bevel lock knob (1).
3. With the blade elevation handwheel (2), raise the blade to the maximum height.
4. Using the blade tilting handwheel, tilt the blade to 45° on the bevel scale.
5. Lock the blade tilt locking knob.
6. Locate the splitter assembly mounting bracket (4) in back of the blade.
7. Cover the blade teeth with a folded cardboard or position the plastic blade guard over the blade to protect your hands.
8. Place the two kickback pawls (5) toward the rear of the table, and align the splitter mounting holes to the holes in the bracket.
9. Place the steel flat washers (6) on the two bolts (7) and thread the bolts into the holes.
10. Tighten the bolts with the angled wrench.

Note: Make sure the "anti-kick back pawls" do not get caught between the insert and the guard, but rest on top of the insert.

Fig. G



Removing the blade guard assembly (Fig. H)

⚠ WARNING

To avoid injury from an accidental start, make sure the switch is in the OFF position and the plug is disconnected from the power source outlet.

1. Remove the table insert.
2. With the blade elevation handwheel (1), raise the blade to the maximum height.
3. Loosen blade lock handle (2) and move the handwheel (1) to 45° on the bevel scale.
4. Tighten the bevel lock handle.
5. Cover the blade teeth with a piece of folded cardboard or position the plastic blade guard over the blade to protect your hands.
6. Loosen the knob (5) and remove the blade guard assembly, then retighten the knob.
7. Return the blade to 90° and replace the table insert.

Note: Make sure the "anti-kick back pawls" do not get caught between the insert and the guard, but rest on top of the insert.

ALIGNING THE BLADE GUARD SPLITTER (Fig. H)

⚠ WARNING

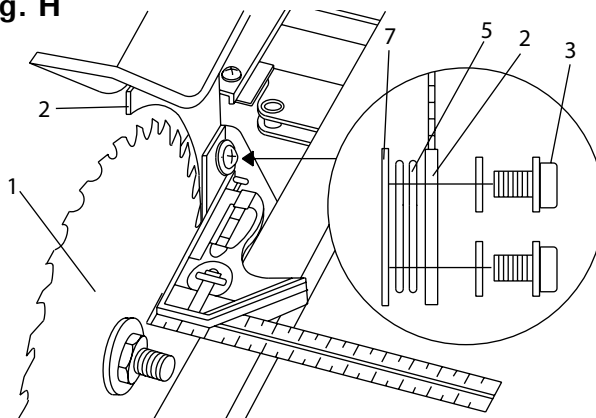
To avoid injury from an accidental start, make sure the switch is in the OFF position and the plug is disconnected from the power source outlet.

- When installing the blade guard, cover the blade teeth with a piece of folded cardboard to protect yourself from possible injury.
- Never operate this machine without the safety guard in place for all through sawing operations.

IMPORTANT: The splitter must always be correctly aligned with the blade so the cut workpiece will pass on either side without binding or twisting.

1. Remove the table insert and raise the blade to the maximum height by turning the blade elevation handwheel clockwise.
2. Lift the blade guard and position it toward the rear of the table.
3. Adjust the blade to the 90° vertical position by unlocking the blade tilting lock knob and turning the bevel tilting handwheel counterclockwise, and then lock into position.
4. To see if the blade (1) and splitter (2) are correctly aligned, lay a combination square along the side of the blade and against the splitter (making sure the square is between the teeth of the blade).
5. Tilt the blade to the 45° position and check the alignment again.
6. If the blade and splitter are not correctly aligned:
 - a. Remove the blade guard by removing the wing bolt that locks the guard in place.
 - b. Loosen and remove the two bolts (3) from the mounting bracket (7).
7. Place two adhesive washers (5) on the guard mounting bracket (attached to the saw). Position them over the corresponding mounting bolt holes (refer to step 6-b) after removing the adhesive backing affixed to the washers.
8. Replace the two guard mounting bolts (3) and tighten securely. Also reattach the blade guard assembly, affixing it to the machine by its corresponding wing bolt.
9. Check the splitter and blade alignment again at both 90° and 45°.
10. Add or remove the adhesive washers until the alignment is correct.
11. Replace the table insert.

Fig. H



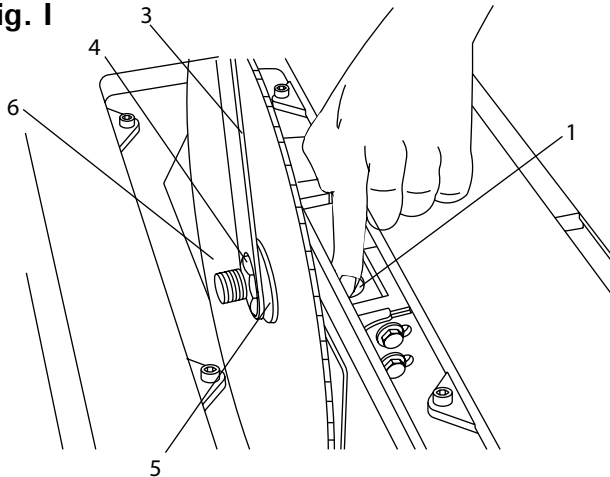
REMOVING THE BLADE (Fig. I)

⚠ WARNING

To avoid injury from an accidental start, make sure the switch is in the OFF position and the plug is disconnected from the power source outlet.

1. Remove the table insert and raise the blade to the maximum height by turning the blade elevation handwheel clockwise.
2. Lift the blade guard and position it toward the rear of the table.
3. Adjust the blade to the 90° vertical position by unlocking the blade tilting lock knob and turning the bevel tilting handwheel counterclockwise, and then lock into position.
4. Pull the motor locking lever (1) toward the front of the machine while spinning the blade until the latch locks into place and the blade will no longer turn.
5. Place the blade wrench (3) on the arbor nut (4).
6. Loosen and remove the arbor nut and the flange by pulling the wrench toward the front of the machine (5).
7. Then remove the blade (6). Clean but do not remove the inner blade flange (5) before reassembling the blade.

Fig. I



INSTALLING A BLADE (Fig. I)

⚠ WARNING

To avoid injury from an accidental start, make sure the switch is in the OFF position and the plug is disconnected from the power source outlet.

1. Place the blade onto the arbor with the blade teeth pointing forward to the front of the saw.
2. Make sure the blade fits flush against the inner flange.
3. Clean the outer blade flange and install it onto the arbor and against the blade.
4. Thread the arbor nut onto the arbor, making sure the flat side of the nut is against the blade, then hand-tighten.
5. Pull the motor locking lever (1) toward the front of the machine while spinning the blade until the latch locks into place and the blade will no longer turn.

6. Place the wrench on the arbor nut and turn clockwise (toward the rear of the saw table).
7. Replace the table insert and blade guard assembly. Verify that the blade and blade guard splitter are aligned. If they are not, refer to page 14, Aligning The Blade Guard Splitter.

IMPORTANT: Do not operate this saw until the blade and blade guard splitter are aligned and in working order.

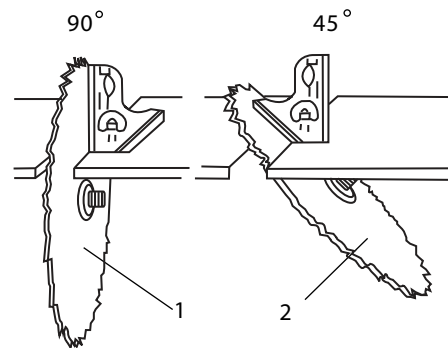
ADJUSTING THE 90° AND 45° POSITIVE STOPS (Fig. J, K)

Your saw has positive stops that will quickly position the saw blade at 90° and 45° to the table. Make adjustments only if necessary.

90° Stop

1. Remove the table insert.
2. Disconnect the saw from the power source.
3. Raise the blade to the maximum elevation.
4. Loosen the blade bevel lock handle and move the blade to the maximum vertical position and tighten the bevel lock handle.
5. Place a combination square on the table and against the blade (1) to determine if the blade is 90° to the table. (Fig. J)
6. If the blade is not 90° to the table, loosen or tighten (depending on increasing or decreasing the degree) the hex screw (3) with a 5mm hex wrench until you achieve 90°. (Fig. K)
7. Then, re-loosen the bevel lock handle and reset the blade at the maximum vertical position, then tighten the bevel lock handle.
8. Check again to see if the blade is 90° to the table. If not, repeat step 5.
9. Lastly, check the bevel angle scale. If the pointer does not read 90°, loosen the screw holding the pointer and move the pointer so it is accurate at 0° and retighten the pointer screw.

Fig. J

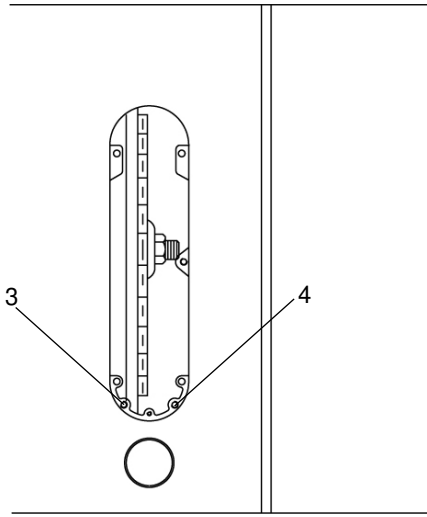


45° Stop

1. Disconnect the saw from the power source.
2. Raise the blade to the maximum elevation.
3. Loosen the blade bevel lock handle and move the blade to the maximum bevel position (45°) and tighten the bevel lock handle.
4. Place a combination square on the table and against the blade (1) to determine if the blade is 45° to the table. (Fig. J)
5. If the blade is not 45° to the table, loosen or tighten (depending on increasing or decreasing the degree) the hex screw (4) with a 5mm hex wrench until you achieve 45°. (Fig. K)

6. The, re-loosen the bevel lock handle and reset the blade at the maximum bevel position (45°), then tighten the bevel lock handle.
7. Check again to see if the blade is 45° to the table. If not, repeat step 5.

Fig. K

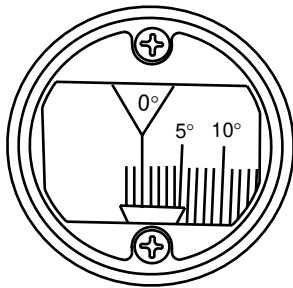


BLADE TILTING INDICATOR (Fig. L)

1. When the blade is positioned at 90°, adjust the blade tilt pointer to read 0° on the scale.
2. Remove the magnifier, position the pointer over 0° and replace the magnifier.

NOTE: Make a trial cut on scrap wood before making critical cuts. Measure for accuracy.

Fig. L



BLADE PARALLEL TO THE MITER GAUGE GROOVE (Fig. M)

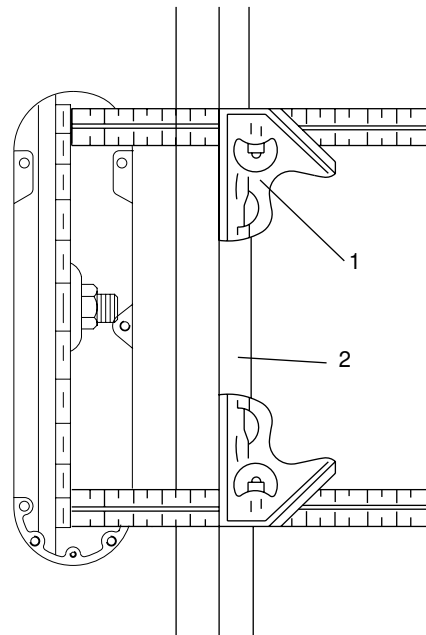
To avoid injury from an accidental start, make sure the switch is in the OFF position and the plug is disconnected from the power source outlet.

This adjustment was made at the factory, but it should be rechecked and adjusted if necessary.

This adjustment must be correct or kickback could result in a serious injury and accurate cuts cannot be made.

1. Remove the yellow switch key and unplug the saw.
2. Raise the blade guard away from the blade.
3. Raise the blade to the maximum height and set the bevel angle at 0°.
4. Select and mark with a felt tip marker, one blade tooth with a “right set” angle and position this tooth at the front of the saw approximately 1/2” above the table.
5. Place the combination square base (1) into the right side miter gauge groove (2) flush against the inside of the miter gauge groove. (Fig. M)
6. Adjust the ruler so it touches the front marked tooth and lock ruler so it holds its position in the square assembly.
7. Rotate the blade to the rear of the saw bringing the marked tooth approximately 1/2” above the blade.
8. Carefully slide the combination square to the rear until the ruler touches the marked tooth.
9. If the ruler touches the marked tooth at the front and rear position, no adjustment is needed at this time. If not, perform adjustment procedure described in next section.

Fig. M



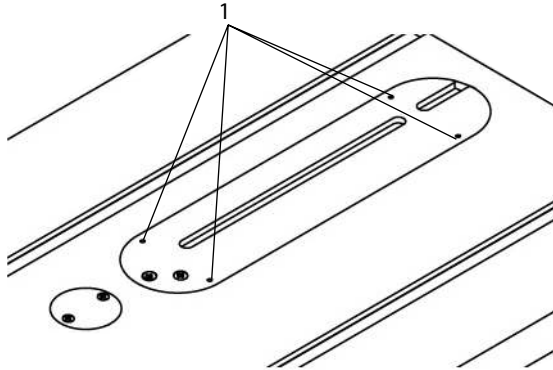
INSTALLING THE TABLE INSERT (Fig. N)

The table insert has been previously installed on your unit. However, you must verify that the table insert is flush with the table top surface on all four corners of the insert.

If the table insert is not flush with the table, adjust the four bolts (1) with a 4mm hex. wrench until it is parallel with the table.

Note: To raise the insert, turn the hex screws counterclockwise, to lower the insert, turn the hex screws clockwise.

Fig. N

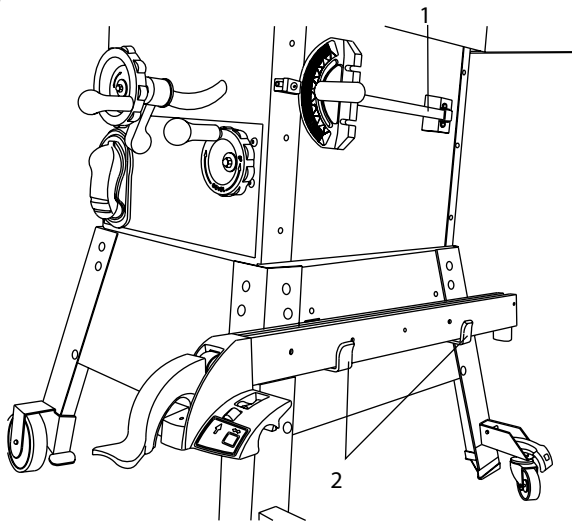


STORAGE (Fig. O, P)

Rip fence and miter gauge (Fig. O)

Storage brackets for the rip fence (2) and miter gauge (1) are located on the right side of the saw housing and frame of leg.

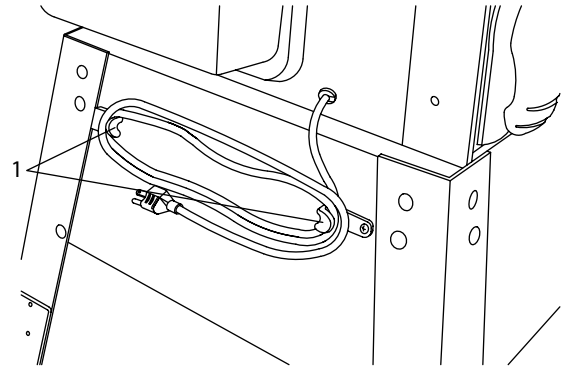
Fig. O



Power Cord (Fig. P)

For convenience and to prevent damage to the power cord when the table saw is not in use or is being transported, the frame of leg has two brackets (1) on the side for cord atorage.

Fig. P



MITRE GAUGE ADJUSTMENT (Fig. Q)

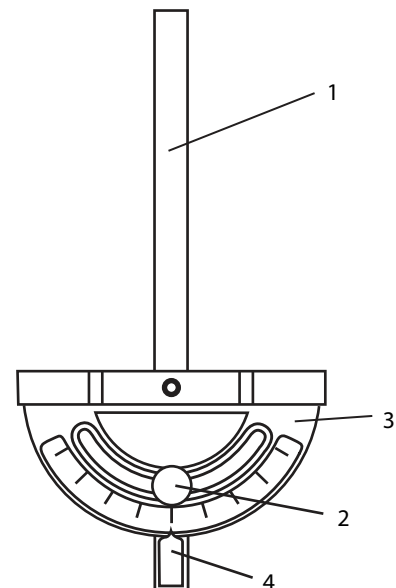
1. Make sure that the miter gauge bar (1) will slide freely through the table top grooves.
2. Loosen the lock knob handle (2) and turn the gauge body (3) to set the pointer (4) at 0° on the scale.
3. Make a 90° cut in a scrap piece of wood. Check the cut to see if it is 90°. If not, loosen the lock knob handle (2) and move the miter gauge body until it is square to the miter gauge bar by using a combination square.

MITRE GAUGE OPERATION (Fig. Q)

The miter gage is accurately consturcted with index stops at 0°, 15°, 30°, 45°, 60° both right and left side.

The operate the miter gage, simply loosen the lock handle (2) and move the body of the miter gauge to the desired angle. The miter gauge body will stop at 0°, 15°, 30°, 45°, 60° both right and left side.

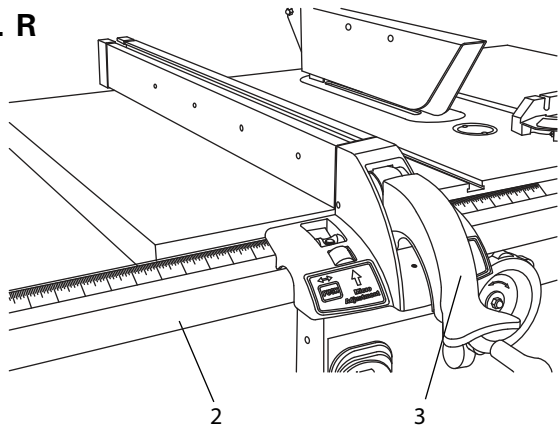
Fig. Q



RIP FENCE ADJUSTMENT (Fig. R)

1. For adjustments, position the fence to the right of the blade, parallel with the miter gauge groove.
2. Place the rear clamp (1) of the fence on the back rail of the table, and lower the front end over the front rail (2). Push the handle (3) down to lock.
3. To change the position of the fence, lift up on the handle to unlock, and slide the fence to the desired position, then push the handle down to lock.

Fig. R



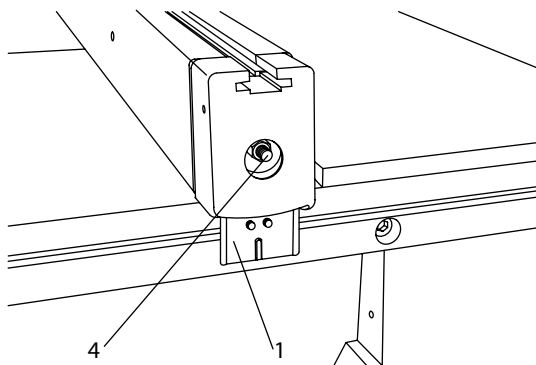
If the fence is loose when the handle is in the locked position: (Fig. S)

1. Move the handle upward to the unlocked position. Turn the adjusting screw (4) clockwise until the rear clamp is snug.
2. DO NOT turn the adjusting screw more than 1/4 turn at a time.
3. Over-tightening the screw will cause the rip fence to come out of alignment.

⚠ WARNING

Failure to properly align the fence can cause "kickback" and serious injury could occur.

Fig. S

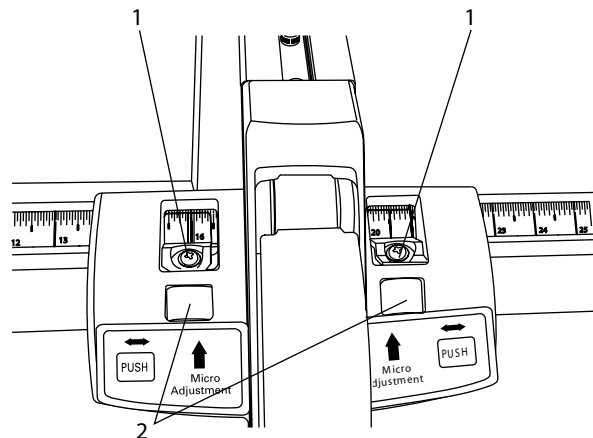


RIP FENCE INDICATOR (Fig. T)

NOTE: The rip fence indicator points to the scale on the front of the table saw. Measurement shown by the indicator will provide the user with accuracy up to 1/16 of an inch. Measurement shown is the distance from the blade to the side of the fence closest to the blade.

1. To check the accuracy, measure the actual distance to the side of the rip fence. If there is a difference between the measurement and the indicator, adjust the indicator as shown next.
2. Loosen the indicator screws (1). Slide the indicator to the correct measurement position on the scale, then retighten the indicator screws (1).

Fig. T



RIP FENCE OPERATION

The rip fence moves to either side of saw blade. The right side is the most common position. Front and rear guide the fence. Calibrations on the front guide rail show distance between fence and saw blade.

To adjust rip fence, raise clamp lever to maximum height, push fence desired distance from saw blade, and turning micro-set knob (2) left or right.

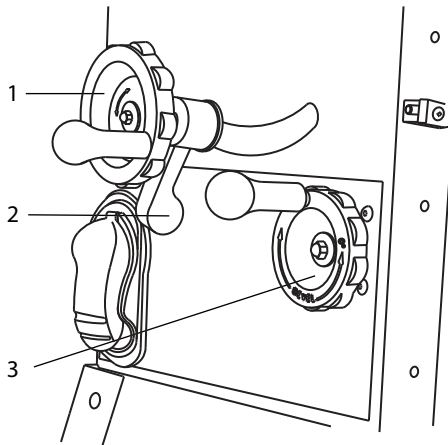
OPERATION

BASIC SAW OPERATIONS

RAISE THE BLADE (Fig. U)

To raise or lower the blade, turn the blade elevation handwheel (1) to the desired blade height, and then tighten the bevel lock handle (2) to maintain the desired blade angle.

Fig. U



TILTING THE BLADE

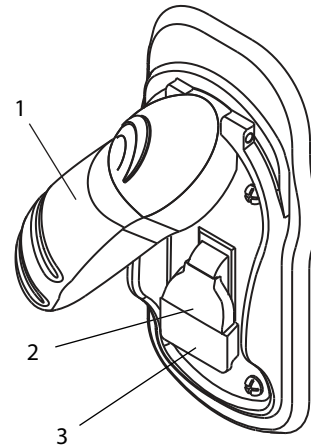
1. To tilt the saw blade for bevel cutting, loosen the lock knob (2) and turn the tilting handwheel (3).
2. Tighten the lock knobs (2) to secure.

ON / OFF SWITCH (Fig. V)

The ON / OFF switch has a removal key. With the key removed from the switch, unauthorized and hazardous use by children and others is minimized.

1. To turn the saw ON, lift switch cover (1) and insert the safety switch key (2) into the slot in the switch. Move the switch (3) upward to the ON position.
2. To turn the saw OFF, move the switch downward.
3. To lock the switch in the OFF position, grasp the end (or yellow part) of the safety switch key, and pull it out.
4. With the safety switch key removed, the switch will not operate.
5. If the safety switch key is removed while the saw is running, it can be turned OFF but cannot be restarted without inserting the safety switch key.

Fig. V



OVERLOAD PROTECTION

This saw has an overload relay button that resets the motor after it shuts off due to overloading or low voltage. If the motor stops during operation, turn the ON / OFF switch to the OFF position. Wait about five minutes for the motor to cool, push in on the reset button and turn the switch to the ON position.

CUTTING OPERATIONS

There are two basic types of cuts: ripping and crosscutting. Ripping is cutting along the length and the grain of the workpiece. Crosscutting is cutting either across the width or across the grain of the workpiece. Neither ripping nor crosscutting may be done safely freehand. Ripping requires the use of the rip fence, and crosscutting requires the miter gauge.

⚠ WARNING

Before using the saw each and every time, check the following:

1. The blade is tightened to the arbor.
2. The bevel angle lock knob is tight.
3. If ripping, the fence is locked into position & is parallel to the miter gauge groove.
4. The blade guard is in place and working properly.
5. Safety glasses are being worn.

The failure to adhere to these common safety rules, and those printed in the front of this manual, can greatly increase the likelihood of injury.

RIPPING (Fig. W, X)

WARNING

To prevent serious injury:

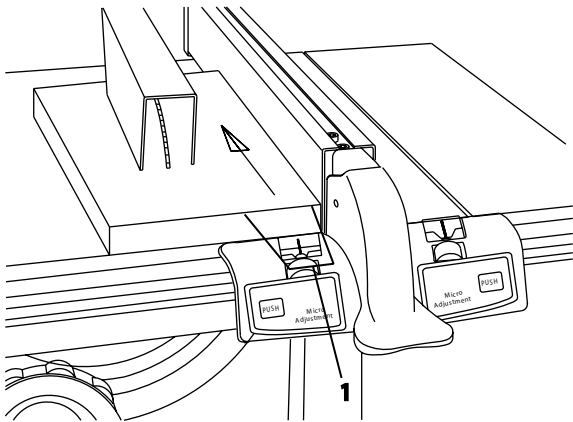
- Never use a miter gauge when ripping.
- Do not allow familiarity or frequent use of your table saw to cause careless mistakes. Remember that even a careless fraction of a second is enough to cause a severe injury.
- Keep both hands away from the blade and clear from the path of the blade.
- The workpiece must have a straight edge against the fence and must not be warped, twisted, or bowed when ripping.

1. Remove the miter gauge and store it in the "storage" compartment in the base of the saw.
2. Secure the rip fence to the table.
3. Raise the blade so it is about 1/8" higher than the top of the workpiece.
4. Place the workpiece flat on the table and against the fence. Keep the workpiece away from the blade.
5. Turn the saw ON and wait for the blade to come to full speed.
6. Slowly feed the workpiece into the blade by pushing forward only on the workpiece section (1) that will pass between the blade and the fence. (Fig. W)

WARNING

AVOID KICKBACK by pushing forward on the section of the workpiece that passes between the blade and the fence. Never perform any freehand operations.

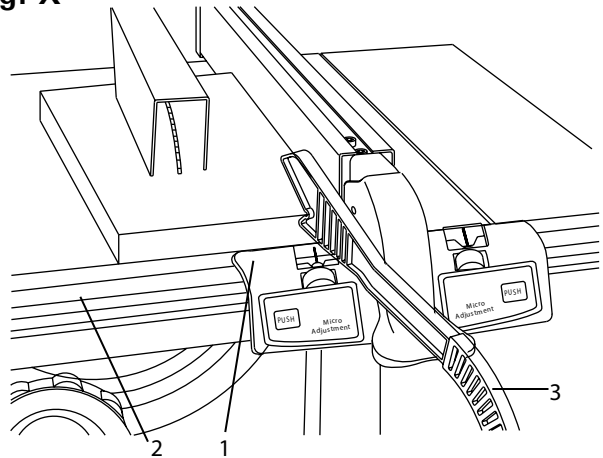
Fig. W



NOTE: Always use a push stick. When width of the rip is narrower than 2" the push stick cannot be used because the guard will interfere... therefore, use the auxiliary fence so the push stick can be used as shown on page 26.

7. Keep your thumbs off the table top. When both of your thumbs touch the front edge of the table (2), finish the cut with a push stick. To make an additional push stick, use the pattern on page 26.
8. The push stick (3) should always be used. (Fig. X)
9. Continue pushing the workpiece with the push stick (3) until it passes through the blade guard and clears the rear of the table.
10. Never pull the piece back when the blade is turning. Turn the switch OFF. When the blade completely stops, you can then remove the workpiece.

Fig. X



BEVEL RIPPING

This cut is the same as ripping except the blade bevel angle is set to an angle other than " 0° ".

RIPPING SMALL PIECES

To avoid injury from the blade contact, never make cuts narrower than 1/2" wide.

1. It is unsafe to rip small pieces. Instead, rip a larger piece to obtain the size of the desired piece.
2. When a small width is to be ripped and your hand cannot be safely pressed between the blade and the rip fence, use one or more push sticks to move the workpiece. Always use a push stick during ripping operations.

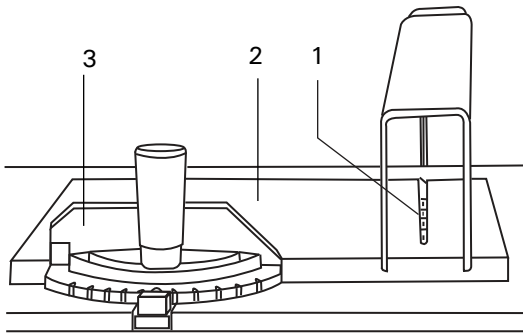
CROSSCUTTING (Fig. Y)

To prevent serious injury:

- Do not allow familiarity or frequent use of your table saw to cause careless mistakes. Remember that even a careless fraction of a second is enough to cause a severe injury.
- Keep both hands away from the blade and the path of the blade.

1. Remove the rip fence and place it in the "storage" compartment of the table saw base.
2. Place the miter gauge either groove in the table top.
3. Adjust the blade height so it is 1/8" higher than the top of the workpiece.
4. Hold the workpiece firmly against the miter gauge with the blade path in line with the desired cut location.
5. Start the saw and wait for the blade (1) to come up to full speed.
6. Keep the workpiece (2) against the face of the miter gauge (3) and flat against the table. Then slowly push the workpiece through the blade. (Fig. Y)
7. Do not try to pull the workpiece back with the blade turning. Turn the switch OFF, wait for the blade to come to a complete stop, then carefully slide the workpiece.

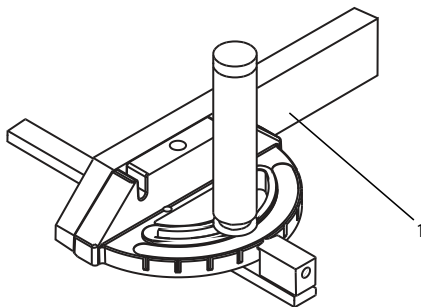
Fig. Y



USING WOOD FACING ON THE MITER GAUGE (Fig. Z)

Slots are provided in the miter gauge for attaching an auxiliary facing (1) to make it easier to cut very long or short pieces. Select a suitable piece of smooth wood, drill two holes through it and attach it to the miter gauge with screws. Make sure the facing does not interfere with the proper operation of the sawblade guard. When cutting long workpieces, you can make a simple outfeed support by clamping a piece of plywood to a sawhorse.

Fig. Z

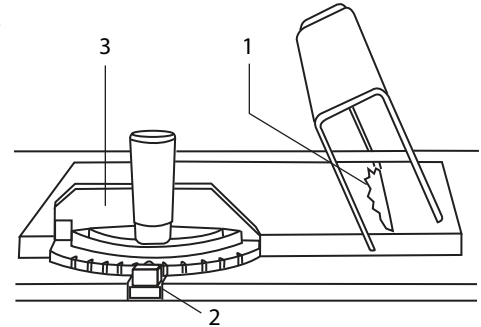


BEVEL CROSSCUTTING (Fig. AA)

This cutting operation is the same as crosscutting except the blade is at bevel angle other than 0°.

1. Adjust the blade (1) to the desired angle, and tighten the blade lock knob.
2. Always work to the left side of the blade. The miter gauge (3) must be in the left side groove (2).

Fig. AA

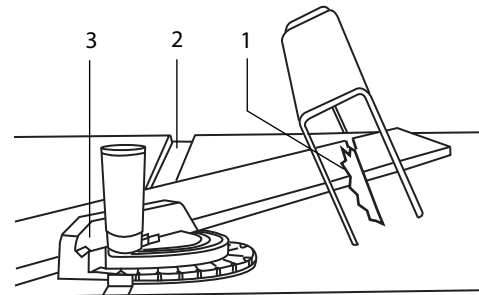


COMPOUND MITER CROSSCUTTING (Fig. BB)

This sawing operation is combining a miter angle with a bevel angle.

1. Set the miter gauge (3) to the desired angle. Use only the left side groove (2) for this specific operation.
2. Set the blade (1) bevel to the desired angle.
3. Carefully push the miter gauge to begin the cutting operation.

Fig. BB

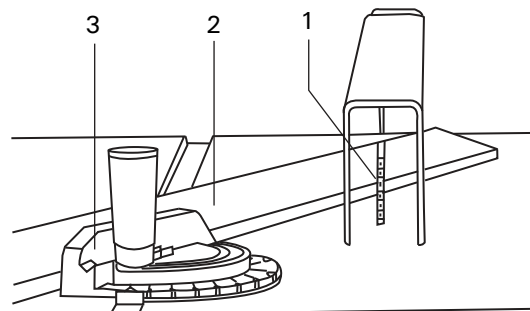


MITERING (Fig. CC)

This sawing operation is the same as crosscutting except the miter gauge is locked at an angle other than 90°.

1. Hold the workpiece (2) firmly against the miter gauge (3).
2. Feed the workpiece slowly into the blade (1) to prevent the workpiece from moving.

Fig. CC

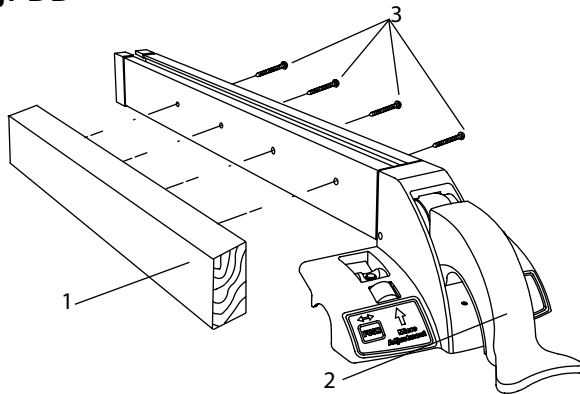


USING WOOD FACING ON THE RIP FENCE (Fig. DD)

When performing some special cutting operations, add a wood facing (1) to the side of the rip fence between the fence and the blade where you will be cutting (2).

1. Use a smooth & straight 3/4" thick wood board (1) measure as long as the rip fence is.
2. Attach the wood facing to the fence with wood screw (3) through the hole in the fence. A wood fence should be used when ripping material such as thin paneling to prevent the material from catching between the bottom of the fence and the table.

Fig. DD



AUXILIARY FENCE (Fig. EE)

Making the base:

- Start with a piece of 3/8" plywood at least 5-1/2" wide or wider and 30" long or longer.
- Cut the piece to shape and size shown:

Making the side:

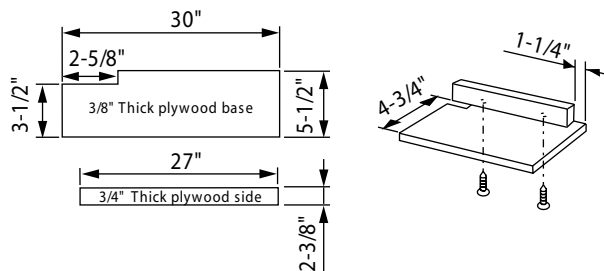
- Start with a piece of 3/4" plywood at least 2-3/8" wide or wider and 27" long or longer.
- Cut the piece to shape and size shown:

Putting it together:

- Put the pieces together, as shown:

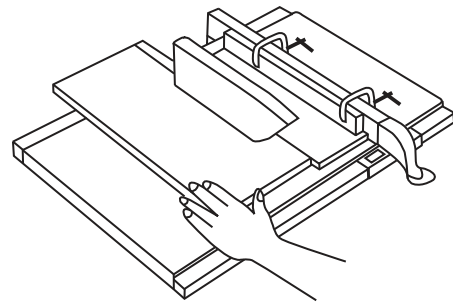
Make sure the screw heads do not stick out from the bottom of the base, they must be flush or recessed. The bottom must be flat and smooth enough to rest on the saw table without rocking.

Fig. EE



Attach auxiliary fence to rip fence with two "C" clamps. (Fig. FF)

Fig. FF

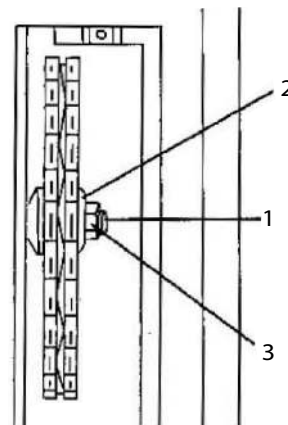


DADO CUTS (Fig. GG)

1. The dado blade insert is included with this saw. Remove the saw blade, original table insert and blade guard. Install the dado and dado blade insert.
2. Instruction for operating the dado is packed with the separately purchased dado set.
3. The arbor (1) on this saw restricts the maximum width of the cut to 13/16".
4. When making full 13/16" dado cuts, it is not necessary to install the outside flange (2) before screwing on the arbor nut (3). Make sure that the arbor nut (3) is tight, and that at least one thread of the arbor sticks out past the nut.
5. Do not exceed 8" diameter dados and keep the width 13/16" or less. It will be necessary to remove the blade guard and splitter when using a dado blade. Always use caution when operating a dado blade.
6. Use only the correct number of round outside blades and inside chippers as shown in the dado set. instruction manual. Blade or chipper must not exceed 13/16".
7. Check saw to ensure that the dado will not strike the housing, insert, or motor when in operation.

For your own safety, always replace the blade, blade guard assembly, and blade insert when you are finished with the dado operation.

Fig. GG



MAINTENANCE

MAINTAINING YOUR TABLE SAW

GENERAL MAINTENANCE

For your own safety, turn the switch OFF and remove the switch key. Remove the plug from the power source outlet before maintaining or lubricating your saw.

1. Clean out all sawdust that has accumulated inside the saw cabinet and the motor.
2. Polish the saw table with an automotive wax to keep it clean and to make it easier to slide the workpiece.
3. Clean cutting blades with pitch and gum remover.
4. A worn, cut, or damaged power cord should be replaced immediately.

All electrical or mechanical repairs should be attempted only by a trained repair technician. Contact Hitachi Authorized Service Center for service. Use only identical replacement parts. Any other parts may create a hazard.

5. Use liquid dish washing detergent and water to clean all plastic parts.

NOTE: Certain cleaning chemicals can damage plastic parts.

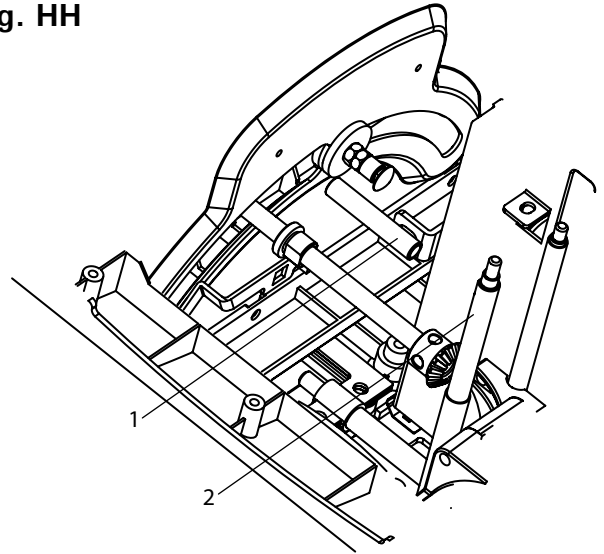
6. Avoid use of cleaning chemicals or solvents, ammonia and household detergents containing ammonia.

BLADE RAISING AND TILTING MECHANISM (Fig. HH)

After each five hours of operation, the blade raising mechanism and tilting mechanism should be checked for looseness, binding, or other abnormalities.

1. With the saw disconnected from the power source, turn the saw upside down and alternately pull upward and downward on the motor unit.
2. Observe any movement of the motor mounting mechanism. Looseness or play in the blade raising screw rod (1) should be limited to 1/8" or less.
3. If excessive looseness is observed in any other part of the blade raising mechanism or tilting mechanism, contact Hitachi Authorized Service Center immediately.

Fig. HH



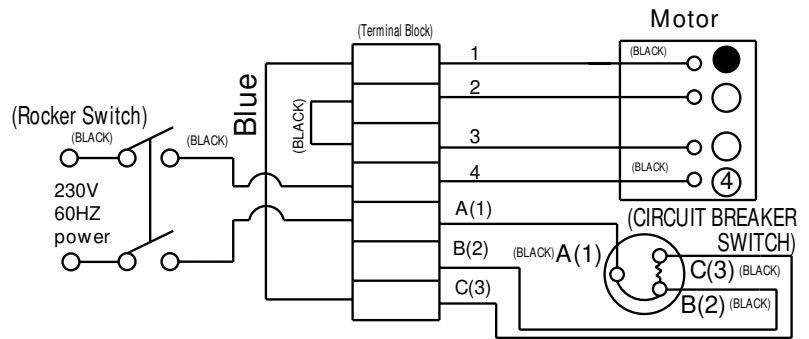
Place a small amount of dry lubricant on the bevel gear (2). The screw rod (1) must be kept clean and free of sawdust, gum, pitch, and other contaminants for smooth operation.

If excessive looseness is observed in any parts of the blade raising mechanism or tilting mechanism, contact Hitachi Authorized Service Center.

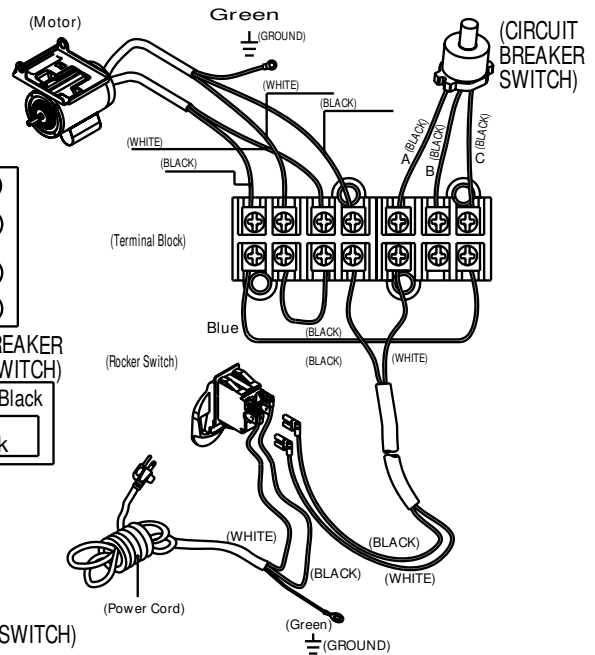
LUBRICATION

All motor bearings are permanently lubricated at the factory and require no additional lubrication. On all mechanical parts of your table saw where a pivot or threaded rod are present, lubricate using graphite or silicone. These dry lubricants will not hold sawdust as would oil or grease.

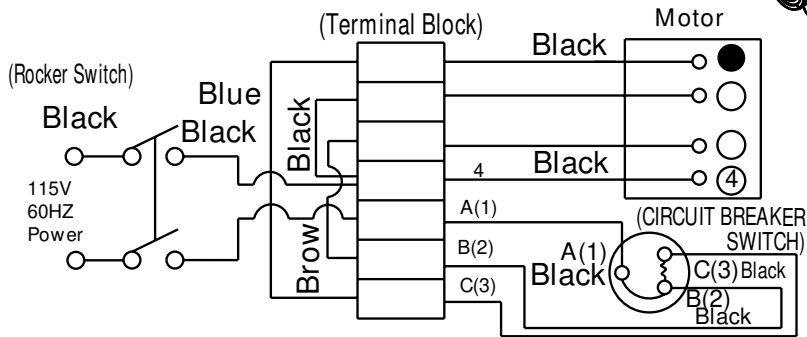
115V & 230V Wire Wirding



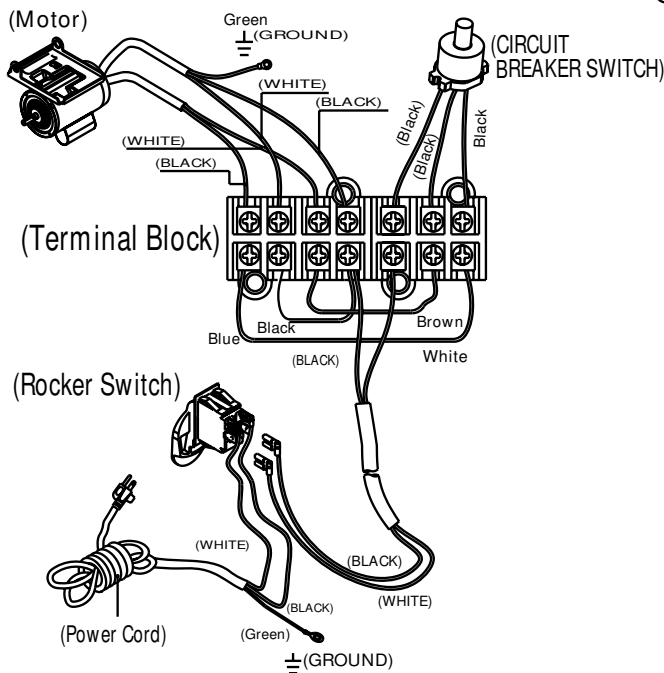
230V Wire Wirding



230V Wire Wirding



115V Wire Wirding



115V Wire Wirding

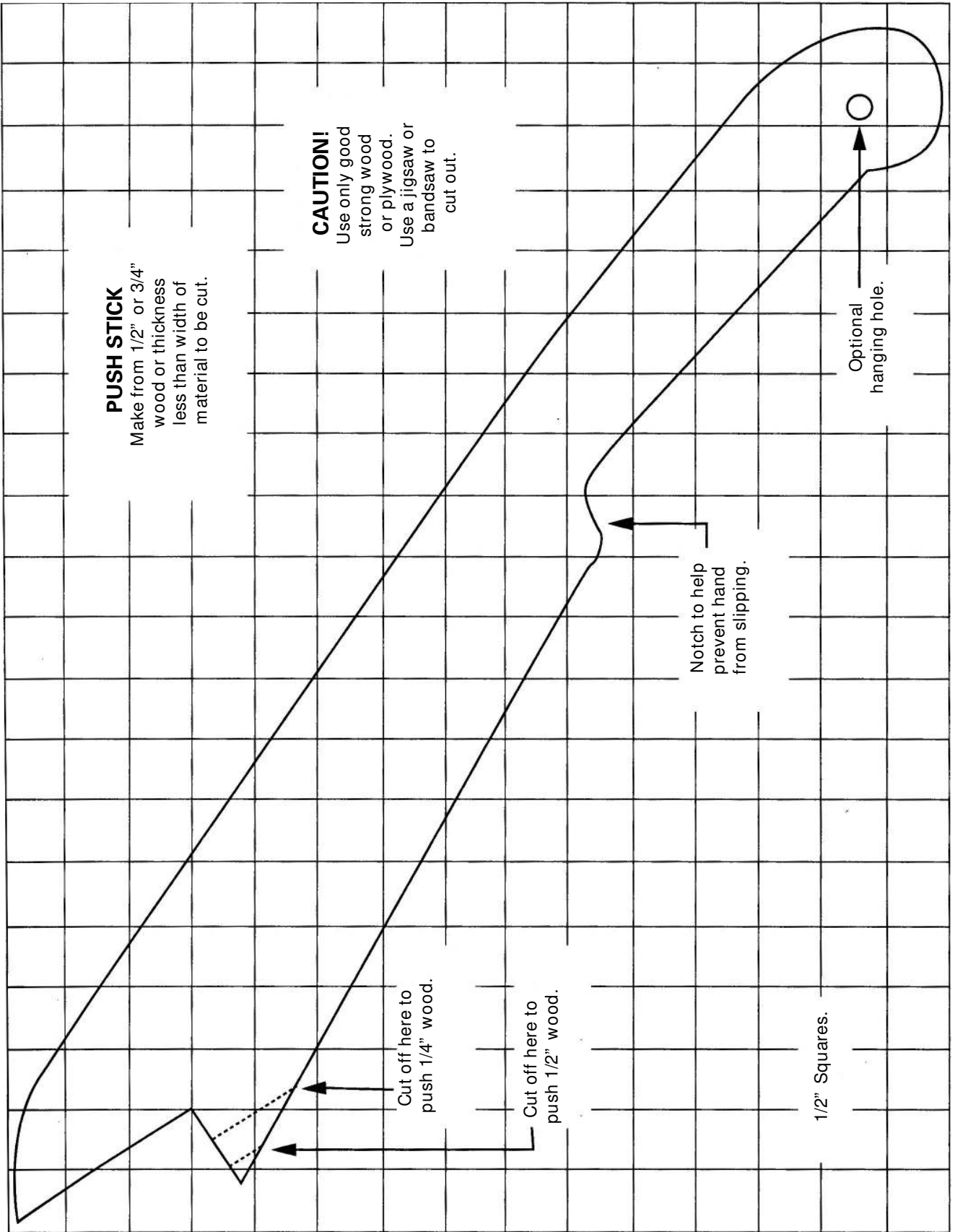
TROUBLESHOOTING GUIDE

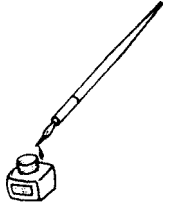
⚠ WARNING

To avoid injury from an accidental start, turn the switch OFF and always remove the plug from the power source before making any adjustments.

- Consult Hitachi Authorized Service Center if for any reason the motor will not run.

SYMPTOM	POSSIBLE CAUSES	CORRECTIVE ACTION
Saw will not start	<ol style="list-style-type: none"> 1. Saw not plugged in 2. Fuse blown or circuit breaker tripped 3. Cord damaged 	<ol style="list-style-type: none"> 1. Plug in saw 2. Replace fuse or reset circuit breaker 3. Have cord replaced by Hitachi Authorized Service Center
Does not make accurate 45° and 90° rip cuts	<ol style="list-style-type: none"> 1. Positive stop not adjusted correctly 2. Tilt angle pointer not set accurately 	<ol style="list-style-type: none"> 1. Check blade with square and adjust positive stop 2. Check blade with square and adjust to zero
Material pinched blade when ripping	<ol style="list-style-type: none"> 1. Rip fence not aligned with blade 2. Warped wood, edge against fence is not straight 	<ol style="list-style-type: none"> 1. Check and adjust rip fence 2. Select another piece of wood
Material binds on splitter	<ol style="list-style-type: none"> 1. Splitter not aligned correctly with blade 	<ol style="list-style-type: none"> 1. Check and align splitter with blade
Saw makes unsatisfactory cuts	<ol style="list-style-type: none"> 1. Dull blade 2. Blade mounted backwards 3. Gum or pitch on blade 4. Incorrect blade for work being done 5. Gum or pitch on blade causing erratic feed 	<ol style="list-style-type: none"> 1. Replace blade 2. Turn the blade around 3. Remove blade and clean with turpentine and coarse steel wool 4. Change the blade 5. Clean table with turpentine and steel wool
Material kicked back from blade	<ol style="list-style-type: none"> 1. Rip fence out of adjustment 2. Splitter not aligned with blade 3. Feeding stock without rip fence 4. Splitter not in place 5. Dull blade 6. The operator letting go of material before it is past saw blade 7. Miter/bevel angle lock knob is not tight 	<ol style="list-style-type: none"> 1. Align rip fence with miter gauge slot 2. Align splitter with blade 3. Install and use rip fence 4. Install and use splitter (with guard) 5. Replace blade 6. Push material all the way past saw blade before releasing work 7. Tighten knob
Blade does not raise or tilt freely	<ol style="list-style-type: none"> 1. Sawdust and dirt in raising and tilting mechanisms 	<ol style="list-style-type: none"> 1. Brush or blow out loose dust and dirt
Blade does not come up to speed	<ol style="list-style-type: none"> 1. Extension cord too light or too long 2. Low house voltage 	<ol style="list-style-type: none"> 1. Replace with adequate size cord 2. Contact your electric company
Machine vibrates excessively	<ol style="list-style-type: none"> 1. Saw not mounted securely to workbench 2. Bench on uneven floor 3. Damaged saw blade 	<ol style="list-style-type: none"> 1. Tighten all mounting hardware 2. Reposition on flat level surface Fasten to floor if necessary 3. Replace blade
Does not make accurate 45° and 90° cross cuts	<ol style="list-style-type: none"> 1. Miter gauge out of adjustment 	<ol style="list-style-type: none"> 1. Adjust miter gauge





PARTS LIST

10" STATIONARY TABLE SAW

MODEL NO. C10FL

Always order by I.D. Number

PARTS LIST FOR SCHEMATIC A

I.D.	Description	Size	Qty	I.D.	Description	Size	Qty	I.D.	Description	Size	Qty
1550	CR. RECOUNT HD. TAPPING SCREW	M4*16-16	2	OKC8	CR. RE. TRUSS HD. TAPPING SCREW	M4*16-16	2	238S	POINTER		1
2372	TABLE		1	OKC8	CR. RE. TRUSS HD. TAPPING SCREW	M4*16-16	6	238T	ROLLING WHEEL		2
2374	BODY		1	OKCX	CR. RE. PAN HD PLAIN WASHER TAPPING SCREW	M5*0.8-10	4	238V	WORM		1
2376	HEIGHT LEVER SEAT		1	OKFG	CR. RE. PAN HD. SCREW	M5*0.8-12	4	239F	RAIL		2
2378	CUTTER SHAFT		1	OKK9	SLOTTED PAN HD. SCREW	M6*1.-20	2	239G	LINK PLATE		1
2379	INSERT		1	OKL1	CR. RE. PAN HD. ROUND NECK SCREW	M6*1.0-12	2	239H	SIDE COVER(LEFT)		1
2389	WHEEL		1	OKMS	HEX. NUT	M6*1.0 T=5	2	239J	SIDE COVER(RIGHT)		1
2390	COMPRESSION SPRING		1	OKMU	HEX. NUT	M10*1.5 T=8	1	239K	RAIL (LEFT)		1
2552	HANDLE		1	OKMW	HEX. NUT	M10*1.5 T=4	1	239L	LINK PLATE(BACK)		1
09HZ	SPINDLE PULLEY		1	OKMY	HEX. NUT	M8*1.25, AT=6.5	2	239M	SIDE COVER(LEFT)		1
09HZ	SPINDLE PULLEY		1	OKN3	HEX. NUT	M16*1.25, AT=10	1	239N	SIDE COVER(RIGHT)		1
09JK	WRENCH HEX.		1	OKNV	HEX. NUT	5/8*18UNF T=8	2	23B9	RAIL (RIGHT)		1
OBAC	SET NUT		1	OKQF	CROWN NUT	M8*1.25, AT=18	2	23BA	SCREW	M6*1.0	2
OBAC	ARBOR COLLAR		1	OKQP	SQUARE NUT	M8*1.25, T=6.5	6	23C4	FLAT WASHER		3
0BB2	PARRLE RING		1	OKQW	NUT CHUCK	M5*0.8 T=5	2	23C5	SHAFT		1
0BB2	PARRLE RING		1	OKQX	NUT CHUCK	M6*1.0 T=6	2	23C6	TORSION SPRING		1
ODMP	SPECIAL BOLT		1	OKR1	NUT CHUCK	M16*2.0 T=16	1	23CA	LOCKING ROD		1
OGD0	BLADE		1	OKR1	NUT CHUCK	M16*2.0 T=16	1	23CN	HEX. SOCKET HD. CAP SCREWS	M6*1.0-40	4
OHVX	BALL BEARING		2	OKR1	NUT CHUCK	M16*2.0 T=16	1	23KE	HEX. NUT	M16*1.25, T=7	1
OJ4K	FLAT WASHER		8	OKSC	STRAIN RELIEF		1	23KS	BALL BEARING		2
OJ4N	FLAT WASHER		1	OKTA	STRAIN RELIEF		2	253M	RETAINING CLIP		2
OJ4N	FLAT WASHER		1	OKTA	STRAIN RELIEF		3	253T	DUST PLATE		1
OJ4N	FLAT WASHER		1	OLMK	LOCKING CABLE TIE		5	255V	WASHER		1
OJ69	FLAT WASHER		1	OQGR	COMPRESSION SPRING		1	25JY	SWITCH MOUNTING		1
OJAF	EXTERNAL TOOTH LOCK WASHER		4	OR25	COLLAR		1	25MZ	SWITCH BOX		1
OJC9	SPRING PIN		1	OSTF	PARRLE RING ASS'Y		1	25S2	CIRCUIT BREAKER SWITCH		1
OJCH	SPRING PIN		1	10LB	BOLT CLAMP		1	25VD	POWER CABLE		1
OJG5	PARALLEL KEY		2	10LE	CR. RE. TRUSS HD. ROUND NECK SCREW	M5*0.8-16	2	26MP	REAR BRACKET		2
OJH7	V-BELT		1	145M	SPRING PIN		1	26PT	COMPRESSION SPRING		1
OJP3	HEX. HD. BOLT	M8*1.25-12	2	145M	SPRING PIN		1	26PV	CONNECTOR BOX		1
OJPU	HEX. HD. BOLT	M8*1.25-20	4	151G	O-RING ROD		2	26QL	CONNECTOR BOX COVER		1
OJUB	HEX. SOC. HD. CAP BOLT	M5*0.8-12	2	OK4A	CR. RE. PAN HD. SCREW & WASHER	M5*0.8-20	2	26VG	WIRE CONNECTOR		1
OJV3	HEX. SOC. HD. CAP BOLT	M10*1.5-20	2	22HS	MOTOR ASS'Y		1	26VH	WIRE CONNECTOR		1
OJV5	HEX. SOC. HD. CAP BOLT	M10*1.5-35	4	22VD	PARALLEL PIN		1	26WW	CONNECTOR BOX COVER		1
OJX7	HEX. SOC. SET SCREW	M6*1.0-6	2	22VF	SLEEVE		1	26Y4	LEAD WIRE ASS'Y		1
OJX7	HEX. SOC. SET SCREW	M6*1.0-6	2	22VT	EXTENTION WING		1	26YD	LEAD WIRE ASS'Y		1
OJZ4	HEX. SOC. SET SCREW	M6*1.0-8	2	22VT	EXTENTION WING		1	26YE	LEAD WIRE ASS'Y		1
OK05	HEX. SOC. TRUSS HD. SCREW	M8*1.25-20	4	237E	BODY SHELL		1	26YF	LEAD WIRE ASS'Y		1
OK05	HEX. SOC. TRUSS HD. SCREW	M8*1.25-20	4	237F	BEVEL GEAR		1	27G2	INSERT		1
OK0T	HEX. HD. SCREW AND WASHER	M8*1.25-20	4	237G	REINFORCE PLATE		1	27G7	INSERT(DADO)		1
OK10	HEX. HD. SCREW AND WASHER	M8*1.25-30	1	237L	LOCK HANDLE		1	27GA	HANDLE		1
OK17	HEX. HD. SCREW AND WASHER	M8*1.25-20	1	237N	CENTER SHAFT		1	27GA	HANDLE		1
OK19	HEX. HD. SCREW AND WASHER	M10X1.5-25	6	237P	HEIGHT REGULATER BOLT		1	27YV	HEX. SOC. HD. CAP BOLT	M10*1.5-55	1
OK2C	HEX. SOCKET HD. CAP SCREWS	M8X1.25-16	6	237Q	CENTER SHAFT		1	28DW	ANCHOR BLOCK		2
OK3X	CR. RE. PAN HD. SCREW & WASHER	M5X0.8-14	2	237T	SET PLATE		2	28DX	WORM		1
OK3X	CR. RE. PAN HD. SCREW & WASHER	M5X0.8-14	4	237U	COVER		1	28DY	BEVEL GEAR		1
OK56	CR. RE. COUNT HD. SCREW	M5*0.8-12	4	237V	DUST GUARD		1	28DY	BEVEL GEAR		1
OK61	CR. RE. COUNT HD. SCREW	M5*0.8-12	1	237W	GUIDE BLOCK		1	28MS	BLADE GUARD ASS'Y		1
OK7F	CR. RE. ROUND WASHER HD. SCREW	M5*0.8-8	4	237X	SPONGE		4	28MY	RIP FENCE ASS'Y		1
OK7G	CR. RE. ROUND WASHER HD. SCREW	M5*0.8-12	4	237Y	WHEEL		1	28NO	MITER GAUGE ASS'Y		1
OK9P	CR. RE. TRUSS HD. TAPPING SCREW	M6X14-12	12	237Z	SET PLATE		1	29E2	R OCKER S W ITCH		1
OK9P	CR. RE. TRUSS HD. TAPPING SCREW	M6X14-12	1	238D	RETAINING CLIP		1	28RA	SWITCH BOX COVER		1
OKA0	CR. RE. PAN HD. TAPPING SCREW	M5*12-20	2	238G	LOCATION SEAT		2	290V	SCALE		1
OKA0	CR. RE. PAN HD. TAPPING SCREW	M5*12-20	2	238K	ARM BRACKET		2	291D	BODY SHELL		1
OKAA	CR. RE. PAN HD. TAPPING SCREW	M5*12-16	1	238M	WASHER		1	291E	BODY SHELL		1
OKAA	CR. RE. PAN HD. TAPPING SCREW	M5*12-16	6	238R	COLLAR		1	291F	BODY SHELL		1
OJ6T	FLAT WASHER	M5*12-16	2	29N3	FLAT WASHER		2	293H	PUSH BLOCK		1

**10" STATONARY TABLE SAW
PARTS LIST FOR SCHEMATIC B**

MODEL NO. C10FL

I.D.	Description	Size	Qty	I.D.	Description	Size	Qty
2494	CAUTION LABEL		4	22V1	BRACKET		3
0CSE	POWER CORD CLAMP	#06	2	22V2	BOTTOM SUPPORT BRACKET		1
0J9C	SPRING WASHER		4	22V8	BRACKET	#06	2
0JBY	PARALLEL PIN		4	22V9	BRACKET	#06	2
0K0T	HEX. HD. SCREW AND WASHER	M8*1.25-20	4	22VA	PIVOT SUPPORT	#06	4
0K7F	CR. RE. ROUND WASHER HD. SCREW	M5*0.8-8	2	22VB	CUSHION	#06	3
0K7L	CR. RE. ROUND WASHER HD. SCREW	M6*1.0-16	2	22VC	UPPER SUPPORT		1
0KJ7	CAP HD. SQ.NECK BOLT	M8*1.25-16	36	22VK	UPPER SUPPORT		1
0KMY	HEX. NUT	M8*1.25, T=6.5	1	23A7	HEX. HD. BOLT	M8*1.25-60	4
0KPQ	HEX. NUT	3/8*16UNC T=8	4	23DR	DUST COLLECTOR	#06	1
0KQY	NUT CHUCK	M8*1.25, T=8	4	23L3	CASTER		4
0KRR	SERRATED TOOTHED HEXAGON FLANGE NUT	M8*1.25, T=7.5	36	27G6	CLAMP HANDLE	#06	4
10LF	HEX. NUT	M6*1.0, T=4	2	28HP	BRACKET		1
10LU	ADJUSTABLE FOOT		1	28QJ	UPPER SUPPORT		1
22V0	UPPER SUPPORT		1	291W	RETAINING CLIP	#06	2

Issued by

 **Hitachi Koki Co., Ltd.**

Shinagawa Intercity Tower A, 15-1, Konan 2-chome,
Minato-ku, Tokyo 108-6020, Japan

Distributed by

 **Hitachi Koki U.S.A., Ltd.**

3950 Steve Reynolds Blvd.
Norcross, GA 30093

 **Hitachi Koki Canada Co.**

6395 Kestrel Road
Mississauga ON L5T 1Z5