

Solar Flood Light - 1100Lm, 10W



new flexible designed lamp that can be used separately or be connectd to a solar panel.



Comes with different working modes and options for outdoor and indoor applications. Can be charged by solar or USB.



It is simple and convenient to adjust without any tools required.



Multifunctional with Four-in-One design.



Double-sided solar panel for efficient and reliable charging in any weather.



USB interface design can be charged and discharged via USB, can be used as a power bank.



PIR sensor with different working modes.

10W

Power

IP65

Waterproof

1100

Lumens

2 Years

Warranty (Battery - 1 Year)

90°

Beam Angle

Specifications

▶ **Product Model**

LD-SFL-10W Twinspad-PIR

▶ **Power**

10W

▶ **Solar Panel**

6.5W+6.5W Mono-crystalline silicon (double sided charging)

▶ **Beam Angle**

90°

▶ **Fixture Color**

Black

▶ **IP Class**

Ip65

▶ **Solar Panel Size**

345mm x 236mm x 45mm

▶ **Installation Height**

Less than 5 meters

▶ **Solar Panel Cable**

3 meters long

▶ **Lumens**

1100Lm

▶ **Battery**

7200mAh/3.7V 18650 Lithium battery replaceable

▶ **PIR Sensor Range**

Detection angle: 120° Detection area: ≤6 Meters

▶ **Working Temperature**

-20°C - 50°C

▶ **Material**

ABS+PC housing, Aluminum bracket, Anti-UV

▶ **LED Type**

SMD2835/55pcs

▶ **Colour Temperature**

3000K/4000K/6000K

▶ **Lamp Size**

232mm x 166mm x 34mm

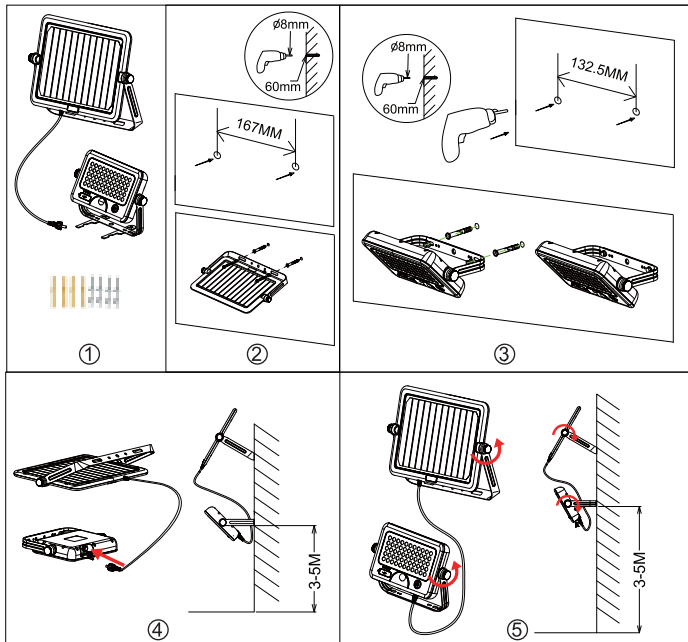
▶ **Warranty**

2 years (Battery - 1 year)



Installations

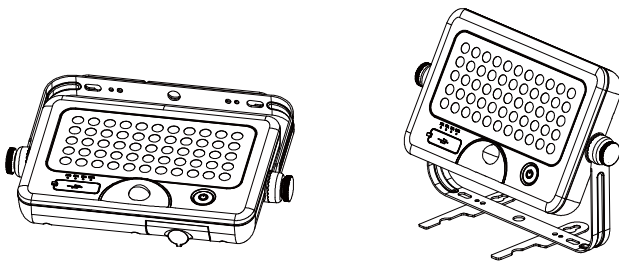
Installation A: Wall Mounted



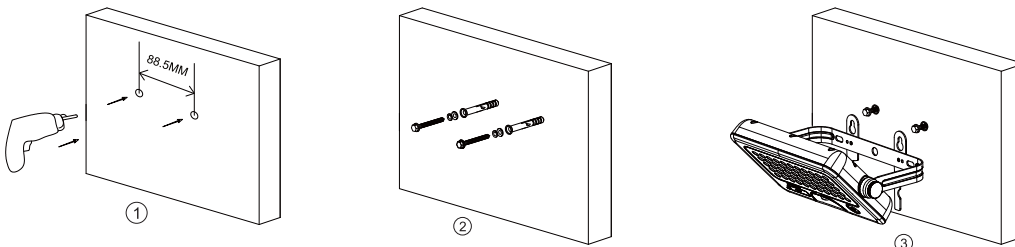
1. Check and prepare the lamp, accessories and tools
2. Drill 2 holes of 8mm with a depth of 60mm and a spacing in between of 167mm. Fix the solar panel onto the wall.
3. Drill 2 holes of 8mm with a depth of 60mm and a spacing in between of 132.5 mm. Fix the lamp onto the wall.
4. Open the silicone at the bottom of the lamp. Connect the wire of the solar panel to the lamp and fasten it tightly.
5. Adjust the solar panel and lamp to the correct position according to the local latitude and lighting direction. Turn on the lamp.

Installation B: Put on flat surface directly

Push aside the stand bracket and put it on a flat surface.



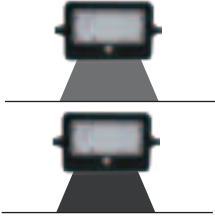
Installation C: Hang on the wall



1. Drill 2 holes of 8mm in the wall with a spacing of 88.5mm.
 2. Fix the expansion plugs and screws into the holes with some space to spare. (Do not screw all the way to the bottom).
 3. Push aside the stand bracket, align the hanging holes on the bracket with the screws and hang the lamp on the wall.
- * The recommended hanging height is less than 2m

Working Modes

Mode A: Constant Lighting Mode (Lamp NOT connected with solar panel)



"In this working mode, the PIR sensor & Photocell control will not work.

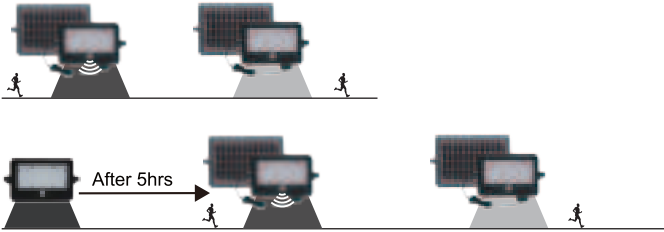
Mode A1: Press * 1st time, the light will turn on to 30% constant brightness


Mode A2: Press * a 2nd time, the light turns on to 100% constant brightness.

Mode A3: Press * a 3rd time to turn off the light

Mode B: Sensor Mode (Lamp connected with solar panel)

In this working mode, the lamp will automatically turn on at night and turn off again in day time.



Mode B1: Press  1st time, automatically turns on to 100% brightness (1100lm) when motion is detected in range $\leq 6m$ and then turns to 5% brightness in 20 seconds of no motion.

Mode B2: Press  2nd time, automatically turns on & remain 100% brightness (1100lm) for 5hrs. After 5hrs or when battery capacity is less than 30%, it turns to Mode B1.

Mode B3: Press  3rd time, it turns off.

Additional Power Bank Function



USB Output: 5.0V/1.0A
DC-Micro Input: 5.0V/1.0A
Indicator of Battery Capacity:
25%, 50%, 75%, 100%.

