

QUICK START GUIDE

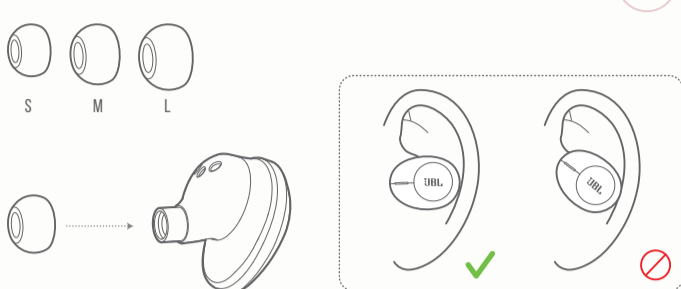
TUNE125TWS



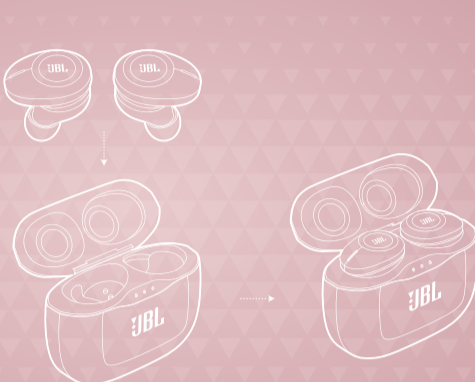
WHAT'S IN THE BOX



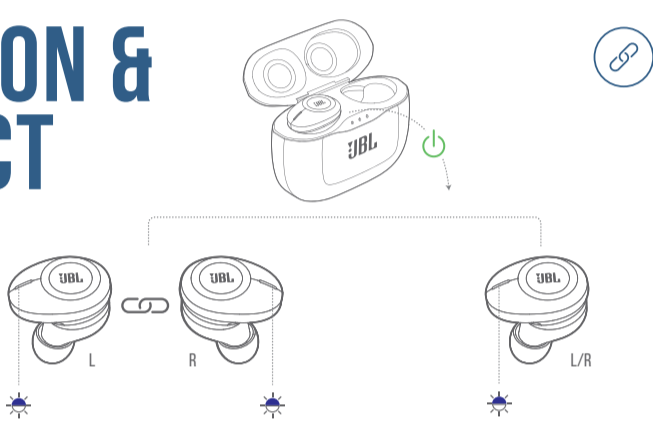
HOW TO WEAR



FIRST TIME USE



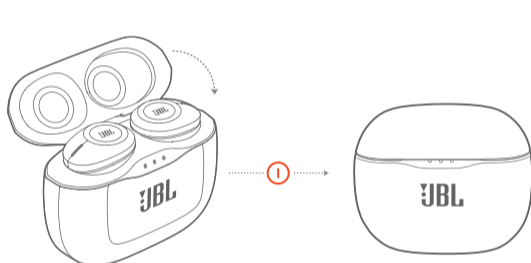
POWER ON & CONNECT



PAIRING

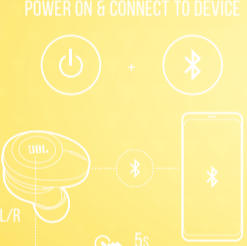


POWER OFF

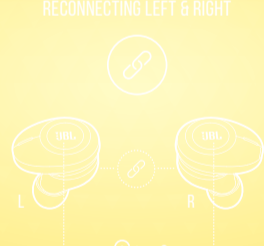


MANUAL CONTROLS

POWER ON & CONNECT TO DEVICE



RECONNECTING LEFT & RIGHT



POWER ON

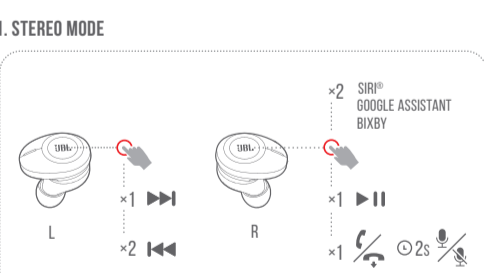


POWER OFF

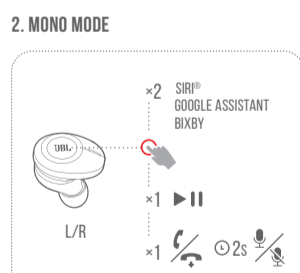


BUTTON COMMAND

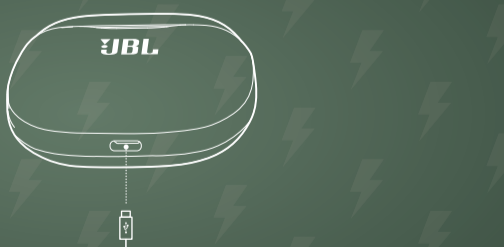
1. STEREO MODE



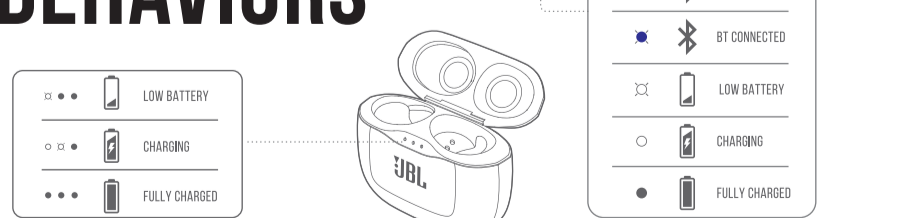
2. MONO MODE



CHARGING



LED BEHAVIORS



TECH SPEC

Driver size:	5.8 mm Dynamic driver
Frequency response:	20 Hz – 20 kHz
Sensitivity:	96 dB SPL @ 1 kHz 1 mW
Maximum SPL:	96 dB
Microphone sensitivity:	-38 dBV / Pa @ 1 kHz
Impedance:	14 ohm
Bluetooth transmitted power:	< 12 dBm
Bluetooth modulation:	GFSK, π/4 DQPSK, 8DPSK
Bluetooth frequency:	2.402 GHz - 2.480 GHz
Bluetooth profile version:	A2DP 1.3, AVRCP 1.5, HFP V1.7
Bluetooth version:	5.0
Headset battery type:	Lithium-ion battery (85 mAh / 3.7 V DC)
Charging case battery type:	Lithium-ion battery (850 mAh / 3.7 V DC)
Power supply:	5 V ~ 1.0 A
Charging time (headset & charging case):	< 2 hrs from empty
Music playtime with BT on:	8 hrs
Weight:	73 g

