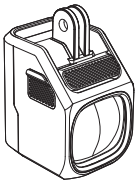


MAGICSHINE



APP PAIRING NAME: M2-B0 EVO_1700SD

EVO 1700SD

USER MANUAL



⚠ WARNING!

1. To prevent inadvertent switching on, please keep the light unit in lockout mode before transport or storage.
2. DO NOT disassemble, modify, remanufacture, puncture, or damage the device or batteries.



IN THE BOX



EVO 1700SD



Tether

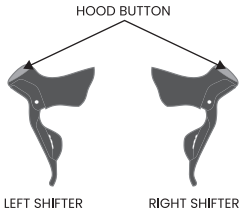


USB-C charging cable

START GUIDE

- Thanks to its lightning-fast, accurate, and reliable shifting performance, SHIMANO Di2 system puts riders in complete control and ensures a seamless interface between the cyclist and bike like never before.
- SHIMANO D-FLY is a Near Field Network that makes your cycling life richer and more attractive by wirelessly connecting SHIMANO's electronics components to your smartphone or compatible cycle computers.

SHIMANO SHIFTERS OVERVIEW



SHIMANO SHIFTERS OPERATING INSTRUCTIONS

Note:

1. Before pairing, ensure your SHIMANO Di2 system has at least two unassigned buttons available to fully utilize product features.
2. Position the light within 30 centimeters of the SHIMANO Di2 rear derailleur when pairing.
3. After successful pairing, the SHIMANO Di2 system stays connected with the light for 48 hours, even when the light is turned off. If the light is turned off for more than 48 hours without any operation, re-pair the SHIMANO shifters with the light for normal use.
4. SHIMANO D-FLY allows custom channel settings, ensuring that the left and right shift lever channels are not set to the same.

SHIMANO D-FLY CHANNELS 1/3: Click the SHIMANO shifter to change brightness levels. Double click to change between low beam and high beam.

SHIMANO D-FLY CHANNELS 2/4: Click the SHIMANO shifter to activate full brightness in high beam. Double click to enter flash mode and change between Night Flash and Day Flash.

5. If the light fails to connect to the SHIMANO Di2 system, download the E-TUBE App and follow these steps:

Register and log in to the E-TUBE App. Turn on the light and ensure successful pairing. Go to "Wireless Settings" -> "Wireless Communication" and select "ANT+Bluetooth® LE" or "Bluetooth® LE," then click "Apply."

PAIRING GUIDE

INITIAL PAIRING: Single click the left or right hood button on the shifter to activate the SHIMANO Di2 system, then long press the light button for 1 second until the indicator flashes blue to enter pairing mode. The indicator is constantly blue for 3 seconds, confirming a successful pairing.

PAIRING FAILURE: If pairing fails within 5 minutes, the indicator will switch to display the current battery level.

CLEAR PAIRING: When the light is off, press and hold the light button for 5 seconds to activate lockout mode. Then, long press the button again until the indicator changes from flashing red to flashing blue, indicating that the pairing is successfully cleared.

OPERATION GUIDE

ON/OFF: Press and hold the left or right hood button on the shifter for 1 second to turn the light on/off.

CHECK BATTERY LEVEL: When the light is off, click the left or right hood button on the shifter to display the light's remaining battery level.

THE HOOD BUTTON ON THE LEFT SHIFTER: Click the left hood button to change brightness level. The output brightness will cycle through Low→Medium→High→Low...Double click to change between low beam and high beam.

THE HOOD BUTTON ON THE RIGHT SHIFTER: Click the right hood button to activate maximum output. The light will enter the High brightness of high beam mode. Double click to enter flash mode and cycle through Night Flash→Day Flash→Night Flash...

To operate the light with other Di2 buttons, adjust the settings via SHIMANO's E-TUBE App. For more details, please refer to SHIMANO's E-TUBE App operating instructions.

LIGHT BUTTON OPERATING INSTRUCTIONS

ON/OFF: Press and hold the button for 1 second to turn the light on/off. (Please set the light to the lock mode if not used for a long time)

ADJUST BRIGHTNESS: When the light is on, click the button to change brightness level. The output brightness will cycle through Low→Medium→High→Low...

CHANGE MODE: Double click the button to change between low beam and high beam. (Note: The flash mode can only be accessed by double-clicking the right hood button on the shifter.)

CHECK BATTERY LEVEL: Click the button to display the remaining battery level.

LOCK/UNLOCK: When the light is off, press and hold the button for 3 seconds to enter lockout mode. To unlock the light, press and hold the button again for 3 seconds or charge the light. (Note: After unlocking the light, reconnect it to the SHIMANO Di2 system to enable control.)

CHARGING / BATTERY INDICATOR

Standard charging time approx. 5 hours (5V 1A)

Charging: Flashing red

Fully charged: Constant green



BATTERY INDICATOR

When the light is off, click the button to display the remaining battery level for 3 seconds.

100%-21%: Constant green

20%-11%: Constant red

10%-1%: Flashing red

OUTPUT / RUNTIME

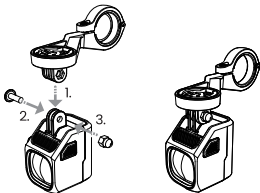
LOW BEAM	LOW	200LM	11H
	MEDIUM	400LM	5.5H
	HIGH	800LM	3H
HIGH BEAM	LOW	400LM	6H
	MEDIUM	800LM	3H
	HIGH	1700LM	2H
FLASH MODE	NIGHT FLASH	400~1700LM	3.5H
	DAY FLASH	0~1700LM	5H

*All data are measured in accordance with ANSI/NEMA FL 1-2009. The test was conducted at a temperature of 25°C and a wind speed of 25 km/h. The runtime may vary depending on external temperature and ventilation conditions, and these deviations may affect the result of testing.

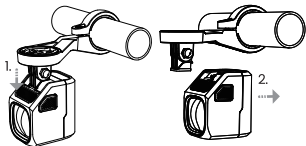
HOW TO INSTALL/REMOVE

Note: The handlebar out-front mount is sold separately.

1. INSTALL THE OUT-FRONT MOUNT



2. REMOVE THE OUT-FRONT MOUNT

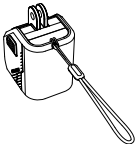


3. ATTACH THE TETHER

1.



2.



3.



4.

