

The following upgrade guide is in relation to updating the firmware by copying an update file to the SD card via the supplied USB cable.

1

Download the latest version of firmware for the NBDVR122HD via the Support & Downloads page for your Dash Cam.

2

The firmware update will be saved to your PC as a file called 'FW122HDA. This will usually be located within the downloads folder on your computer.

Note: You won't be able to open this file on your computer.



Windows

[Download Here](#)



FWXXXX.bin



Mac

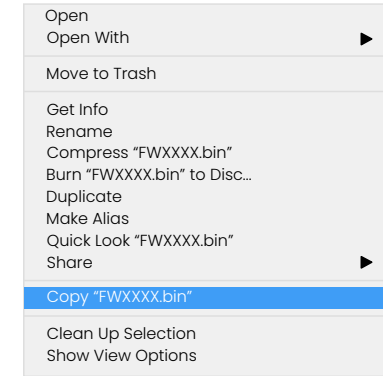
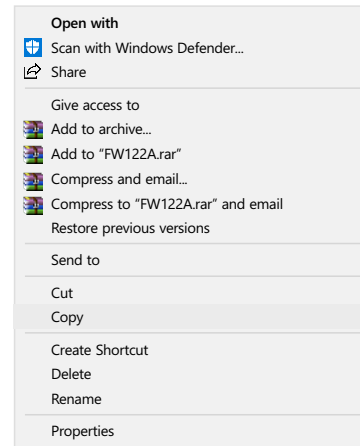
[Download Here](#)



FWXXXX.bin

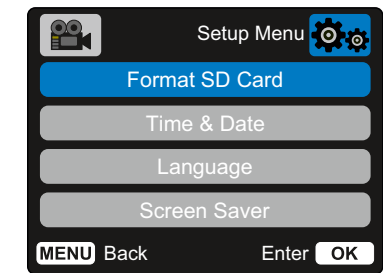
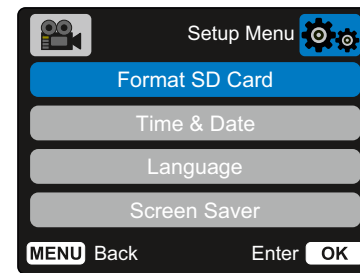
3

Right click (CMD & click if using a mac) on the bin file inside the downloads folder and select the option that says 'Copy'.



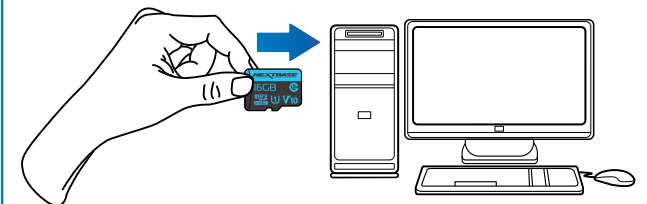
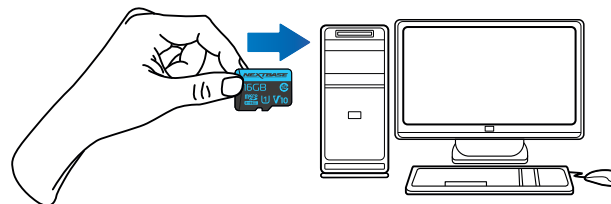
4

Go to the Dash Cam Setup Menu (Press the Menu button twice when the camera is not recording) and select the option that says 'Format SD Card', press the 'OK' button to confirm.



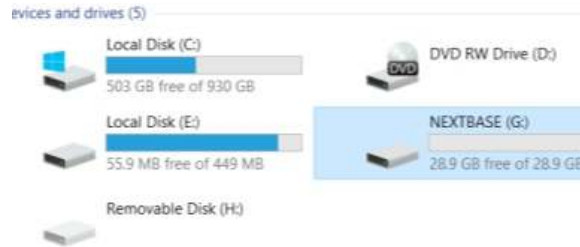
5

Turn off the Dash Cam and remove the SD card. Insert the SD Card into your computer using an SD Card Reader.



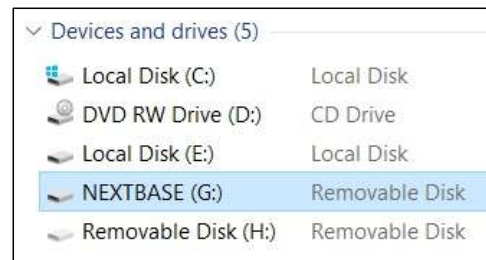
6

The Dash Cam should appear as a storage device called 'NEXTBASE' within File Explorer (Windows) or Finder (Mac).



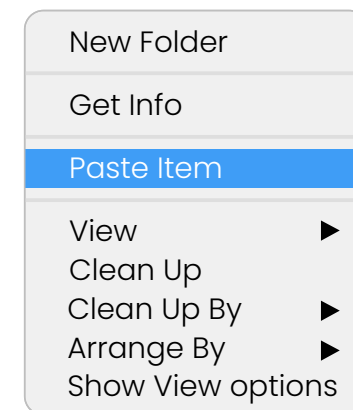
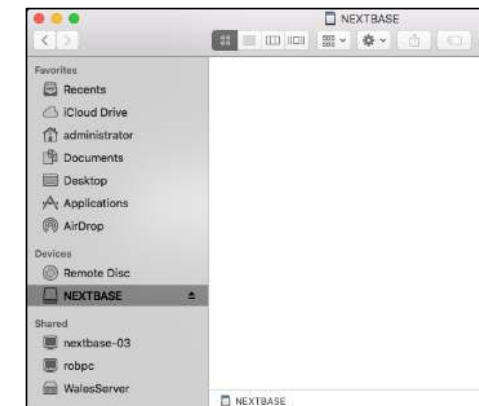
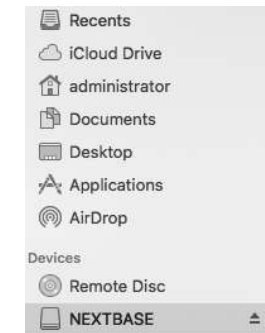
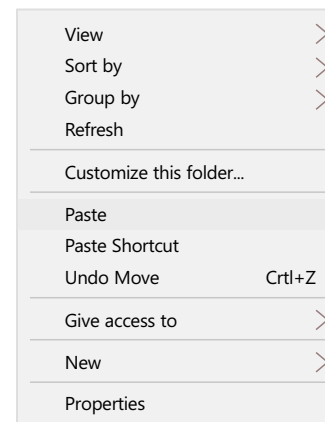
7

Click on your SD card as it appears within File Explorer/Finder to view the contents of the card.



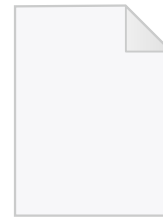
8

Once the contents of the card are displayed, right click in the white space and select the option that says 'Paste'. This will copy the file from your downloaded zip file and place it onto the SD card where it can be read by the Dash Cam



9

Please ensure that the bin file is NOT renamed in anyway, the update will fail if the file appears as FW122HDA(1).bin, for example.



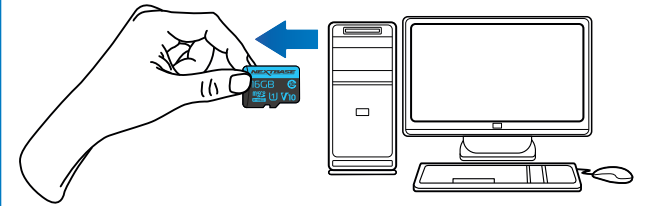
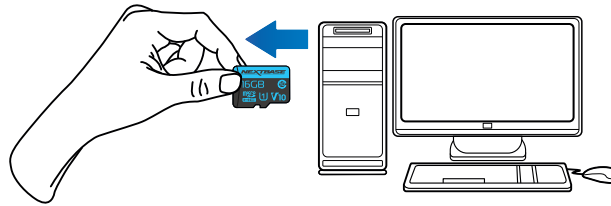
FWXXX.bin



FWXXX.bin

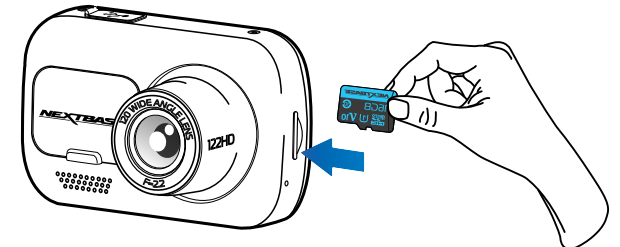
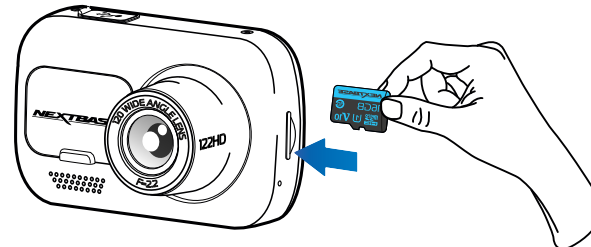
10

Once you have copied 'FW122HDA.bin' to the SD Card you can now remove it from your computer.



11

With the Dash Cam turned off insert the SD Card into the Dash Cam until it clicks into place.



12

After the Dash Cam has shut down completely, plug it back into your PC and select 'Power On'. The update should begin automatically.

13

After the update has installed your Dash Cam will restart and display the PC Connection Screen. Select the 'Power On' option using the 'OK' button to continue.

14

After the Dash Cam has restarted open the Setup Menu (by pressing the 'Menu' button twice) and scroll down to 'System Info'. Press the 'OK' button to select this option and the Firmware version will be displayed.

