

# T-Series Vertical Splice Kit, 16 mm, #5, 15M

## 物料号

### RBT5101



T-Series splice kits contain the following: Sleeve, filler material kit (filler material, packing, pouring basin ceramic insert and disk, pouring basin ceramic guide tube), pouring basin and pouring basin crucible. Splice kits are ordered based on the quantity of splices needed. Sleeves and filler material kits are one-time use parts. Pouring basins and crucibles are prorated based on their anticipated life. Ordering splice kits simplifies ordering, reduces order errors and helps ensure proper sizing of components. Kits can be ordered with longer (extended) sleeves for use when the reinforcing steel deformation pattern or spacing does not meet the minimum product specifications.

## 功能

Simplifies ordering

Used to splice the same diameter bars

Available with extended sleeve lengths

## 产品属性

Sleeve: Standard Length

Rebar Size, Metric: 16 mm

Rebar Size, US: #5

Rebar Size, Canada: 15M

Length 1 (L1): 349 mm

Length 2 (L2): 51 mm

Height 1 (H1): 641mm

Height 2 (H2): 451mm

Height 3 (H3): 191mm

Height 4 (H4): 197mm

Diameter (Ø): 102 mm

## **ADDITIONAL PRODUCT DETAILS**

---

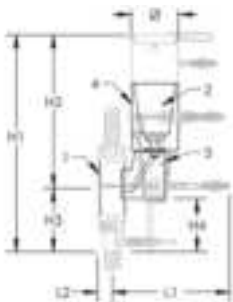
Prior to installation, please read and understand all of the detailed instructions and safety notices provided in the nVent LENTON Cadweld Rebar Splicing System instruction manual.

All dimensions are for reference only.

Components can also be purchased separately: (1) Sleeve, (2) Filler Material Kit (filler material, packing, pouring basin ceramic insert and disk, pouring basin ceramic guide tube), (3) Pouring Basin, and (4) Pouring Basin Crucible.

Splice Kit Components							
两通套件	Filler Material	Packing (2 Required)	Pouring Basin Ceramic Insert and Disk	Pouring Basin Ceramic Guide Tube	螺钉套	Pouring Basin	Pouring Basin Crucible
RBT4101	RBF40	RBS354710 RBS35475	RBS5037	RBS5038	RBT5101A	RBWS1500U	RBWS22774
RBT5101	RBF40	RBS354710 RBS35475	RBS5037	RBS5038	RBT5101A	RBWS1500U	RBWS22774
RBT6101	RBF50	RBS35473.5 RBS35477	RBS5037	RBS5038	RBT6101A	RBWS1500X	RBWS22774
RBT7101	RBF50	RBS35474 RBS35478	RBS5037	RBS5038	RBT7101A	RBWS1500A	RBWS22774
RBT8101	RBF55	RBS354710 RBS35475	RBS5037	RBS5038	RBT8101A	RBWS1500C	RBWS22774
RBT9101	RBF80	RBS354711 RBS35475.5	RBS5037	RBS5038	RBT9101A	RBWS1500D	RBWS22774
RBT91011	RBF90	RBS354711 RBS35475.5	RBS5037	RBS5038	RBT91011A	RBWS1499D	RBWS22775
RBT91012	RBF105	RBS354711 RBS35475.5	RBS5037	RBS5038	RBT91012A	RBWS1500D	RBWS22775
RBT1091	RBF90	RBS354712 RBS35476	RBS5037	RBS5038	RBT1091A	RBWS1500E	RBWS22775
RBT10911	RBF105	RBS354712 RBS35476	RBS5037	RBS5038	RBT10911A	RBWS1500E	RBWS22775
RBT11101	RBF105	RBS354712 RBS35476	RBS5037	RBS5038	RBT11101A	RBWS1499F	RBWS22775
RBT111011	RBF125	RBS354712 RBS35476	RBS5037	RBS5038	RBT111011A	RBWS1481F	RBWS22776
RBT14101	RBF195	RBS354715 RBS35477	RBS5037	RBS5039	RBT14101A	RBWS1481J	RBWS22776
RBT1891	RBF270	RBS354720 RBS35479	RBS5037	RBS5039	RBT1891A	RBWS1482M	RBWS22777

图表



## 警告

应仅根据 nVent 的产品说明书与培训材料安装并使用 nVent 的产品。可访问 [www.nvent.com](http://www.nvent.com) 获取说明书，或者向您的 nVent 客服代表索取。错误安装、使用不当、滥用或未能完全遵守 nVent 的说明与警告，可能会造成产品故障、财产损失、严重的人身伤害及死亡和/或使得保修服务无效。

北美	欧洲	欧洲	APAC
+1.800.753.9221	Netherlands:	Germany:	Shanghai:
Option 1 - Customer	+31 800-0200135	800 1890272	+ 86 21 2412 1618/19
Care	France:	Other Countries:	Sydney:
Option 2 - Technical	+33 800 901 793	+31 13 5835404	+61 2 9751 8500
Support			



Our powerful portfolio of brands:

**CADDY ERICO HOFFMAN ILSCO SCHROFF TRACHTÉ**