

# PLWF004 饮水机-说明书-英文

---

尺寸: 130\*80 mm, 骑马钉, 公差 $\pm 0.1$ mm

材质: 128g铜版纸, 封面封底覆哑膜

印: C100 K90 印刷





PETLIBRO



Scan for more details  
[www.petlibro.com](http://www.petlibro.com)

## Rainbow Automatic Pet Water Fountain -1.5L Ceramics

**User Manual**

Model: PLWF004

©Libro Corp. All Rights Reserved.

Manufacturer: Shenzhen Libro Technology Co., Limited

Address: Building 3, Cloud Park, Shenzhen, China, 518129

JP Importer: 株式会社神州

CANICES-3(B)/NMB-3(B)

Made in China

PLWF004\_V1.1



This device complies with Part 15 of the FCC Rules. Operation is subject to the following two conditions: [1] this device may not cause harmful interference, and [2] this device must accept any interference received, including interference that may cause undesired operation.

Read this user manual before using the product,  
and keep it for future reference.

# CONTENTS

SAFETY PRECAUTIONS	- 01
WARRANTY	- 02
PRODUCT OVERVIEW	- 03
HOW TO USE	- 04
CARE INSTRUCTIONS	- 07
TROUBLESHOOTING	- 08
SPECIFICATIONS	- 09

## SAFETY PRECAUTIONS

### ! WARNING

- Dispose of all packaging materials properly. Keep the polybags away from children and pets as these bags could cause suffocation.
- Do NOT allow children to play with, in or around the pet water fountain.
- To avoid injury, please keep close supervision when the appliance is used near children.
- Do NOT use the water fountain with pets not able to reach the water tray or with any physical disability.
- Do NOT place any foreign object in the water tank.
- Do NOT disassemble the pet fountain other than components as instructed in this User Manual.
- Do NOT use the pet fountain for anything other than its intended use.
- Only use attachments recommended or sold by the manufacturer. The use of attachments not recommended or sold by the manufacturer may cause an unsafe condition. Do NOT modify the pet fountain.
- Do NOT operate any appliance if the unit is malfunctioning or has been damaged. Do not attempt repairs on the device yourself. Contact our customer service immediately for further instructions.
- Be sure to disconnect the power supply for safety when the appliance is not in use.
- Please disconnect the power supply before maintaining and cleaning the machine.
- Always unplug the appliance when not in use; or before putting on or taking off parts and before cleaning.
- The power adapter and wire plug must not be flooded during cleaning.
- This product is for indoor use only.
- This product is not allowed to run without water.
- Never pull the electrical power cord to remove the plug from the wall outlet.
- If the plug of this device gets wet, turn off the electricity of that wall outlet. Do NOT attempt to unplug.

- Check the device after installation. Do NOT plug in if there is water on the contact points or plug.
- To avoid tripping, always position the power cord out of the way of foot traffic.
- Do not use the appliance in the bathroom.
- Change the filter every 2 weeks or when the flow rate has noticeably reduced. For two or more cats, you may need to replace the filters more regularly if it becomes blocked.

### CAUTION

- Do NOT allow pets to chew on or swallow any parts. If you are concerned about the power cord, purchase a cord conduit (a hard-plastic protector) at any hardware store to protect the power cord.
- If an extension cord is necessary, one unit with a proper rating should be used.
- Do NOT install or store the pet water fountain where it will be exposed to weather or temperatures below 0°C / 40°F.
- Read and observe all important notices listed on the pet water fountain and in the packaging.
- **To avoid breakage or damage, be extra careful when handling ceramic objects.**

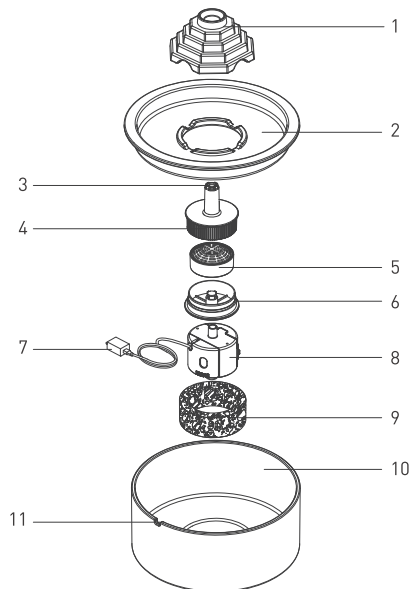
### WARRANTY

- 1-year warranty
- Lifetime support

For guidance on product use and warranty extension, please contact our brand after-sales staff via email: [support@petlibro.com](mailto:support@petlibro.com).

If any questions related to orders, please contact the seller through the shopping platform.

### PRODUCT OVERVIEW

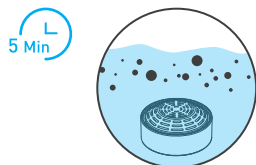


- |                      |                               |
|----------------------|-------------------------------|
| 1. Rainbow Top Cover | 7. Charger                    |
| 2. Drinking Area     | 8. Water pump with power cord |
| 3. Water Outlet      | 9. Pre-filter Sponge          |
| 4. Filter Box        | 10. Water Tank                |
| 5. Filter            | 11. Cord Slot                 |
| 6. Filter Box        |                               |

## HOW TO USE

### Step 1

Soak the filter in a clean bowl for 5 minutes.

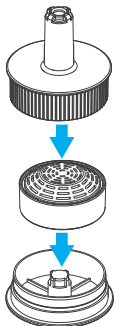


### Notes:

- 1) Fully soak the filter before turning on the appliance; otherwise, water may not flow through the filter smoothly and cause spillage.
- 2) Do not soak the filter in the water tank of the fountain in case of any surface dust.

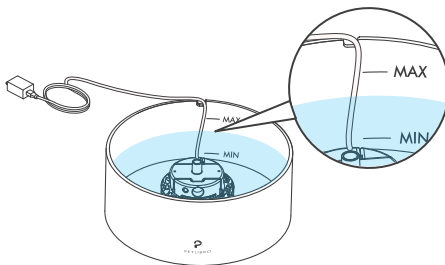
### Step 2

Put the filter in the filter box, and close the lid.



### Step 3

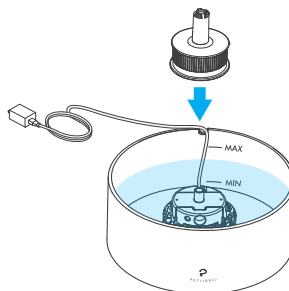
Fill the tank with water between "min" and "max". And then put the cord in the slot.



**Note:** To prevent spillage, do not add water above MAX level.

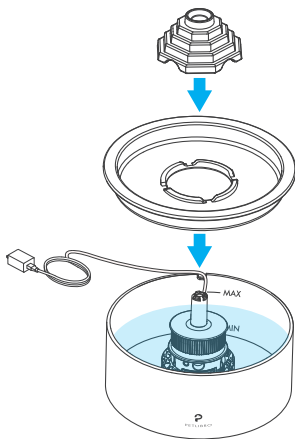
### Step 4

Install the filter box.



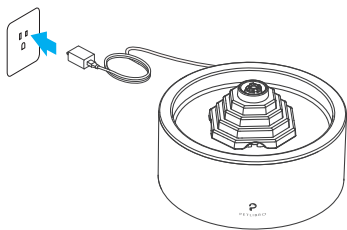
### Step 5

Put back the water tray and rainbow top cover to form a seal.



### Step 6

Connect the power adaptor.



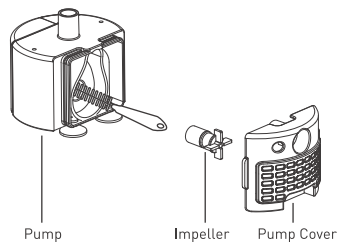
## CARE INSTRUCTIONS

### IMPORTANT:

In order to prevent the growth of bacteria, mold, and insects, for the health of pets, please replace the filter and pre-filter sponge every 2 weeks, and clean the pump and fountain every 2 weeks.

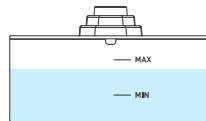
### Step 1

Take off the pump cover and impeller. Use the small brush provided to clean the parts with water.



### Step 2

Keep the water level higher than the minimum level. The pump will fail if it turns dry.



## TROUBLESHOOTING

Problem	Solution
Water keeps spilling out of the water tray.	The filter may not be fully soaked. Please soak the filter in a clean bowl (not in the water tank) for 5 minutes before the first use.
The pump stops working.	1) Fill in water between MIN and MAX. The pump will fail if it runs dry. 2) Clean the pump, water tank, and drinking basin. 3) If the above solutions don't work, please contact us at support@petlibro.com.
How often should I change the filters? Where to get them?	In order to prevent the growth of bacteria, mold, and insects, for the health of pets, please replace the filter and sponge every 2 weeks. To purchase new filters, please contact us at support@petlibro.com.
Why do I need to soak the filter before first use?	The filters absorb more water (and therefore clean more water) when they're wet and expanded. Soaking the filter removes particulate matter that may have settled on the filter.
Water output speed slows down.	For the first use (or reuse after long-time storage), the water pump needs to discharge air, it's normal if the water output speed slows down.

## SPECIFICATIONS

Model	PLWF004
Power Adapter	Input: 100-240V 50/60Hz Output: 5V/1A
Material	Ceramic
Water Tank Capacity	1.5 L
Dimensions	20 x 20 x 11cm / 7.9 x 7.9 x 4.3 inch
Net Weight	1.8kg / 63.5oz