



MasterClass InstantFit (UL Type- A) T8

13T8/MAS/48-835/IF20/P/DIM 10/1

The MasterClass InstantFit T8 lamps provide hassle-free installation with simple lamp-for-lamp replacements. They deliver what we promise, with at least 40% energy savings, flicker-free performance, and the life you would expect. Other lamps claim compatibility but only MasterClass InstantFit (UL Type A) has been proven to work with over 200 ballasts and drivers, delivering even light output, with proven energy savings and a long average lifetime. End users will be delighted being under these comfortable and high quality lamps with no visible flicker and optimized optics. Energy managers will enjoy these lamps too as they can count the savings delivered by our lamps. To enjoy more energy savings, the MasterClass InstantFit lamps can be paired with the Advance TLED drivers to create a Type C system. With available 70,000 hour life, 7-year limited warranty and a shatter-prevention polycarbonate lens, Philips MasterClass InstantFit TLED lamps deliver benefits for all.

Product data

General Information		Light Technical	
Cap-Base	G13 [Medium Bi-Pin Fluorescent]	Luminous Flux	2,000 lm
Nominal lifetime	70,000 hour(s)	Color Designation	White (WH)
Switching Cycle	50,000	Luminous Efficacy (rated) (Nom)	153 lm/W
Lighting Technology	LED	Correlated Color Temperature (Nom)	3500 K
		Color Consistency	<6
		Color rendering index (CRI)	80
		LLMF At End Of Nominal Lifetime (Nom)	70 %
Color Code	835 [CCT of 3500K]		
Beam Angle (Nom)	180 degree(s)		

MasterClass InstantFit (UL Type-A) T8

Operating and Electrical	
Line Frequency	20K to 120K Hz
Input Frequency	20K to 120K Hz
Power Consumption	13 W
Lamp Current (Max)	300 mA
Lamp Current (Min)	50 mA
Wattage Equivalent	32 W
Starting Time (Nom)	0.5 s
Warm-up time to 60% light	0.5 s
Power Factor (Fraction)	0.9
Voltage (Nom)	120-277,347 V
UL Type	UL Type A

Temperature	
Ambient temperature range	-20 °C to 45 °C
T-Case Maximum (Nom)	40 °C

Controls and Dimming	
Dimmable	Only with specific dimmers

Mechanical and Housing	
Bulb Finish	Frosted
Bulb Material	Plastic
Product Length	1,200 mm

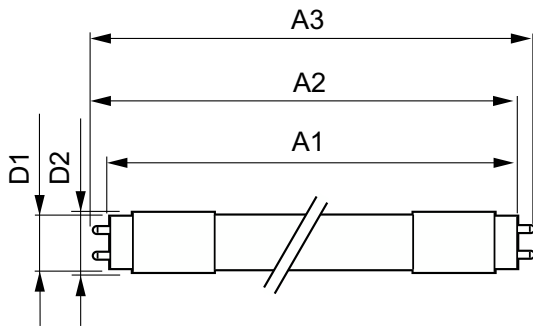
Bulb Shape	T8
------------	----

Approval and Application	
Energy Saving Product	Yes
Approval Marks	RoHS compliance UL certificate DLC compliance
Energy Consumption kWh/1000 h	- kWh
Energy Certifications	DLC Standard
EU RoHS compliant	Yes

Application Conditions	
can it be used in closed luminaires	Yes

Product Data	
Order product name	13T8/MAS/48-835/IF20/P/DIM 10/1
Full product name	13T8/MAS/48-835/IF20/P/DIM 10/1
Order code	473934
Material Nr. (12NC)	929001397734
Net Weight (Piece)	0.165 kg
EAN/UPC - Product/Case	046677473938
Numerator - Packs per outer box	10
EAN/UPC - Case	50046677473933

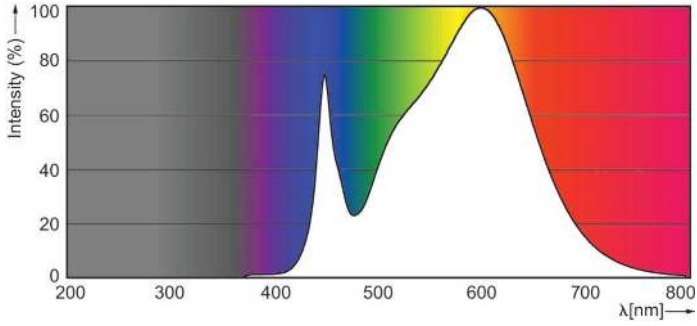
Dimensional drawing



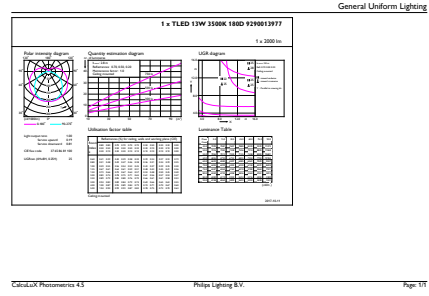
Product	D1	D2	A1	A2	A3
13T8/MAS/48-835/IF20/P/DIM 10/1	25.7 mm	26.3 mm	1,198.1 mm	1,205.2 mm	1,212.3 mm

MasterClass InstantFit (UL Type-A) T8

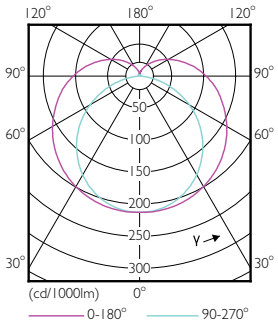
Photometric data



Spectral Power Distribution Colour - 13T8/MAS/48-835/IF20/P/DIM 10/1

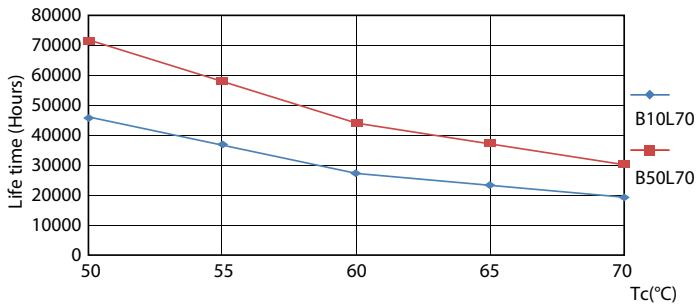


General uniform lighting - 13T8/MAS/48-835/IF20/P/DIM 10/1

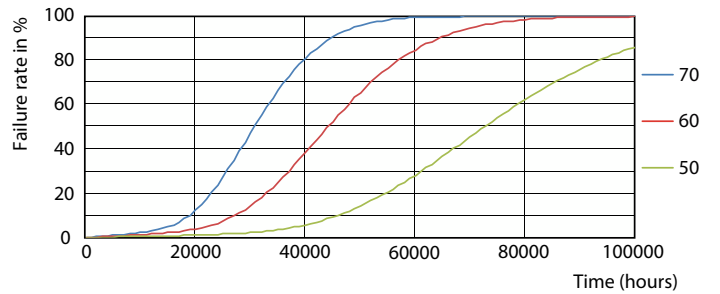


Light Distribution Diagram - 13T8/MAS/48-835/IF20/P/DIM 10/1

Lifetime



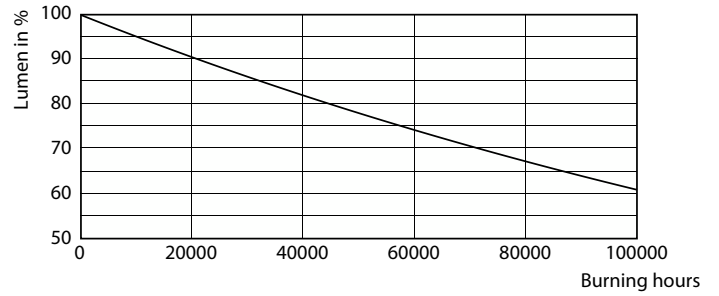
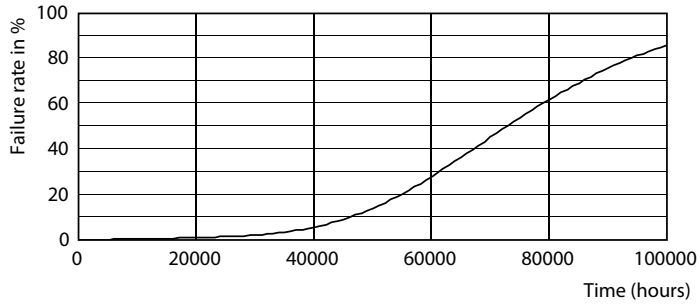
LEDtube 13W G13 2100lm



LEDtube 13W G13 2100lm

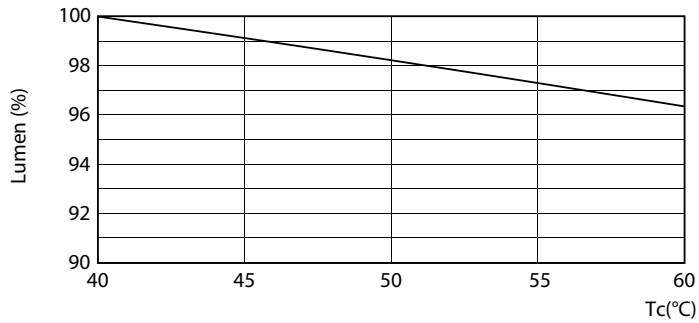
MasterClass InstantFit (UL Type-A) T8

Lifetime



LEDtube 13W G13 2100lm

Lumen Maintenance Diagram - 13T8/MAS/48-835/IF20/P/DIM 10/1



Lumen Maintenance Diagram - 13T8/MAS/48-835/IF20/P/DIM 10/1

