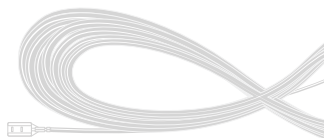
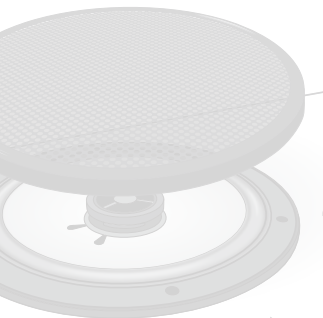


STEREO SPEAKERS

USER MANUAL



MODERN SOUND FOR YOUR CLASSIC

WELCOME

Thank you for purchasing RetroSound® Stereo Speakers. RetroSound® Stereo Speakers offer high-quality sound at an exceptional value and are specifically designed for optimal performance in your classic vehicle.

Precautions

It is best to consult a professional installation specialist to help with your installation.

Important Installation Guidelines:

- Carefully read and understand the instructions before attempting installation.
- Always disconnect the negative (-) battery terminal before beginning any work. Failure to do so may result in damage to the unit, fire, injury, or death.
- Use high-quality connectors to prevent fire or damage to the unit.
- Carefully check the installation area before drilling to ensure you won't drill into the gas tank, fuel lines, brake lines, hydraulic lines, vacuum lines, or electrical wiring.
- Never run the speaker wires outside the vehicle.
- Avoid running speaker wires over sharp edges and use rubber grommets to protect wires when routed through metal panels.

The information enclosed in this manual is to be used as a guide to assist you with installation and operation of your speakers. This guide does not cover every installation possibility, vehicle, or every aspect of the installation process.

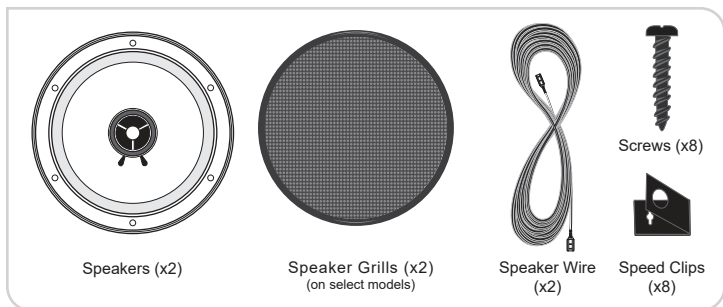
Retro Manufacturing, LLC, or its subsidiaries, assume no responsibility for any installation. This manual may be updated from time to time.

Visit our support website for the latest version

help.retromanufacturing.com

INSTALLATION

Included in your speaker box are two speakers, two speaker grills (on select models), two sets of speaker wire, and mounting hardware. In addition, you may need a Phillips screwdriver, handheld drill, 1/8-inch drill bit, wire strippers, wire crimpers, or wire cutters to complete this installation.



Step #1 Determine the Mounting Location

Determine the area where the speakers are to be mounted. Ensure that the area is large enough to accommodate the entire speaker diameter and that there is enough mounting depth for the speaker magnet. If you are mounting your speakers in the door of your vehicle, check all door functions (windows, door locks, etc.) through their entire range of motion to ensure the speaker will not obstruct them.

Step #2 Route the Speaker Wires

Route the speaker wires before installing your speakers. Always avoid sharp edges that could fray or cut the wiring and use rubber grommets to protect the speaker wires that need to be routed through metal. For the best quality connection and to minimize signal loss, always use high-quality connectors. Never run wires outside the vehicle.

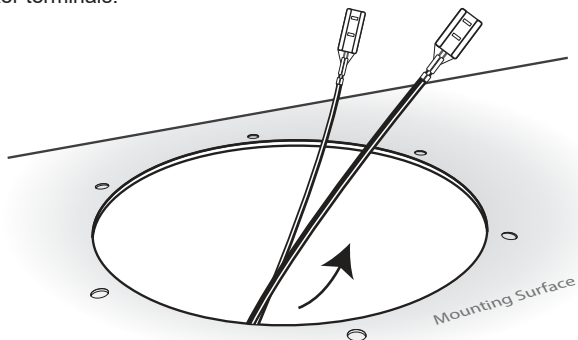
Step #3 Cut the Speaker Holes

If you are cutting holes for your speakers, refer to the specification chart (see page 5) to determine the nominal mounting diameter and depth. Using the speaker or grill as a template, mark the locations for the speaker mounting screws and drill the holes with a 1/8-inch drill bit.

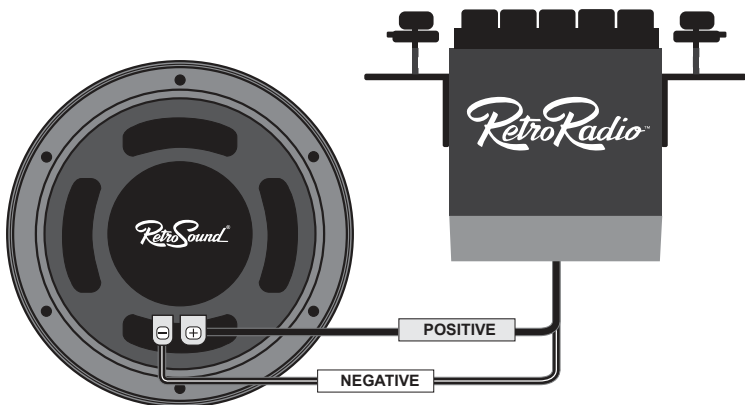
INSTALLATION

Step #4 Connect the Speakers

Feed the speaker wires through the speaker opening and connect to the speaker terminals.



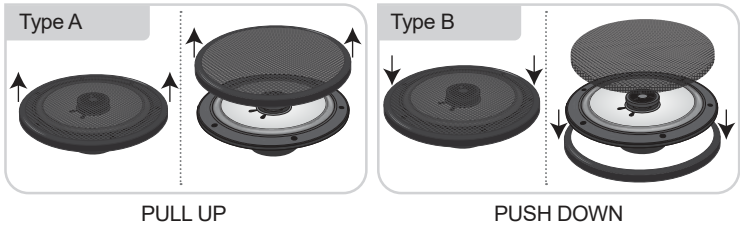
Connect the negative wire to the negative (-) speaker terminal and positive to the positive (+) speaker terminal.



INSTALLATION

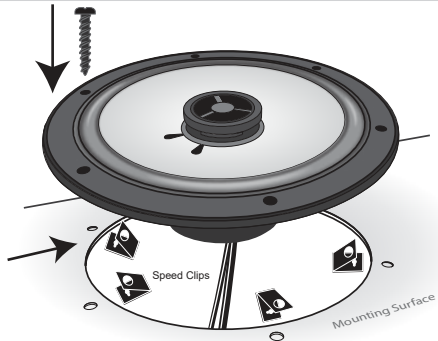
TIP: How to Remove Speaker Grills

To remove speaker grills either pull up on the grills ring (Type A) or push down on the grills ring (Type B).



Step #5 Mount the Speakers

Fit the speaker into the cutout and secure it using the supplied screws. If needed, place a speed clip over each drilled hole before mounting the speaker. (Some models may require placing the grill base before placing the speaker.)



Step #6 Complete the Installation



Tighten all screws until the speaker is snug and in place to prevent rattling. Be careful not to overtighten the screws. Complete the installation by placing the grill (if included) over the installed speaker.

SPECIFICATIONS

Specifications are subject to change without notice.

RetroSound® Stereo Speakers

MODEL	S-42	S-52	S-412	S-62
Nominal Diameter (inch)	4	5.25	4x10	6.5
Description	2-Way	2-Way	3-Way	2-Way
Nominal Impedance	4 ohm	4 ohm	4 ohm	4 ohm
Frequency Response	65H-21kHz	50Hz-21kHz	43Hz-21kHz	58Hz-21kHz
Sensitivity (SPL@1w/1m)	88dB	87dB	87dB	87dB
Power Handling (watts RMS/peak)	25/50	25/50	25/50	25/50
Speaker Grill	NO	NO	NO	YES
Mounting Depth (inch)	1.45	1.83	2.28	1.43
Mounting Depth (mm)	37	46.5	58	36.5

RetroSound® Premium Stereo Speakers (ultra-thin)

MODEL	R-352N	R-452N	R-463N	R-483N
Nominal Diameter (inch)	3.5	4	4x6	4x8
Description	2-Way	2-Way	2-Way	3-Way
Nominal Impedance	4 ohm	4 ohm	4 ohm	4 ohm
Frequency Response	100H-21kHz	65Hz-21kHz	80Hz-21kHz	65Hz-21kHz
Sensitivity (SPL@1w/1m)	85dB	88dB	86dB	87dB
Power Handling (watts RMS/peak)	25/50	30/60	25/50	60/120
Speaker Grill	NO	YES	YES	NO
Mounting Depth (inch)	1.10	1.29	1.37	1.59
Mounting Depth (mm)	28	33	35	40.5
MODEL	R-525N	R-652N	R-693N	
Nominal Diameter (inch)	5.25	6.5	6x9	
Description	2-Way	2-Way	3-Way	
Nominal Impedance	4 ohm	4 ohm	4 ohm	
Frequency Response	56Hz-21kHz	52Hz-21kHz	40Hz-21kHz	
Sensitivity (SPL@1w/1m)	88dB	87dB	90dB	
Power Handling (watts RMS/peak)	40/80	50/100	100/200	
Speaker	YES	YES	YES	
Mounting Depth (inch)	1.47	1.73	1.9	
Mounting Depth (mm)	37.5	44	48.5	

WARRANTY

Your unit comes with a manufacturer's warranty covering any defects in materials and workmanship. Retro Manufacturing, LLC (collectively referred to as "the warranter"), at its option, will either (a) repair your unit with new or refurbished parts or (b) replace it with a new or refurbished unit. The warranty period starts from the original purchase date and is valid for the length of time indicated in the chart below. The decision to repair or replace will be made by the warranter.

ITEM	WARRANTY
Speakers	One (1) Year

During the "Parts" warranty period, there will be no charge for parts. You must mail in your unit during the warranty period at your expense. This warranty only applies to products purchased directly from Retro Manufacturing or an authorized dealer. This warranty is extended only to the original purchaser of a new product that was not sold "as is." A purchase receipt or other proof of the original purchase date is required for warranty service.

To handle a warranty issue, contact us at tech@retromanufacturing.com or 888.325.1555 for a Return Authorization (RA) number. A RA number must accompany all returns and warranty issues. Any product received without a RA number will be refused.

LIMITED WARRANTY-LIMITS AND EXCLUSIONS

This warranty ONLY COVERS failures due to defects in materials and workmanship and DOES NOT COVER normal wear and tear or cosmetic damage. The warranty ALSO DOES NOT COVER damages that occurred during shipment, failures which are caused by products not supplied by the warranter, failures that result from accident, misuse, abuse, neglect, bug infestation, mishandling, misapplication, alteration, faulty installation, set-up adjustment, maladjustment of consumer control, improper maintenance, improper antenna, inadequate signal reception or pickup, power line surge, improper voltage supply, lightning, modification, commercial use (such as use in hotels, offices, restaurants, or other business uses) or rental use of the product, or service by anyone other than Retro Manufacturing, LLC, or damage that is attributable to acts of God.

THERE ARE NO EXPRESS WARRANTIES EXCEPT AS LISTED UNDER LIMITED WARRANTY. THE WARRANTER IS NOT LIABLE FOR INCIDENTAL OR CONSEQUENTIAL DAMAGES RESULTING FROM THE USE OF THIS UNIT OR ARISING OUT OF ANY BREACH OF THIS WARRANTY. (As examples, this excludes damages for lost time, the cost of having someone remove or re-install an installed unit if applicable, travel to and from the servicer, and loss of media, data, or other memory contents. The items listed are not exclusive but are for illustration only.) ALL EXPRESS AND IMPLIED WARRANTIES, INCLUDING THE WARRANTY OF MERCHANTABILITY, ARE LIMITED TO THE PERIOD OF THE LIMITED WARRANTY.

Some states do not allow the exclusion or limitation of incidental or consequential damages or limitations on how long an implied warranty lasts, so the exclusions may not apply to you. This warranty gives you specific legal rights, and you may also have other rights which vary from state to state. If a problem with this unit develops during or after the warranty period, you may contact your dealer or Retro Manufacturing, LLC.



7470 Commercial Way | Henderson, NV 89011
help.retromanufacturing.com

MODERN SOUND FOR YOUR CLASSIC

  [retromanufacturing](#)

Published: 05/24/2022 | ©2022 Retro Manufacturing, LLC