

**RICOH**

# RICOH Ri 1000X

## Option Platen

## User Guide

For Hat Platen/Shoe Platen/Sleeve Platen  
Face Covering Platen



# TABLE OF CONTENTS

|  |           |
|--|-----------|
| <b>TABLE OF CONTENTS .....</b>                         | <b>2</b>  |
| <b>How to Read the Manuals .....</b>                   | <b>3</b>  |
| Before You Begin.....                                  | 3         |
| Disclaimer .....                                       | 3         |
| Notes.....   | 3         |
| <b>1. Printing Method.....</b>                         | <b>4</b>  |
| 1.1. Target Printer.....                               | 4         |
| 1.2. Setup Printer.....                                | 4         |
| 1.3. Printing method for Textile Productionsever ..... | 4         |
| <b>2. Appendix.....</b>                                | <b>11</b> |
| 2.1. Revision history .....                            | 11        |

# How to Read the Manuals

## Before You Begin...

Only appropriately trained users should operate the machine.

## Disclaimer

Contents of this manual are subject to change without prior notice.

To the maximum extent permitted by applicable laws, in no event will the manufacturer be liable for any damages whatsoever arising out of failures of this machine, losses of the registered data, or the use or non-use of this machine and operation manuals provided with it.

Make sure that you always copy or have backups of the data registered in this machine. Documents or data might be erased due to your operational errors or malfunctions of the machine.

In no event will the manufacturer be responsible for any documents created by you using this machine or any results from the data executed by you.

## Notes

Read this manual carefully before you use the machine and keep it handy for future reference.

For safe and correct use, be sure to read Safety Information before using the machine.

The manufacturer will not be responsible for any damage or expense that might result from the use of parts other than genuine parts from the manufacturer with your products.

For good output quality, the manufacturer recommends that you use genuine ink from the manufacturer.

Some illustrations in this manual may be slightly different from the machine.

Certain options may not be available in some countries. For details, please contact your local dealer. Depending on which country you are in, certain units may be optional. For details, please contact your local dealer.

# 1. Printing Method

## 1.1. Target Printer


This document applies only to Ricoh genuine platen only.

## 1.2. Setup Printer

Refer to Ricoh Ri series Direct to Garment Printer Manual.

## 1.3. Printing method for Textile Productionsever

1. Start Textile Productionsever.
2. Input the image to Textile Productionsever.
3. Please set with Textile Productionsever according to the platen type.

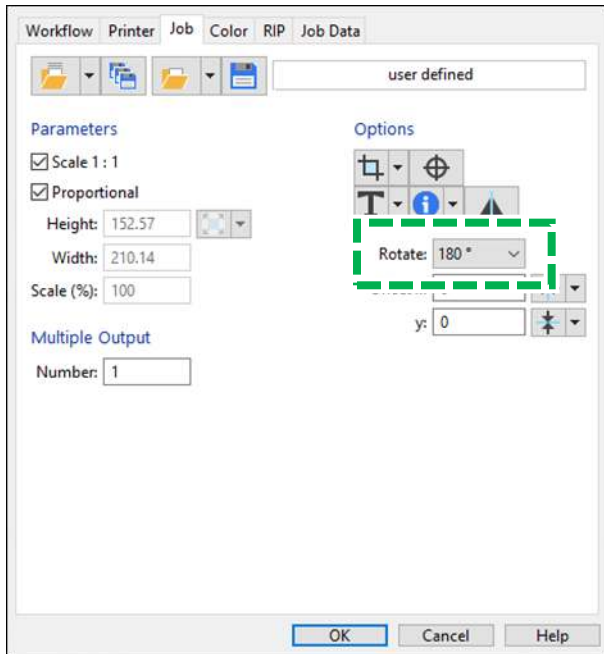
| Platen type   | Textile Productionsever  |
|---------------|--|
| Hat           | a) User select Media size<br> <b>CAUTION</b> (*1) |
| Sleeve        | a) User select Media size  |
| Shoe          | a) User select Media size<br>b) User set Offset/Scaling  |
| Face Covering | a) User select Media size<br>b) User set Offset/Scaling  |

**(CAUTION \*1)**

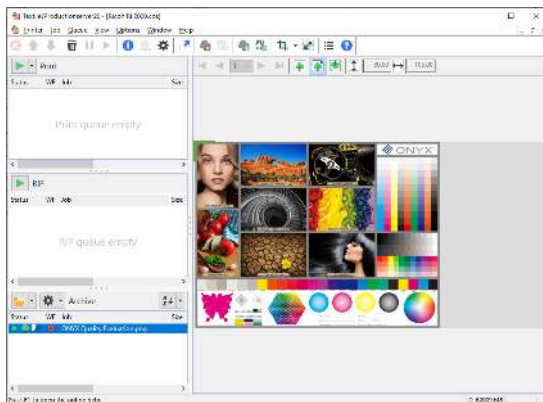
The image is printed 180 degrees inverted from the display on the Textile Productions server.

In that case, the user should set 180 degrees.

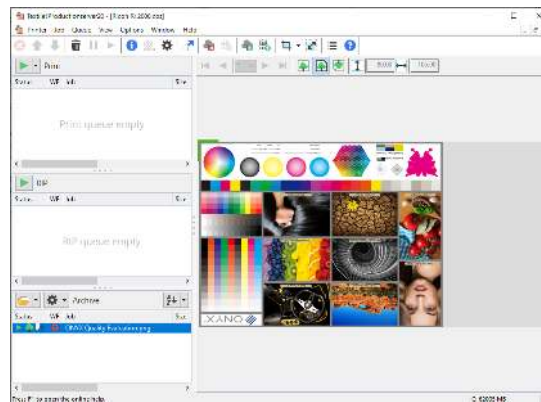
The print settings are below.



**Default Settings:**

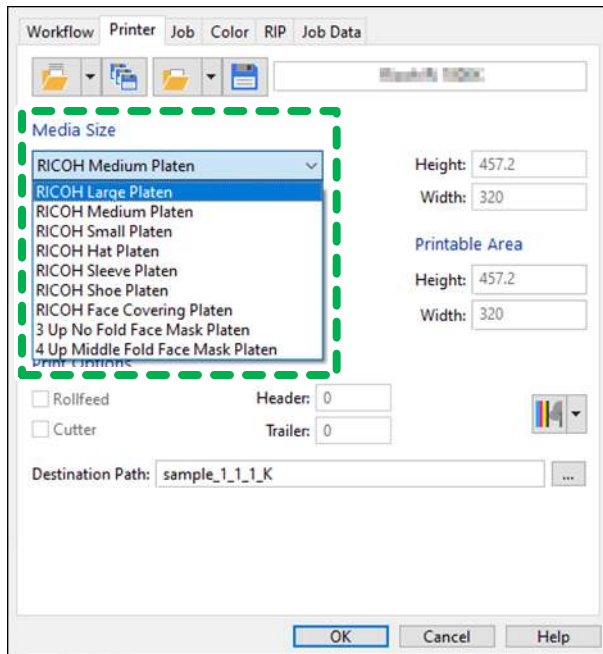


**After Set Rotate(180 degree)**



a) User select Media size

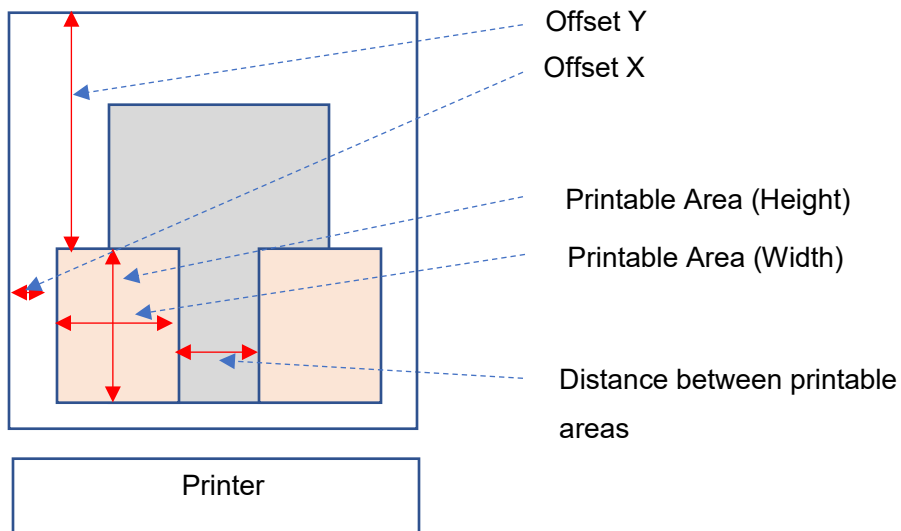
**Textile Productionserver:**



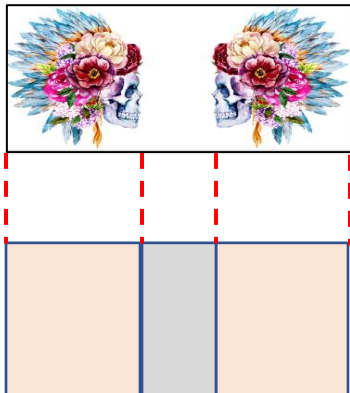
b) User set Offset/Scaling

◆ For “Shoe Platen”

According to type of Shoe Attachment, user set Height x Width, Offset x, y.



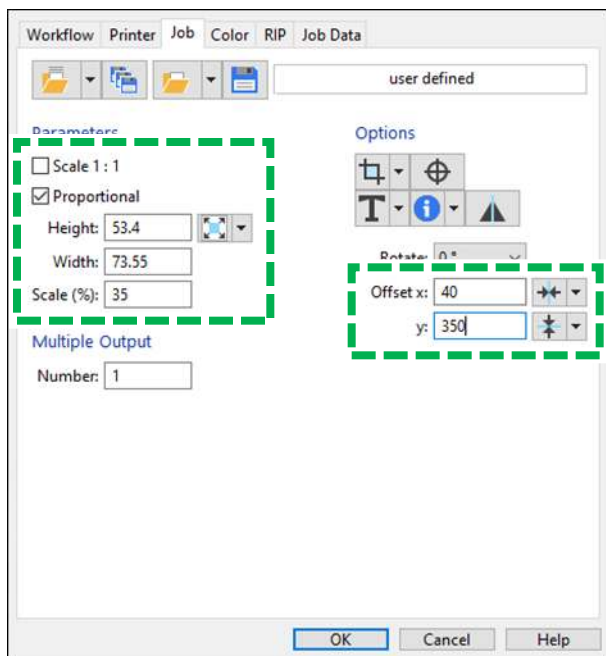
If you want to print on both feet, please prepare the following image and set Offset x,y.



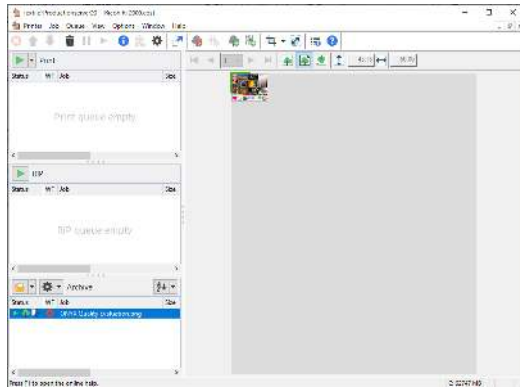
**Offset of each Shoe attachment**

| Shoe Attachment | Offset     | (Reference)<br>Printable Area(Width x Height) | (Reference)<br>Distance between printable areas |
|-----------------|------------|---|---|
| Small           | X:20 Y:220 | 85 x 150 mm                                   | 205 mm  |
| Medium          | X:40 Y:360 | 50 x 50 mm                                    | 40 mm   |
| Large           | X:40 Y:350 | 60 x 60 mm                                    | 40 mm   |

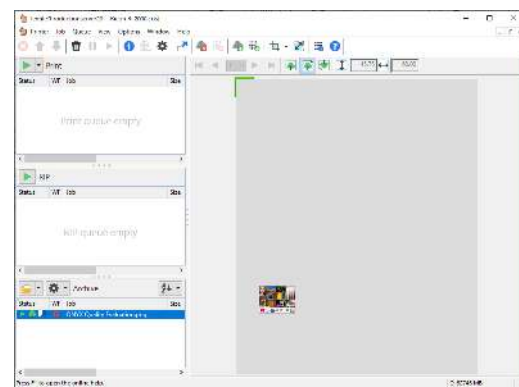
**Setting method of Textile Productions server:**



**Default Settings:**



**After Set Offset(X =40, Y=350)**

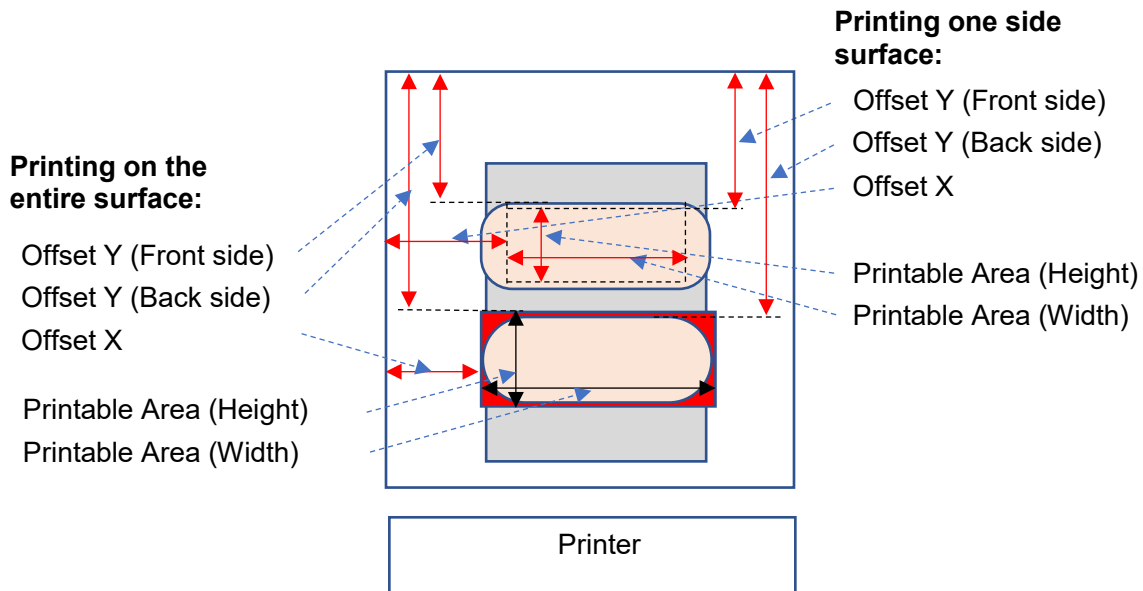


◆ For “Face Covering Platen”



User set Height x Width, Offset x, y.

**IMPORTANT!** If you print with “Printing on the entire surface” method, depending on image, it may print to the area outside the platen.

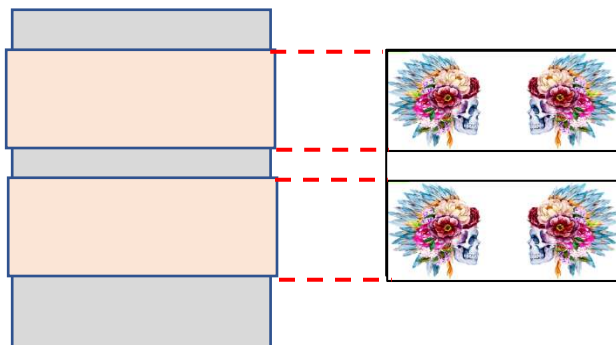
In the figure below, it may be printed in the red area.



Offset of Face Covering Platen

| Printing Method  | (Reference)<br>Offset   | (Reference)<br>Printable Area(Width x Height) |
|--|---|---|
| <p><b>Printing on the entire surface</b></p>  | <p>[Front side]<br/>X: 40<br/>Y: 100<br/>[Back side]<br/>X: 40<br/>Y: 275</p> | 330 x 120 mm                                  |
| <p><b>Printing one side surface</b></p>       | <p>[Front side]<br/>X: 10<br/>Y: 90<br/>[Back side]<br/>X: 10<br/>Y: 265</p>  | 385 x 140 mm                                  |

If you want to print on multiple medias, please prepare the following image and set Offset x,y.

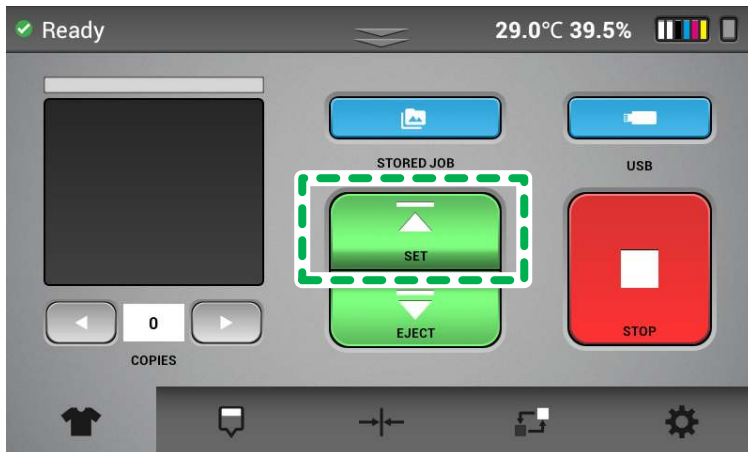


**Setting method of Productionserver:**

See page 6 "For "Shoe Platen"".

4. User print image in Textile Productionserver.
5. Please lower the height according to the option platen. If you do not lower the height, the platen may hit the printer body.

6. Press [SET] on the printer panel.



## 2. Appendix

### 2.1. Revision history

| Revision        | Date issued    | Description |
|-----------------|----------------|-------------|
| Initial version | February, 2023 |             |





