



Powerbank USB-C PD 130W 50000

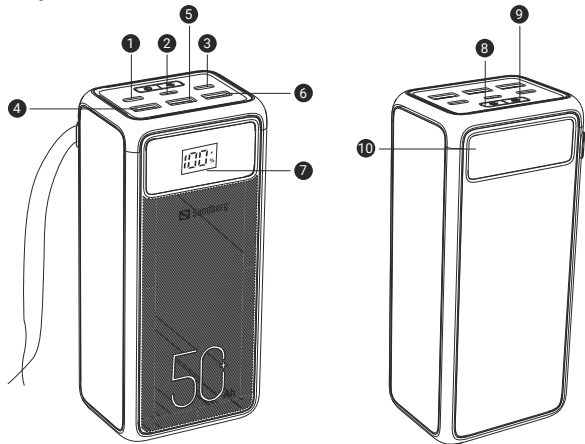
Quick guide

420-75



www.sandberg.world

Product preview



- 1. OUT1 (USB-C, 30W)
- 2. IN2 (Lightning, 18W) Input
- 3. IN/OUT3 (USB-C, 100W)
- 4. OUT4 (USB, 18W)

- 5. OUT5 (USB, 18W)
- 6. OUT6 (USB, 18W)
- 7. LED Digital Display
- 8. Lamp Button

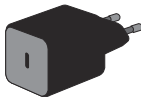
- 9. Switch Button
- 10. Lamp

Charge Powerbank

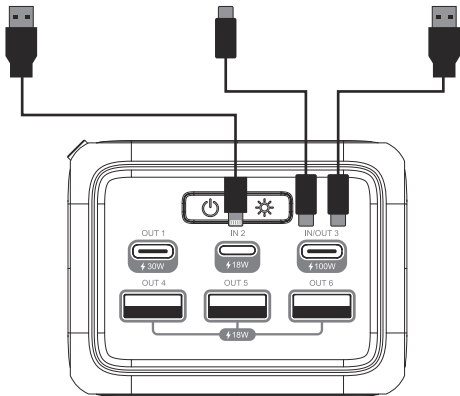
Option A



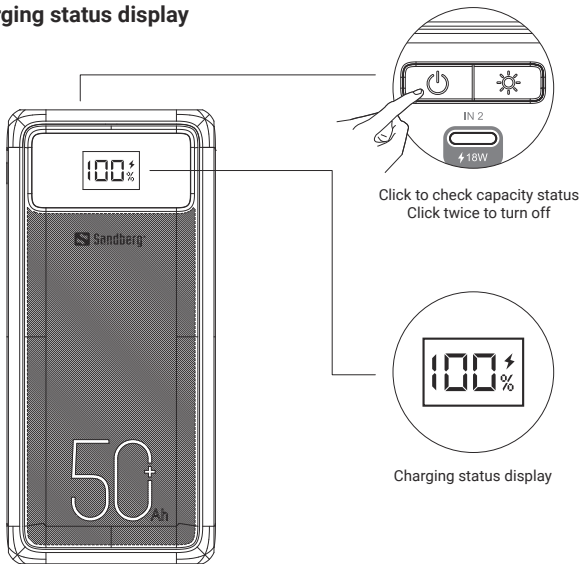
Option B



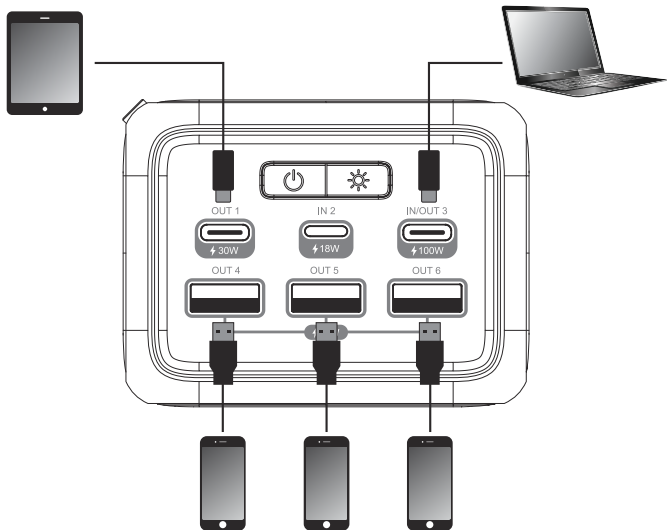
Option C



Charging status display



Charge devices



Lamp

1



Press once



2



Press once more



3



Press 4 sec to activate continuous SOS morse mode



4

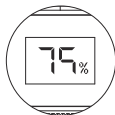


Press once

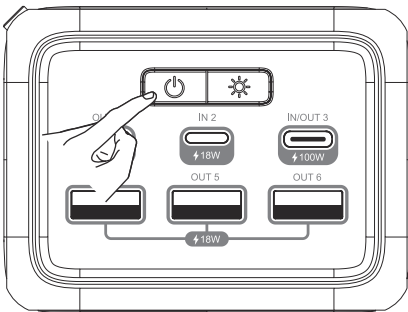


Always-ON-Mode

NOTE: The powerbank will turn off after 2 hours if no device is connected, or if a device consuming below 60 mA is connected.



Display blinking in last digit



Press 4 seconds to activate the Always-ON-Mode



Support

<http://helpdesk.sandberg.world>

Warranty

There is a five-year warranty on your Sandberg product. Please read the warranty terms and register your new Sandberg product at www.sandberg.world/warranty

5
Years
Warranty



For information on handling electronic waste, see www.sandberg.world/weee