

SysM/SysD - Connected Push-button Module, 1-gang/2-gang

Device user guide

Information about features and functionality of the device.

10/2022

Legal Information

The Schneider Electric brand and any trademarks of Schneider Electric SE and its subsidiaries referred to in this guide are the property of Schneider Electric SE or its subsidiaries. All other brands may be trademarks of their respective owners.

This guide and its content are protected under applicable copyright laws and furnished for informational use only. No part of this guide may be reproduced or transmitted in any form or by any means (electronic, mechanical, photocopying, recording, or otherwise), for any purpose, without the prior written permission of Schneider Electric.

Schneider Electric does not grant any right or license for commercial use of the guide or its content, except for a non-exclusive and personal license to consult it on an "as is" basis. Schneider Electric products and equipment should be installed, operated, serviced, and maintained only by qualified personnel.

As standards, specifications, and designs change from time to time, information contained in this guide may be subject to change without notice.

To the extent permitted by applicable law, no responsibility or liability is assumed by Schneider Electric and its subsidiaries for any errors or omissions in the informational content of this material or consequences arising out of or resulting from the use of the information contained herein.

Table of Contents

Safety information	4
SysM/SysD - Connected Push-button Module, 1-gang/2-gang	5
For your safety	6
About the device	7
Installing the device	7
Pairing the device	8
Configuring the device	9
Switch	9
Dimmer	11
Shutter	14
Using the device	17
Manual operation	17
Operation using the app	18
Setting up a schedule	21
Creating a moment	22
Creating an automation	24
Removing the device	29
Resetting the device	30
LED indications	30
Troubleshooting	31
Technical Data	31

Safety information

Important information

Read these instructions carefully and look at the equipment to become familiar with the device before trying to install, operate, service, or maintain it. The following special messages may appear throughout this manual or on the equipment to warn of potential hazards or to call attention to information that clarifies or simplifies a procedure.



The addition of either symbol to a “Danger” or “Warning” safety label indicates that an electrical hazard exists which will result in personal injury if the instructions are not followed.



This is the safety alert symbol. It is used to alert you to potential personal injury hazards. Obey all safety messages that accompany this symbol to avoid possible injury or death.

DANGER

DANGER indicates a hazardous situation which, if not avoided, **will result in** death or serious injury.

Failure to follow these instructions will result in death or serious injury.

WARNING

WARNING indicates a hazardous situation which, if not avoided, **could result in** death or serious injury.

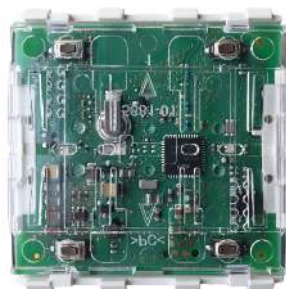
CAUTION

CAUTION indicates a hazardous situation which, if not avoided, **could result in** minor or moderate injury.

NOTICE

NOTICE is used to address practices not related to physical injury.

SysM/SysD - Connected Push-button Module, 1-gang/2-gang



MEG5116-0300
(System M: Connected Push-button Module, 1-gang)

MEG5126-0300
(System M: Connected Push-button Module, 2-gang)



MEG5116-6000
(System Design: Connected Push-button Module, 1-gang)

MEG5126-6000
(System Design: Connected Push-button Module, 2-gang)

For your safety

<i>NOTICE</i>
RISK OF DAMAGE TO DEVICE Always operate the product in compliance with the specified technical data. Failure to follow these instructions can result in equipment damage.

About the device

The Connected push-button module, 1-gang/2-gang (hereinafter referred to as a **Push-button module**) allows you to carry out various functions, depending on the insert, such as switching, dimming and controlling the shutter. The Push-button module can be connected to the Wiser Hub 2nd Generation.

The Push-button module can be completed with:

- corresponding 1-gang or 2-gang rockers
- Frame in the corresponding design
- corresponding inserts for switch, dimmer, and shutter or blind control

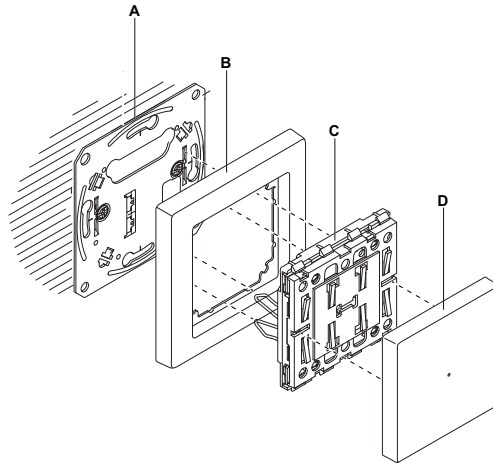
Switch insert	Dimmer insert	Shutter insert
<ul style="list-style-type: none"> ◦ Relay switch inserts ◦ Electronic switch inserts 	<ul style="list-style-type: none"> ◦ Universal dimmer inserts ◦ 1-10 V insert ◦ DALI insert 	Blind control insert

Features of a Push-button module:

- The Push-button module supports functionality such as switching, dimming and shutter control.
- With the Wiser app, you can combine the settings of one or more devices to form a Moment or an Automation.
- You can create a schedule for the various device functions in an easy manner as per your specific requirements for comfort and convenience.

1-gang switch, combination of:

- Insert
- Frame
- Push-button module
- Rocker



TIP: 1-gang switch shown above with 1-channel insert, 1-gang application module, 1-gang rocker and frame, for 2-gang switch choose 2-channel insert, 2-gang application module, 2-gang rockers, and it's frame.



NOTE: This device user guide shows pairing, configuration and other features of the 1-gang switch, dimmer, and shutter or blind control. The same can be done for the 2-gang switch and dimmer.

Installing the device

Refer to the installation instruction supplied with this product.

Pairing the device

Using the Wisier Home app, pair your Push-button module (mounted on the insert) with the **Wisier Hub** to access and control the control the insert behind it. To pair the 1-gang Push-button module:

1. On the Home page, tap .
2. Tap **Devices** >  and tap **Lights** > **1-gang** > **Next**.

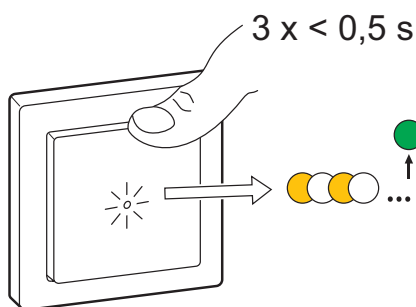
NOTE:

- 1-gang Push-button module for switch, dimmer and shutter.
- 2-gang Push-button module for switch and dimmer.

3. Short press the top-center of the 1-gang Push-button module three times.

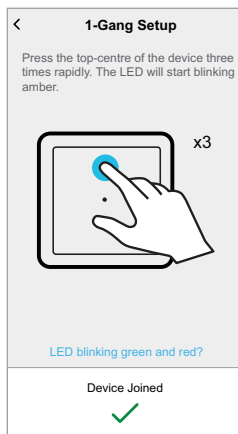
TIP: In case of 2-gang Push-button module, short press the top-right Push-button module three times.

Make sure led blinks amber.



TIP: The next screen shows the joining process of the 1-gang Push-button module.

4. Wait for a few seconds until the LED turns green. You can also see in the app that the 1-gang Push-button module is joined.



5. Tap **Next** to enter 1-gang Push-button module name and assign it to an existing room or a new room.

You can see the added 1-gang Push-button module on the Home page under the room tab or under **ALL** devices.

Configuring the device

Switch

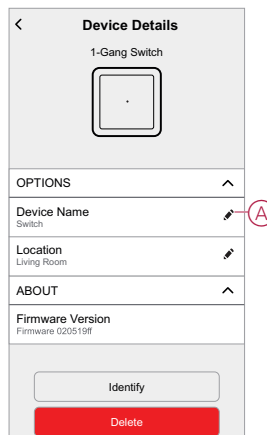
Using the Wiser Home app, you can rename the 1-gang switch, edit or assign a new location, identify, and delete the 1-gang switch from the system.

NOTE: Configuring the device shown for 1-gang switch similar can be done for 2-gang switch.

Renaming the device

Using the Wiser Home app, you can rename your 1-gang switch.
To rename the 1-gang switch:


1. On the Home page, tap .
2. Tap **Devices > 1-gang Switch > Device Name (A)** to rename the 1-gang switch.

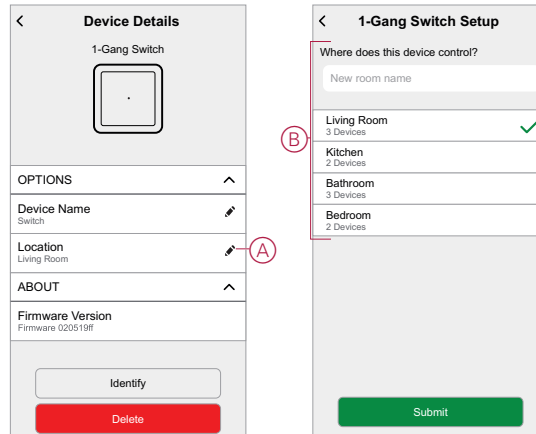


Setting the device location in the room

Using the Wiser Home app, you can assign your 1-gang switch to any room (such as bedroom, living room, dining room etc.).

To assign a 1-gang switch to a room:


1. On the Home page, tap .
2. Tap **Devices > 1-gang Switch > Location (A)** to assign the 1-gang switch to the existing room or a new room (B) and tap **Submit**.



Identifying the device

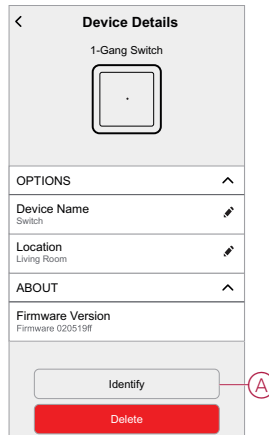
Using the Wiser Home app, you can identify a 1-gang switch from the other available devices in the room.

To identify the 1-gang switch:

1. On the Home page, tap .
2. Tap **Devices > 1-gang Switch > Identify (A)**.

NOTE:

- This feature flashes the 1-gang switch LED, so you can identify the actual device. It also switches connected loads on/off.
- The 1-gang switch LED will continue to flash until you tap **OK**.



Dimmer

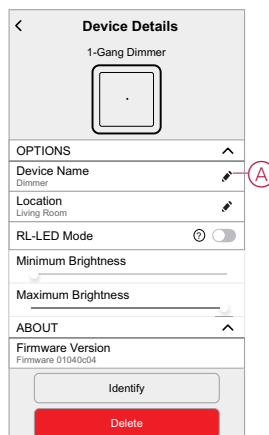
Using the Wiser Home app, you can rename the 1-gang dimmer, edit or assign a new location, identify, and delete the 1-gang dimmer from the system.

NOTE: Configuring the device shown for 1-gang dimmer similar can be done for 2-gang dimmer.

Renaming the device

Using the Wiser Home app, you can rename your 1-gang dimmer. To rename the 1-gang dimmer:


1. On the Home page, tap .
2. Tap **Devices > 1-gang Dimmer > Device Name (A)** to rename the 1-gang dimmer.

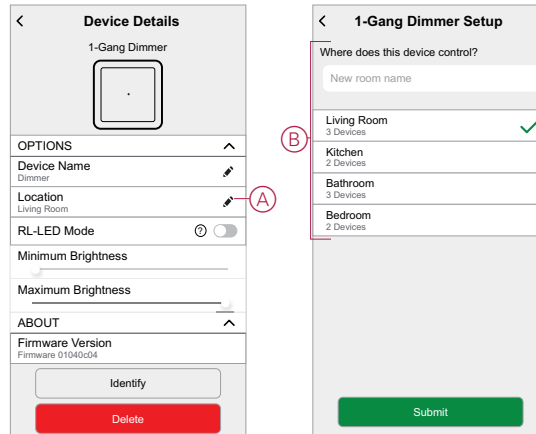


Setting the device location in the room

Using the Wiser Home app, you can assign your 1-gang dimmer to any room (such as bedroom, living room, dining room etc.).

To assign a 1-gang dimmer to a room:


1. On the Home page, tap .
2. Tap **Devices > 1-gang Dimmer > Location (A)** to assign the 1-gang dimmer to the existing room or a new room (B) and tap **Submit**.



Identifying the device

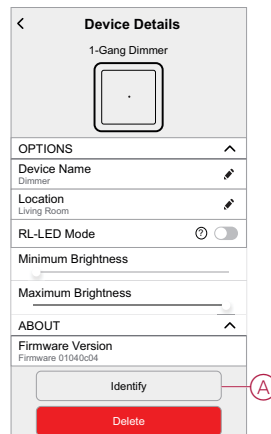
Using the Wiser Home app, you can identify a 1-gang dimmer from the other available devices in the room.

To identify the 1-gang dimmer:

1. On the Home page, tap .
2. Tap **Devices > 1-gang Dimmer > Identify (A)**.

NOTE:


- This feature flashes the 1-gang dimmer LED, so you can identify the actual device. It also dims up/down the dimmer brightness.
- The 1-gang dimmer LED will continue to flash until you tap **OK**.



Setting minimum or maximum brightness

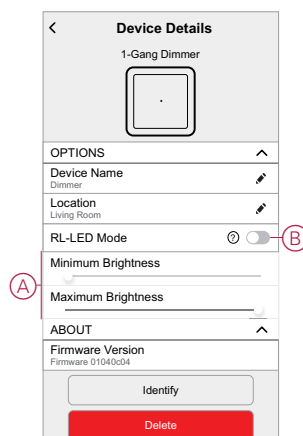
Using the Wiser Home app, you can set minimum or maximum brightness.

To set minimum or maximum brightness:

1. On the Home page, tap .
2. Tap **Devices > 1-gang Dimmer** and use the slider control (A) to set minimum or maximum brightness.

TIP: You can enable RL-LED Mode (B) if the 1-gang dimmer is connected to an LED lamp. It is recommended using this mode when you experience flickering of the bulb. Verify the lamp manufacturer's specifications and the reduced power of the dimmer.

NOTE: The Min/Max brightness settings and RL-LED mode features are not for 2-Gang Dimmer.



Shutter

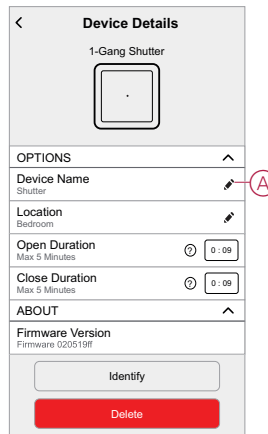
Using the Wiser Home app, you can rename the 1-gang shutter, edit or assign a new location, identify, and delete the 1-gang shutter from the system.

NOTE: There is no 2-gang switch available for shutter operation.

Renaming the device


Using the Wiser Home app, you can rename your 1-gang shutter. To rename the 1-gang shutter:

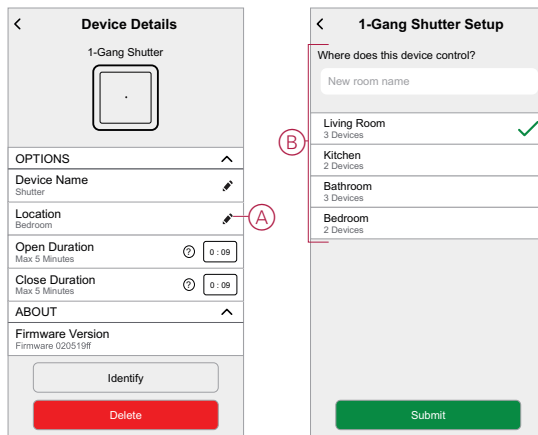
1. On the Home page, tap .
2. Tap **Devices > 1-gang Shutter > Device Name (A)** to rename the 1-gang shutter.



Setting the device location in the room

Using the Wiser Home app, you can assign your 1-gang shutter to any room (such as bedroom, living room, dining room etc.).
To assign a 1-gang shutter to a room:


1. On the Home page, tap .
2. Tap **Devices > 1-gang Shutter > Location (A)** to assign the 1-gang shutter to the existing room or a new room (B) and tap **Submit**.



Identifying the device

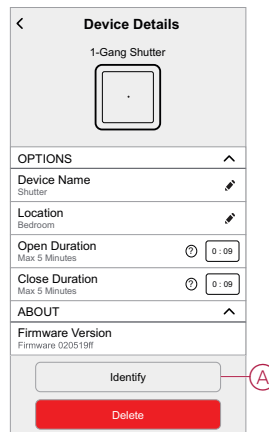
Using the Wiser Home app, you can identify a 1-gang shutter from the other available devices in the room.

To identify the 1-gang shutter:

1. On the Home page, tap .
2. Tap **Devices > 1-gang Shutter > Identify (A)**.


NOTE:

- This feature flashes the 1-gang shutter LED, so you can identify the actual device. It also moves the shutter up and down.
- The 1-gang shutter LED will continue to flash until you tap **OK**.

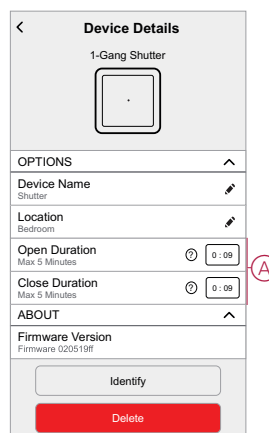


Setting Open/Close duration

Using the Wiser Home app, you can set the open or close duration of the shutter. To set the open or close duration of the shutter:

1. On the Home page, tap .
2. Tap **Devices > 1-gang Shutter** and tap Open/Close duration field box (A) to set the time.

TIP: This is how long it would take to fully close the shutter. To time this correctly, fully open the shutter and then time how long it takes to fully close.

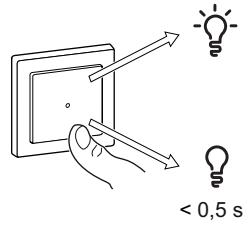


Using the device

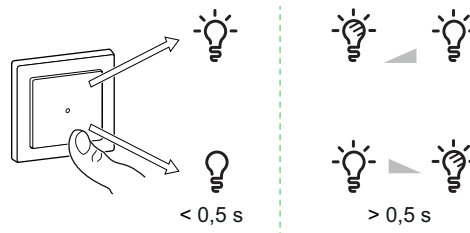
Manual operation

Using the pushbutton, you can control the switch, dimmer, and shutter manually.

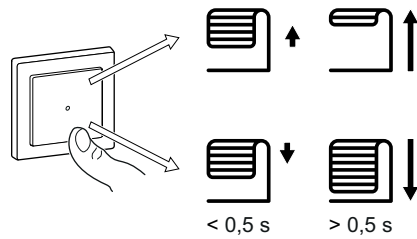
Switch: With the switch insert, you can switch the load on/off.



Dimmer: With the dimmer insert, you can switch the light on/off and dim lights..



Shutter: With the shutter insert, you can move the shutter up and down.





Operation using the app

Using the Wisier Home app, you can control the switch, dimmer, and shutter remotely.

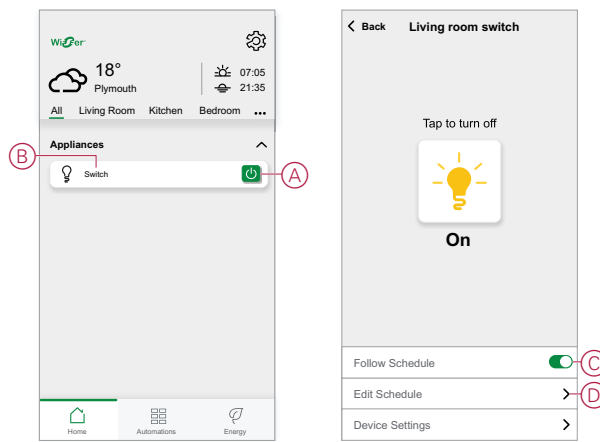
Turning On/Off the switch

To turn On/Off the switch:

1. Go to the Home page, tap **All** and find the device.
2. Tap  (A) to turn On/Off the switch.


TIP: You can also tap **Switch** (B) >  to turn On/Off the switch.

NOTE: Use Follow schedule switch (C) to turn on and off the Schedule and tap **Edit schedule** (D) to edit the created schedule.



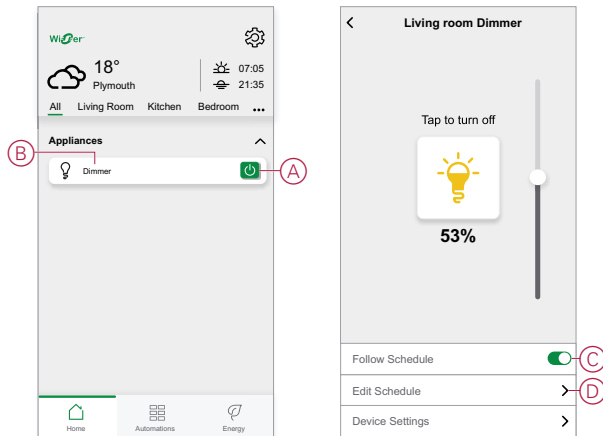
Adjusting the brightness level

To increase/decrease the brightness level:

1. Go to the Home page, tap **All** and find the device.
2. Tap  (A) to turn On/Off the light.
3. Tap **Dimmer** (B) to set brightness % using the sliding bar.



TIP: you can also tap  to turn On/Off the light.

NOTE: Use Follow schedule switch (C) to turn on and off the Schedule and tap **Edit schedule** (D) to edit the created Schedule.

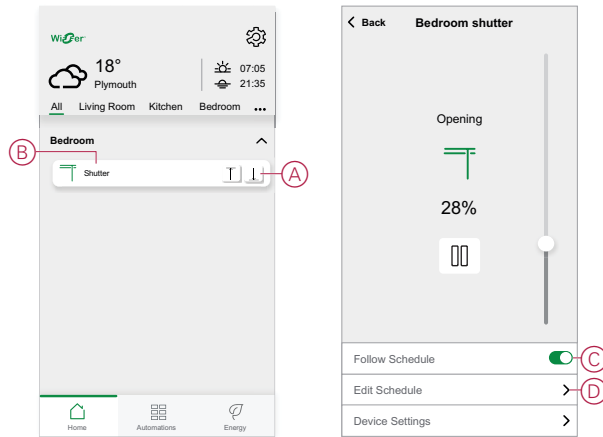


Opening / Closing the shutter

To open / close the shutter:

1. Go to the Home page, tap **All** and find the device.
2. Tap   (A) to open/close the shutter.
3. Tap **Shutter** (B) to set opening/closing % of the shutter using the sliding bar.



NOTE: Use Follow schedule switch (C) to turn on and off the schedule and tap Edit schedule (D) to edit the created schedule.

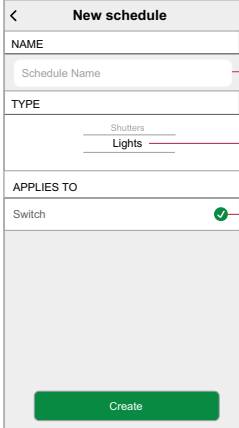


Setting up a schedule


The devices can be fully controlled by schedules. Once the schedule is set, the devices operate at a given time.

To create a schedule:

1. On the **Home** page, tap .
2. Go to **Schedules** >  to create a schedule.
3. Enter the name of the schedule (A).
4. In the **TYPE** menu, select **Lights** (B).
5. In the **APPLIES TO** menu, select **Switch** (C) from the listed devices.
6. Tap **Create** to setup events.



7. Tap  to add an event such as **STATE** (lights On/Off) and **WHEN** (sunrise/sunset or specific time range).


NOTE: Tap  to copy schedule from one day to other days or copy the entire schedule to a new schedule or to an existing one.

8. Tap **Set** to save the schedule.

NOTE: Follow the steps above to set a schedule for pushbutton dimmer and shutter respectively.


Creating a moment

Moment allows you to group multiple actions that are usually performed together. By using the Wiser Home app, you can create moments based on your needs. To create a moment:

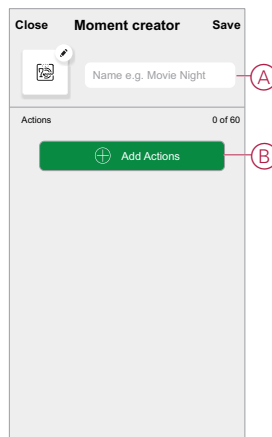
1. On the **Home** page, tap .

2. Go to **Moments** >  to create a moment.

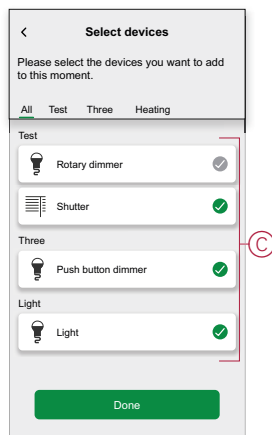
3. Enter the name of the moment (A).

TIP: You can choose the cover image that represents your moment by tapping .

4. Tap **Add actions** (B) to select the list of devices.




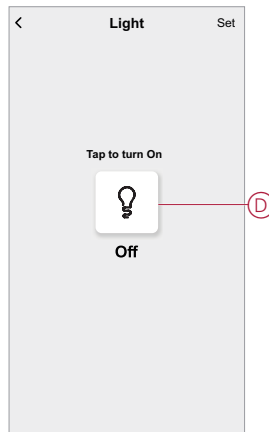
5. In the **Add actions** menu, you can select the devices (C).



6. Once all the device are selected, tap **Done**.

- On the **Moment creator** page, tap on the device to set the condition. For example, select micromodule switch.

– Tap  (D) to turn on.





When the desired condition is set, tap **Set**.

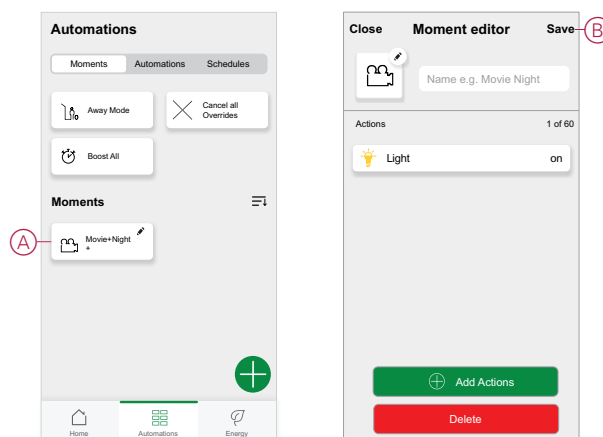
- Once all conditions are set, tap **Save**.

Once the moment is saved, it is visible on the **Automation** tab. You can tap on the moment to enable it.

Editing a moment



To edit a moment:

- On the **Home** page, tap .
- Go to **Moments**, locate the moment you want to edit and tap  (A).
- On the **Moment Editor** page, you can tap each item to change the settings and tap **Save** (B).

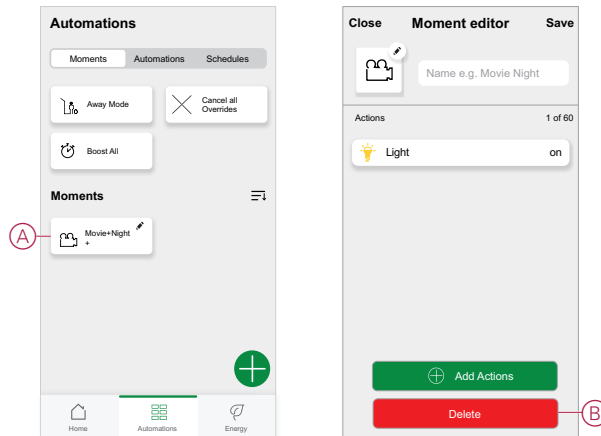


Deleting a moment

To delete a moment:

- On the **Home** page, tap .
- Go to **Moments**, locate the moment you want to delete and tap  (A).



3. On the Moment Editor page, tap **Delete** (B).

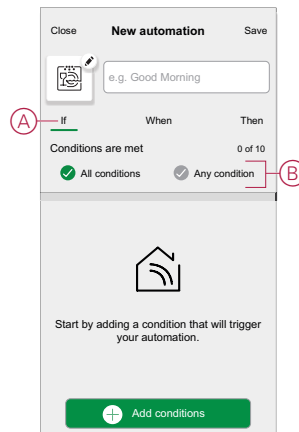


Creating an automation

Automation allows you to group multiple actions that are usually done together, triggered automatically or at scheduled times. By using the Wisernet app, you can create automations based on your needs.

To create an automation:

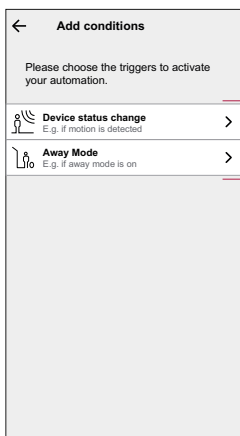
1. On the **Home** page, tap .
2. Go to **Automation** >  to create an automation.
NOTE: Max. 10 automations can be added.
3. Tap **If** (A) and select any of the following conditions (B):
 - **All conditions:** This triggers an action only when all conditions are met.
 - **Any condition:** This triggers an action when at least one condition is met.



4. Tap **Add conditions** and select any of the following (C):


- **Device status change:** Select a device to enable automation.
- **Away Mode: Enable / Disable** away mode to trigger an action.

NOTE: Away mode can also be used as a trigger to turn off the lights, dimmer or closing the shutter etc. For more information refer to *Away mode*.



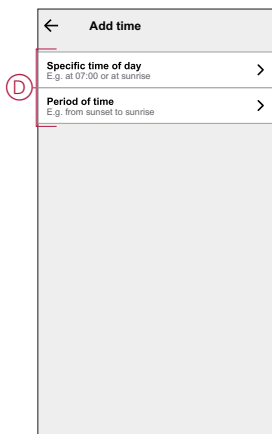
NOTE:


- Max. 10 conditions can be added.

- To remove condition, swipe left and tap .

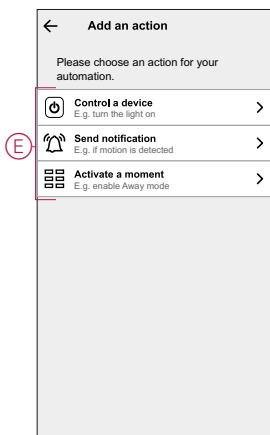
5. To set a specific time for your automation, tap **When > Add time** and select any of the following (D):

- **Specific time of the day: Sunrise, Sunset, Custom**
- **Period of time: Daytime, Night time, Custom**



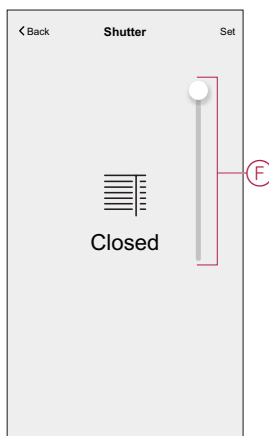
NOTE: To remove a specific time, swipe left and tap .

6. To add an action, tap **Then > Add an action** and select any of the following (E):
 - **Control a device:** Select a devices that you want to trigger.
 - **Send notification:** Turn on the notification for the automation.
 - **Activate a moment:** Select the moment that you want to trigger.




7. Tap **Control a device > Micromodule Shutter**.

Set the required opening/closing percentage or fully open/closed state using the sliding bar (F), then tap **Set**.

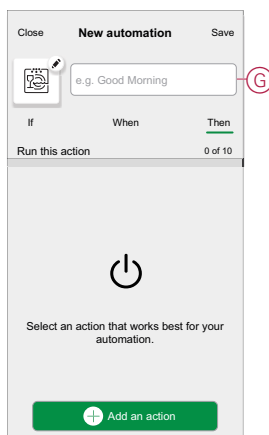



NOTE:

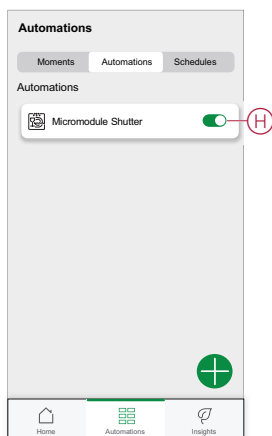
- Max. 10 actions can be added.
- To remove an action, swipe left on the action and tap .

8. Enter the automation name (G).

You can choose the cover image that represents your automation by tapping




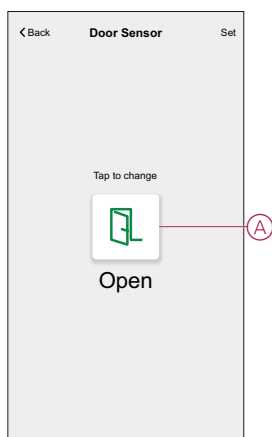
9. Tap **Save**.
Once the automation is saved, it is visible on the **Automation** tab.
Using the  (H) you can enable or disable the automation.



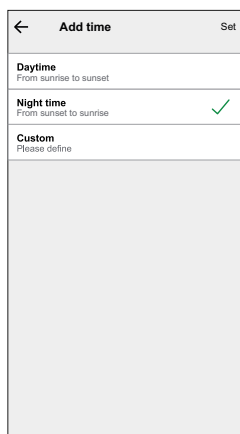
Example of an automation

This demonstration shows you how to create automation that Closes the Shutter when the Door is open during Night time.

1. Go to **Automation** >  to create an automation.
2. To add a condition, tap **Add Condition** > **Device status change** > **Door Sensor**, tap (A) to **Open**, then tap **Set**.

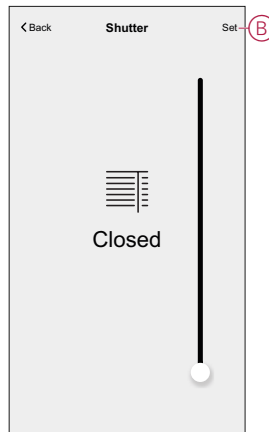


3. Read the information and tap **OK**.
4. To set the time, tap **When** > **Add time** > **Period of time** > **Night time** > **Set**.




5. To add an action, tap **Then** > **Add an action** > **Control a device** > **Micromodule Shutter** > **Set** (B).

TIP: You can set the required opening/closing percentage or fully open/closed state using the sliding bar.



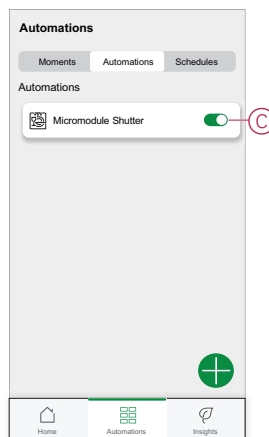
6. Read the information and tap **OK**.


7. Enter the name of the automation.

TIP: You can choose the cover image that represents your automation by tapping .

8. Tap **Save**.


Once the automation is saved, it is visible on the **Automation** tab.



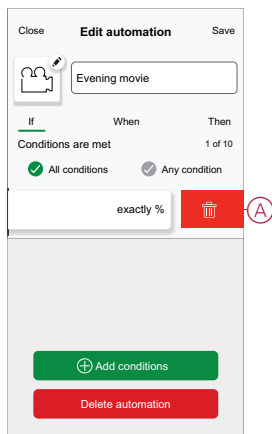
NOTE: You can enable or disable automations on the **Automation** tab by using  (C).

Editing an automation

To edit an automation:

1. On the **Home** page, tap .
2. Go to **Automation**, tap the automation you want to edit.
3. On the **Edit automation** page, you can:
 - Change the icon.
 - Rename the automation.
 - Change/Delete the condition or action.


- Remove the Condition or Action by swiping it to the left and tapping the **bin** (A).

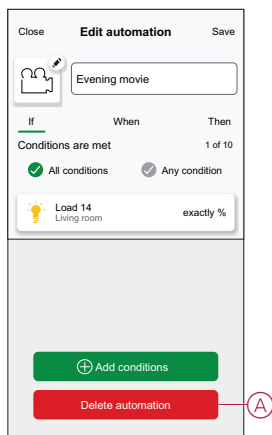


- Add a new condition or action and then tap **Save**.

Deleting an automation


To delete an automation:

- On the **Home** page, tap .
- Go to **Automation**, tap the automation you want to delete .
- On the Edit automation page, tap **Delete Automation** (A) and tap **Ok**.

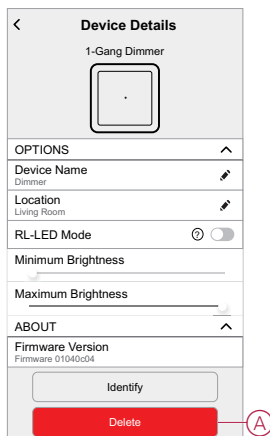


Removing the device

Using the Wisier Home app, you can remove the 1-gang dimmer from the system.
To remove the 1-gang dimmer:

- On the Home page, tap .

2. Tap **Devices > 1-gang Dimmer > Delete (A)**.



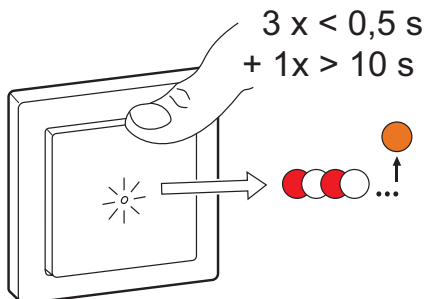
Resetting the device

You can reset the pushbutton to the factory default. It can be reset manually at any time, e.g., when the Hub is replaced.

Short press the top-center pushbutton 3 times and hold for 10 seconds to reset the device to the factory default mode.



TIP: In case of the 2-gang pushbutton, short press the top-right pushbutton 3 times and hold for 10 seconds to reset the device to the factory default mode.

NOTE: All configuration data, user data and network data are deleted.





LED indications

Pairing the device

User Action	LED Indication	Status
Press the push button 3 times	LED blinks amber, once per second. 	Pairing mode is active for 30 seconds. When pairing is completed, LED displays solid green for a time, before turning Off. 

Resetting the device

User Action	LED Indication	Status
Press the push button 3 times and hold it down once for > 10 s.	After 10 s, the LED starts blinking red. 	The device is in reset mode. It is reset to the factory settings after 10 seconds. The device then restarts, and the LED glows solid orange. 

Troubleshooting

Symptom	Solution
Switch The device is not ready to pair after the device is removed from the app	Reset to factory default settings.
Dimmer Dimming up not possible	<ul style="list-style-type: none"> Reduce or increase load Allow the pushbutton to cool in case of overheating Change the load (if the load is incompatible with the pushbutton)
Switching on not possible	<ul style="list-style-type: none"> Allow the pushbutton to cool in case of overheating Reduce load Change load Check wiring
Flickering at minimum brightness	<ul style="list-style-type: none"> Increase minimum brightness (if flickering still persists, install a 31LCDA load correction device) Change the load (if the minimum brightness is insufficient) Set RL LED mode (it is advised to use 10% of nominal load to avoid overheating of the pushbutton)
Flickering	<ul style="list-style-type: none"> Change load Set RL LED mode (it is advised to use 10% of nominal load to avoid overheating of the pushbutton)
Only slight dimming capability	<ul style="list-style-type: none"> Change dimming range Set RL LED mode (it is advised to use 10% of nominal load to avoid overheating of the pushbutton) Change the load (if the load is incompatible with the pushbutton)
Shutter No shutter movement or uncontrolled shutter movement	<ul style="list-style-type: none"> Check power supply Change the load Change wiring

Technical Data

Display elements:	1, respectively 2 LED (status and orientation)
Operating elements:	2, respectively 4 push-buttons
Operating frequency:	2405-2480 MHz
Max. radio-frequency power transmitted:	< 10 mW
Communication protocol:	Zigbee 3.0 certified

Compliance

Compliance information for Green Premium products

Find and download comprehensive information about Green Premium products, including RoHS compliance and REACH declarations as well as Product Environmental Profile (PEP) and End-of-Life instructions (EOLI).

General information about Green Premium products

Click the link below to read about Schneider Electric's Green Premium product strategy.

<https://www.schneider-electric.com/en/work/support/green-premium/>

Find compliance information for a Green Premium product

Click the link below to search for a product's compliance information (RoHS, REACH, PEP and EOLI).

NOTE: You will need the product reference number or product range to perform the search.

<https://www.reach.schneider-electric.com/CheckProduct.aspx?cskey=ot7n66yt63o1xblflyfj>

Trademarks

This guide makes reference to system and brand names that are trademarks of their relevant owners.

- Zigbee® is a registered trademark of the Connectivity Standards Alliance.
- Apple® and App Store® are brand names or registered trademarks of Apple Inc.
- Google Play™ Store and Android™ are brand names or registered trademarks of Google Inc.
- Wi-Fi® is a registered trademark of Wi-Fi Alliance®.
- Wiser™ is a trademark and the property of Schneider Electric, its subsidiaries and affiliated companies.

Other brands and registered trademarks are the property of their respective owners.

Schneider Electric
35 rue Joseph Monier
92500 Rueil Malmaison
France

+ 33 (0) 1 41 29 70 00

www.se.com

As standards, specifications, and design change from time to time,
please ask for confirmation of the information given in this publication.

© 2021 – 2022 Schneider Electric. All rights reserved.

DUG_Push-button Module, 1-gang/2-gang_WH-01