

# User Manual

## 19.11.1011

### Wireless Charger

#### Technical Specifications

**Type:** Wireless Charger

**Frequency Range:** 110-205 kHz

**Input:** DC 5 V, 2 A /DC 9 V, 1.67 A

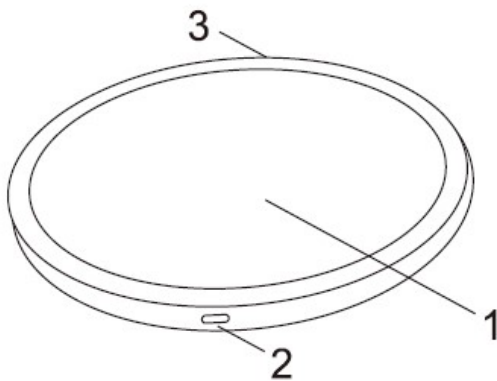
**Output:** DC 5 V, 1 A /DC 9 V, 1.1 A

**Charging Distance:** ≤ 6 mm

**Size:** 100 x 12 mm

**Weight:** 95 g

#### Product Scheme

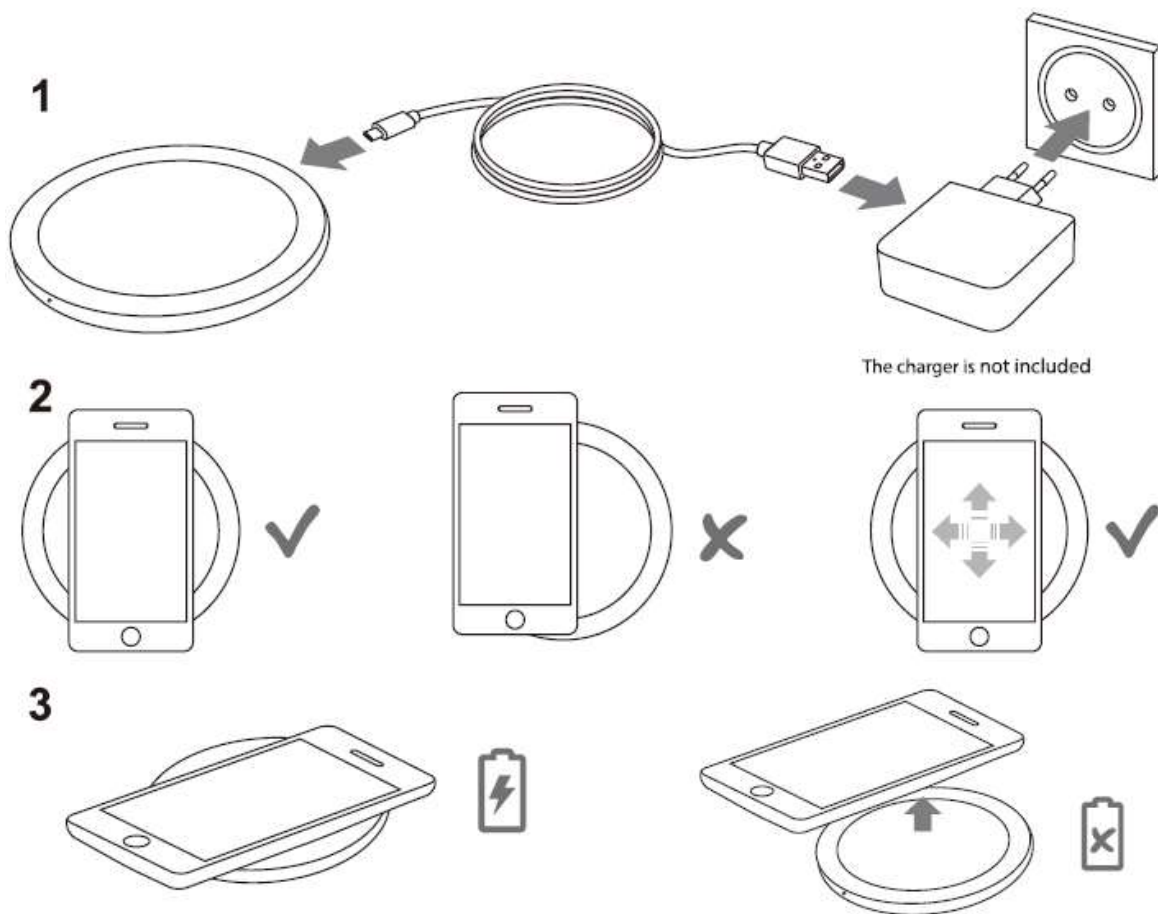


1. Wireless charging area
2. Type C connector
3. LED indicator light

#### General Information

- This charger works with all Qi-compatible devices (please make sure your device is Qi-compatible beforehand).
- Devices are available with built-in or external wireless charging receivers.
- For normal operation, no weaker than DC 5V, 2A charger is required.
- For a fast wireless charging mode, please use Quick Charge 2.0/3.0 compatible charger/smartphones.
- This wireless charger can charge smartphones with non-metal protective cases or silicone covers, which are not thicker than 6mm.

## Using the Wireless Charger



1. Connect the wireless charger with the included or another good performance Type C charging cable to a wall charger and plug the charger into an electric socket.
2. Place the smartphone with the display facing up or another compatible device on the centre of the wireless charger or adjust the placement position until the charging process starts.
  - The white LED light will glow continuously during the charging process.
  - When the chargeable device is placed on the charger in a wrong way, is not accepting the charge or is incompatible, the white LED indicator will start to blink.If the wireless charger or the LED indicator light is not working properly, reconnect the USB charger to the wireless charger.
3. When the smartphone is fully charged, remove it from the wireless charger.
4. To save energy, unplug the charger when not in use.

### Usage Tips

- Do not place any metal objects between the smartphone and the wireless charger – the smartphone may not charge properly.
- To ensure a more efficient charging, remove protective cases from your smartphones.
- Charging time depends on battery capacity, phone input specifications, current, phone energy consumption, phone position on the wireless charger, charging distance, etc.

### Possible causes of wireless charging problems

- Your device is not compatible with the Qi wireless charging standard.
- Your device is placed on the wireless charger in a wrong way. See the manual of your smartphone or other device to find the exact spot of the built-in Qi wireless charging receiver.
- A protective case of the smartphone or another object on the back of the smartphone is blocking the charging process.
- The USB charger is too weak, defective or unplugged from the electric socket.
- The charging cable is unplugged, broken, too long or too weak to function correctly.

#### **Safety Information**

- Do not use damaged power cords or plugs, or loose electrical sockets.
- Do not drop or cause an impact to the device.
- Do not disassemble, modify or repair your device.
- Keep away from humidity and heat.
- Keep it beyond the reach of children.

#### **Waste Electrical and Electronic Equipment (WEEE) Symbol**

The use of the WEEE symbol indicates that this product may not be treated as household waste. By ensuring this product is disposed of correctly, you will help protect the environment. For more detailed information about the recycling of this product, please contact your local authority, your household waste disposal service provider or the shop where you purchased the product.

\*\*\*\*\*

Here you can get a Declaration of Conformity:

SECOMP GmbH

Einsteinstr. 17 – 23

D – 76275 Ettlingen

E-Mail: [hotline@secomp.de](mailto:hotline@secomp.de)