

# SMART HJC 10B Quick Start Guide

ENGLISH

## Ride Connected

Blast your favorite tunes, call handsfree on your Bluetooth mobile phone, listen to voice instructions of GPS navigation by Bluetooth wirelessly, and talk over the intercom in full duplex with a passenger or other riders.



BLUETOOTH 3.0



INTERCOM  
400 M (0.25 MILES)\*



TWO-WAY  
INTERCOM



CUSTOM  
HELMET FIT



ADVANCED NOISE  
CONTROL



MUSIC SHARING

\*: in open terrain

## Getting Started

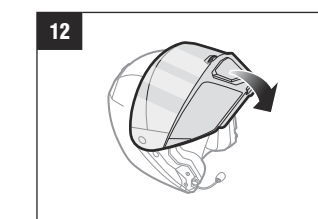
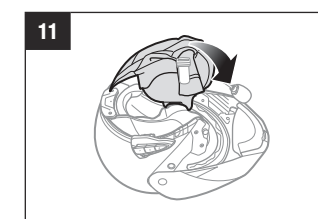
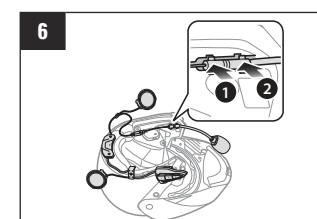
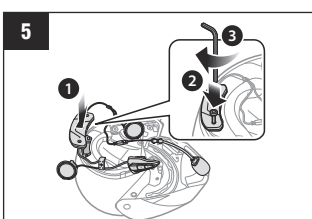
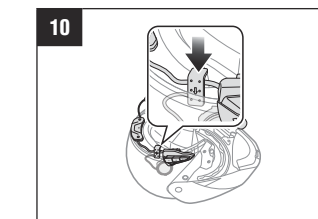
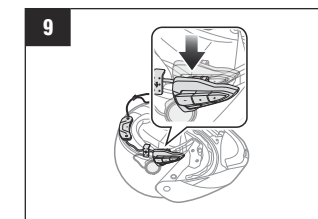
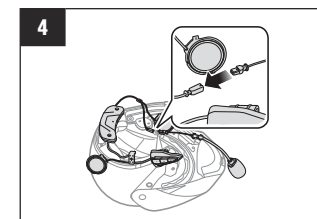
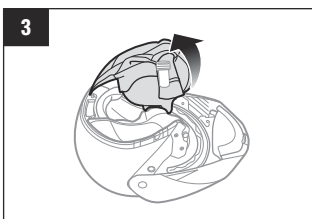
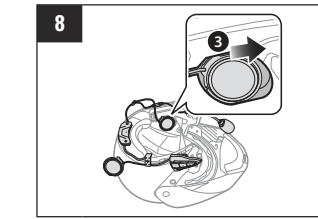
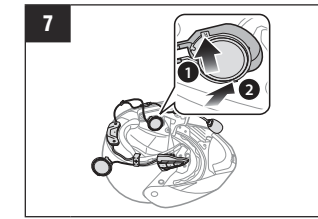
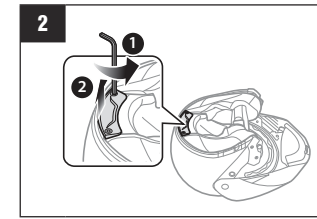
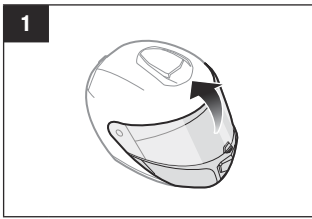
1. This product comes with a Quick Start Guide, which is a basic version of the User's Guide. **A FULL VERSION OF THE USER'S GUIDE CAN BE DOWNLOADED AT [WWW.SMARTHJC.COM/BT](http://WWW.SMARTHJC.COM/BT).**
2. Update this product for free with the latest firmware to fully enjoy the new advanced features built into this product. Visit [www.smarthjc.com/bt](http://www.smarthjc.com/bt) to see how to update your product.



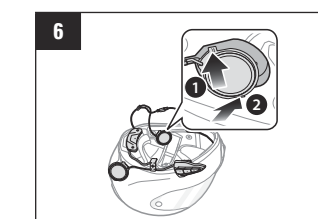
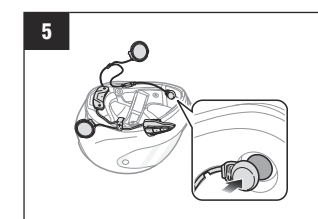
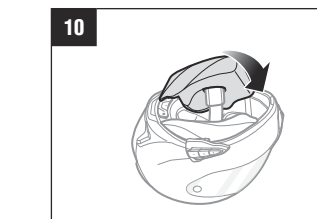
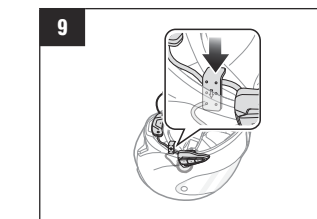
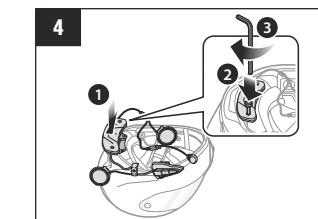
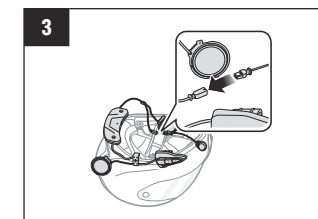
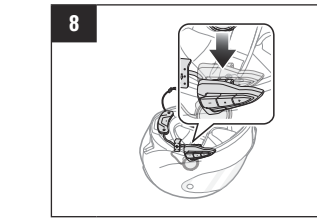
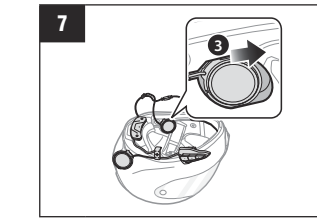
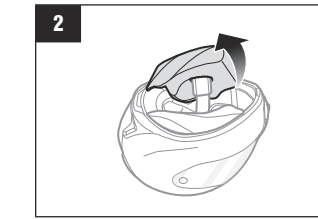
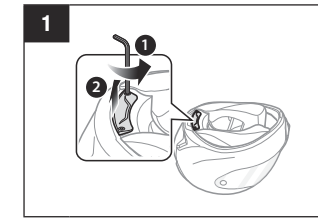
HJC Corporation

hjchelmets.com  
Customer Support: [www.smarthjc.com/bt](http://www.smarthjc.com/bt)

## Modular/Open Face Helmet Installation



## Full Face Helmet Installation

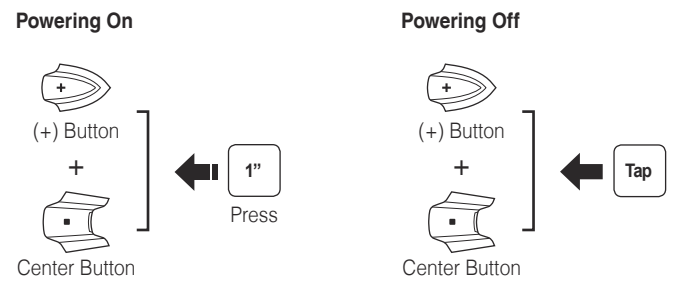


SMART HJC 10B compatible HJC helmets can be found by scanning the QR code of the product box.

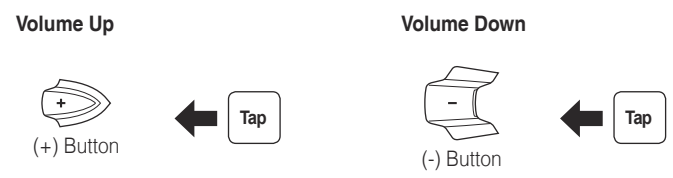
## Button Operation



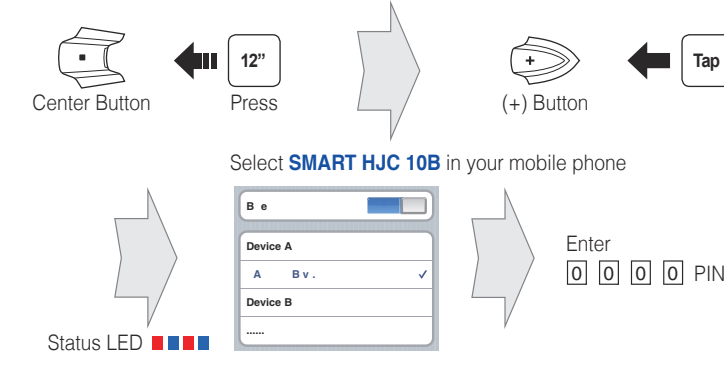
## Power On/Off



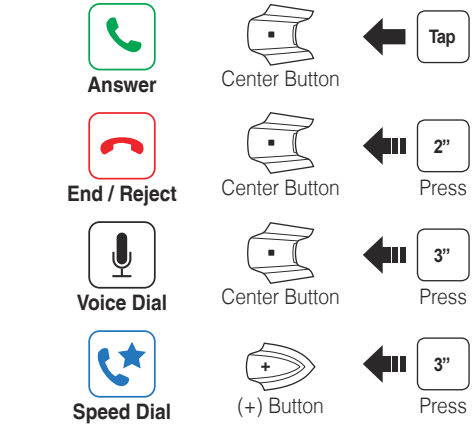
## Volume Adjustment



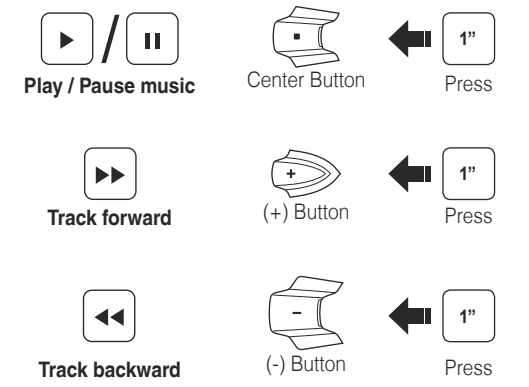
## Bluetooth Pairing Phone, MP3 and GPS



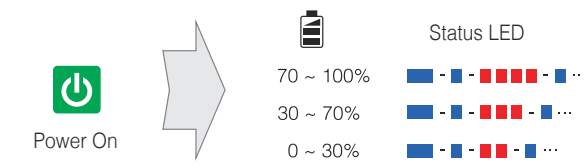
## Mobile Phone



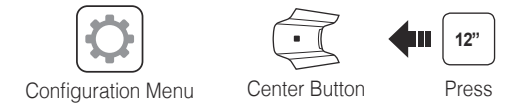
## Music



## Battery Check



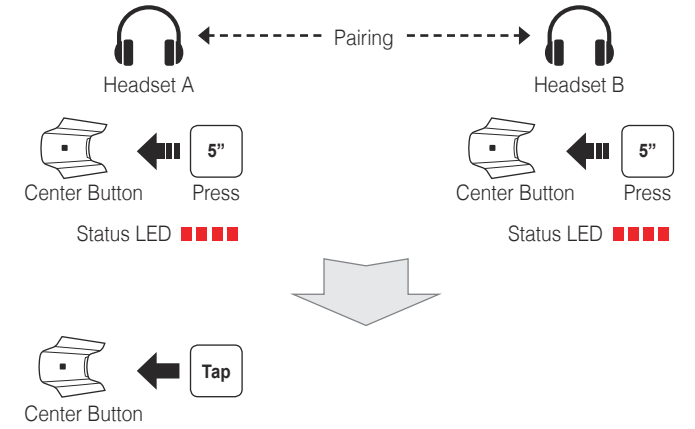
## Configuration Menu



## Using the SMART HJC Device Manager

You can upgrade the headset's firmware and configure its settings directly from your PC or Apple computer. Download the **SMART HJC Device Manager**, please visit [www.smarthjc.com/bt](http://www.smarthjc.com/bt).

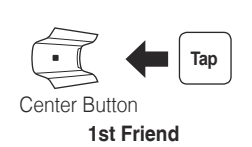
## Intercom Pairing



## Intercom Start



## Intercom End



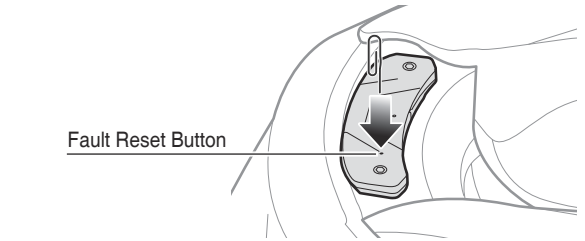
## Troubleshooting

### Factory Reset

If you want to restore the headset to factory default settings, use the Factory Reset in the configuration menu. The headset automatically restores the default settings and turns off.

### Fault Reset

If the headset is not working properly for any reason, reset the headset by gently inserting a paperclip into the pinhole located next to the screw and lightly pressing the Fault Reset Button.



### Battery Charging

Please make sure to take off your headset while charging. The headset automatically turns off during charging.

## Quick Reference

Type	Operation	Button Command
Basic Operations	Power on	Press the (+) Button and the Center Button for 1 second
	Power off	Tap the (+) Button and the Center Button
	Volume adjustment	Tap the (+) Button or the (-) Button
Mobile Phone	Answer phone call	Tap the Center Button
	End/Reject phone call	Press the Center Button for 2 seconds
	Voice dial	Press the Center Button for 3 seconds
	Speed dial	Press the (+) Button for 3 seconds
Music	Play/Pause music	Press the Center Button for 1 second
	Track forward	Press the (+) Button for 1 second
	Track backward	Press the (-) Button for 1 second
Intercom	Intercom pairing	Press the Center Button for 5 seconds
		Tap the Center Button
	Start/End intercom	Tap the Center Button