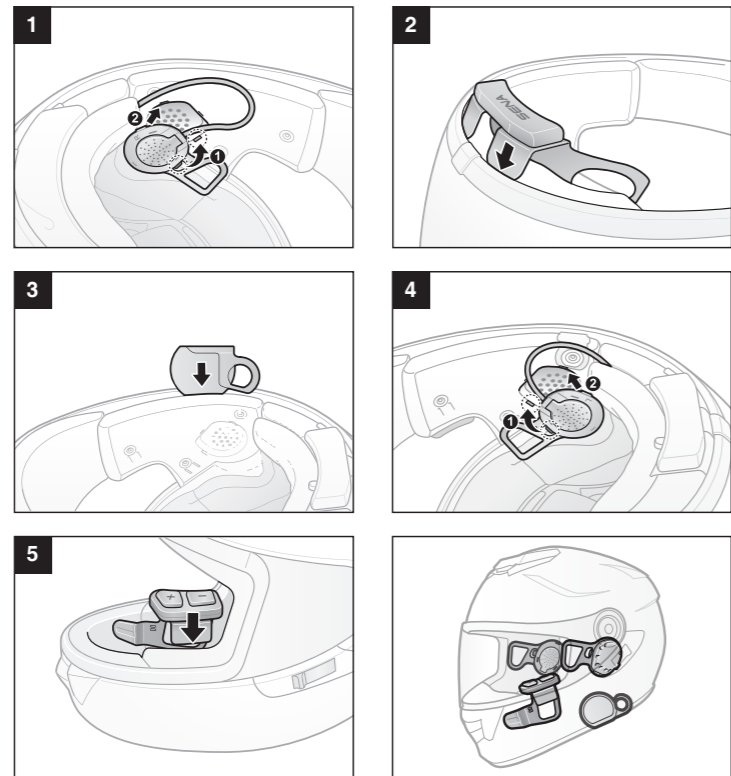
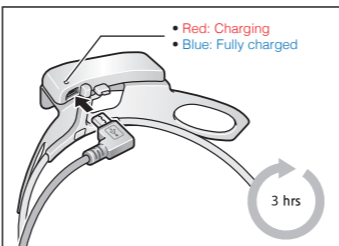


10U for Shoei GT-Air Quick Start Guide

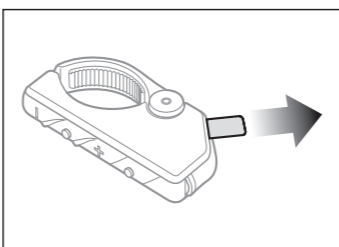
Installation



Charging



Getting Started



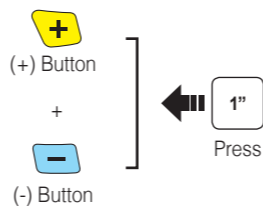
Remove the plastic tape from the battery slot to begin using the Remote Control.

Button Operation

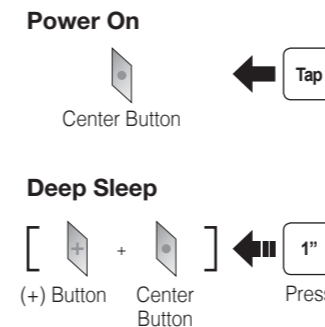


Power On/Off

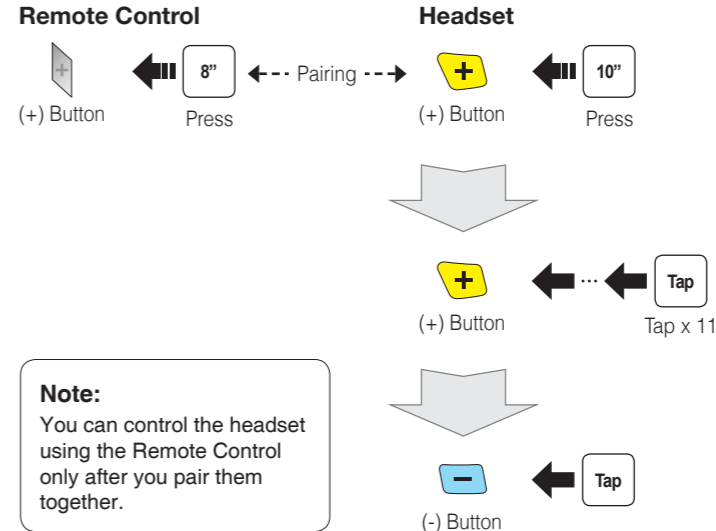
Headset



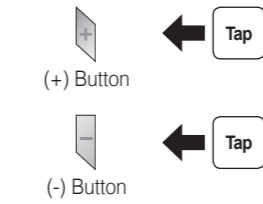
Remote Control



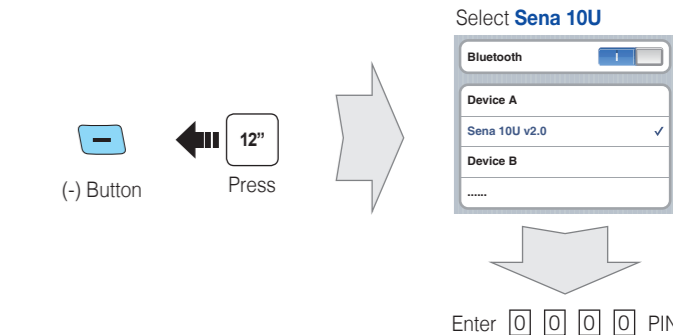
Remote Control Pairing



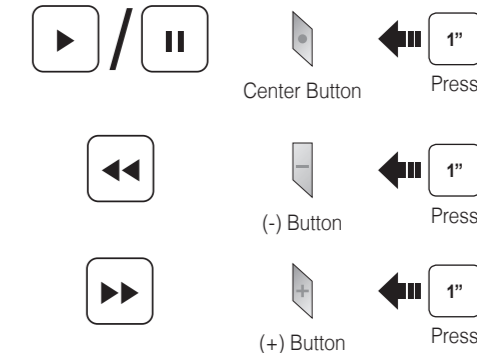
Volume Adjustment



Phone, Music Pairing



Music Operation



Mobile Phone Call Making and Answering

Answer
Center Button Tap

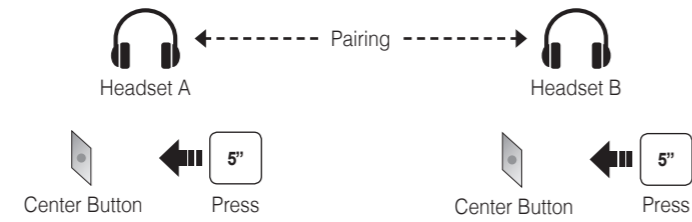
End
Center Button Press 2"

Voice Dial
Center Button Press 3"

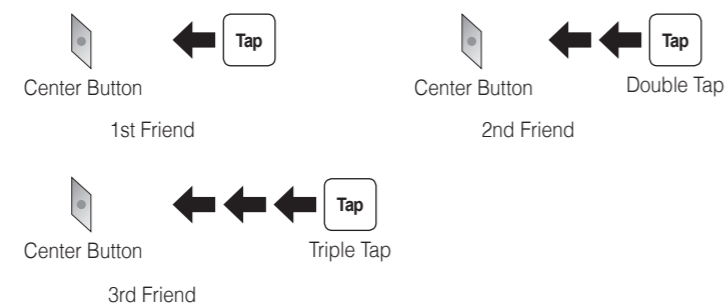
Speed Dial
(+) Button Press 3"

Reject
Center Button Press 2"

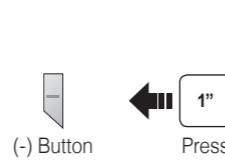
Intercom Pairing



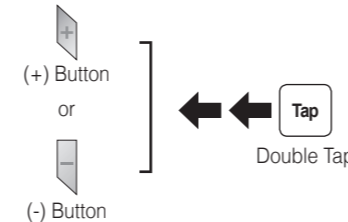
Intercom Start/End



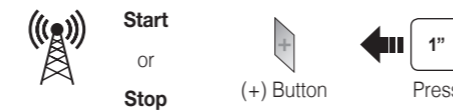
Radio On/Off



Radio Seek Stations



Radio Scan Up FM Band



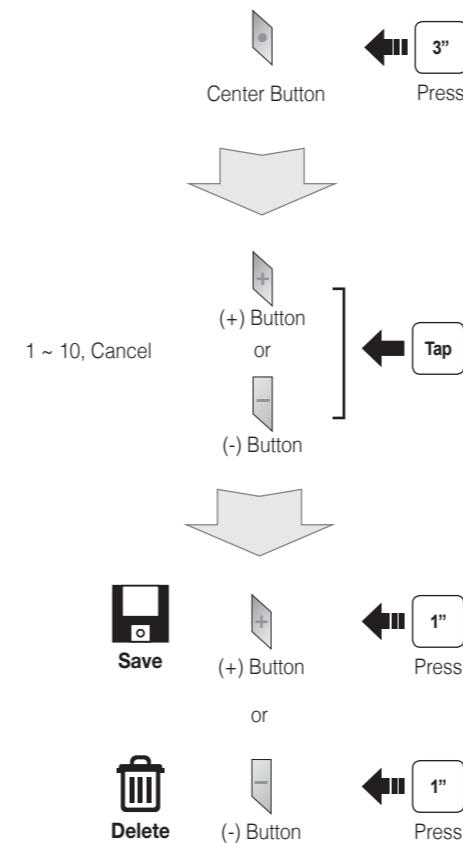
Save to preset while scanning



Radio Move to Preset Station



Radio Save or Delete Preset



Setting

Configuration Menu



Using the Sena Device Manager

Connect the headset to your computer via a USB cable. Launch the Sena Device Manager and click **DEVICE SETTING** to configure the headset settings.

For details about downloading the Sena Device Manager, please refer to the leaflet included in the package.

Using the Sena Smartphone App

1. On your smartphone, download the Sena Smartphone App for Android or iPhone from Google Play or App Store. Please refer to www.sena.com for more details.
2. Pair your smartphone with the headset.
3. Run the Sena Smartphone App. Swipe the screen to the right and tap Setting to configure the headset settings.

Troubleshooting

Remote Control Disconnection

If the Remote Control becomes disconnected with your headset, replace the Remote Control's battery or go through the pairing process again. Meanwhile, you can use the headset control buttons to operate the headset. Please refer to the User's Guide at www.sena.com for details on headset control button operations.

Factory Reset

If you want to restore the 10U to factory default settings, use the Factory Reset in the configuration menu. The headset automatically restores the default settings and turns off.

Fault Reset

If the 10U is not working properly for any reason, reset by gently pushing the pin-hole reset button located on the left speaker.



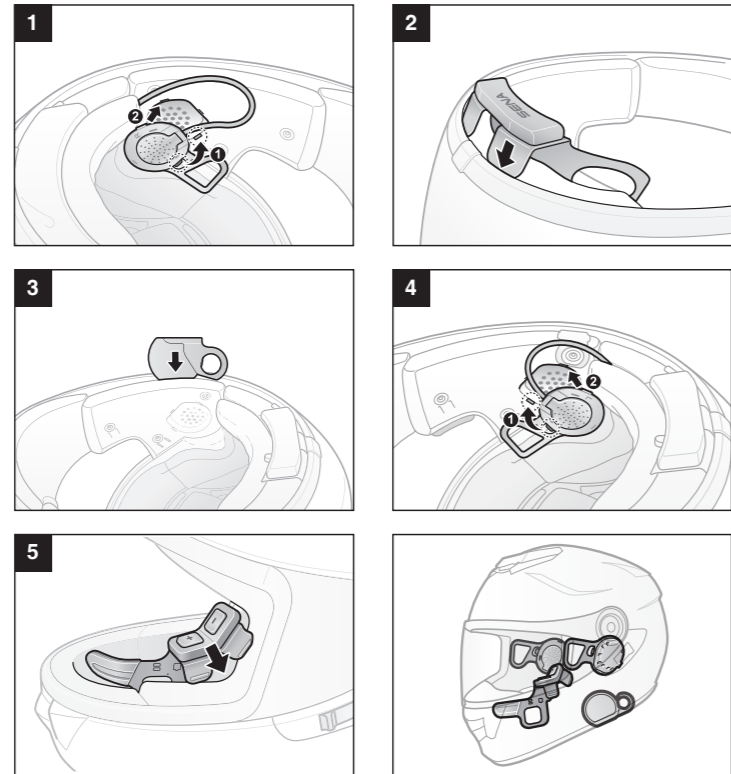
A full version of the manual is downloadable at www.sena.com.



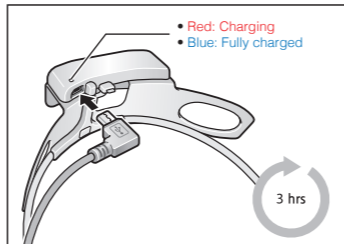
Sena Technologies, Inc.
www.sena.com
Customer Support: support.sena.com

10U for Shoei Neotec Quick Start Guide

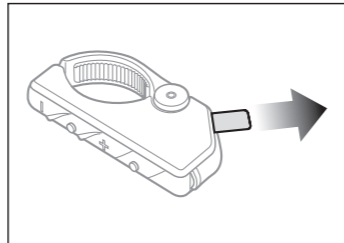
Installation



Charging

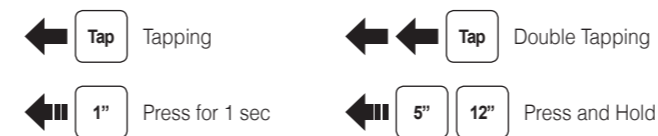


Getting Started

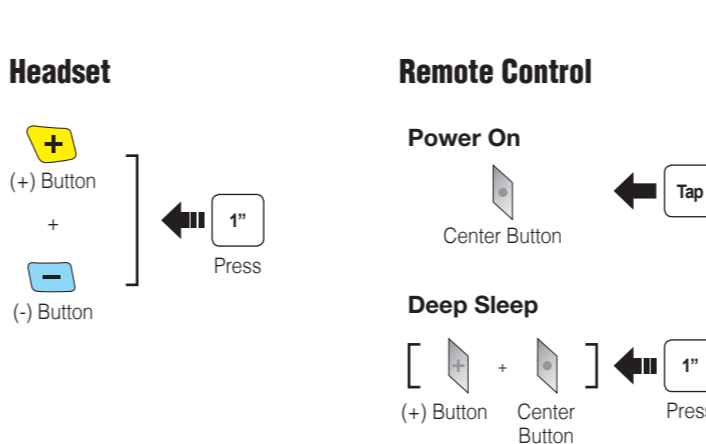


Remove the plastic tape from the battery slot to begin using the Remote Control.

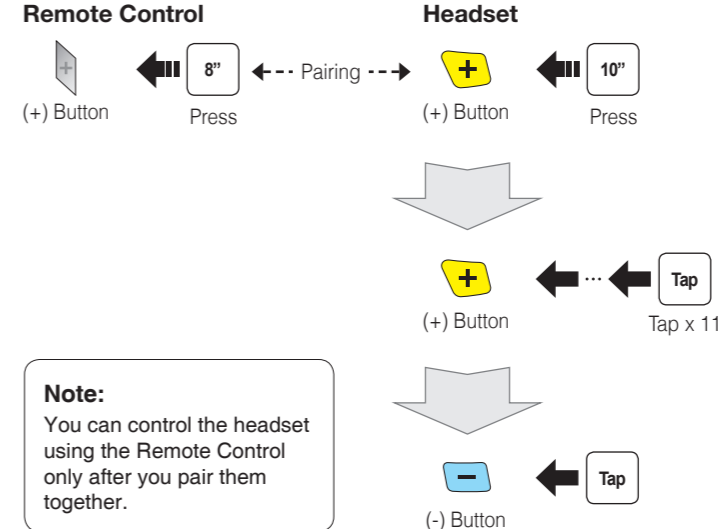
Button Operation



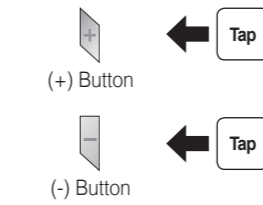
Power On/Off



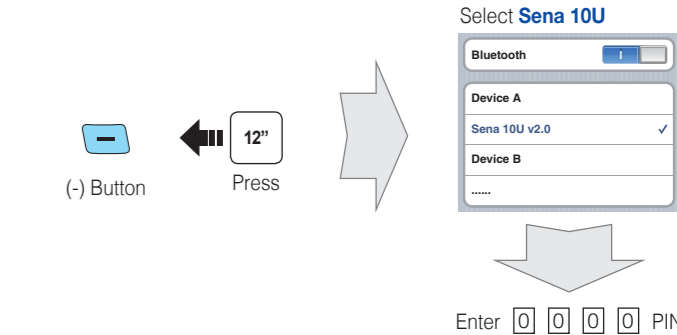
Remote Control Pairing



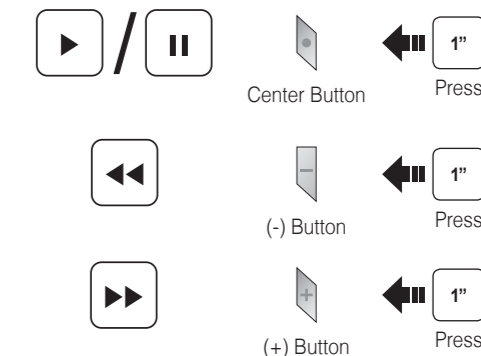
Volume Adjustment



Phone, Music Pairing



Music Operation



Mobile Phone Call Making and Answering

Answer
Center Button Tap

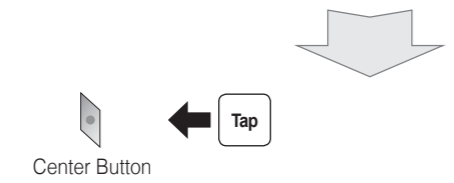
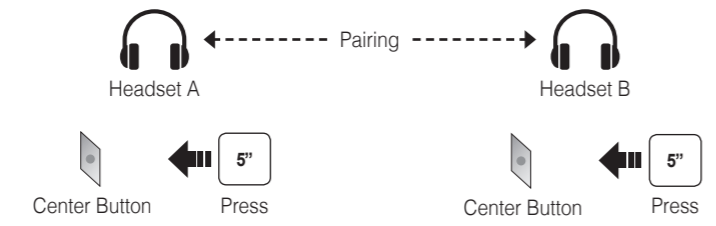
End
Center Button Press 2"

Voice Dial
Center Button Press 3"

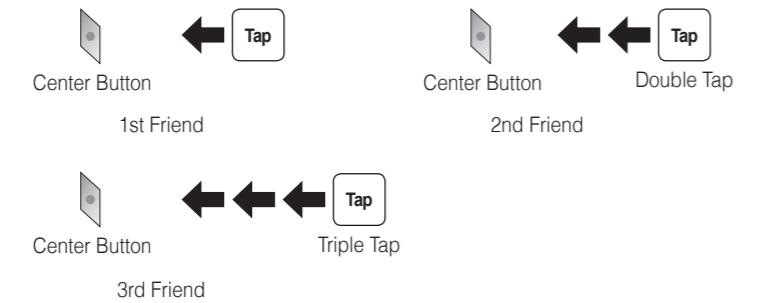
Speed Dial
(+) Button Press 3"

Reject
Center Button Press 2"

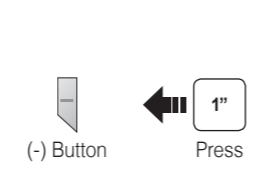
Intercom Pairing



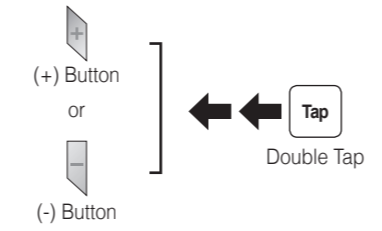
Intercom Start/End



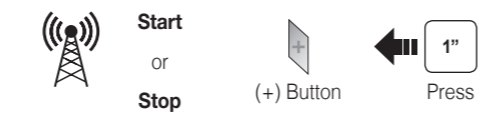
Radio On/Off



Radio Seek Stations



Radio Scan Up FM Band



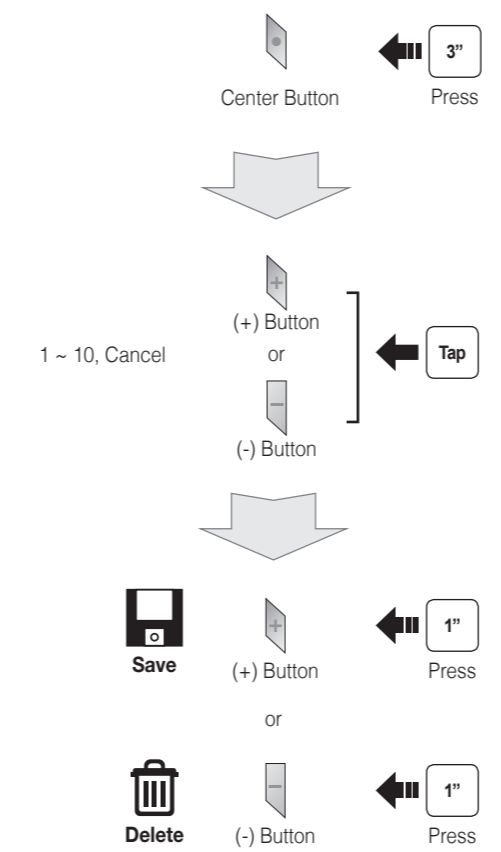
Save to preset while scanning



Radio Move to Preset Station



Radio Save or Delete Preset



Setting

Configuration Menu



Using the Sena Device Manager

Connect the headset to your computer via a USB cable. Launch the Sena Device Manager and click **DEVICE SETTING** to configure the headset settings.

For details about downloading the Sena Device Manager, please refer to the leaflet included in the package.

Using the Sena Smartphone App

1. On your smartphone, download the Sena Smartphone App for Android or iPhone from Google Play or App Store. Please refer to www.sena.com for more details.
2. Pair your smartphone with the headset.
3. Run the Sena Smartphone App. Swipe the screen to the right and tap Setting to configure the headset settings.

Troubleshooting

Remote Control Disconnection

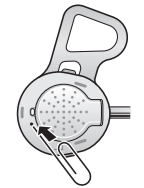
If the Remote Control becomes disconnected with your headset, replace the Remote Control's battery or go through the pairing process again. Meanwhile, you can use the headset control buttons to operate the headset. Please refer to the User's Guide at www.sena.com for details on headset control button operations.

Factory Reset

If you want to restore the 10U to factory default settings, use the Factory Reset in the configuration menu. The headset automatically restores the default settings and turns off.

Fault Reset

If the 10U is not working properly for any reason, reset by gently pushing the pin-hole reset button located on the left speaker.

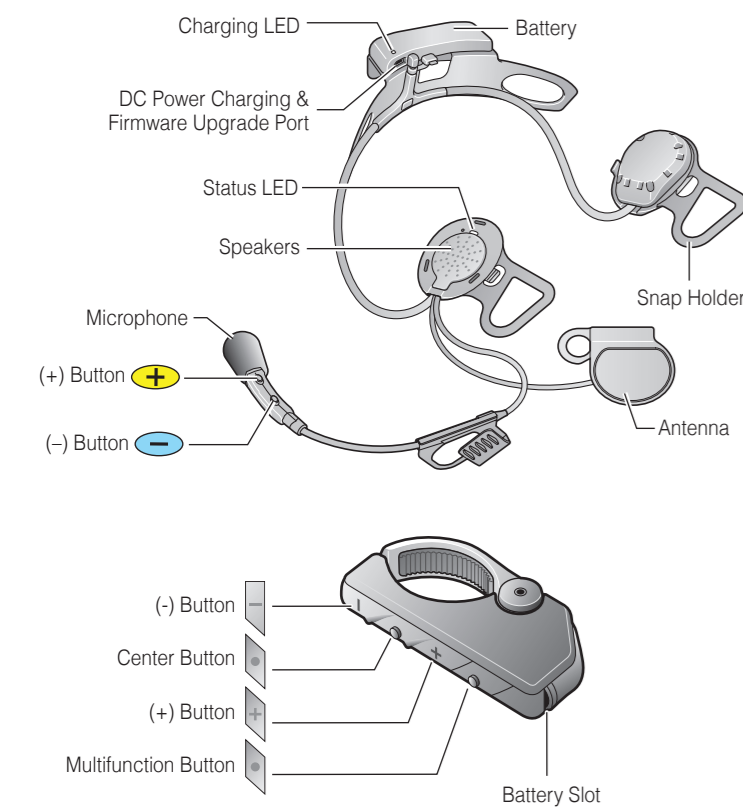


A full version of the manual is downloadable at www.sena.com.

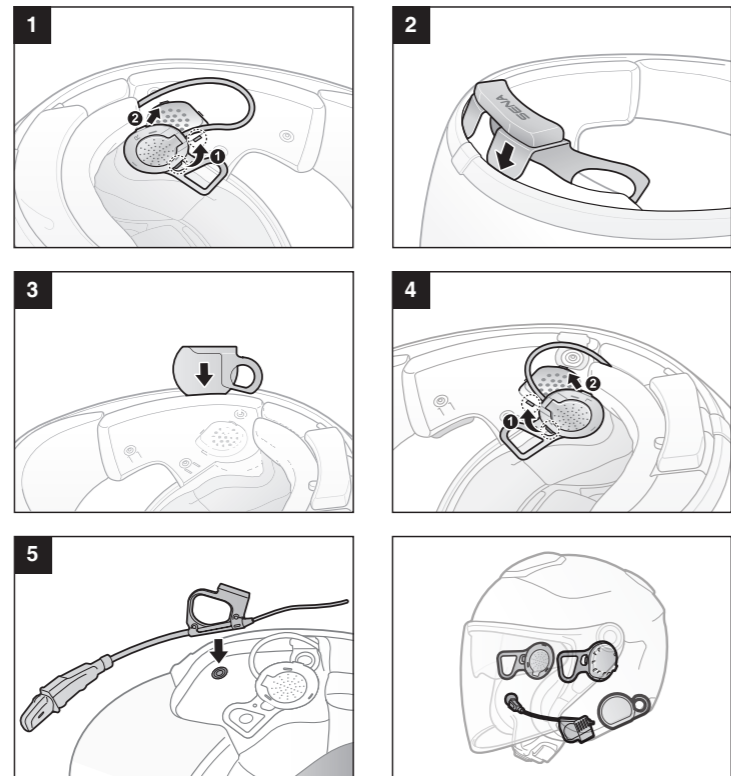


Sena Technologies, Inc.
www.sena.com
 Customer Support: support.sena.com

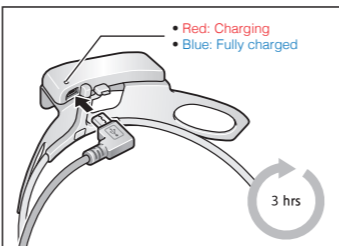
10U for Shoei J-Cruise Quick Start Guide



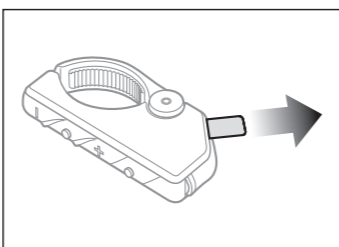
Installation



Charging



Getting Started



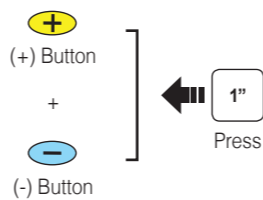
Remove the plastic tape from the battery slot to begin using the Remote Control.

Button Operation

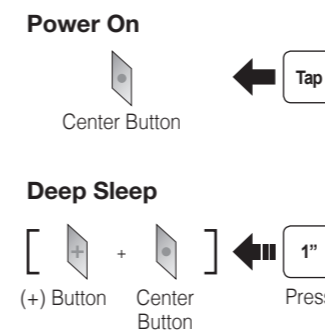


Power On/Off

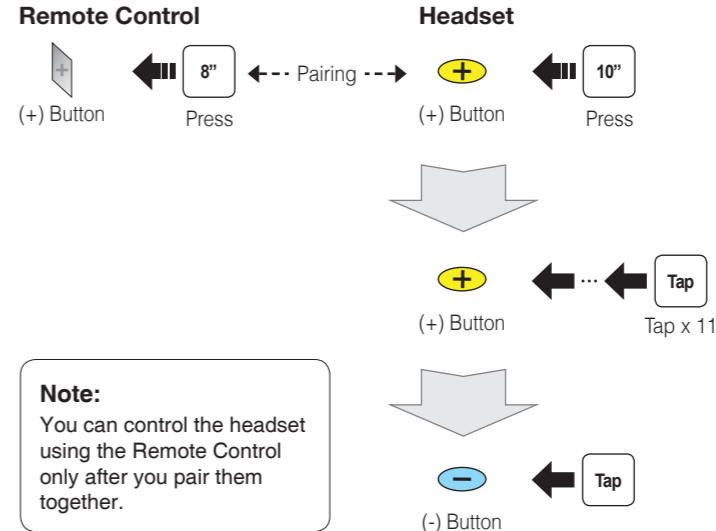
Headset



Remote Control

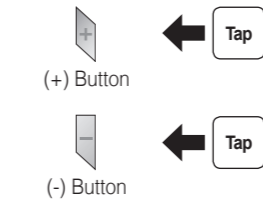


Remote Control Pairing

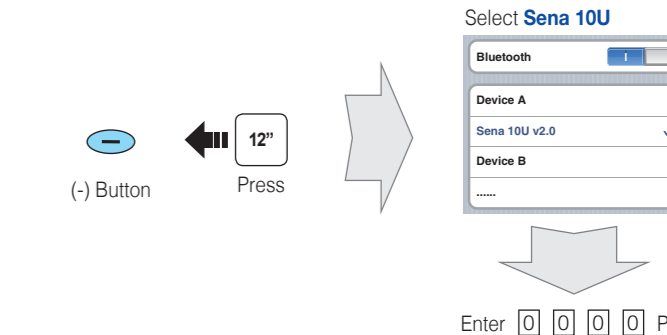


Note: You can control the headset using the Remote Control only after you pair them together.

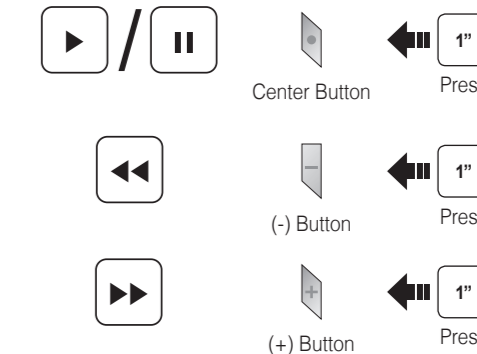
Volume Adjustment



Phone, Music Pairing



Music Operation



Mobile Phone Call Making and Answering

Answer
Center Button Tap

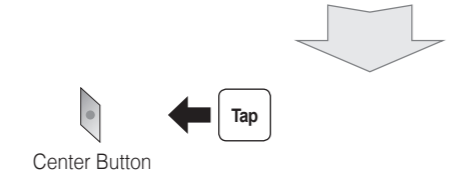
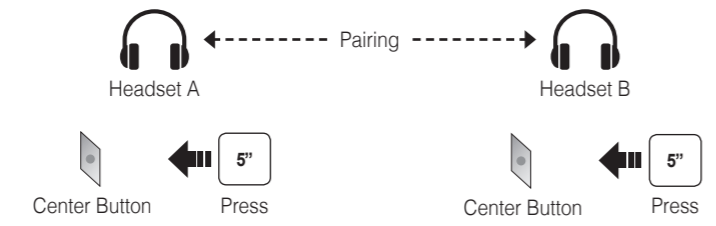
End
Center Button Press 2"

Voice Dial
Center Button Press 3"

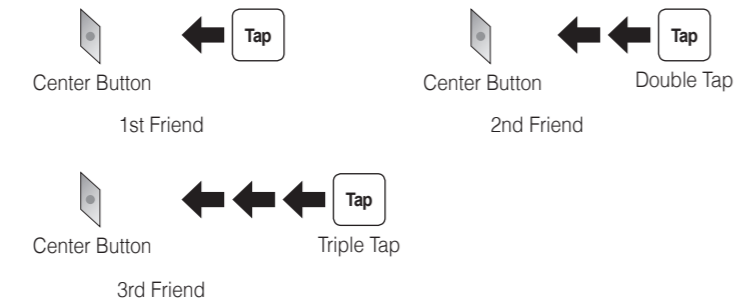
Speed Dial
(+) Button Press 3"

Reject
Center Button Press 2"

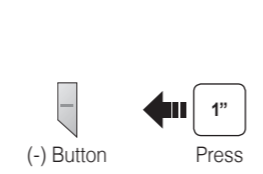
Intercom Pairing



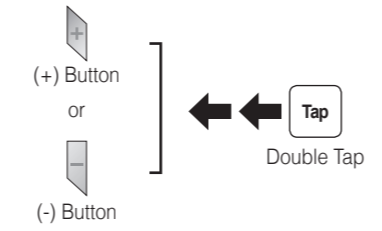
Intercom Start/End



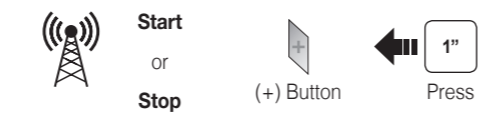
Radio On/Off



Radio Seek Stations



Radio Scan Up FM Band



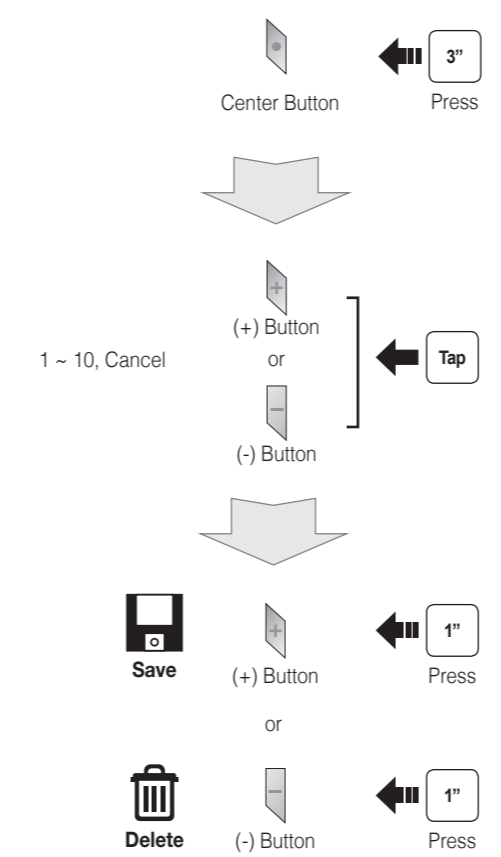
Save to preset while scanning



Radio Move to Preset Station



Radio Save or Delete Preset



Setting

Configuration Menu



Using the Sena Device Manager

Connect the headset to your computer via a USB cable. Launch the Sena Device Manager and click **DEVICE SETTING** to configure the headset settings.

For details about downloading the Sena Device Manager, please refer to the leaflet included in the package.

Using the Sena Smartphone App

1. On your smartphone, download the Sena Smartphone App for Android or iPhone from Google Play or App Store. Please refer to www.sena.com for more details.
2. Pair your smartphone with the headset.
3. Run the Sena Smartphone App. Swipe the screen to the right and tap Setting to configure the headset settings.

Troubleshooting

Remote Control Disconnection

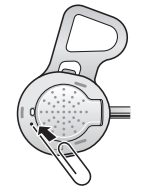
If the Remote Control becomes disconnected with your headset, replace the Remote Control's battery or go through the pairing process again. Meanwhile, you can use the headset control buttons to operate the headset. Please refer to the User's Guide at www.sena.com for details on headset control button operations.

Factory Reset

If you want to restore the 10U to factory default settings, use the Factory Reset in the configuration menu. The headset automatically restores the default settings and turns off.

Fault Reset

If the 10U is not working properly for any reason, reset by gently pushing the pin-hole reset button located on the left speaker.

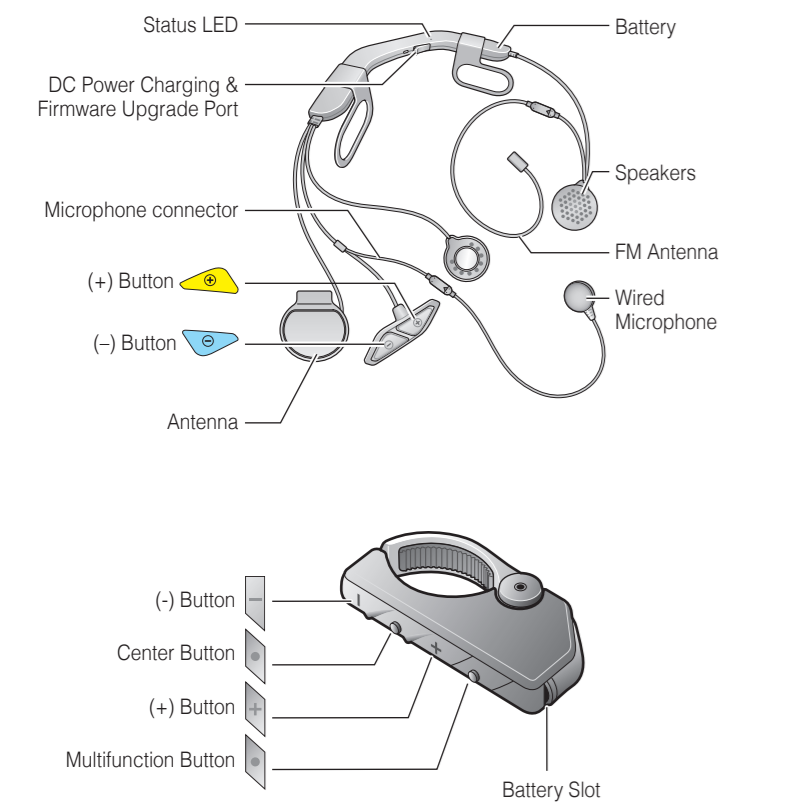


A full version of the manual is downloadable at www.sena.com.

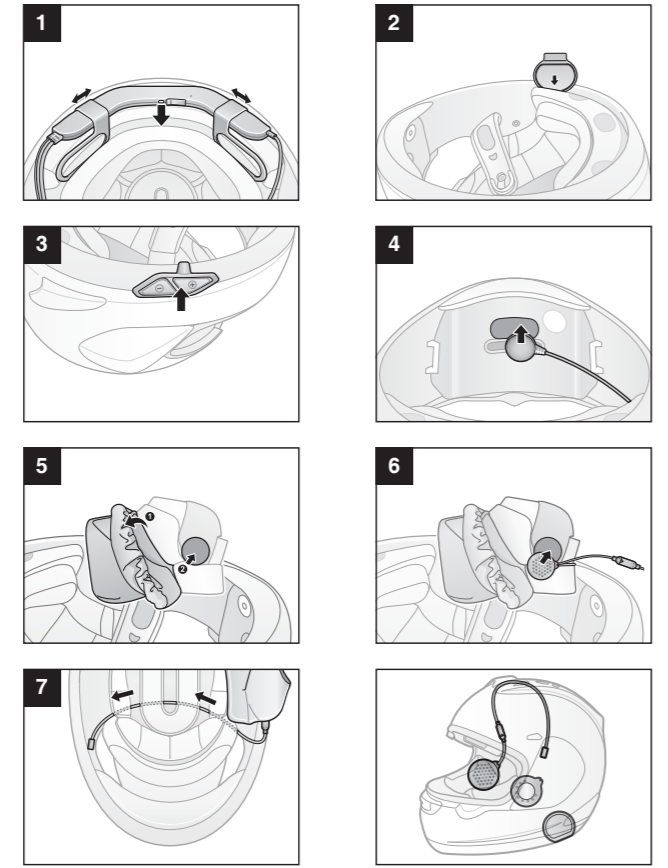


Sena Technologies, Inc.
www.sena.com
Customer Support: support.sena.com

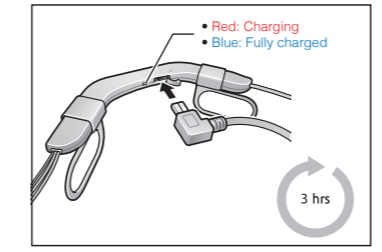
10U for Arai Full-face Helmets Quick Start Guide



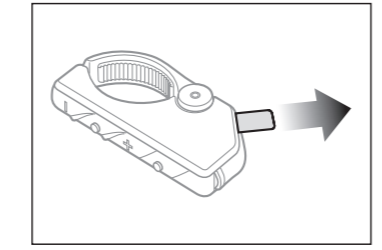
Installation



Charging

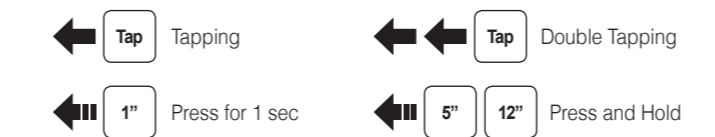


Getting Started

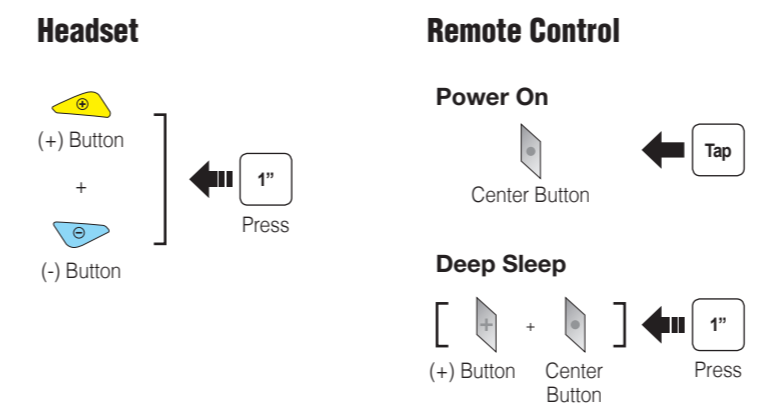


Remove the plastic tape from the battery slot to begin using the Remote Control.

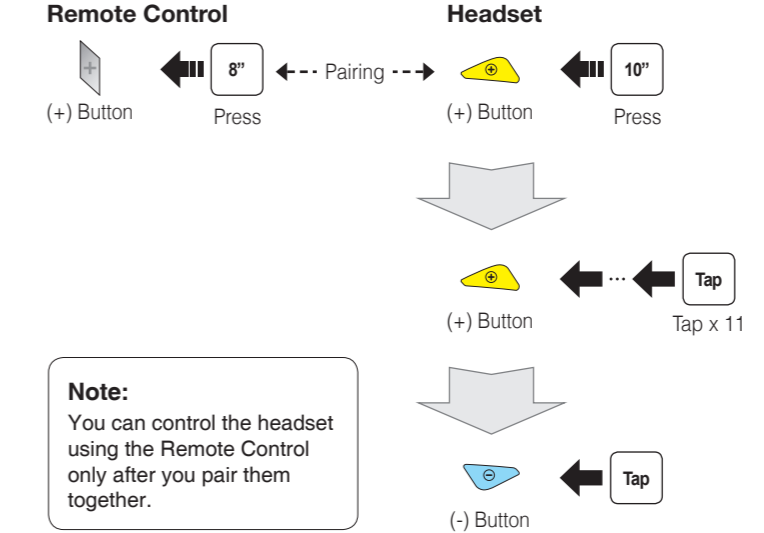
Button Operation



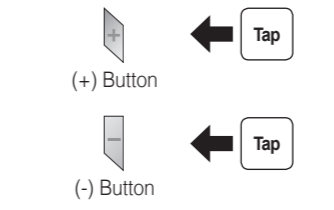
Power On/Off



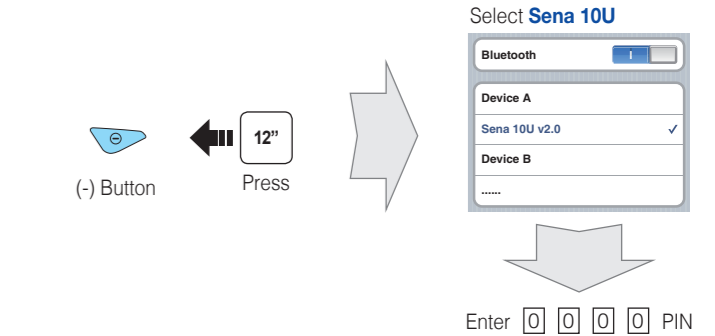
Remote Control Pairing



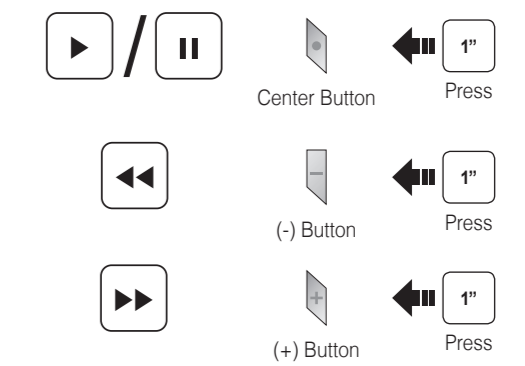
Volume Adjustment



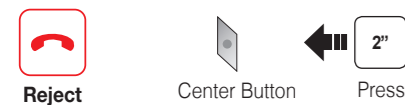
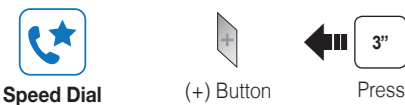
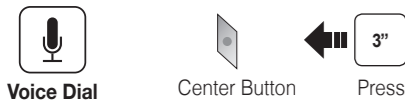
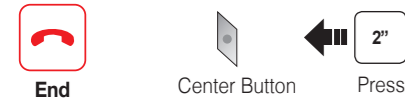
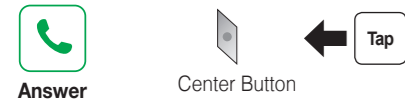
Phone, Music Pairing



Music Operation



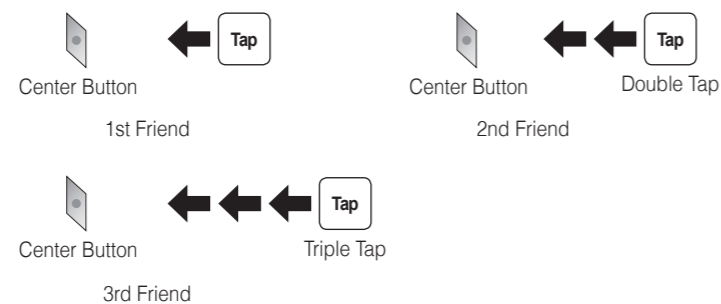
Mobile Phone Call Making and Answering



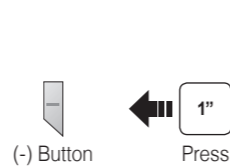
Intercom Pairing



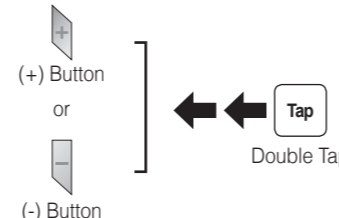
Intercom Start/End



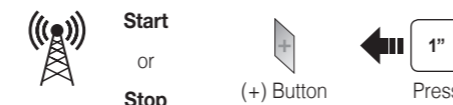
Radio On/Off



Radio Seek Stations



Radio Scan Up FM Band



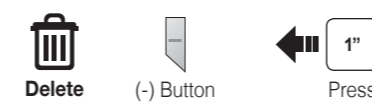
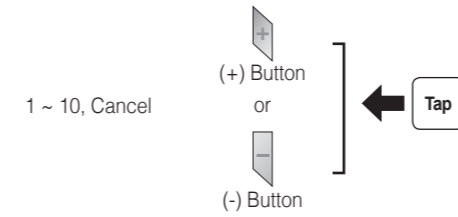
Save to preset while scanning



Radio Move to Preset Station



Radio Save or Delete Preset



Setting

Configuration Menu



Using the Sena Device Manager

Connect the headset to your computer via a USB cable. Launch the Sena Device Manager and click **DEVICE SETTING** to configure the headset settings.

For details about downloading the Sena Device Manager, please refer to the leaflet included in the package.

Using the Sena Smartphone App

1. On your smartphone, download the Sena Smartphone App for Android or iPhone from Google Play or App Store. Please refer to www.sena.com for more details.
2. Pair your smartphone with the headset.
3. Run the Sena Smartphone App. Swipe the screen to the right and tap Setting to configure the headset settings.

Troubleshooting

Remote Control Disconnection

If the Remote Control becomes disconnected with your headset, replace the Remote Control's battery or go through the pairing process again. Meanwhile, you can use the headset control buttons to operate the headset. Please refer to the User's Guide at www.sena.com for details on headset control button operations.

Factory Reset

If you want to restore the 10U to factory default settings, use the Factory Reset in the configuration menu. The headset automatically restores the default settings and turns off.

Fault Reset

If the 10U is not working properly for any reason, reset by gently pushing the pin-hole reset button located on the battery.



A full version of the manual is downloadable at www.sena.com.

