

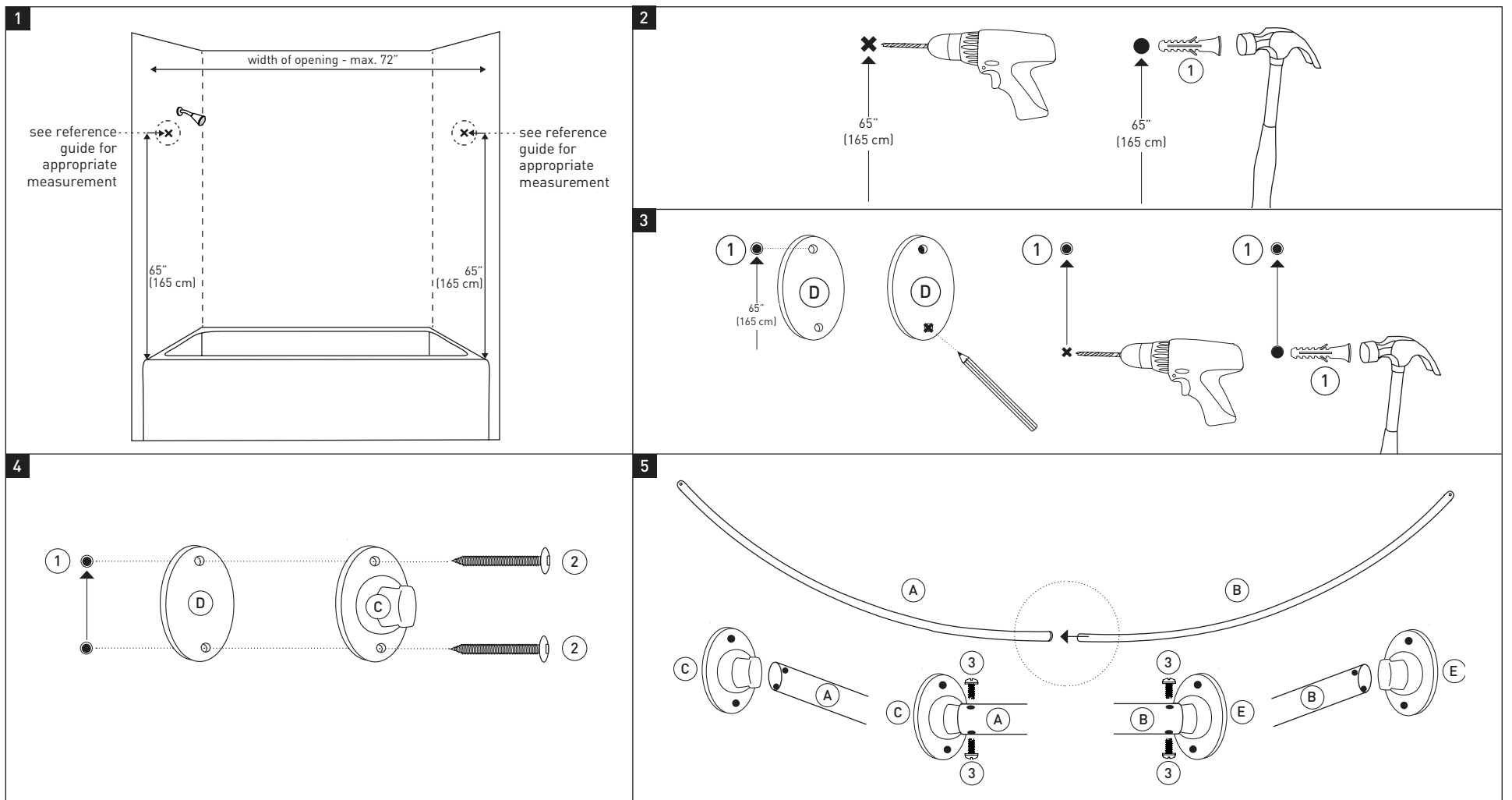
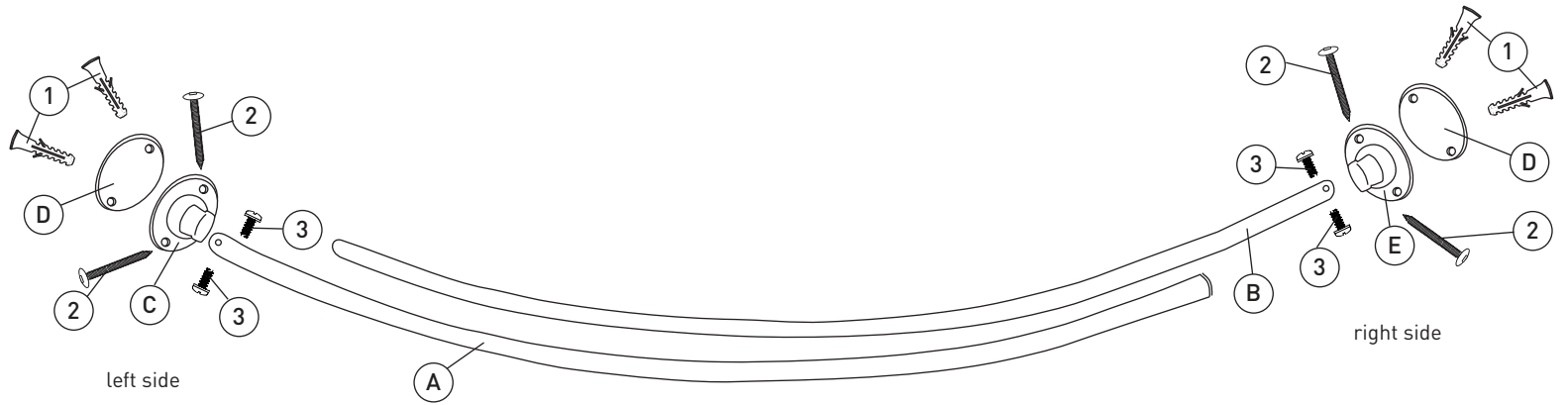
- Expands to 72" (182.8 cm).
- Provides 25% more shower space and over 8" more elbow room than standard shower rods.

Tools required:

- Measuring tape
- Pencil
- 3/16" (5 mm) drill bit
- Drill
- Hammer
- Phillips screwdriver

This box contains:

- Ⓐ larger rod (1)
- Ⓑ smaller rod (1)
- Ⓒ left bracket (1)
- Ⓓ plastic supports (2)
- Ⓔ right bracket (1)
- ① anchors (4)
- ② large stainless steel screws 1.25" (31.75 mm) (4)
- ③ small stainless steel screws .375" (9.5 mm) (4)



1 MEASUREMENTS

- Lay out all components on a soft surface to protect the finish. Ensure your tub width does not exceed 72".
- From the front edge of your tub, measure 65" above ledge of tub on both sides.
- Measure the appropriate distance (as shown in the reference guide) from the 65" (165 cm) mark towards the back of the tub. Maintaining the same 65" (165 cm) height, make a mark. This is the first drilling position.
- Repeat on the right side of your tub.

2 POSITION TOP ANCHORS

- On each side of the tub, drill a hole into dry wall or tile where marked using a 3/16" (5 mm) drill bit.
- Using a hammer, "gently" tap the anchor (1) into the hole all the way so the edge is flush to the wall.

3 POSITION BOTTOM ANCHORS

- Align the top hole of a plastic support (D) to the top anchor that is now in the wall.
- Mark your bottom hole through the plastic support (D), making sure that the support is perfectly straight.
- Drill the bottom hole where marked. With your hammer "gently" tap the anchor (1) into the hole all the way so the edge is flush to the wall.

4 INSTALL BRACKETS

- Apply the left bracket (C) over the plastic support (D). Make sure the bracket (C) points outwards from the tub. Position both components over the wall anchors (1).
- Using a Phillips screwdriver, insert both large screws (2) into the anchors (1) through the bracket and tighten.
- Repeat on right side of tub using right bracket (E).

5 INSTALL ROD

- Insert smaller rod (B) into larger rod (A), with the smaller rod (B) on the right. The ends with the holes will be on the outside edges of the finished rod.
- Position the left side of the rod (A) over the left bracket (C) and use the small screws (3) to securely fasten the rod to the bracket. Repeat on the right side (B) of the rod using right bracket (E).

YOUR INSTALLATION IS NOW COMPLETE.



Safety Precautions

- **For your child's safety:** Do not allow your children to climb, swing, or hang on the curtain attached to the rod or from the rod itself.
- This curved rod is not designed for a person to pull or lean against, either directly or indirectly.
- This is a durable product designed for years of service under normal shower conditions.
- To clean your curved shower rod, wipe with a damp cloth.
- Taymor assumes no liability for any damage or injury caused by improper assembly, installation or use of this product

REFERENCE GUIDE

WIDTH OF OPENING	DISTANCE FROM FRONT EDGE OF THE TUB
for 52" (132 cm) - 60" (152 cm) tub openings	5" (13 cm)
for 61" (155 cm) - 66" (168 cm) tub openings	6.5" (16.5 cm)
for 67" (170 cm) - 72" (183 cm) tub openings	8" (20 cm)