

SPECIFICATIONS



Model	OPA 1410RLTM4FPQD(-Z) Econex Pro
Configuration	Horizontal Supply Air
Item No. (Standard / Opposite Hand)	876-141-701 / 876-141-710
Unit c/w Economiser (Standard / Opposite Hand)	877-141-701 / 877-141-710
Configuration	Downward Supply Air
Item No. (Standard / Opposite Hand)	876-141-723 / 876-141-732
Unit c/w Economiser (Standard / Opposite Hand)	877-141-723 / 877-141-732
Cooling capacity (net) ¹	146 kW
Cooling capacity (gross) range	11.8 ~ 189 kW
Heating capacity ¹	145 kW
Heating capacity (gross) range	12.9 ~ 181 kW
Electrical input - cooling	45.1 kW
Electrical input - heating	43.2 kW
EER / AEER (cooling) ¹	3.24 / 3.22
COP / ACOP (heating) ¹	3.35 / 3.34
Operating Range (outdoor ambient) - cooling	-10°C ~ 50°C
Operating Range (outdoor ambient) - heating	-10°C ~ 25°C
Master Controller	<i>c.pCO</i>
Slave Controllers	UC8 (x4)
Refrigerant	R32
Refrigerant Charge	7.1 kg/sys. 27 m ² / 6 m ²
Minimum floor area (@2.4m/5m below ceiling diffuser)	POE-46 (NXG5020 or equivalent)
Compressor oil type	Inverter scroll (x4)
Compressor type	
Power supply ²	3 ph. 400V ac 50Hz + N + E
Compressor (3ph.) run amps at rating cond.	14.7 A/ph. (x4)
Compressor circuit breaker	50 A (x4)
Indoor fan motor size	EC Plug 3.65kW (x4)
Nominal air flow at rating conditions	8 100 l/s
Indoor fan motor (3ph.)	4.6 A/ph. (x4)
Outdoor fan motor (3ph.) - full load	1.9 A/ph. (x4)
Outdoor fan motor – max. ext. static pressure available	120 Pa (@12,100 l/s)
Control circuit breaker (internal)	4 A
Auxiliary power outlet (1ph.) overload setting	10 A
Running amps (total system)	69 / 67 / 74 A
Max. running amps (total system)	116 / 111 / 121 A
RCD type recommended	type B, 30mA, 3 pole
Net weight	2064 kg
Shipping weight (excl. cowl)	2204 kg
Net weight c/w Economiser	2154 kg

Accessories:

Remote wired Service Interface Device (<i>pGD1</i>)	201-000-379
Filters - rated EU4/G4 disposable	019-400-005 600x500x50 (x3) ³ 019-400-007 600x600x50 (x6)
Filters - rated EU4/G4 washable (NZ only)	019-000-034 600x500x50 (x3) ³ 019-000-031 600x600x50 (x6)

¹ Tested in accordance with AS/NZS 3823

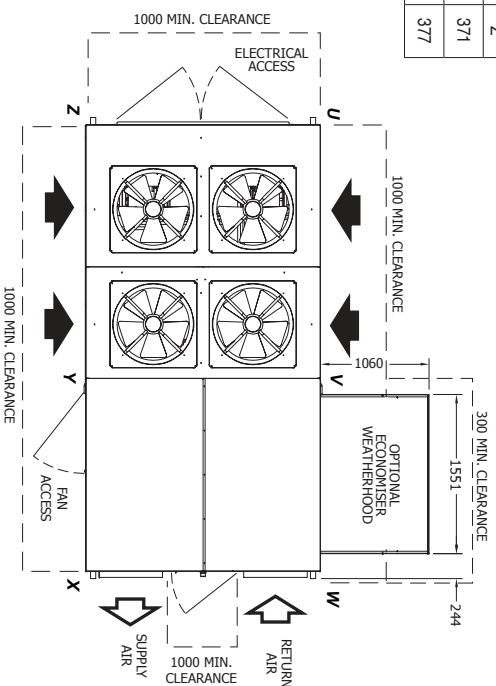
² Voltage range: 380–440V

³ Filter sizes are nominal; refer to Temperature for actual measurements.

DIMENSIONS (mm)

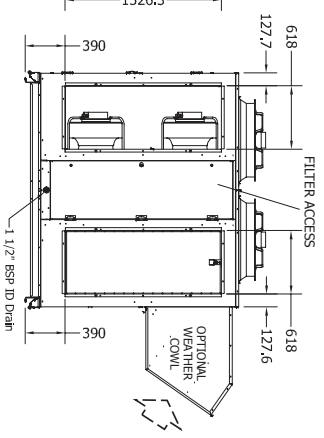
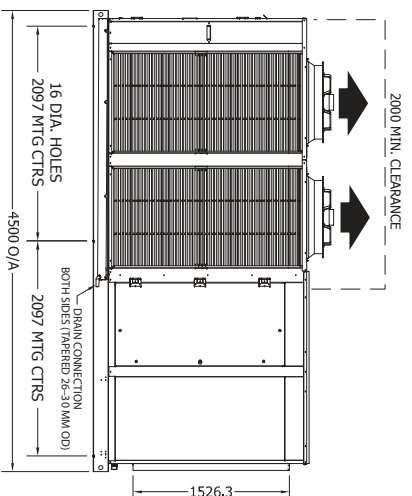
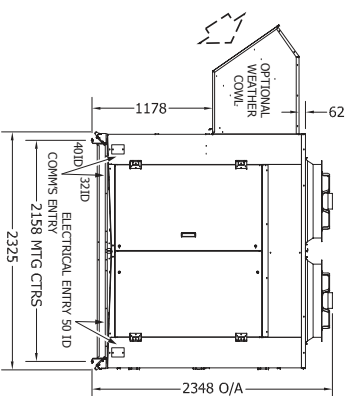
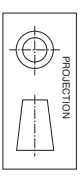
OPA 1410RLTM4FPQD01(-Z) Horizontal Supply / Standard Hand

	POINT LOADS (kg)					
	U	V	W	X	Y	Z
Sid	411	339	267	327	349	371
c/w Ec.	423	360	297	339	358	377



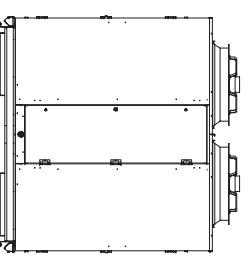
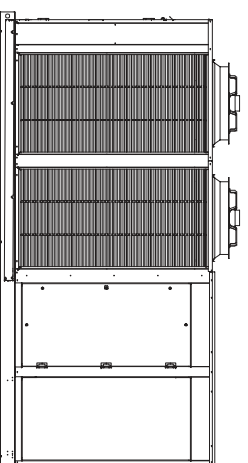
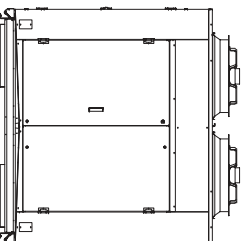
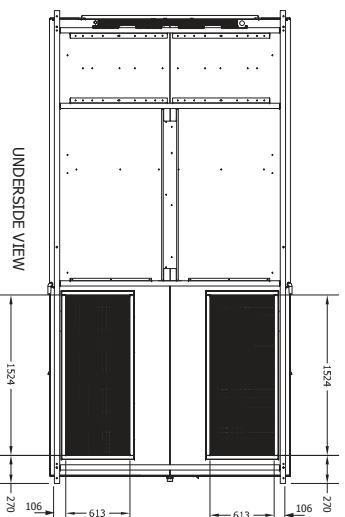
Multiple units side-by-side:
Allow a minimum of 2m
between coil faces.

Not to Scale



OPA 1410RLTM4FPQD23(-Z) Downward Supply / Standard Hand

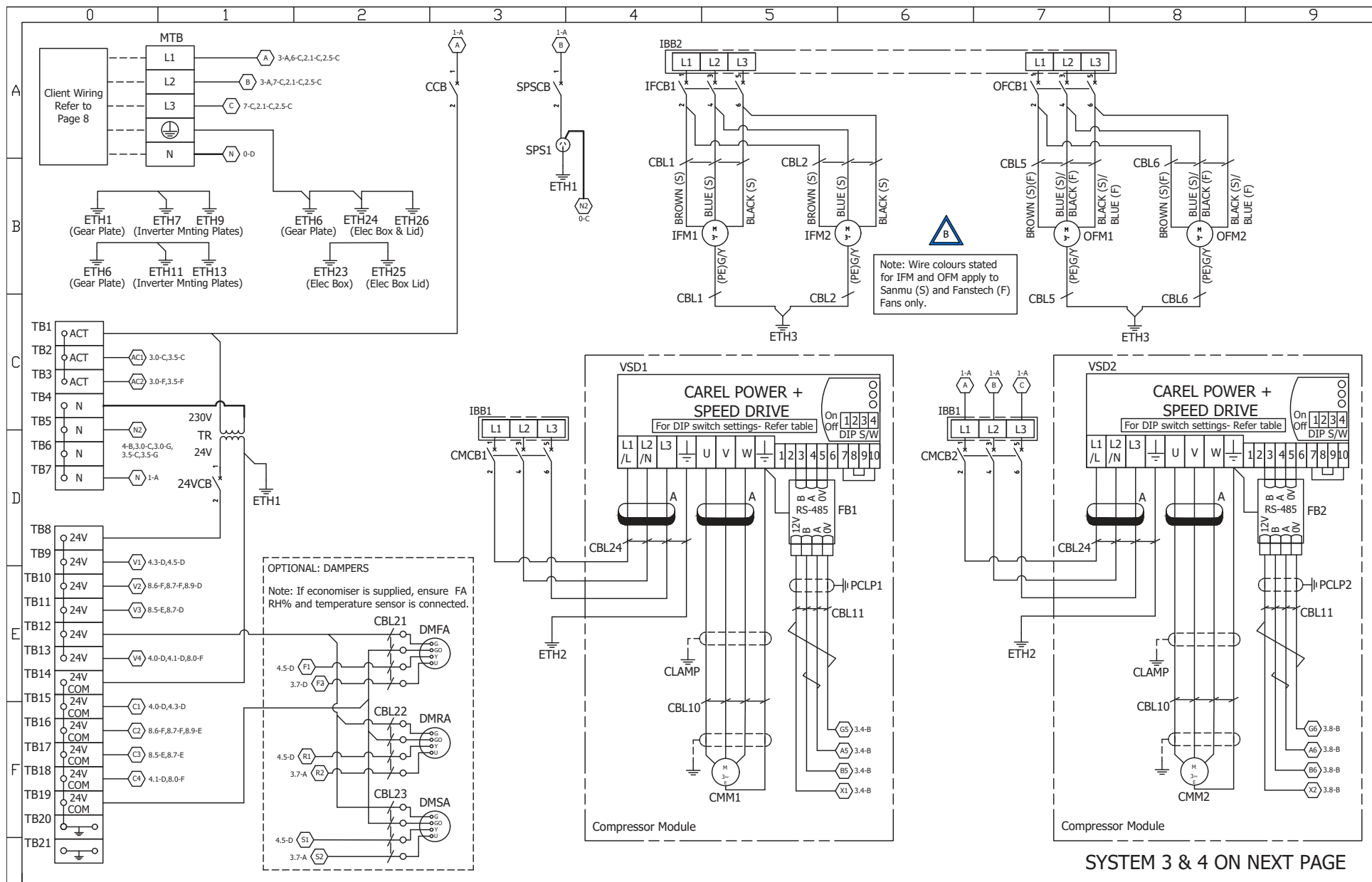
Clearances as above



OPPOSITE
HAND

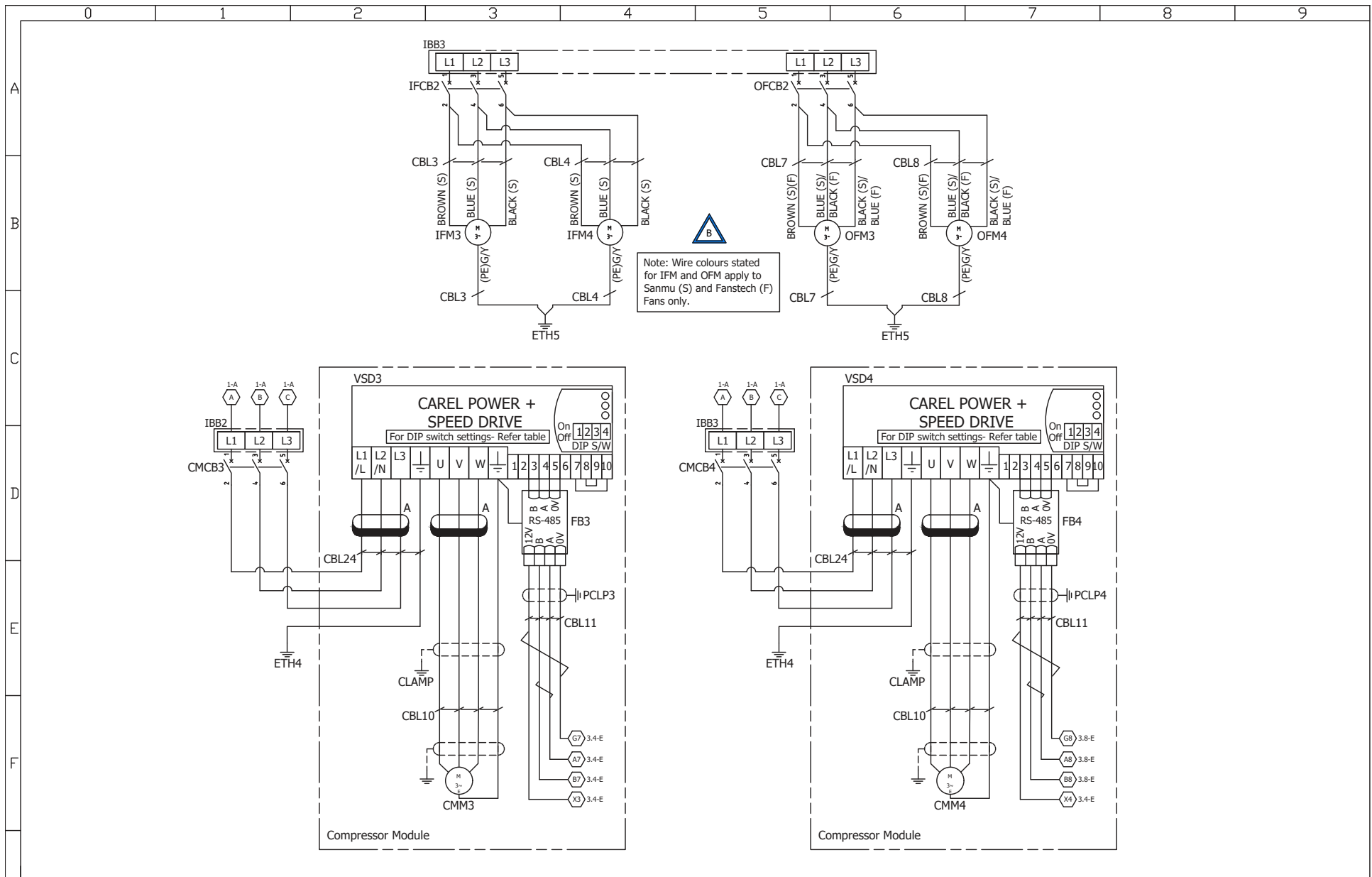


NOTE
Specifications are subject to change without
notice due to the manufacturer's ongoing
research and development programme.

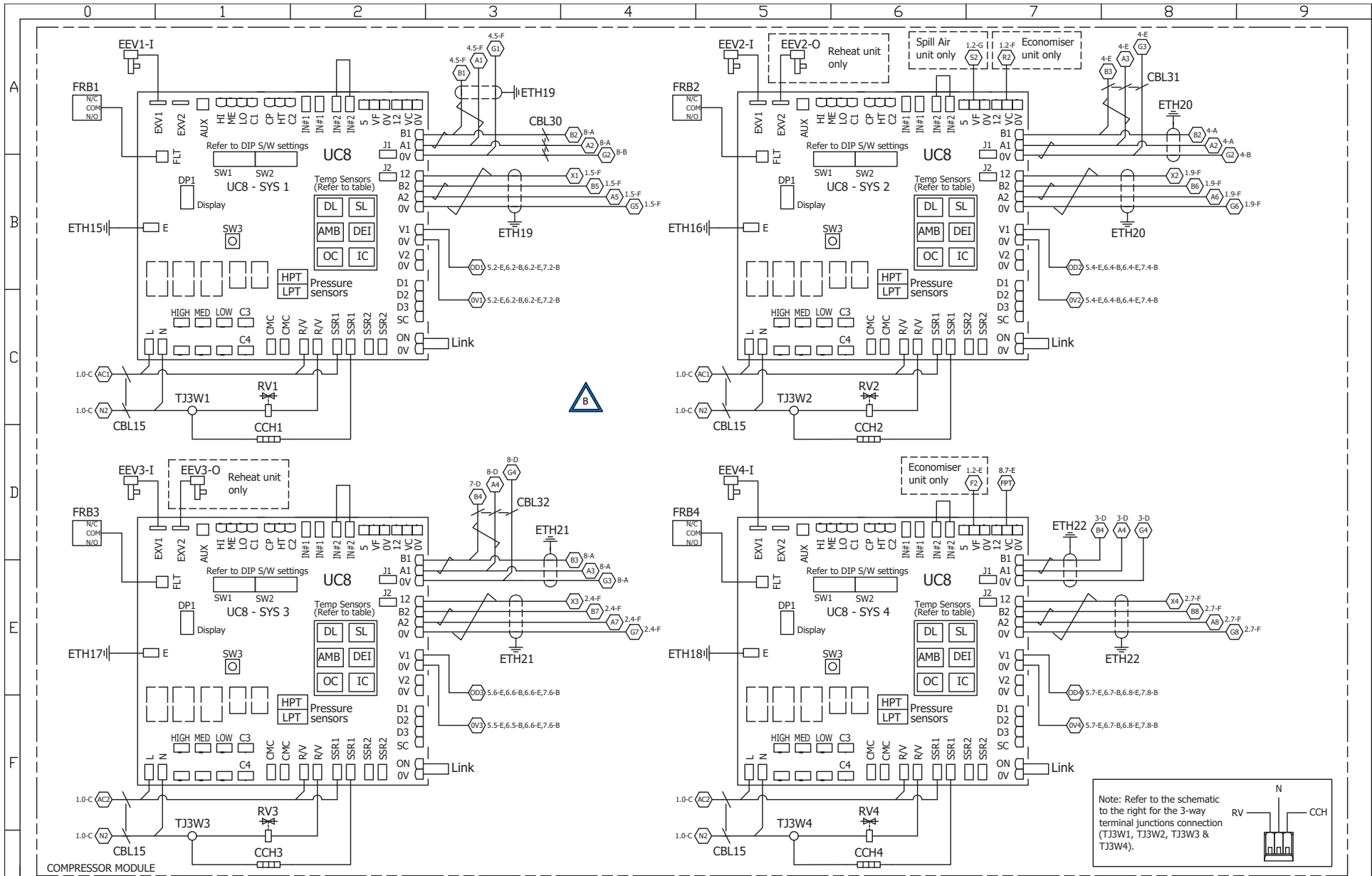


REV	MODIFICATION	DATE	ECN	APVD	Technical information
B	Redrawn to fit expansion module and Fanstech OD fans. Swap SA and FA sensors inputs at Carel controller. Change of Fanstech ID fans.	23-03-23	5090/5092/5093	LC	*Refer Page 8

	Client Wiring	Drawn: L.C	Date: 22-05-20	Title: OPA1410 / 1710 / 2110RLTM4FDPQ-S1 R32 UC8 Wiring Schematic	Drawing No: 291-003-281	Rev: B
		Apprvd: <i>A.V</i>			SHEET 1 OF 8	

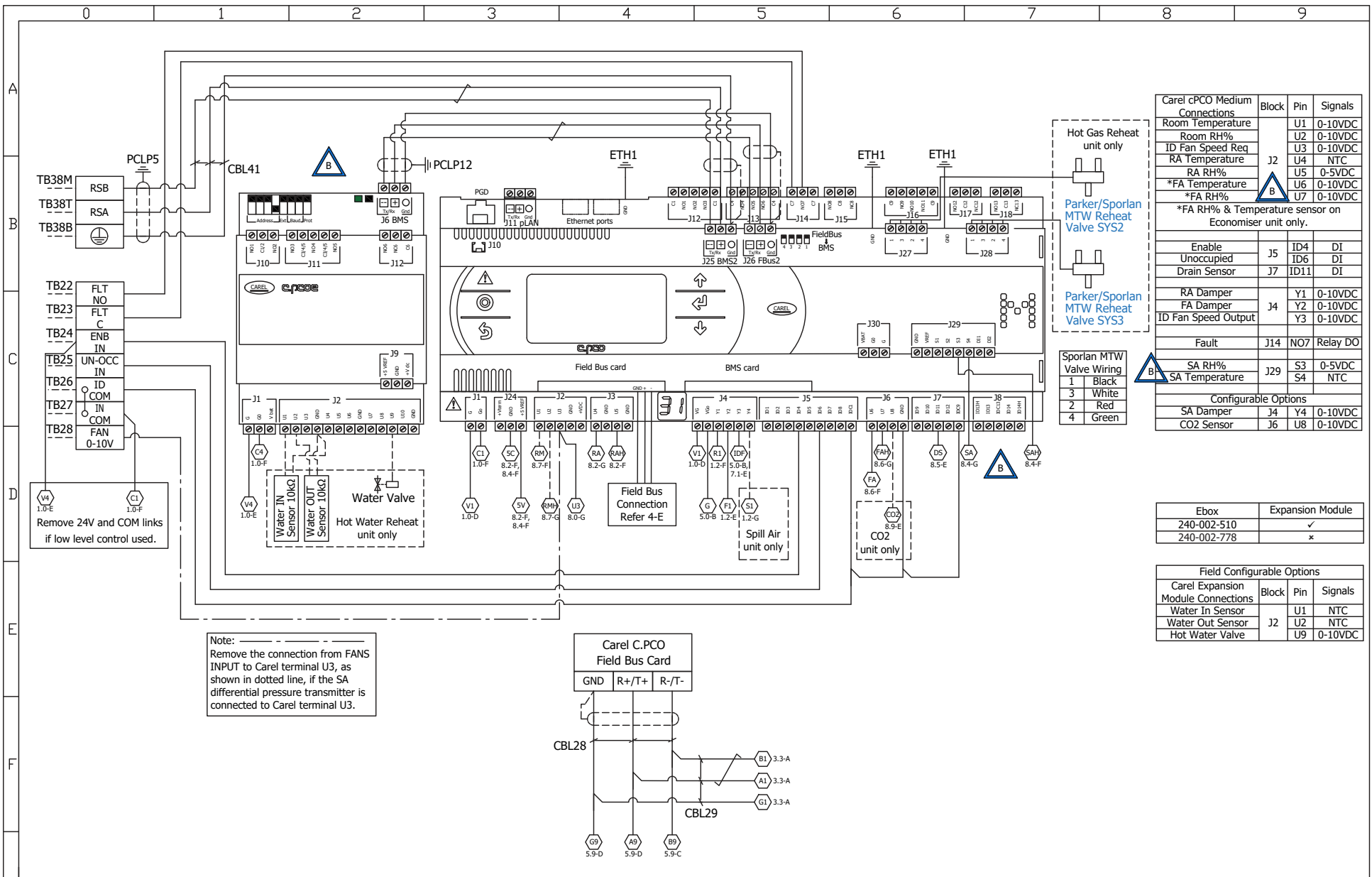


REV	MODIFICATION	DATE	ECN	APVD	Technical information
B	Redrawn to fit expansion module and Fanstech OD fans. Swap SA and FA sensors inputs at Carel controller. Change of Fanstech ID fans.	23-03-23	5090/5092/5093	LC	*Refer Page 8
©temperzone Ltd 2022		Client Wiring _____	Drawn: L.C	Date: 22-05-20	Title: OPA1410 / 1710 / 2110RLTM4FDPQ-S1 R32 UC8 Wiring Schematic
		Drawing No: 291-003-281 SHEET 2 OF 8		Rev: B	

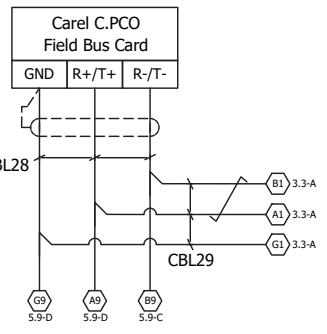


REV	MODIFICATION	DATE	ECN	APVD	Technical information
B	Redrawn to fit expansion module and Fanstech OD fans. Swap SA and FA sensors inputs at Carel controller. Change of Fanstech ID fans.	23-03-23	5090/5092/5093	LC	*Refer Page 8

	Client Wiring	Drawn: L.C	Date: 22-05-20	Title: OPA1410 / 1710 / 2110RLTM4FDPQ-S1 R32 UC8 Wiring Schematic	Drawing No: 291-003-281 SHEET 3 OF 8	Rev: B
		Apprvd: A.V				



Note:
Remove the connection from FANS INPUT to Carel terminal U3, as shown in dotted line, if the SA differential pressure transmitter is connected to Carel terminal U3.



Carel cPCO Medium Connections	Block	Pin	Signals
Room Temperature	J2	U1	0-10VDC
Room RH%		U2	0-10VDC
ID Fan Speed Req		U3	0-10VDC
RA Temperature		U4	NTC
RA RH%		U5	0-5VDC
*FA Temperature		U6	0-10VDC
*FA RH%		U7	0-10VDC
*FA RH% & Temperature sensor on Economiser unit only.			
Enable	J5	ID4	DI
Unoccupied		ID6	DI
Drain Sensor		ID11	DI
RA Damper	J4	Y1	0-10VDC
FA Damper		Y2	0-10VDC
ID Fan Speed Output		Y3	0-10VDC
Fault	J14	NO7	Relay DO
SA RH%	J29	S3	0-5VDC
SA Temperature		S4	NTC
Configurable Options			
SA Damper	J4	Y4	0-10VDC
CO2 Sensor	J6	U8	0-10VDC

Ebox	Expansion Module
240-002-510	✓
240-002-778	✗

Field Configurable Options			
Carel Expansion Module Connections	Block	Pin	Signals
Water In Sensor	J2	U1	NTC
Water Out Sensor	J2	U2	NTC
Hot Water Valve	J2	U9	0-10VDC

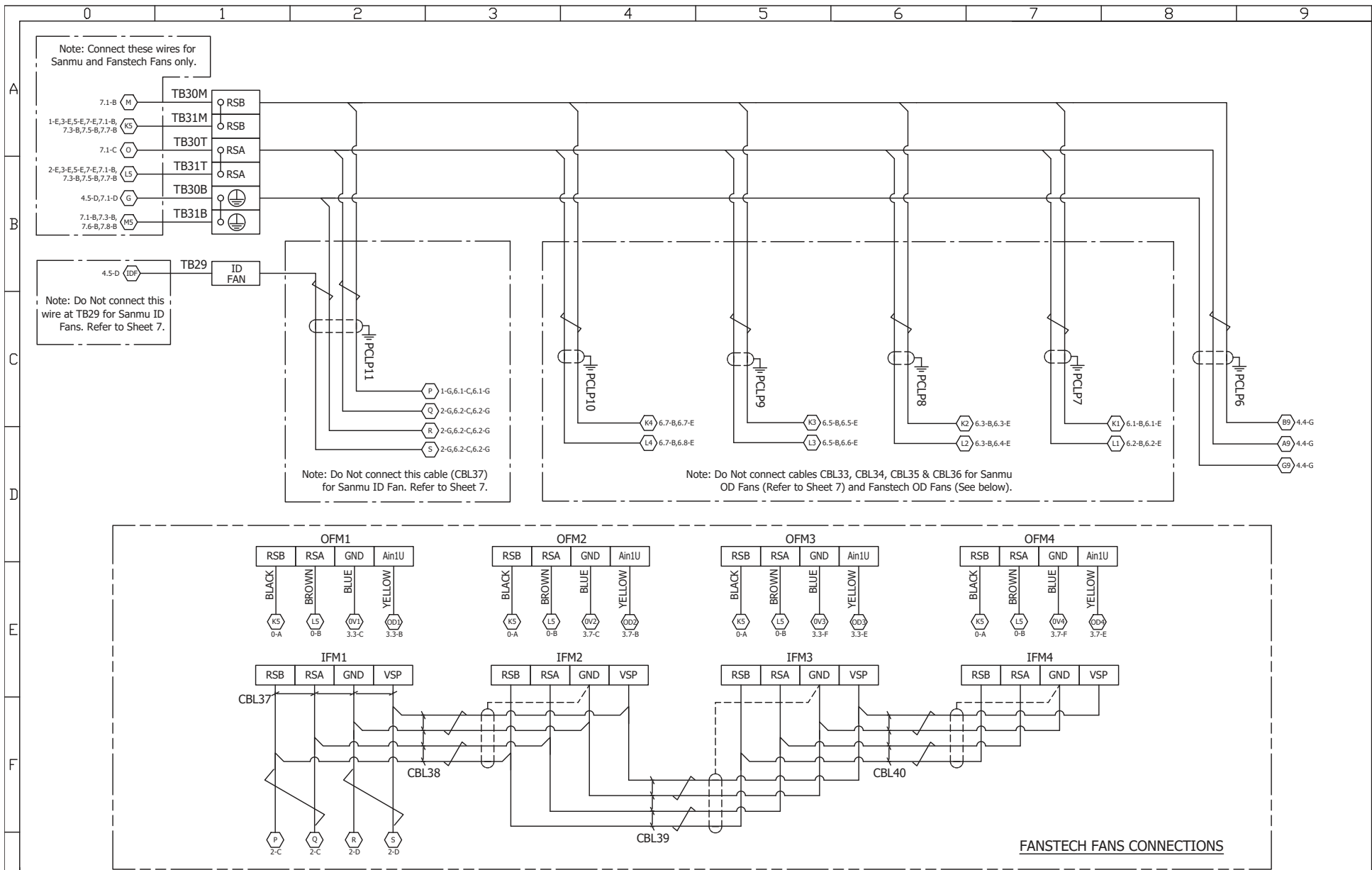
REV	MODIFICATION	DATE	ECN	APVD	Technical information
B	Redrawn to fit expansion module and Fanstech OD fans. Swap SA and FA sensors inputs at Carel controller. Change of Fanstech ID fans.	23-03-23	5090/5092/5093	LC	*Refer Page 8



Client Wiring _____
 Drawn: L.C Date: 22-05-20
 Apprvd: A.V

Title: OPA1410 / 1710 / 2110RLTM4FDPQ-S1 R32 UC8
 Wiring Schematic

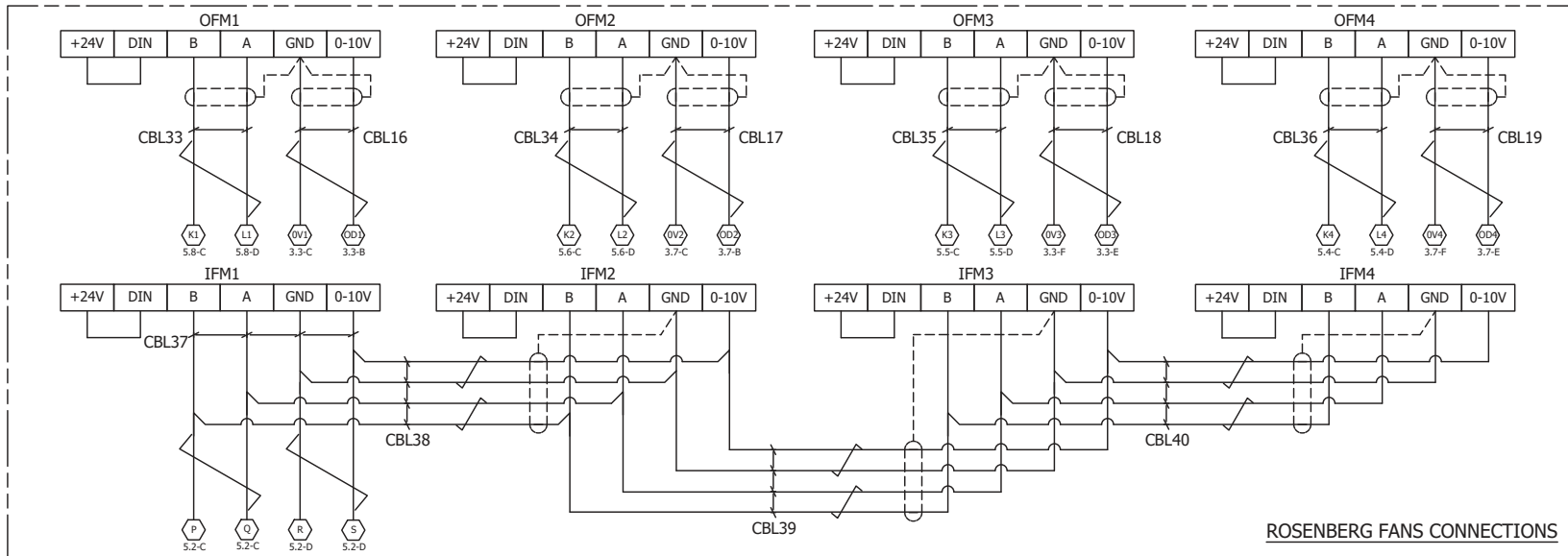
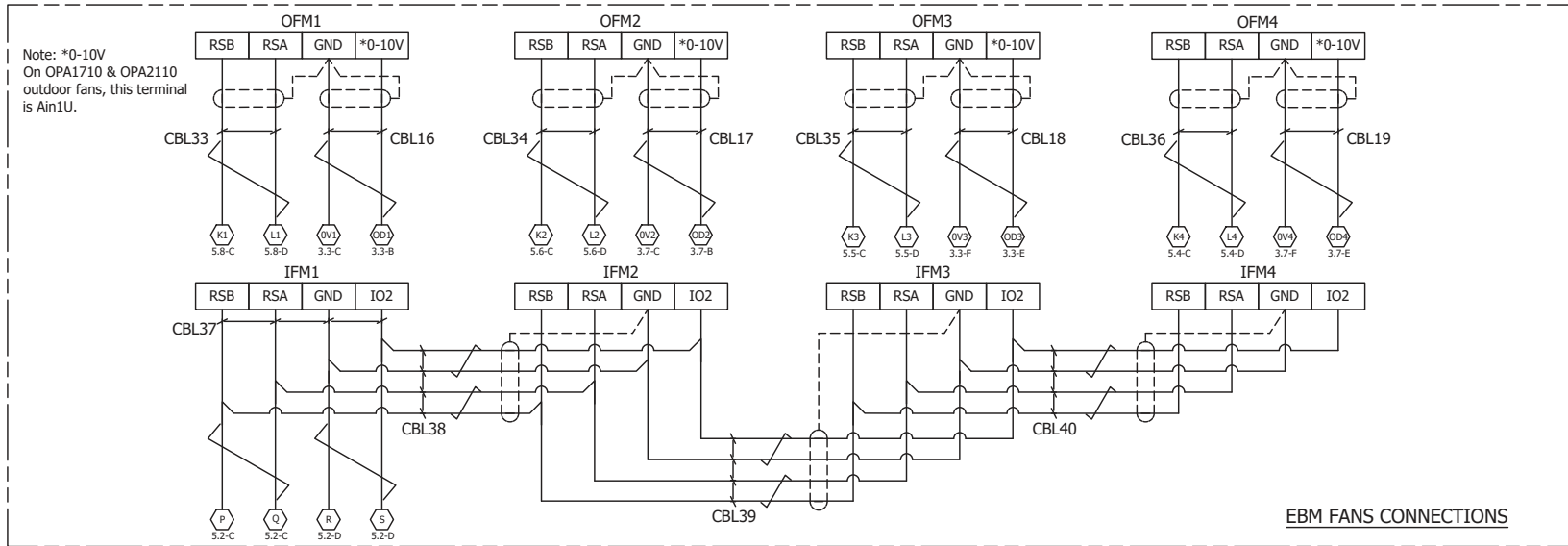
Drawing No: 291-003-281
 SHEET 4 OF 8
 Rev: B



REV	MODIFICATION	DATE	ECN	APVD
B	Redrawn to fit expansion module and Fanstech OD fans. Swap SA and FA sensors inputs at Carel controller. Change of Fanstech ID fans.	23-03-23	5090/5092/5093	LC

	Client Wiring	Drawn: L.C	Date: 22-05-20	Title: OPA1410 / 1710 / 2110RLTM4FDPQ-S1 R32 UC8 Wiring Schematic	Drawing No: 291-003-281 SHEET 5 OF 8	Rev: B
		Apprvd: A.V				

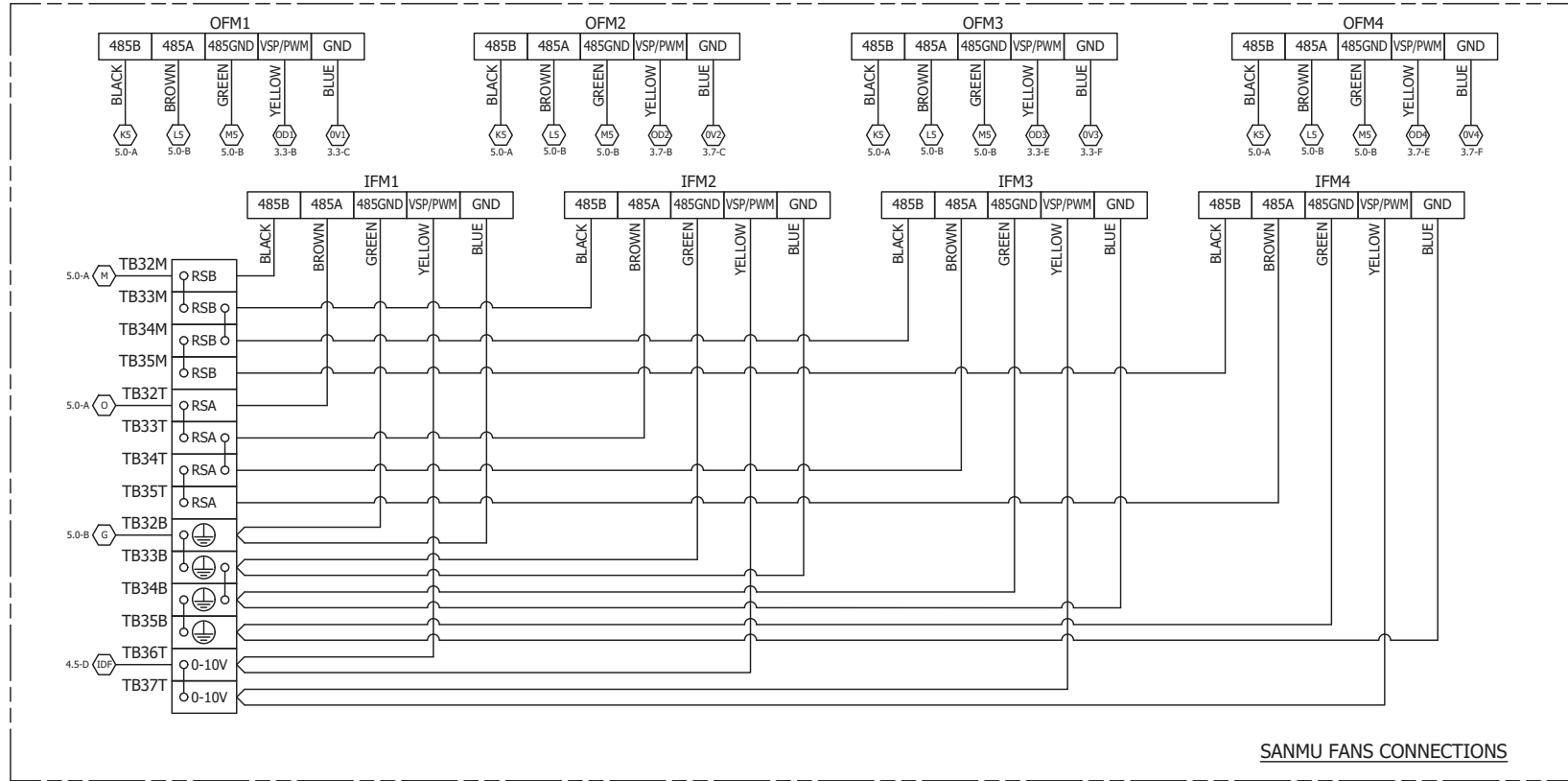
NOTE: THE FOLLOWING FANS CONNECTIONS APPLY, DEPENDING ON THE MAKE OF FANS INSTALLED IN THE UNIT.



REV	MODIFICATION	DATE	ECN	APVD
B	Redrawn to fit expansion module and Fanstech OD fans. Swap SA and FA sensors inputs at Carel controller. Change of Fanstech ID fans.	23-03-23	5090/5092/5093	LC

	Client Wiring	Drawn: L.C	Date: 22-05-20	Title: OPA1410 / 1710 / 2110RLTM4FDPQ-S1 R32 UC8 Wiring Schematic	Drawing No: 291-003-281 SHEET 6 OF 8	Rev: B
		Apprvd: A.V				

NOTE: THE FOLLOWING FANS CONNECTIONS APPLY, DEPENDING ON THE MAKE OF FANS INSTALLED IN THE UNIT.



REV	MODIFICATION	DATE	ECN	APVD
B	Redrawn to fit expansion module and Fanstech OD fans. Swap SA and FA sensors inputs at Carel controller. Change of Fanstech ID fans.	23-03-23	5090/5092/5093	LC



Client Wiring — — — — —

Drawn: L.C
Date: 22-05-20
Apprvd: A.V

Title: OPA1410 / 1710 / 2110RLTM4FDPQ-S1 R32 UC8
Wiring Schematic

Drawing No:
291-003-281
SHEET 7 OF 8
Rev: B

