

# Boho Chic Luxe Musical Mobile

Model Number:  
130670E001

Tiny Love



O-5M  
E306715067 OC

Tiny Love

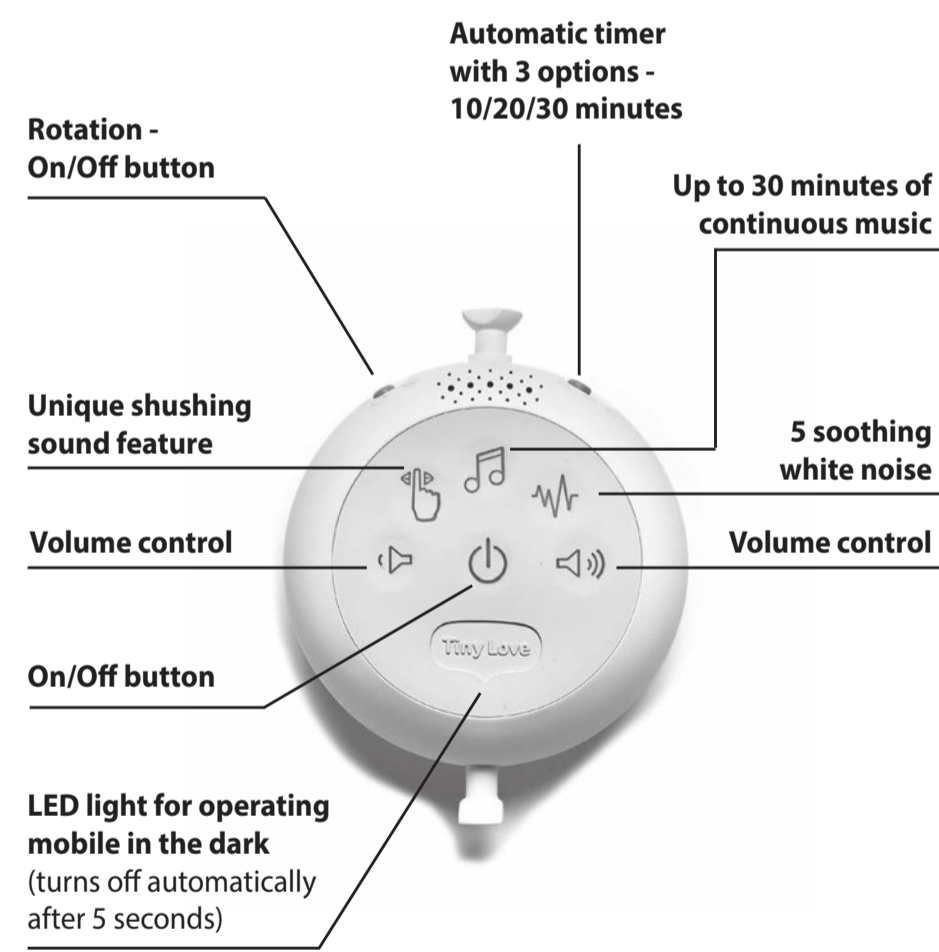
For more developmental information and playing tips please visit: [www.tinylove.com](http://www.tinylove.com)



Manufactured by:  
Tiny Love Ltd, Koredijk 5,  
NL-5704 RD, Helmond.

© All rights reserved, Tiny Love Ltd.

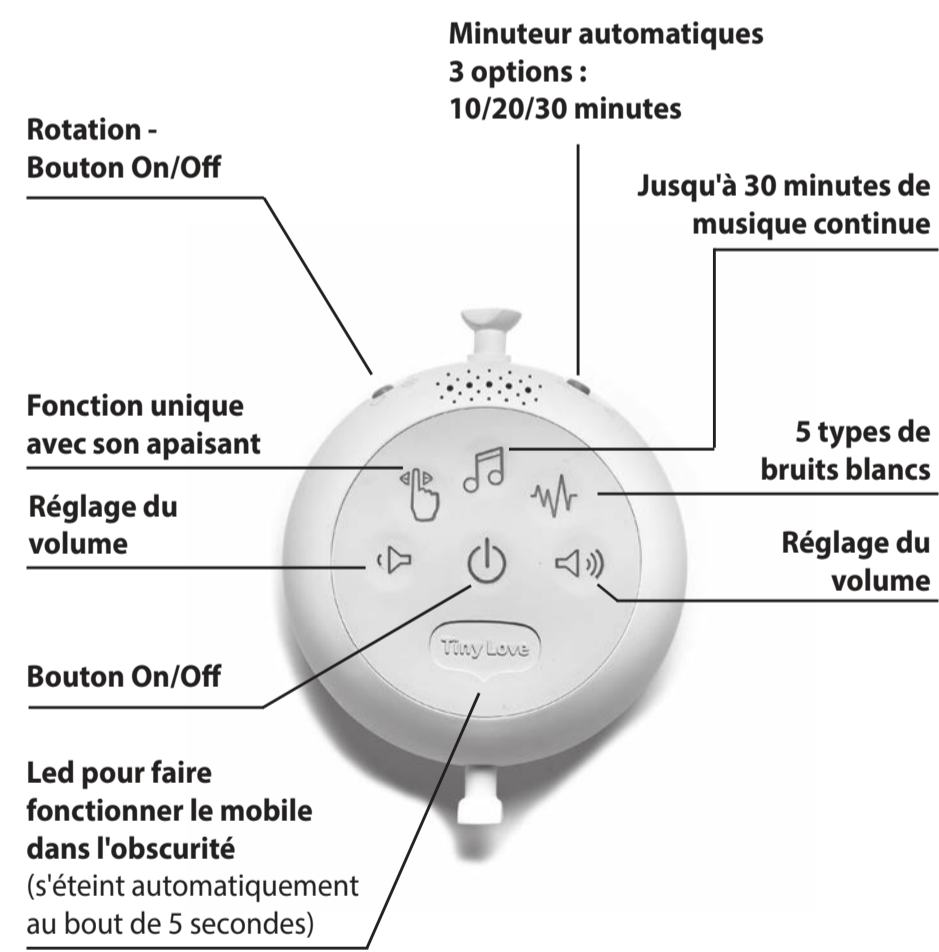
E306715067 OC



**Cleaning and storage**  
1. Wipe clean that the toy is turned off.  
2. Use damp cloth to wipe clean.  
3. DO NOT submerge any part of the product in water.  
4. Remove the batteries for long-term storage or periods of non-use.



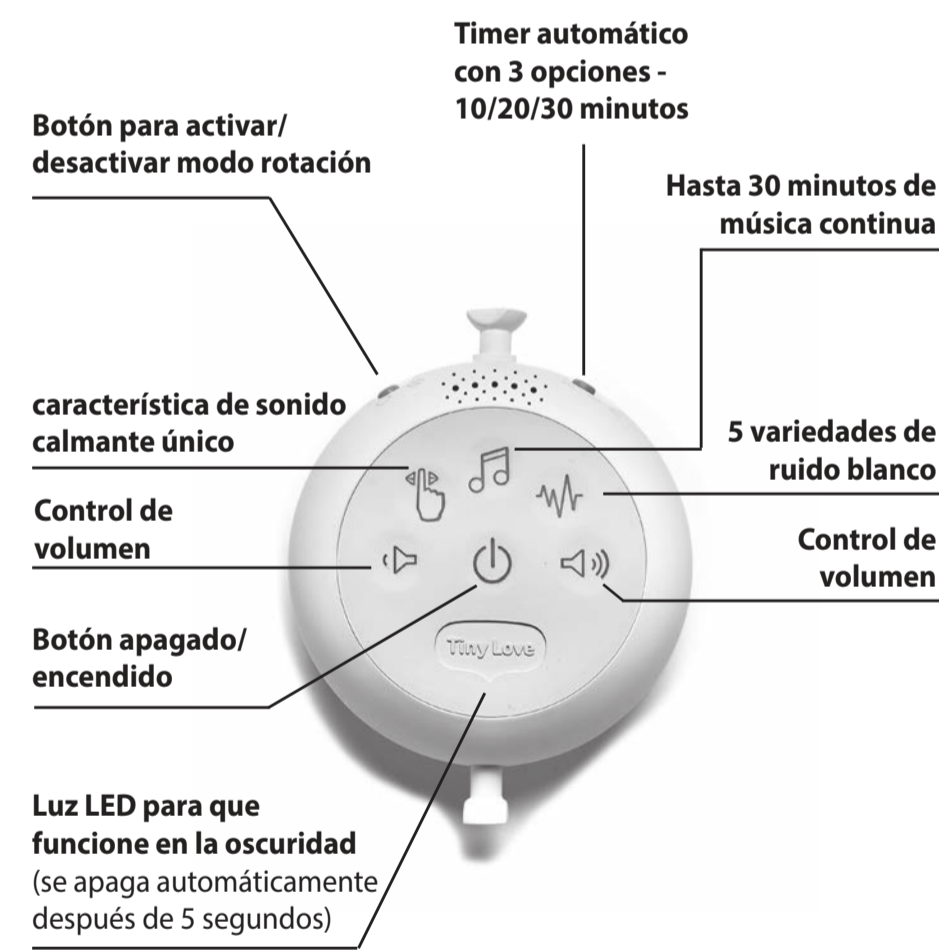
For customer service information please visit our website: [www.tinylove.com](http://www.tinylove.com)



**Entretien et Entreposage**  
1. Nettoyez ce jouet en mode éteint.  
2. Utilisez un chiffon humide pour le nettoyage.  
3. Aucune partie de ce produit NE DOIT être immergée dans l'eau.  
4. Enlevez les piles si vous n'utilisez pas ou entreposez le produit pour une longue période.



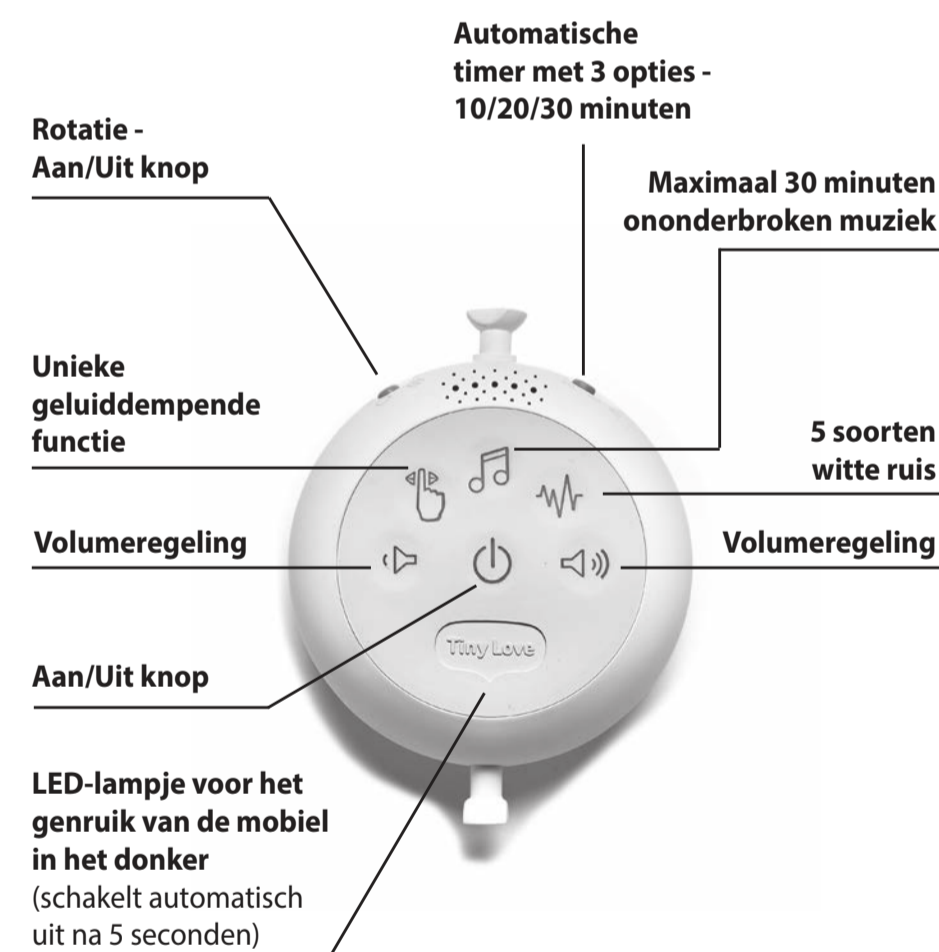
Pour tout l'information clientèle, rendez-vous sur notre site: [www.tinylove.com](http://www.tinylove.com)



**Limpieza y almacenamiento**  
1. Limpieza de este juguete debe hacerse con un paño húmedo.  
2. No sumerja ninguna parte del producto en agua.  
3. No ponga las pilas si no lo utiliza o lo guarda durante mucho tiempo.



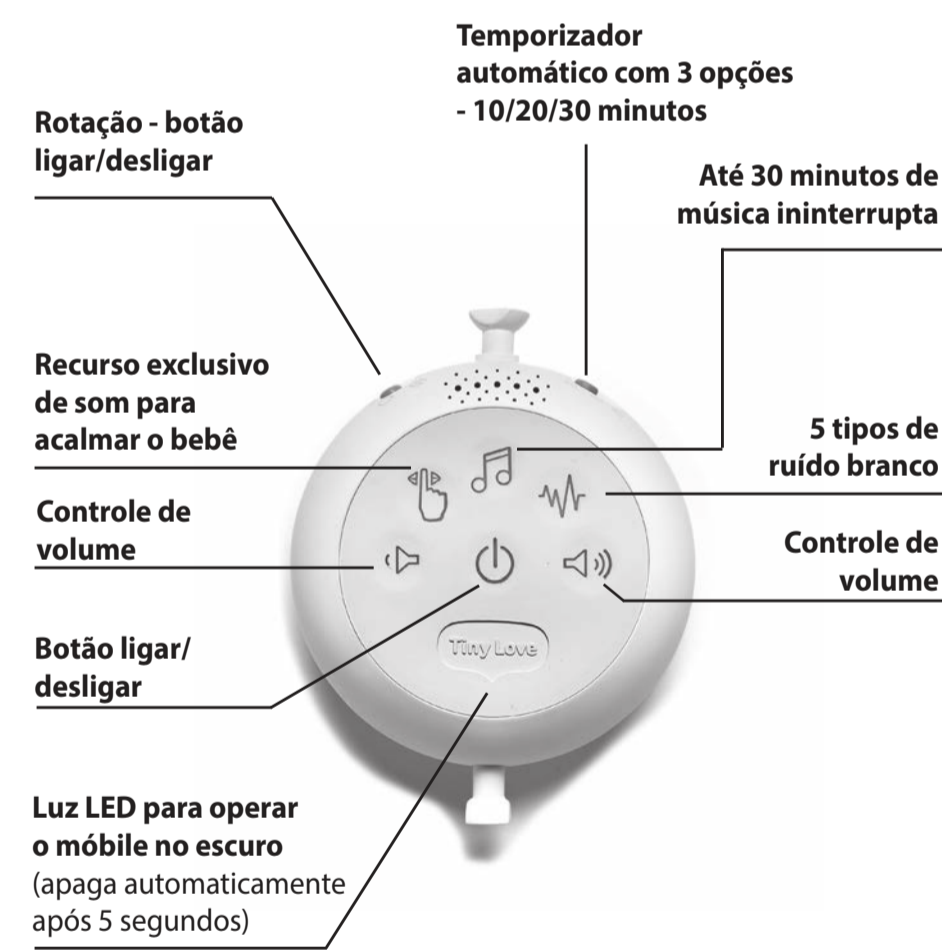
Para receber ajuda do serviço de informação ao cliente, por favor visite nosso website: [www.tinylove.com](http://www.tinylove.com)



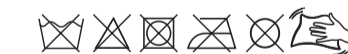
**Schoonmaken en Bewaren**  
1. Het apparaat moet uitgeschakeld zijn.  
2. Gebruik een vochtige doek om schoon te maken.  
3. Ondersteel het LED-lampje niet in water.  
4. Verwijder de batterijen in geval van langdurige opslag of gebruik.



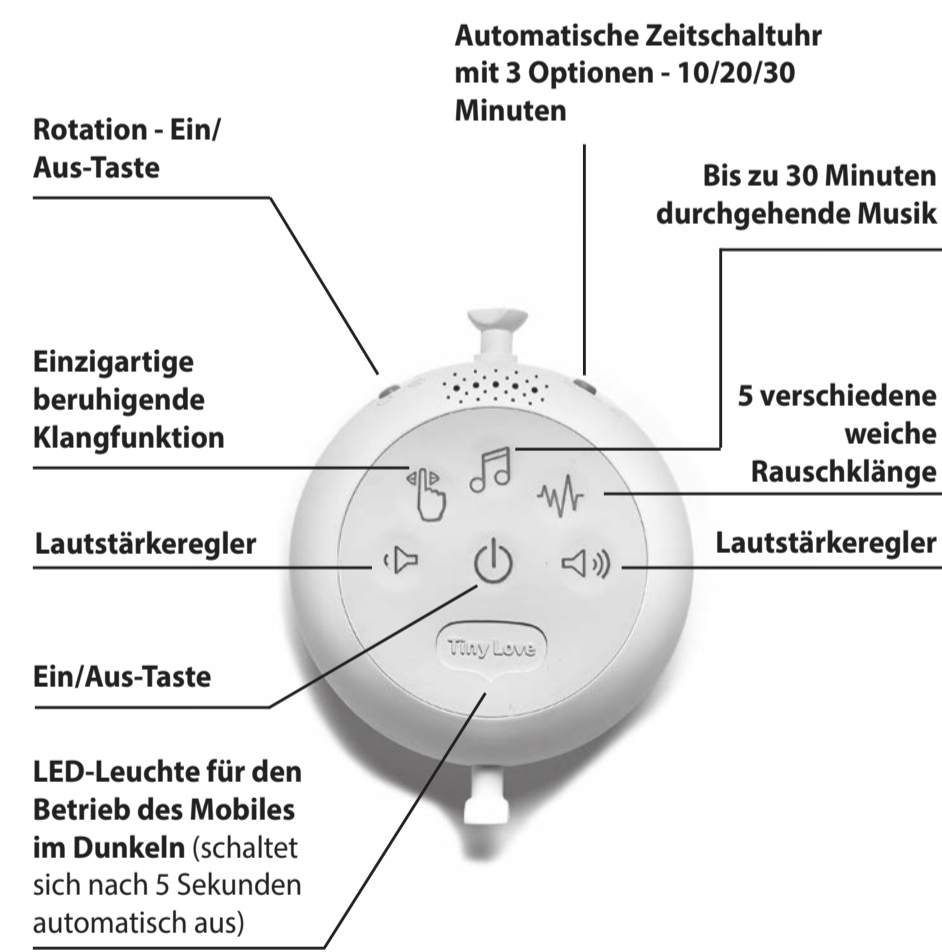
Voor klantenservice informatie kunt u terecht op onze website: [www.tinylove.com](http://www.tinylove.com)



**Limpieza e Armazenagem**  
1. Limpeza de este brinquedo deve ser feita com um pano úmido.  
3. Não coloque nenhuma parte do produto na água.  
4. Remova as pilhas quando for armazenar ou deixar de usar o produto por um longo período de tempo.



Para receber ajuda do serviço de informação ao cliente, por favor visite nosso website: [www.tinylove.com](http://www.tinylove.com)

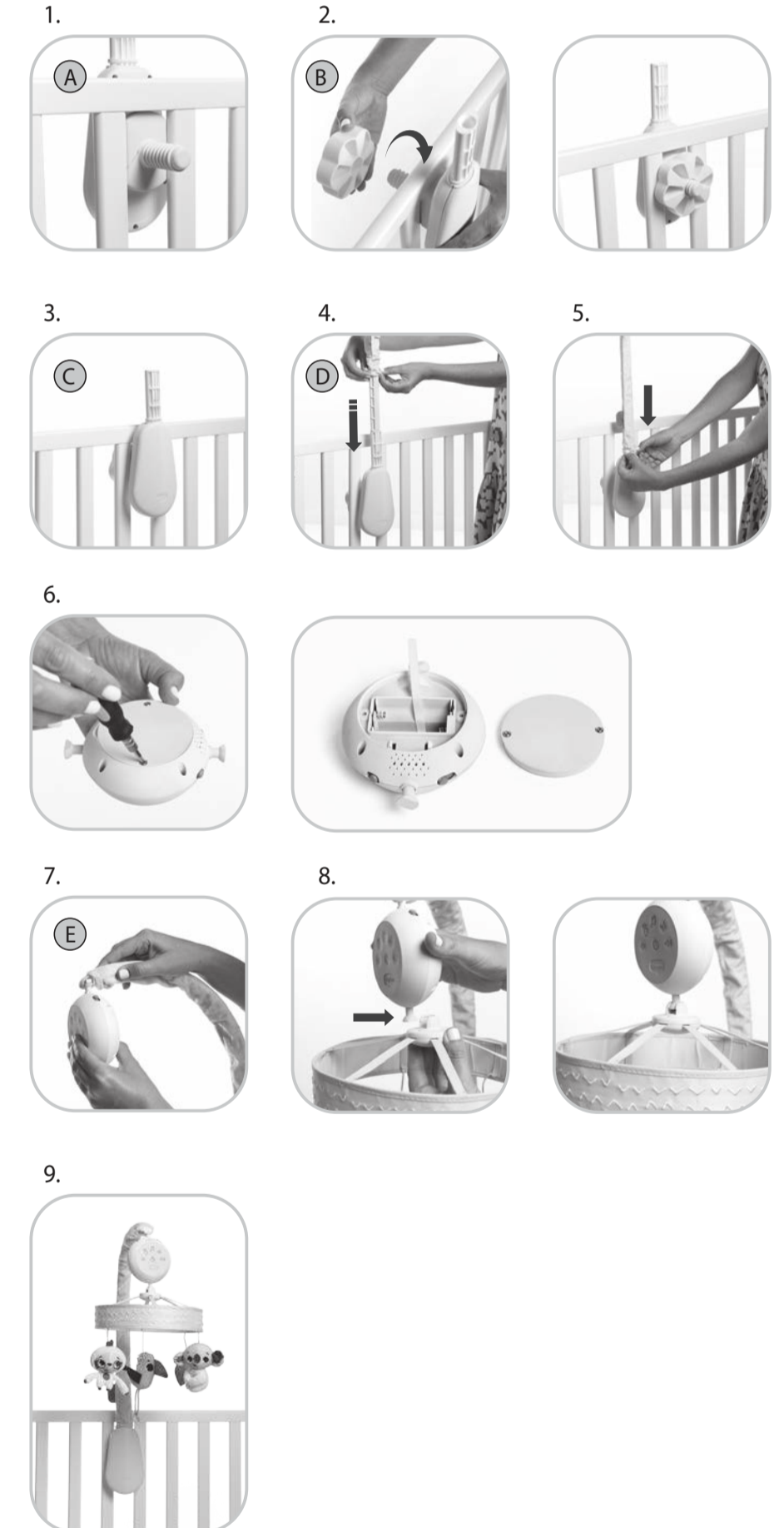
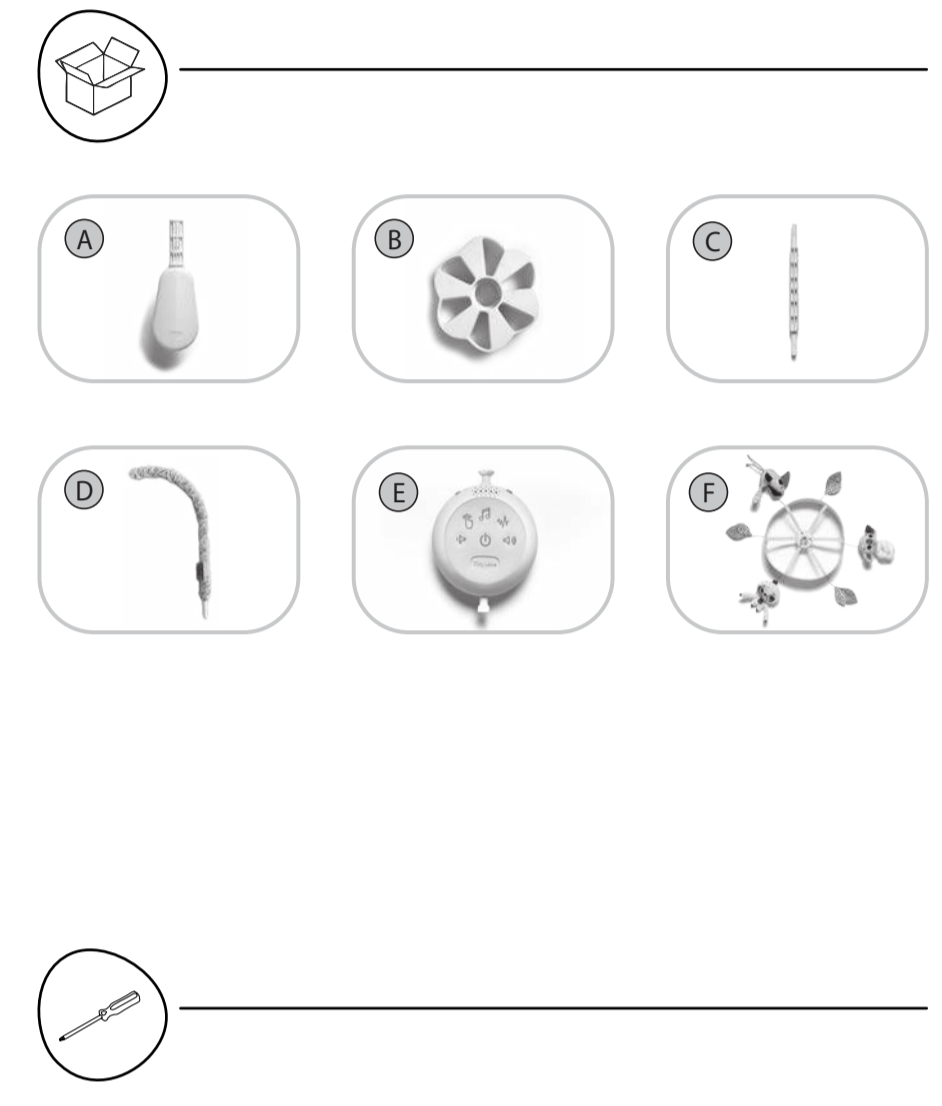


**Reinigung und Aufbewahrung**  
1. Stellen Sie sicher, dass das Mobile ausgeschaltet ist.  
2. Mit einem feuchten Tuch abwischen.  
3. Tauchen Sie KEIN Teil des Produkts in Wasser ein.  
4. Entfernen Sie die Batterien für eine längerfristige Lagerung oder Nichtbenutzung.



Für Informationen zu unserem Kundenservice besuchen Sie bitte unsere Website: [www.tinylove.com](http://www.tinylove.com)

[REVISIONS]				
(ECO #)	(REV.)	(DESCRIPTION)	(DATE)	(APPROVED)
NA	0A	New Release	14.8.20	Paz Baum
A2100119	0B	Updating sheet size Record	25.10.21	Paz Baum
A2200150	0C	Adding recycling Signs	23.11.22	Paz Baum



[PRODUCT]		(NAME)	(DATE)	(TOLERANCE)
Boho Chic Luxe Musical Mobile		(DESIGN) Dana Picketl	(UNLESS OTHERWISE SPECIFIED)	
(ISO) (STANDARDS)	(PART NAME) Instruction sheet 67	(DRAWN) NA	(0-3) (± 0.02)	(1-10) (± 0.05)
(REVISION) 0C	(PART NO.) E306715067 OC	(APP) SHLOMIT/ASAF	(15-30) (± 0.1)	(40-100) (± 0.2)
(SHEET: 1 OF 2)	(MARKETING PART NO.) NA	(SCALE) 1:1	(50-100) (± 0.3)	(ANGLES) (± 0.5) (°)
(PAPER SIZE) (W- 1050mm / H- 470mm)	(STATUS) NA	(MATERIAL) White Paper	(WEIGHT) 90 gr/m <sup>2</sup>	(COLOR) Pantone: 2717_U

