

{REVISIONS}				
{ECO#}	{REV.}	{DESCRIPTION}	{DATE}	{APPROVED}
NA	0A	New release	7.2.21	Paz Baum
A2000113	0B	Adding warning	21.3.21	Paz Baum
A2200080	0C	Adding Warning text	17.11.22	Paz Baum

**Tiny Love®**

# Boho Chic 2-in-1 Rocker

Model Number  
180700E002

0M +



E8070IS412 0C

<b>Tiny Love®</b>	{Product} Boho Chic 2-in-1 Rocker	{NAME} Manuella	{DATE}	{TOLERANCE }	
{ISO } {STANDARDS}	{PART NAME} Instruction sheet UK_FR	{Design}	Paz Baum	{UNLESS OTHERWISE SPECIFIED}	
{Revision:} 0C		{Drawn}	NA	{0-3}	{± 0.02}
{SHEET: 1 OF: 8 }	{PART NO.} E8070IS412 0C	{App.}	Shlomit Toledano	{3-15}	{± 0.05}
		{SCALE:}	{1:1}	{15-30}	{± 0.1}
{PAPER SIZE:} {W-210mm H-290mm}	{Marketing Part No.} NA	{MATERIAL}	white paper	{30-50}	{± 0.2}
	{Status:} NA	{FINISH}	NA	{50-100}	{± 0.3}
				{ANGLES}	{± 0.5} {°}
				{weight}	80 gr/m <sup>2</sup>
				{Color}	pantone: 2717_U

## Boho Chic 2-in-1 Rocker

### INSTRUCTION GUIDE

IMPORTANT! KEEP FOR FUTURE REFERENCE.

### WARNINGS

- The maximum weight of the child is 9kg.
- Never leave the child unattended.



- Do not use the reclined cradle once your child can sit unaided.
- This reclined cradle is not intended for prolonged periods of sleeping.
- This reclined cradle does not replace a cot or a bed. Should your child need to sleep, then it should be placed in a suitable cot or bed.
- It is dangerous to use this reclined cradle on an elevated surface, e.g. a table.
- Always use the restraint system.
- Never use the toy bar to carry the reclined cradle.
- Do not use the reclined cradle if any components are broken or missing.
- Do not use accessories or replacement parts other than those approved by the manufacturer. Using other accessories can be dangerous.
- Adult assembly required. Small parts. Chocking Hazard.
- Young children should not be allowed to play unsupervised in the vicinity of the product.
- Always verify that the crotch strap and harness are correctly adjusted and locked even if the child is set for a short time.
- Be sure to check that your childcare article does not contain any loose screws or any other part which might injure the child or catch or trap his or her clothing (ribbon, dummy, necklace etc...), and thus cause strangulation.
- Check that the locking mechanisms are correctly engaged and adjusted before using your childcare article.
- Ensure that your childcare article is on a solid surface and is positioned at a safe distance from any device capable of producing an open flame, sources of intense heat, electrical sockets, extension leads, cookers, stoves... etc, or any object within the child's reach.
- To avoid the risk of suffocation, keep all plastic bags and packaging out of reach of babies and young children.
- Stay near and watch baby during use. This product is not safe for sleep or unsupervised use. If baby falls asleep, remove baby as soon as possible and place baby on a firm, flat sleep surface such as a crib or bassinet.

### Care and storage:

1. Washing instructions.



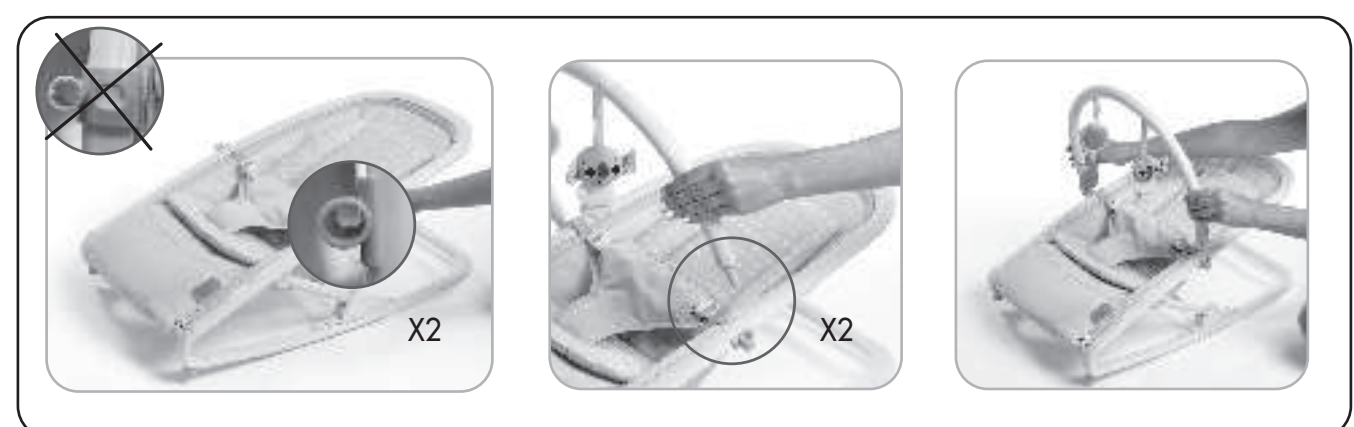
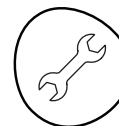
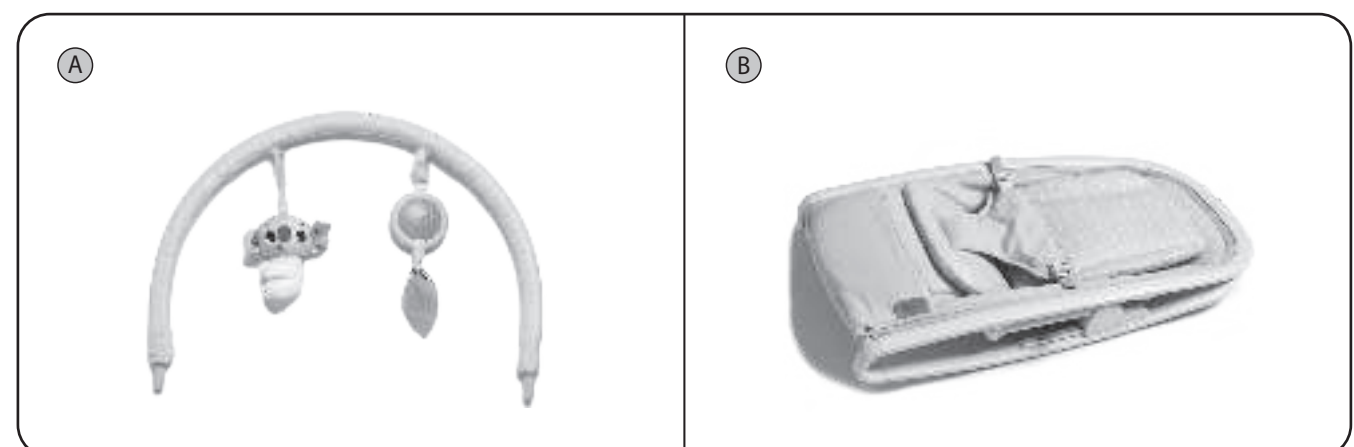
2. All fabrics are machine washable.
3. Do not submerge any of the product in water. Wipe with damp cloth.
4. After washing, make sure that mattress properly dry before reassembly.

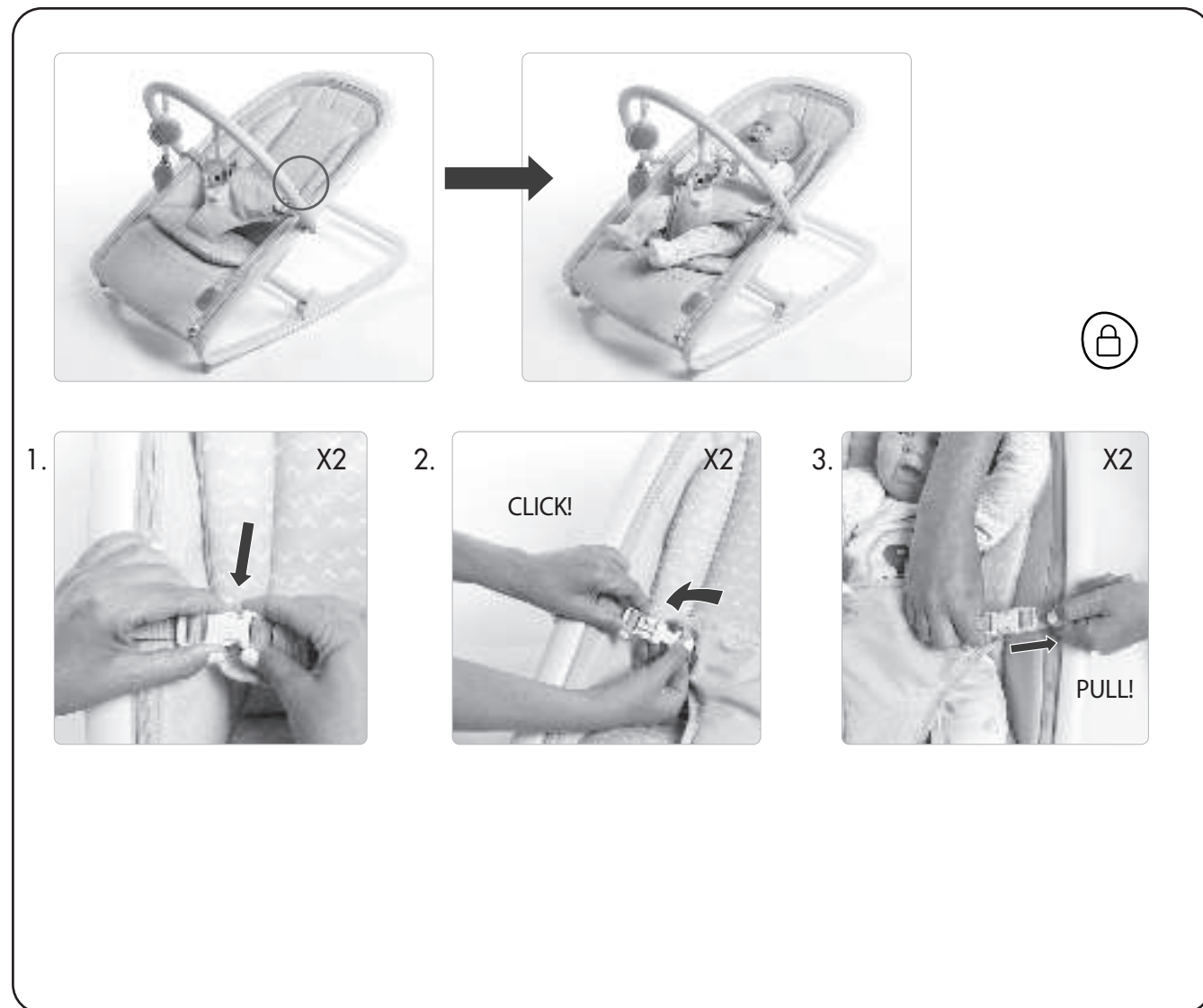
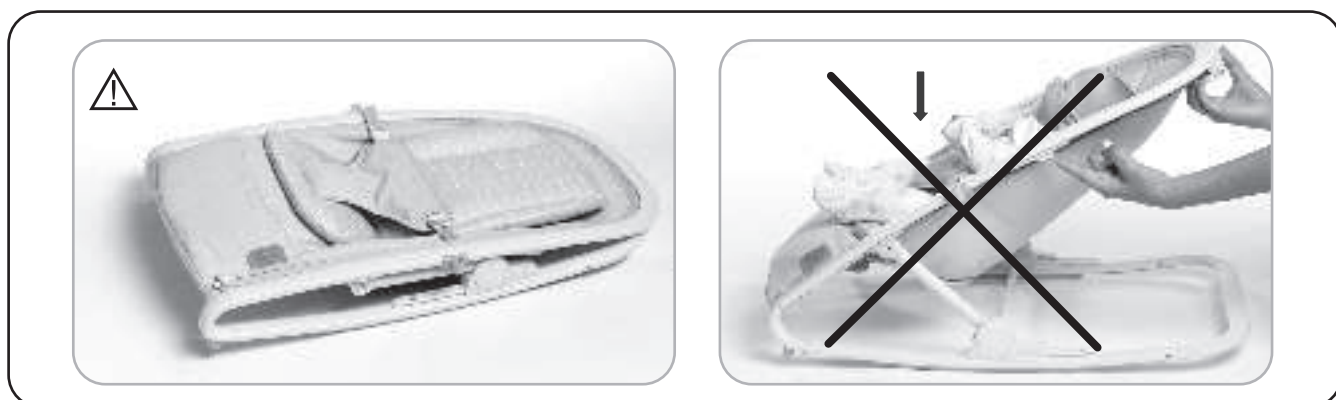
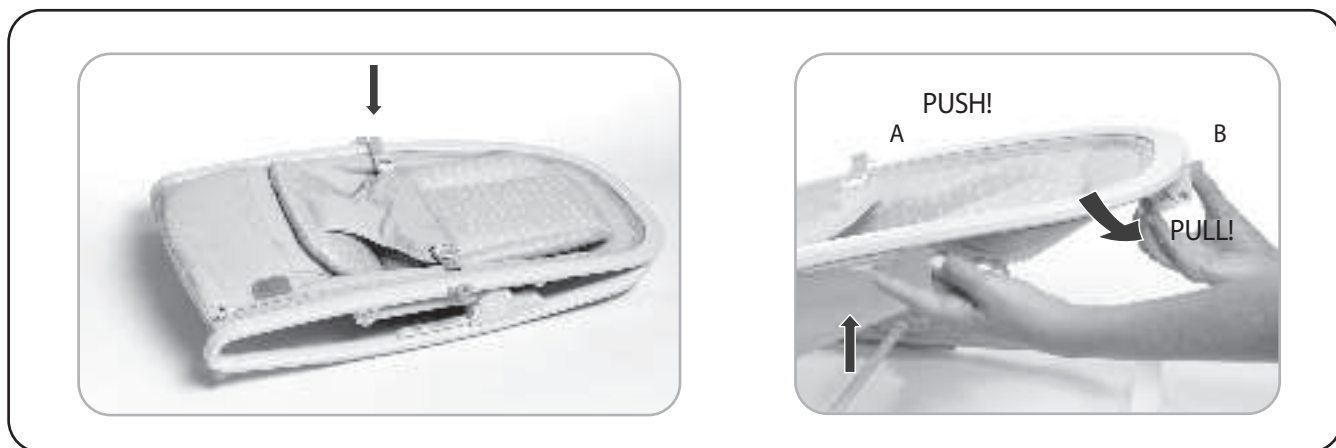
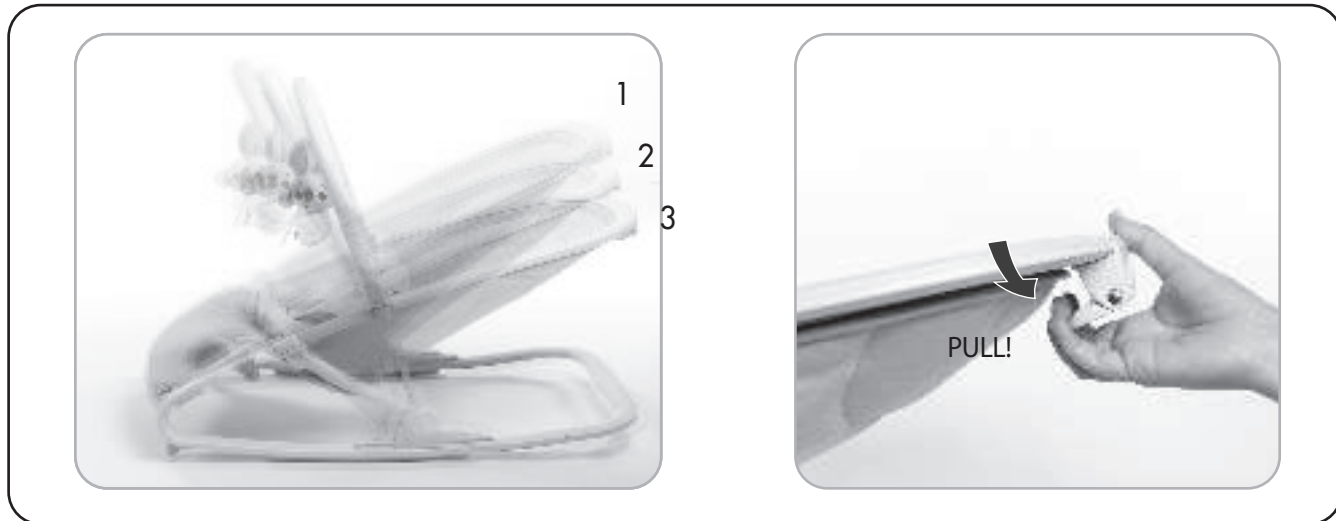
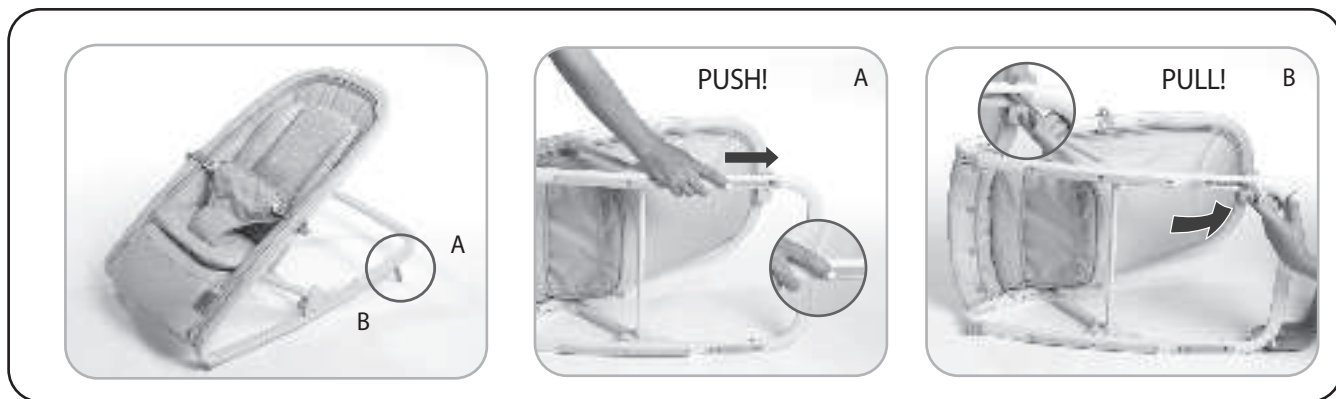
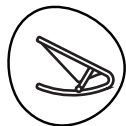
### Additional advice

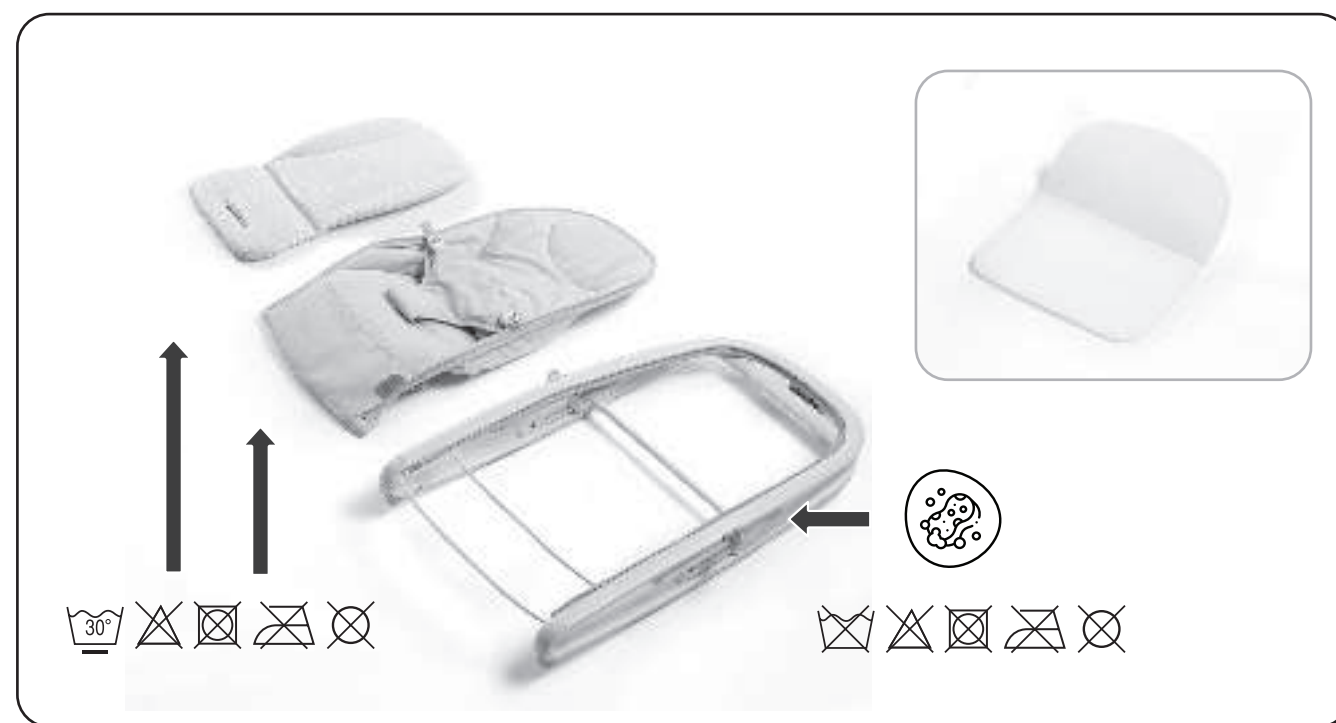
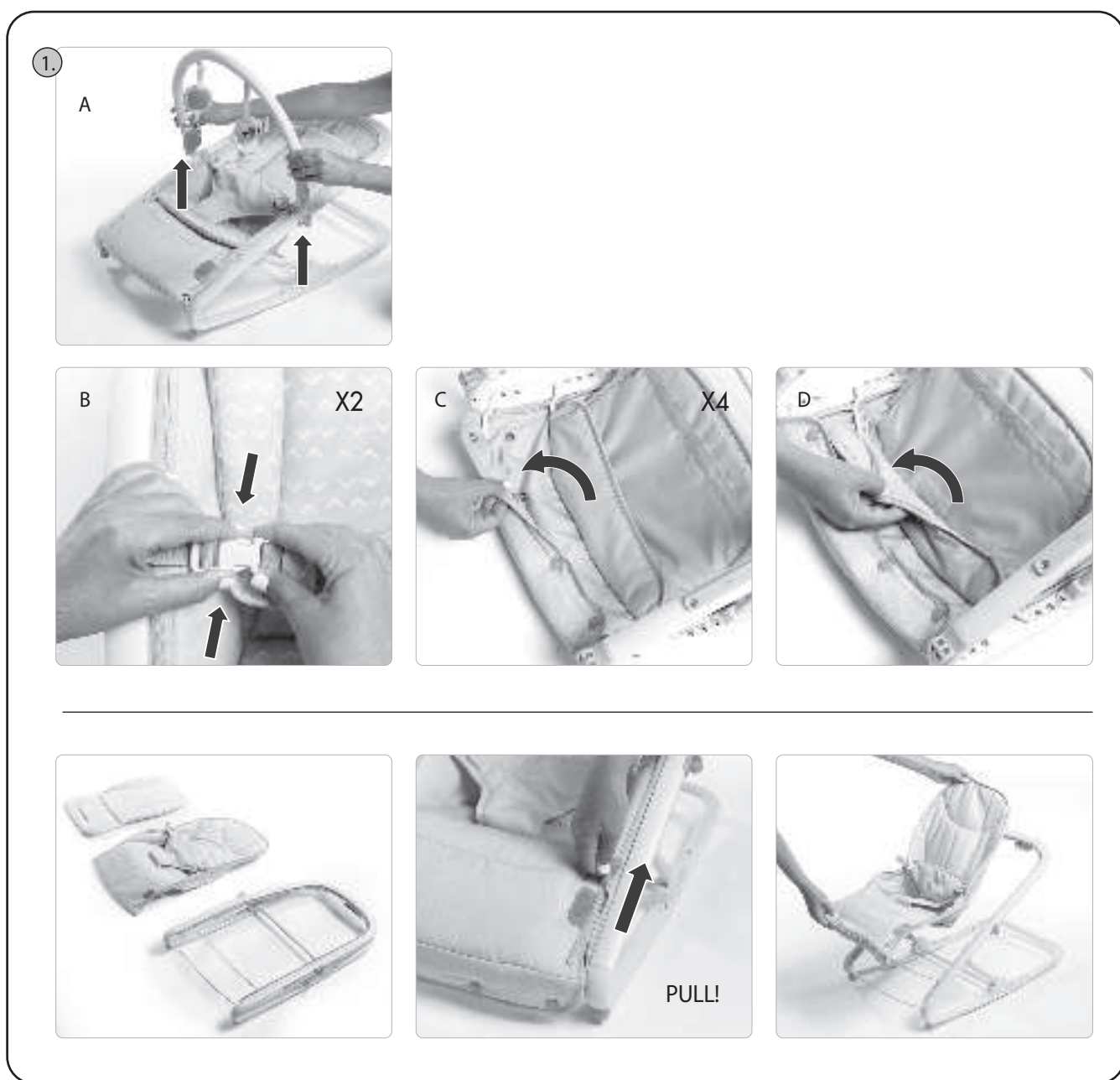
1. As soon as your child is capable of sitting up unaided, we recommend that you use a high chair for the safety and comfort of your child.
2. If possible, vary the angle of the backrest according to requirements : sitting for meals, semi-reclining when awake and fully reclining when resting.
3. Do not leave the child in the baby chair for very long periods: 1.5 hours max.
4. To prevent the risk of tipping, the baby chair should never be carried by two persons.
5. To prevent the risk of falling, the baby chair should not be carried with the child in it.
6. Clean the baby chair regularly.
7. For washing the garment, please consult the instruction label.
8. To facilitate reassembly, be sure to make a note of how the different parts fit together before dismantling the product. Do not iron. Remember that all mechanical products need regular maintenance and careful use if they are to provide maximum satisfaction and last a long time.

### Environment

For environmental reasons, when you have stopped using this product, we ask that you dispose of the product in the proper waste facilities in accordance with local legislation.







**Tiny Love®**



For more developmental  
information and playing tips  
please visit:  
[www.tinylove.com](http://www.tinylove.com)



Manufactured by:  
Tiny Love Ltd. Korendijk 5,  
NL-5704 RD, Helmond.

© All rights reserved, Tiny Love Ltd.

E8070IS412 0C