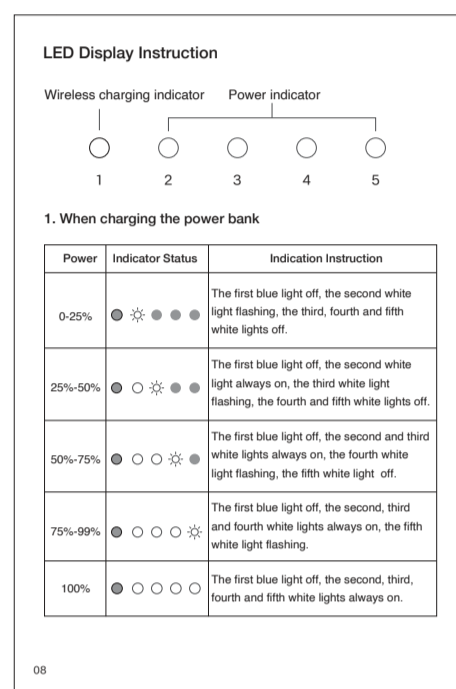
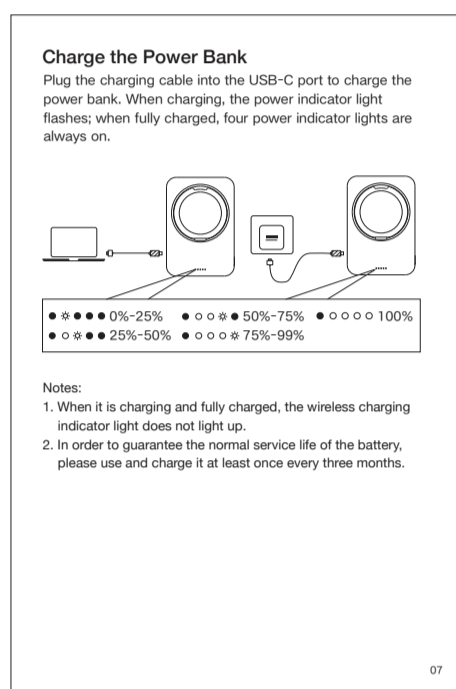
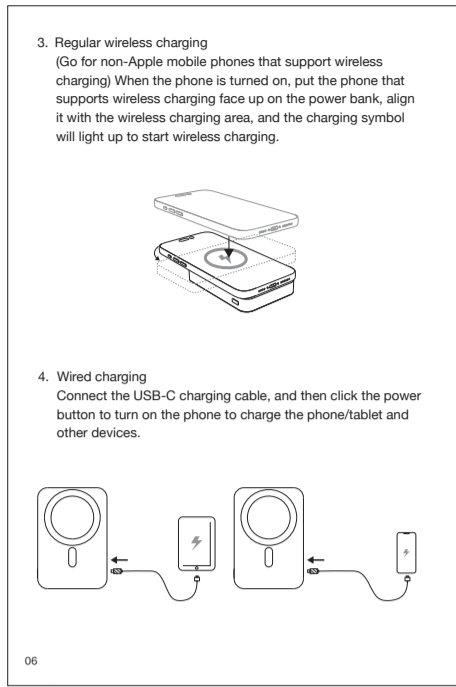
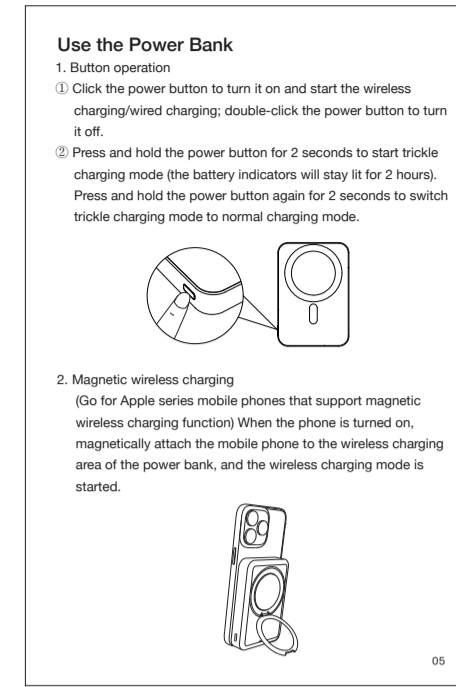
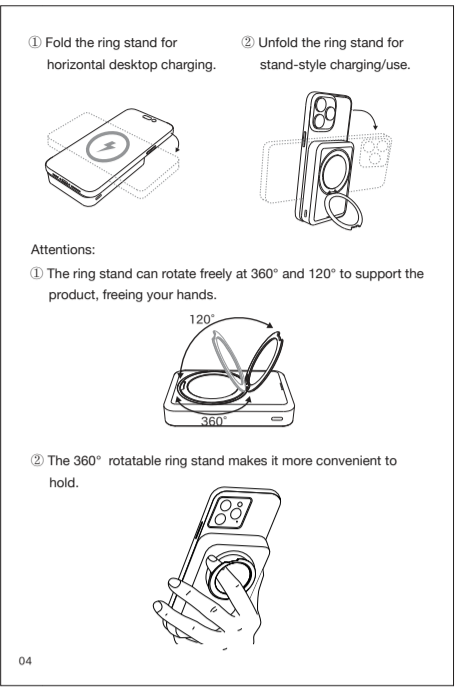
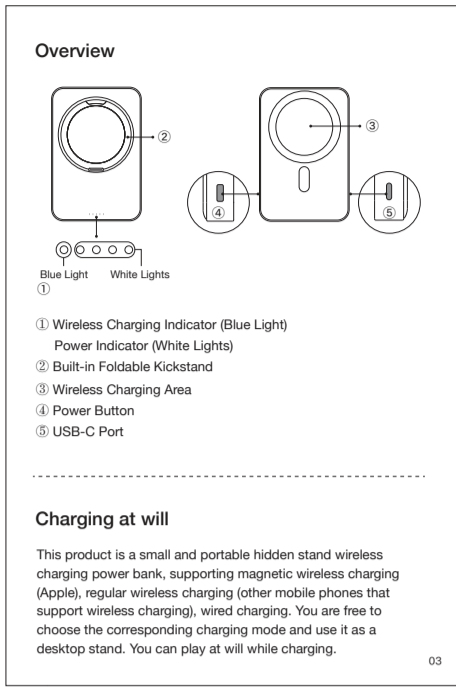


Contents / 目錄
Specifications 02
Overview 03
Use the Power Bank 05
Charge the Power Bank 07
LED Display Instruction 08
Attentions 11
Important Safety Instructions 11
Caution 13

Specifications
Product Name: Power Bank
Model: PB2C
USB-C Input: 5V 3A/9V 2.22A
USB-C Output: 5V 3A/9V 2.22A
Wireless Charging Output: 15W MAX
USB-C/Wireless Charging Output: 10W/5W 15W MAX
Output Power: 20W MAX
Lithium Battery Energy: 10000mAh 3.87V/38.7Wh
Cell Capacity: 10000mAh
Rated Capacity: 6000mAh (5V 2.2A)
Transfer Efficiency: >60%
Leadsing Voltage Of Battery Charging: 4.45V
Working Temperature: 0°C-35°C /32°F-95°F



2. When the power bank charges the devices (w/ wireless status)
Power: 100%-75%
Indicator Status: 5 lights on
Indication Instruction: The first blue light always on, the second, third, fourth and fifth white lights always on.

Wireless Charging Status, Wireless Charging Indicator Status, Display Instruction
Wireless charging the phone: Blue light stays on
After removing the phone from wireless charging: Blue light flashes slowly

06. High temperatures can reduce charging speed and limit power, which is a common issue with all wireless chargers. It is recommended to charge your device in environments with temperatures below 29°C (77°F).

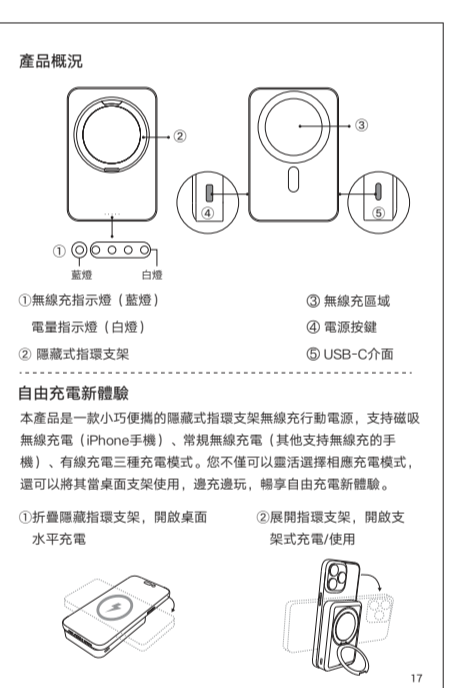
09. In normal conditions, the battery performance will decline over several years. Do not place the product in high temperatures or fire. Avoid exposing the product to environments with temperatures exceeding 40°C, as this may result in overheating, fire, or explosion.

Caution
This product is equipped with a built-in lithium battery, and please pay attention to the following:
01. Please charge the product in time when the battery is low. If the product is not used for long periods of time, charge and discharge it once every three months to prevent battery damage.

Changes or modifications not expressly approved by the party responsible for compliance could void the user's authority to operate the equipment.
This equipment has been tested and found to comply with the limits for a Class B digital device, pursuant to Part 15 of the FCC Rules.

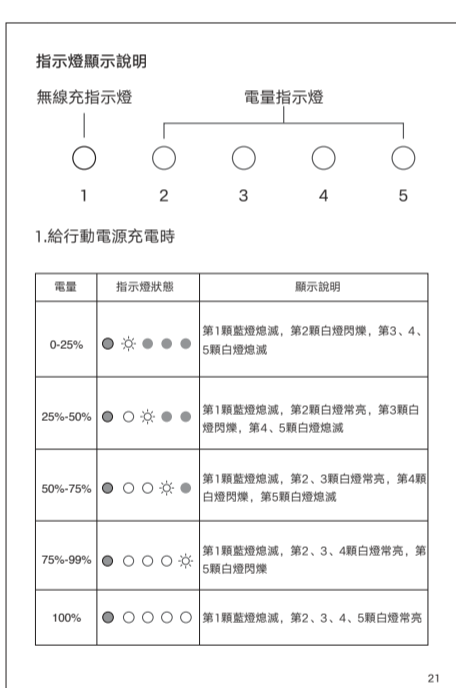
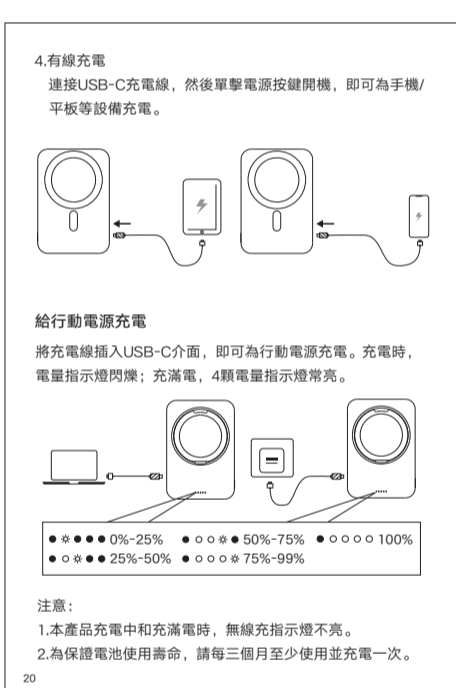
All products bearing the symbol are waste electrical and electronic equipment which should not be mixed with unsorted household waste. Instead, you should protect human health and the environment by handing over your waste equipment to a designated collection point for the recycling of waste electrical and electronic equipment.

產品規格
產品名稱: Ostand 10000 行動電源
產品型號: PB2C
USB-C輸入: 5V 3A/ 9V 2.22A
USB-C輸出: 9V 3A/ 9V 2.22A
無線充電輸出: 15W 最大
USB+無線充電輸出: 10W+5W 15W最大



注意:
1. 高功率充電可360°和120°自由旋轉調整位置，解放雙手。
2. 360°自由旋轉的隱藏式支架，隨手解放更方便。

2. 磁吸無線充電
適用於iPhone系列支援磁吸無線充電功能的「手機」開機狀態下，將手機磁吸在行動電源的磁吸區域，即可啟動無線充電。



2. 行動電源給設備充電時（無線狀態下）
Power: 100%-75%
Indicator Status: 5 lights on
Indication Instruction: The first blue light always on, the second, third, fourth and fifth white lights always on.

無線充電器, 無線充電指示燈, 顯示設備
無線充電器: 無線充電
無線充電指示燈: 無線充電
顯示設備: 無線充電

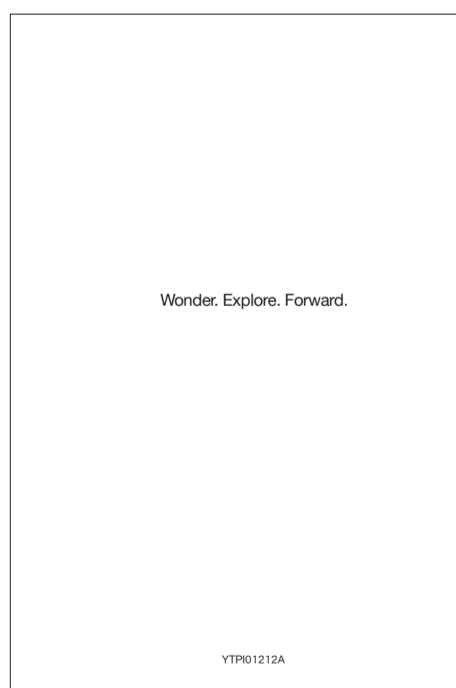
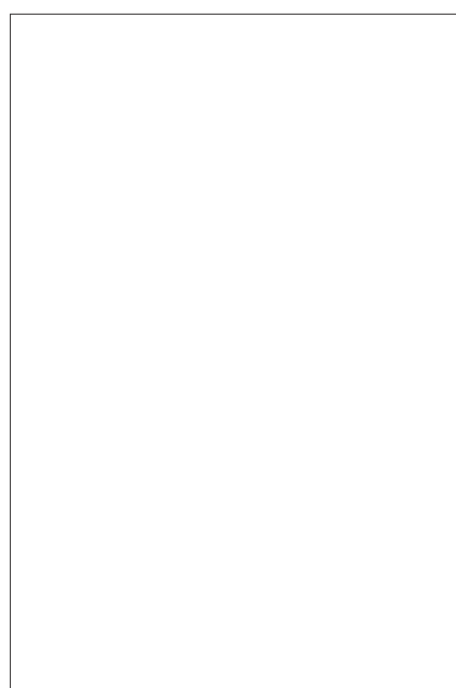
07. 手機保護殼和設備在無線充電器上的位置都會影響充電速度，離無線充電器的中心越遠，充電速度越慢。
08. 為了獲得最佳充電性能，請將您的手機與充電器中心處的線對準。如果您戴著手機，上面顯示充電指示，請將您的手機放置方式，請確保您的手機始終放置在無線充電器的中心處。

11. 如果移動電源發出異味、過熱、變色或變形，請立即停止使用。
12. 請勿使用含有化學品或液體清潔劑清潔本品。
13. 使用不當，摔落或過度用力可能會導致本品受損。

NCC警誡:
取得審驗證明之低功率射頻器材，非經核准，公司、商號或使用者均不得擅自變更線路、加大功率或變更設計之特性及功能。

表 1: 限制物質及其化學物質
Unit: 六角鎳 Cr+Ni Hexavalent chromium
Unit: 多環芳烴類 Polycyclic aromatic hydrocarbons
Unit: 鄰苯二氯苯 DDT Diphendyl ether

SHENZHEN TORRAS TECHNOLOGY CO., LTD.
Address: RM1215, B1.K.C, Zhanhua Technology BLDG, Minzhi Avenue, Minzhi St, Longhua DST, Shenzhen, China
© Shenzhen TORRAS Technology Co., Ltd. All Rights Reserved.
Made in China (shenzhen)



物料编码: YTP101212A
物料名称: 图拉斯1 支点O系列移动电源(Qi2.0)(10000mAh)(PB2C)说明书(英+繁体字)
结构部分: 材质: 银米祥合100克本白双胶纸; 成型尺寸: 60*90mm; 结构设计: 黄从峰; 结构修改: 日期: 2023.8.16

平面部分: 印刷颜色: K; 表面工艺: 骑马钉 (28p); 双面印刷, 单墨; 啤+折; 平面设计: 黄松下; 平面修改: 涂佳雨; 日期: 2024.5.27

特别说明: 所有物料需符合RoHS《有害物质限用管理程序》LH-VI-0004 (环保要求)

LOFFAN DESIGN 洛凡设计
TORRAS
YTP101212A