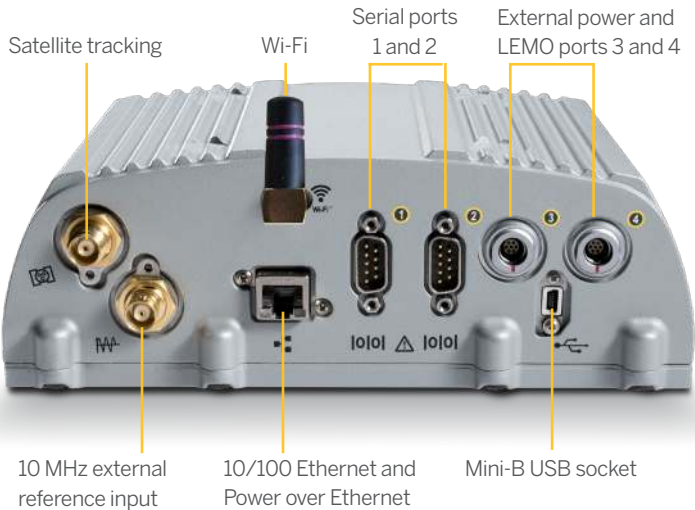




Alloy

RECEIVER



WHAT'S IN THE BOX

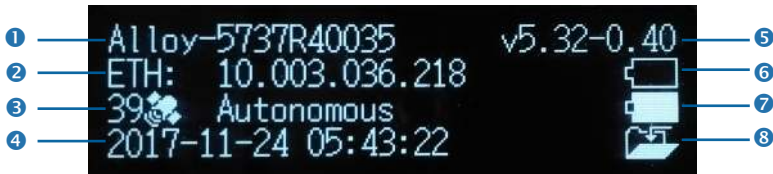
Description	
1	Alloy accessory kit, P/N 109ACC-00
2	Power supply, 65 W, 19 V, 3.43 A, 100-240 V AC, P/N 107000
	7
3	Power cord kit – USA, EU, UK, AUS, with a C7 connector, P/N 78651
	8
4	Power cord, 6 ft, Japan with a C7 connector, P/N 78656
	
5	1.5 m cable, DB9(F) Y to OS/7P/M to Power Jack, P/N 59044
	9
6	1.8 m cable, DB9/M-DB9/F, Data, P/N 19309-00
	
7	CBL 2M Ethernet 10BaseT CAT5, P/N 50150-00
8	Antenna 2.4 GHz stick antenna, SMA P/N 120030
9	USB Mini-B Plug Host to A Jack accessory cable, P/N 74399-00
10	USB Mini-B Plug to A Plug accessory cable, P/N 74408-00
11	Tripod clip, EM/TM3, P/N 41124 and Screws 6-32 x ¼ 100FM BLK SS NYL, P/N 27953
12	Smart battery, P/N 76767/176767
12	Smart battery, P/N 76767/176767
	

CONNECTING THE POWER CABLE (P/N 59044)

1. Remove the protection cap from either power port 3 or 4.
2. Remove the protection cap from the LEMO end of the cable.
3. Line up the red dot on the LEMO end of the cable with the red line on the LEMO socket of the respective power port3.
4. Insert the cable plug into the Alloy LEMO socket.
5. Connect the DC barrel connector to the power supply.



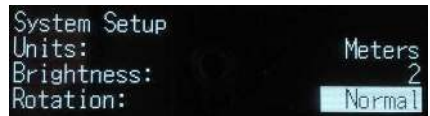
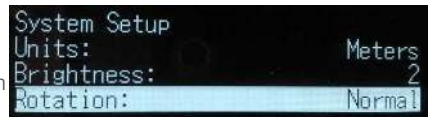
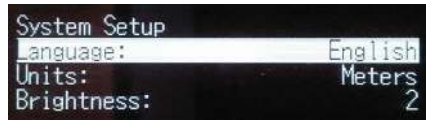
DISPLAY



Description	Description
1 Serial number	5 Firmware version
2 IP address	6 Battery 1
3 Number of satellites and positioning mode	7 Battery 2
4 UTC date and time	8 Logging status

Rotating the display

1. From the **Home** screen, press **↵**. The **System Setup** screen appears.
2. Press the down arrow until **Rotation** is highlighted. Press **↵**.
3. Press **↵** again. The **Rotation** setting is selected.
4. Press the right arrow key to select **Reversed** and then press **↵**. Note that the navigation arrow keys are also reversed.



Setting up the Wi-Fi

1. From the **Home** screen, press **↵**. The **System Setup** screen appears.
2. Press the down arrow key until **Wi-Fi Access Point** is highlighted. Press **↵**.
3. Press **↵** again to activate the **Disable/Enable** setting. If the **Wi-Fi Access Point** is disabled, press the down key to change to **Enable**. Press **↵** to save.
4. Press **Esc** twice to return to the **Home** screen.
5. Open a hand phone and navigate to the **System Settings** and **Wi-Fi** setup.
6. Select the serial number of the current receiver (for example, **AP 5737R0035**) and click to connect. The encryption is **WPA2** (usually automatic). The encryption type is **AES** (usually automatic). Type in the password **abcdeabcde**.
7. Press **OK**. The hand phone should be now connected to the Alloy receiver with a warning that there is "no Internet access".
8. Open a web browser on the hand phone. In the address bar, enter **192.168.142.1**. The Alloy web interface is now open on the phone.

```
Logging
Ethernet
Wi-Fi Client
Wi-Fi Access Point
```

```
Wi-Fi Access Point
Disable
SSID: 5737R40035
Set To Defaults:
```

```
Wi-Fi Access Point
Enable
SSID: 5737R40035
Set To Defaults:
```

Setting up the Ethernet

1. From the **Home** screen, press **↵**. The **System Setup** screen appears.
2. Press the down arrow key until **Ethernet** is highlighted. Press **↵**.
3. At **DHCP**, press **↵**. The **DHCP** setting is selected. If required, disable/enable DHCP.
4. If DHCP is disabled, using the arrow keys move to the **IP Address** field. Press **↵**. Enter your IP address (for example, **10.3.36.218**).
5. Using the arrow keys, move down to the **Netmask** field. Press **↵**. Enter the required netmask.
6. Using the arrow keys, move down to the **Gateway** field. Press **↵**. Enter the required gateway address.
7. When finished, press **↵** once, then press **Esc** to return to the **System Setup** screen.
8. Restart the receiver for the changes to take effect.
9. Open a web browser on a computer connected to the LAN. In the address bar, enter your IP address (for example, **10.3.36.218**). The Alloy web interface appears.

```
Antenna
Logging
Ethernet
Wi-Fi Client
```

```
Ethernet
DHCP: Disable
IP Address: 10.003.036.218
Netmask: 255.255.255.000
```

```
Ethernet
IP Address: 10.003.036.218
Netmask: 255.255.255.000
Gateway: 10.003.036.001
```

Help is available in the web interface, or go to realtimetworks.trimble.com/Trimble-Alloy.aspx.

