

Mi Wireless Outdoor Security Camera 1080p Set

User Manual



Read this manual carefully before use, and retain it for future reference.

Precautions

- The operating temperature range for this camera is -20°C to 50°C. Do not use this camera in environments with temperatures higher or lower than the specified operating range.
- This camera is a precision electronic product that has an IP65 waterproof rating. Do not expose this camera to extremely humid environments or locations that are prone to water getting into the camera, to avoid affecting normal use.
- The outdoor camera contains a battery, do not expose it to direct sunlight, fire, or other heat sources.
- To improve the camera's performance, do not place its lens facing or next to reflective surfaces, such as glass windows or white walls, as this will cause the image to appear overly bright in areas close to the camera and darker in areas further away, or cause the camera to produce completely white images.
- Ensure that the camera is installed in an area with a strong Wi-Fi signal. Do not install the camera near microwave ovens, and other objects or places that affect its Wi-Fi signal.
- When the night vision function is enabled or disabled, the outdoor camera will switch the IR cut-off filter, which may be accompanied by a slight clicking sound, which is normal.
- Please do not disassemble or replace the outdoor camera's battery yourself. Improper operation may result in an explosion hazard.
- Use in a low temperature environment or while charging will affect the standby time of this product. Please do not use the real-time footage function for a long time while charging to avoid the loss of battery life. The actual standby time is related to the usage environment and habits.

Product Overview

Package Contents



Outdoor Camera
(Including Battery)



Indoor Receiver



Mounting Template
Sticker



Charging Cable (1 m)



Ethernet Cable (2 m)



Wall Plug × 3



Screw × 3



Attention Sticker



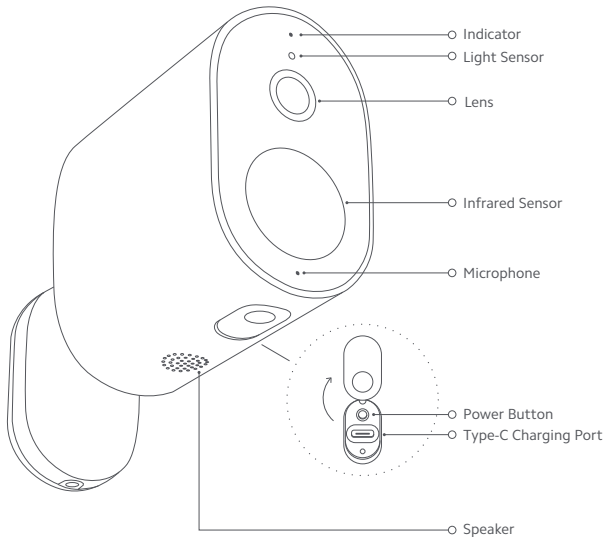
User Manual



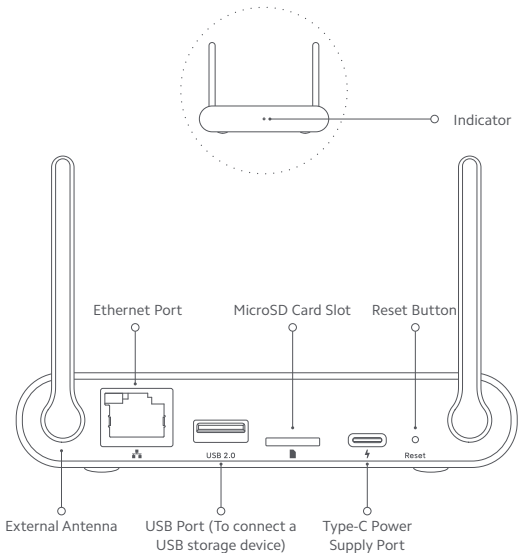
Warranty Notice

Note: Illustrations of product, accessories, and user interface in the user manual are for reference purposes only. Actual product and functions may vary due to product enhancements.

Outdoor Camera

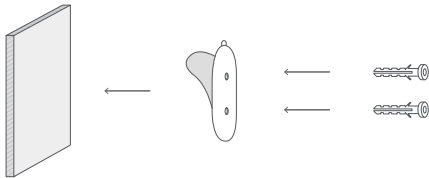


Indoor Receiver

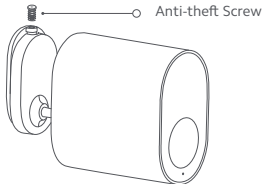


Outdoor Camera Installation

1. Paste the mounting template sticker on the wall.
2. Drill two holes in the wall according to the positions of the holes on the mounting template sticker, the holes should have a diameter of about 5 mm and a depth of about 26 mm.
3. Install the wall plugs into the drilled holes.

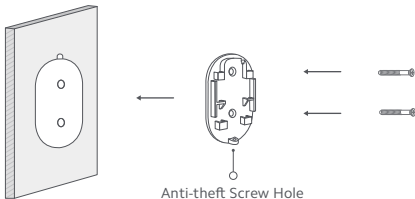


4. As shown in the figure, remove the anti-theft screw from the base and push the camera up to remove it from the base mounting plate.



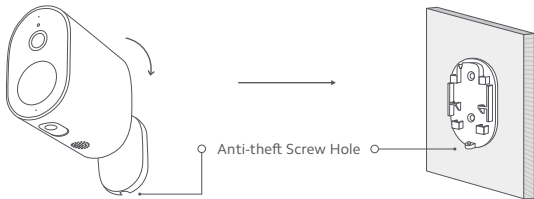
5. Install the base mounting plate on the wall with the screw.

Note: The anti-theft screw hole should face downwards.



6. Keep the button of the outdoor camera facing downwards and rotate the base of the outdoor camera 180° so that the anti-theft screw hole faces downwards.

7. Install the outdoor camera on the base mounting plate and tighten the anti-theft screw.



How to Use

Outdoor Camera

Charging: Connect the outdoor camera and charging cable, the indicator blinks red while charging, and turns off once it is fully charged.

Turning on/off: Once it is fully charged, briefly press the power button, the indicator will turn on (the indicator blinks orange and there is a voice notification when turned on for the first time), and the outdoor camera has been turned on successfully. Briefly press the power button, and the indicator and outdoor camera will turn off.

Reset: When turned on, press and hold the power button for 5 seconds, and the indicator will blink orange once it has been reset successfully.

Indoor Receiver

Turning on/off: Plug in the charging cable and power adapter and turn on the power, once the indicator light is on it has been turned on successfully. Unplug it from the power supply to turn it off.

Reset: While it is turned on, use the pin tool to press and hold the reset button for 3 seconds, once the indicator blinks orange it has been reset successfully.

Indicator Status

Outdoor Camera

Awaiting reset: Orange

Awaiting connection: Blinking orange

Connecting: Blinking blue

Connected: Off

Charging: Blinking red

Fully charged: Off

Indoor Receiver

Awaiting reset: Orange

Awaiting connection: Blinking orange

Connecting: Blinking blue

Connected: Blue

Connecting with Mi Home/Xiaomi Home App

- This product works with the Mi Home/Xiaomi Home app*. Use the Mi Home/Xiaomi Home app to control your device, and to interact with other smart home devices.
- Scan the QR code to download and install the app. You will be directed to the connection setup page if the app is installed already. Or search "Mi Home/Xiaomi Home" in the app store to download and install it.



- Open the home page of the Mi Home app, tap the + icon in the top right corner, enter the page to add devices, scan the QR code above or on the bottom of the indoor receiver, and connect it according to the instructions in the app. Once the indoor receiver has been connected successfully, the indicator is blue.
- Then follow the instructions in the app to continue to add outdoor cameras (scan the QR code of the outdoor camera body). Once the outdoor camera has been connected successfully, the indicator turns off and the voice notification informs you that it has been connected successfully.

Note:

- This product only supports connecting to a 2.4 GHz Wi-Fi network, and does not support 5 GHz Wi-Fi networks. The indoor receiver can also be connected with an Ethernet cable.
- The version of the app might have been updated, please follow the instructions based on the current app version.

Specifications

Name	Mi Wireless Outdoor Security Camera 1080p Set
Model	MWC13
Rated Input	5 V= 2 A
Outdoor Camera Dimensions	52.7 × 122 × 102.6 mm
Outdoor Camera Net Weight	273 g
Lens Angle	130°
Resolution	1920 × 1080
Aperture	F2.1
Video Codec	H.265
Night Vision Light	Eight 940 nm IR Lights
Operating Temperature	-20°C to 50°C
IP Rating	IP65
Battery Capacity	5700 mAh 3.65 V
Wireless Connectivity	Wi-Fi IEEE 802.11 b/g/n 2.4 GHz
Compatible with	Android 6.0 & iOS 10 or above
Wi-Fi Operation Frequency	2412–2472 MHz
Wi-Fi Maximum Output Power	<20 dBm

Indoor Receiver Dimensions	110 × 85 × 77.1 mm
Indoor Receiver Net Weight	88 g
Indoor Receiver Storage	MicroSD card (supports up to 32 GB)/USB mobile storage device/Cloud storage
Indoor Receiver Wired Connection	RJ45 Ethernet Port

Battery Safety

This device is equipped with a built-in battery that cannot be removed or replaced. Do not disassemble or modify the battery by yourself.

WEEE Information



All products bearing this symbol are waste electrical and electronic equipment (WEEE as in directive 2012/19/EU) which should not be mixed with unsorted household waste. Instead, you should protect human health and the environment by handing over your waste equipment to a designated collection point for the recycling of waste electrical and electronic equipment, appointed by the government or local authorities. Correct disposal and recycling will help prevent potential negative consequences to the environment and human health. Please contact the installer or local authorities for more information about the location as well as terms and conditions of such collection points.

CE Information



Hereby, Shanghai Moshon Technology Co., Ltd. declares that the radio equipment type MWC13 is in compliance with Directive 2014/53/EU. The full text of the EU declaration of conformity is available at the following internet address:

<http://www.mi.com/global/service/support/declaration.html>

Importer:

Beryko s.r.o.

Na Roudné 1162/76, 301 00 Plzeň

www.beryko.cz

Manufactured for: Xiaomi Communications Co., Ltd.

Manufactured by: Shanghai Moshon Technology Co., Ltd.

Address: No. 668 Xinzhuan Road, Songjiang Hi-Tech Park,
Caohejing Development Zone, Shanghai, China

For further information, please go to www.mi.com

User Manual Version: V1.0

