



© 2022 Yamaha Corporation
Published 10/2022
KSOD-B0

VFJ0200

UABGLVF

Yamaha Global Site
<https://www.yamaha.com/>

Yamaha Downloads
<https://download.yamaha.com/>

Subwoofer

Caisson de Grave

Subwoofer

Сабвуфер

Subwoofer

超重低音揚聲器

TRUE X SUB 100A

SW-X100A

Owner's Manual

EN

Mode d'emploi

FR

Manual de instrucciones

ES

Руководство пользователя

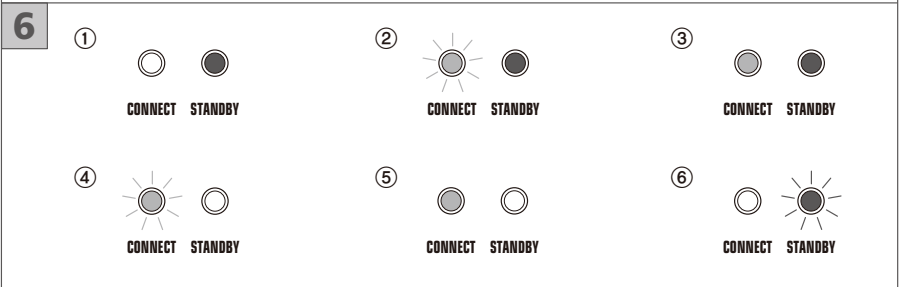
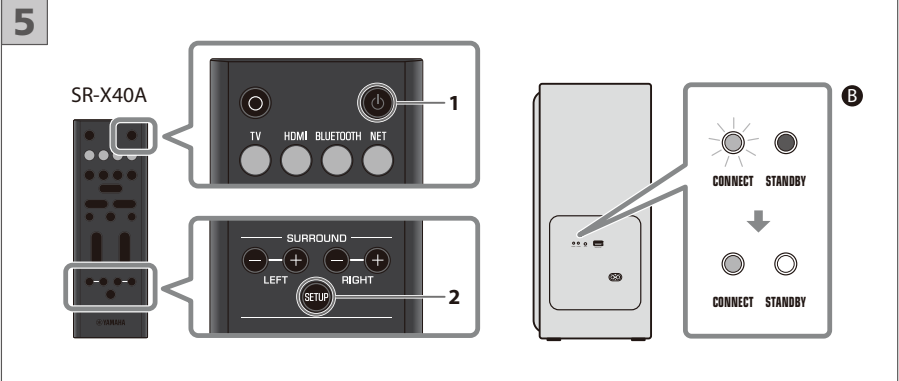
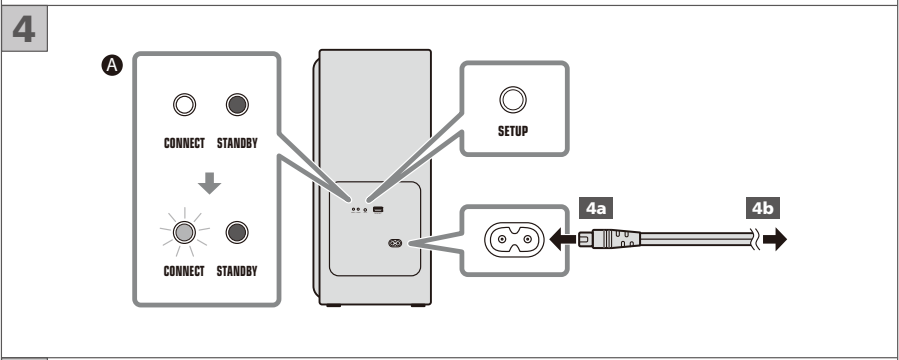
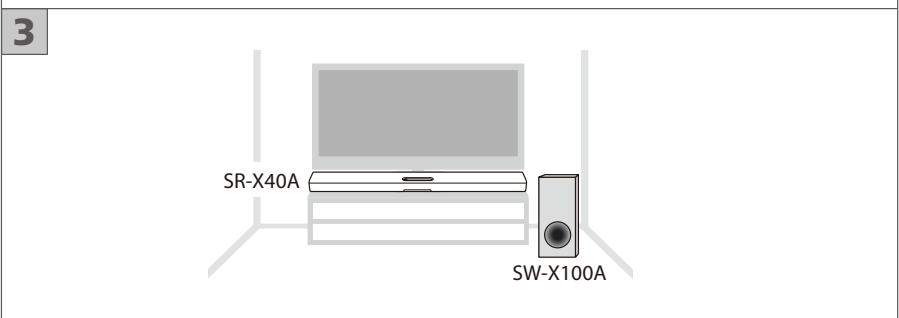
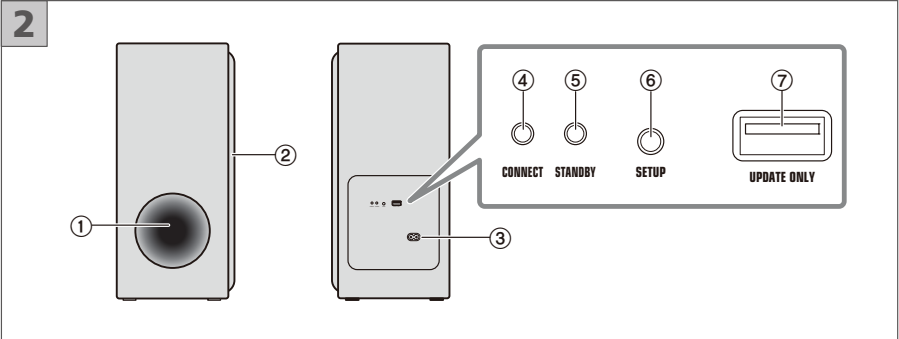
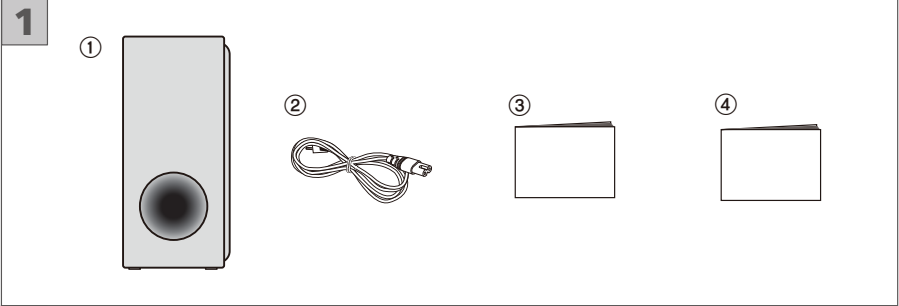
RU

Manual do Proprietário

PT

使用說明書

ZH-TW



This product is a dedicated subwoofer that wirelessly connects to the Yamaha TRUE X BAR 40A sound bar (SR-X40A). It adds rich bass to the sound of the sound bar.

For more information on connecting to the sound bar and instructions for using this product with the sound bar, also refer to the User Guide of the sound bar.

1 Included items

- ① Subwoofer
- ② Power cord
- ③ Owner's Manual (this manual)
- ④ Safety Brochure

2 Part names

- ① Bass reflex port
- ② Speaker
- ③ AC power input jack
- ④ CONNECT indicator
- ⑤ STANDBY indicator
- ⑥ SETUP button
- ⑦ UPDATE ONLY jack*

* Use to update the subwoofer's firmware. Refer to the instructions provided for the firmware for details.

3 Installing the subwoofer

To prevent the sound from reflecting off the wall, install the subwoofer at least 20 cm (8 in) away from the wall and point the front of the subwoofer slightly inward.

NOTE

Be sure to read the included Safety Brochure before installing the subwoofer.

4 Connecting the subwoofer to power

NOTE

Be sure to read the included Safety Brochure before connecting the subwoofer to power.

Connect the included power cord to the subwoofer (4a) and an AC wall outlet (4b).

When the subwoofer is connected to power, the STANDBY indicator on the rear of the subwoofer glows red. After approximately one minute, the CONNECT indicator will start flashing rapidly, and the subwoofer will be in the state of waiting for a connection to the sound bar (4). To manually set the subwoofer to the waiting-for-connection state, hold down the SETUP button on the rear of the subwoofer for at least 5 seconds.

5 Connecting to the sound bar (required only when connecting for the first time)

1 Turn on the sound bar.

2 Hold down the SETUP button on the sound bar's remote control for at least five seconds.

When the connection is established, the subwoofer turns on (6).

NOTE

- When the sound bar is turned off, the subwoofer also turns off at the same time. The next time the sound bar is turned on, the sound bar and subwoofer will be automatically connected.
- To terminate the connection to the sound bar, hold down the SETUP button on the rear of the subwoofer for at least five seconds.
- If the subwoofer cannot be connected to the sound bar, or if the sound is interrupted, try the following:
 - Move the subwoofer and/or the sound bar so that they are closer to each other.
 - Install the sound bar and subwoofer in positions where they are not obstructed from each other by metal furniture.
 - If a device emitting electromagnetic waves such as a wireless LAN device is located nearby, place the subwoofer and sound bar farther away from it.
- If the connection to the sound bar is interrupted for more than 20 minutes, the subwoofer will turn off (standby).
- If the connection is not established after following the procedure above, the firmware versions of the subwoofer and sound bar may not be compatible with each other. Update the firmware of the subwoofer and sound bar to the latest version.

6 Checking status via the indicators

The indicators on the rear of the subwoofer show its status.

Indicator display	Status of the subwoofer
① CONNECT (white): Off STANDBY (red): Glowing	In the process of turning on from plugged-in state / Not connected to the sound bar
② CONNECT (white): Flashing STANDBY (red): Glowing	Power off (standby) / Connecting to the sound bar <ul style="list-style-type: none"> • Flashing slowly: searching • Flashing rapidly: in the state of waiting for a connection to the sound bar / in the process of establishing the connection to the sound bar
③ CONNECT (white): Glowing STANDBY (red): Glowing	Power off / Connected to the sound bar
④ CONNECT (white): Flashing slowly STANDBY (red): Off	Power on / Communication with sound bar is interrupted (searching)
⑤ CONNECT (white): Glowing STANDBY (red): Off	Power on / Connected to the sound bar
⑥ CONNECT (white): Off STANDBY (red): Flashing	The protection circuitry has been activated. To protect the subwoofer, the power is prevented from being turned on. Unplug the power cord from the AC wall outlet and contact the nearest authorized Yamaha dealer or service center.

Firmware update

New firmware may be provided to add features or fix bugs.

See the information page for this product on the Yamaha website for details on how to update the firmware.

Specifications

Amplifier section	Maximum rated output power.....100 W
Speaker section	Type.....Bass reflex (non-magnetic shielding) Driver.....16 cm (6-1/2") cone x 1 Frequency response.....35 Hz to 100 Hz Impedance.....3 Ω
Wireless communication function	Radio frequency band.....5 GHz Models for U.K. and Europe Radio frequency.....5775 MHz to 5875 MHz Maximum output power (EIRP).....13.8 dBm (24.0 mW) Transmission range.....Approx. 10 m (33 ft) without interference
General	Power supply Models for U.S.A., Canada, Taiwan and Mexico.....AC 100 to 120 V, 50/60 Hz Models for U.K., Europe, and other areas.....AC 100 to 240 V, 50/60 Hz Power consumption.....18 W Standby power consumption (Network Standby) Models for U.S.A., Canada, Taiwan and Mexico.....2.0 W Models for U.K., Europe, and other areas.....2.0 W Dimensions (W x H x D).....187 x 407 x 409 mm (7-3/8" x 16" x 16-1/8") Weight.....9.4 kg (20.7 lb)



© 2022 Yamaha Corporation
Published 07/2022
KSOD-A0

VFJ0230

UAFL

Subwoofer

Caisson de Grave

Subwoofer

Сабвуфер

TRUE X SUB 100A

SW-X100A

Safety Brochure

EN

Brochure sur la Sécurité

FR

Folleto de Seguridad

ES

Брошюра по безопасности

RU

The model number, serial number, power requirements, etc., may be found on or near the name plate, which is at the rear of the unit. You should note this serial number in the space provided below and retain this manual as a permanent record of your purchase to aid identification in the event of theft.

Model No.

Serial No.

This applies only to products distributed by Yamaha Corporation America.

(1003-M06 plate rear en 01)

FCC INFORMATION (U.S.A.)

1. IMPORTANT NOTICE: DO NOT MODIFY THIS UNIT!

This product, when installed as indicated in the instructions contained in this manual, meets FCC requirements. Modifications not expressly approved by Yamaha may void your authority, granted by the FCC, to use the product.

2. IMPORTANT: When connecting this product to accessories and/or another product use only high quality shielded cables. Cable/s supplied with this product MUST be used. Follow all installation instructions. Failure to follow instructions could void your FCC authorization to use this product in the USA.

3. NOTE: This product has been tested and found to comply with the requirements listed in FCC Regulations, Part 15 for Class "B" digital devices. Compliance with these requirements provides a reasonable level of assurance that your use of this product in a residential environment will not result in harmful interference with other electronic devices. This equipment generates/uses radio frequencies and, if not installed and used according to the instructions found in the users manual, may cause interference harmful to the operation of other electronic devices. Compliance with FCC regulations does not guarantee that interference will not occur in all installations. If this product is found to be the source of interference, which can be determined by turning the unit "OFF" and "ON", please try to eliminate the problem by using one of the following measures:

- Relocate either this product or the device that is being affected by the interference.
- Utilize power outlets that are on different branch (circuit breaker or fuse) circuits or install AC line filter/s.
- In the case of radio or TV interference, relocate/reorient the antenna. If the antenna lead-in is 300 ohm ribbon lead, change the lead-in to co-axial type cable.

If these corrective measures do not produce satisfactory results, please contact the local retailer authorized to distribute this type of product. If you can not locate the appropriate retailer, please contact Yamaha Corporation of America, 6600 Orangethorpe Avenue, Buena Park, CA 90620, U.S.A. The above statements apply ONLY to those products distributed by Yamaha Corporation of America or its subsidiaries.

(0529-M04 FCC class B YCA 01)

COMPLIANCE INFORMATION STATEMENT (Supplier's declaration of conformity procedure)

Responsible Party : Yamaha Corporation of America
Address : 6600 Orangethorpe Avenue, Buena Park,
CA 90620, U.S.A.

Telephone : 714-522-9011
Type of Equipment : Subwoofer
Model Name : SW-X100A

This device complies with Part 15 of FCC Rules. Operation is subject to the following two conditions: (1) this device may not cause harmful interference, and (2) this device must accept any interference received, including interference that may cause undesired operation.

(0529-M02 FCC sdoc YCA 01)

NOTICE (For U.S.A.)

- This equipment complies with FCC radiation exposure limits set forth for an uncontrolled environment and meets the FCC radio frequency (RF) Exposure Guidelines. This equipment should be installed and operated keeping the radiator at least 20 cm or more away from person's body.
- This transmitter must not be co-located or operated in conjunction with any other antenna or transmitter.

NOTICE (For Canada)

- This equipment complies with ISED radiation exposure limits set forth for an uncontrolled environment and meets RSS-102 of the ISED radio frequency (RF) Exposure rules. This equipment should be installed and operated keeping the radiator at least 20 cm or more away from person's body.
- This device contains licence-exempt transmitter(s)/ receiver(s) that comply with Innovation, Science and Economic Development Canada's licence-exempt RSS(s). Operation is subject to the following two conditions:
 - 1. This device may not cause interference.
 - 2. This device must accept any interference, including interference that may cause undesired operation of the device.
- For indoor use only.

PRECAUTIONS

PLEASE READ CAREFULLY BEFORE USE. BE SURE TO FOLLOW THESE INSTRUCTIONS.

The precautions listed below are to prevent risk of harm to the user and others, as well as to prevent property damage, and to help the user use this unit properly and safely. Be sure to follow these instructions.

After reading this manual, be sure to keep it in a safe place where it can be referenced at any time.

- Be sure to request inspections or repairs from the dealer where you purchased the unit or from qualified Yamaha service personnel.
- Yamaha cannot be held responsible for injury to you or damage of the products caused by improper use or modifications to the unit, or data that is lost or destroyed.
- This product is for ordinary homes. Do not use for applications requiring high reliability, such as managing lives, health care or high-value assets.



WARNING

This content indicates "risk of serious injury or death."

If you notice any abnormality

- If any of the following abnormalities occur, immediately turn off the power and disconnect the power plug.
 - The power cord/plug is damaged.
 - An unusual smell, unusual sound or smoke is emitted from the unit.
 - Foreign material or water gets into the interior of the unit.
 - There is a loss of sound during use.
 - There is a crack or damage in the unit.
- Continued use could cause electric shocks, a fire, or malfunctions. Immediately request an inspection or repair from the dealer where you purchased the product or from qualified Yamaha service personnel.

Power supply

- Do not do anything that could damage the power cord.
 - Do not place it near a heater.
 - Do not bend it excessively or alter it.
 - Do not scratch it.
 - Do not place it under a heavy object.Using the power cord with the core of the cord exposed could cause electric shocks or a fire.
- Do not touch the power plug or cord if there is a chance of lightning.
Failure to observe this may cause electric shocks.
- Use this unit with the power supply voltage printed on it.
Failure to connect to an appropriate AC outlet may cause a fire, electric shocks, or malfunctions.
- Be sure to use the supplied power cord.
Failure to observe the above may cause a fire, burns, or malfunctions.
- Do not use the supplied power cord for other units.
Failure to observe the above may cause a fire, burns, or malfunctions.
- Check the electric plug periodically and remove any dirt or dust which may have accumulated on it.
Failure to observe this may cause a fire or electric shocks.
- When setting up the unit, make sure that the AC outlet you are using is easily accessible.
If some trouble or malfunction occurs, immediately turn off the power switch and disconnect the plug from the AC outlet. Even when the power switch is turned off, as long as the power cord is not unplugged from the wall AC outlet, the unit will not be disconnected from the power source.
- If not using the unit for long periods of time, be sure to unplug the power plug from the AC outlet.
Failure to observe this may cause a fire or malfunctions.

Do not disassemble

- Do not disassemble or modify this unit.
Failure to observe this may cause a fire, electric shocks, injury, or malfunctions.

Water warning

- Do not expose the unit to rain, use it near water or in damp or wet conditions, or place on it any containers (such as vases, bottles or glasses) containing liquids which might spill into any openings or places where water may drop. A liquid such as water getting into the unit may cause a fire, electric shocks, or malfunctions.
- Never insert or remove an electric plug with wet hands. Do not handle this unit with wet hands.
Failure to observe this may cause electric shocks or malfunctions.

Fire warning

- Do not place any burning items or open flames near the unit, since they may cause a fire.

Handling

- Be careful not to drop or apply strong impact to this unit.
Failure to observe this may cause electric shocks, a fire, or malfunctions.

Wireless unit

- Do not use this unit near medical devices or inside medical facilities.
Radio waves from this unit may affect electro-medical devices.
- Do not use this unit within 25 cm (6 in) of persons with a heart pacemaker implant or a defibrillator implant.
Radio waves from this unit may affect electro-medical devices, such as a heart pacemaker implant or defibrillator implant.



CAUTION

This content indicates "risk of injury."

Power supply

- Do not use an AC outlet where the power plug fits loosely when inserted.
Failure to observe this may cause a fire, electric shocks, or burns.
- When disconnecting the power plug, always hold the plug itself and not the cord.
Pulling by the cord can damage it and cause electric shocks or a fire.
- Insert the power plug firmly all the way into the AC outlet.
Using the unit when it is not plugged in sufficiently can cause dust to accumulate on the plug, causing a fire or burns.

Installation

- Do not place the unit in an unstable position where it might accidentally drop or fall over and cause injuries.
- When installing this unit, do not obstruct heat dissipation.
 - Do not cover it with any cloth.
 - Do not install it on a carpet or rug.
 - Do not block this unit's ventilation holes (cooling slits).
 - Do not install the unit in other ways than indicated.
 - Do not use the device in a confined, poorly-ventilated location.Failure to observe the above may trap heat inside the unit, causing a fire or malfunctions. Ensure that there is a adequate space around the unit: at least 20 cm (8 in) on top, 20 cm (8 in) on the sides, and 20 cm (8 in) on the rear.
- Do not install the unit in other ways than indicated. Failure to observe this may cause malfunctions or for the unit to fall and cause injury.
- Do not install the unit in places where it may come into contact with corrosive gases or salt air or places that have excessive smoke or steam.
Doing so may result in malfunction.
- Avoid being near the unit during a disaster, such as an earthquake.
Since the unit may turn over or fall and cause injury, quickly move away from the unit and go to a safe place.
- Before moving this unit, be sure to turn off the power switch and disconnect all connection cables.
Failure to observe this may damage the cables or cause you or someone else to trip and fall.

Hearing loss

- Do not use the unit for a long period of time at a high or uncomfortable volume level, since this can cause permanent hearing loss. If you experience any hearing loss or ringing in the ears, consult a physician.

Maintenance

- Remove the power plug from the AC outlet before cleaning the unit.
Failure to observe this may cause electric shocks.

Handling

- Do not insert your hand or fingers into the bass reflex port of the unit.
Failure to observe this may cause injury.
- Do not insert foreign materials such as metal or paper into the bass reflex port of the unit.
Failure to observe this may cause a fire, electric shocks, or malfunctions.
- Be sure to observe the following:
 - Do not stand or sit on the unit.
 - Do not put heavy items on top of the unit.
 - Do not place the unit in a stack.
 - Do not lean against the unit.Failure to observe these may cause injuries or damage to the unit.
- Do not operate the unit if the sound is distorting.
Prolonged use in this condition could cause overheating and result in fire.

Notice

Indicates points that you must observe in order to prevent product failure, damage or malfunction and data loss.

Power supply

- If not using the unit for a long period of time, be sure to unplug the power plug from the outlet. Even if this unit is turned off, a minute current is still flowing.

Installation

- Do not use this unit in a location that is exposed to direct sunlight that becomes extremely hot, such as near a heater, or extremely cold, or that is subject to excessive dust or vibration. Failure to observe this may cause the unit's panel to become deformed, the internal components to malfunction, or for operation to become unstable.
- If using a wireless function, avoid installing this unit near metal walls or desks, microwave ovens, or other wireless network devices.
Obstructions could shorten the transmission distance.

Handling

- Do not place vinyl, plastic, or rubber products on this unit.
Failure to observe this may cause discoloration or deformation in the panel of this unit.
- If the ambient temperature changes drastically (such as during unit transportation or under rapid heating or cooling) and there is a chance condensation may have formed in the unit, leave the unit for several hours without turning on the power until it is completely dry before use. Using the unit while there is condensation can cause malfunctions.

Maintenance

- If the temperature or humidity changes drastically, water droplets (condensation) may form on the unit surface. If water droplets form, immediately wipe them off with a soft cloth. If water droplets are left on the unit, they may be absorbed into the wooden parts, causing deformation.
- When cleaning the unit, use a dry, soft cloth. Using chemicals such as benzine or thinner, cleaning agents, or chemical scrubbing cloths can cause discoloration or deformation.

Speakers

- Do not touch the speaker unit. Failure to observe this may damage the speaker unit.

Disposal or transfer

- If you plan to transfer ownership of this product, include this document and the supplied accessories along with the product.
- Follow the rules of your local authority to dispose of this product and its accessories.

Information

About functions included in the unit

- Air may be blown out from the bass reflex port. This is not a malfunction. This occurs particularly often when outputting music with heavy bass.
- The wireless function of this unit will be inactive when the power plug is disconnected from an AC outlet. Even if this unit is turned off while the power plug is connected, the wireless function of this unit remains activated.

This product uses third party software programs.

For the copyright and the license agreement terms and conditions of third party software programs that are used, see the following website.

https://manual.yamaha.com/av/cm/sla/21/sr_ws/

Yamaha Global Site
<https://www.yamaha.com/>

Yamaha Downloads
<https://download.yamaha.com/>

Requesting a Firmware Update on This Product**EN**

Please update to the latest firmware to enhance your product's performance. Scan the QR code or visit the following web address, then follow the steps to update your product.

Demande de mise à jour du microprogramme intégré dans ce produit**FR**

Veillez mettre à jour le dernier microprogramme pour améliorer les performances de votre produit. Scannez le code QR ou visitez l'adresse Web suivante, puis suivez les étapes pour mettre à jour votre produit.

Anfordern einer Firmware-Aktualisierung für dieses Produkt**DE**

Bitte aktualisieren Sie auf die neueste Firmware, damit Ihr Produkt sein Potenzial voll entfalten kann. Scannen Sie den QR-Code oder besuchen Sie die nachstehende Web-Adresse, um Ihr Produkt dann den Anweisungen folgend zu aktualisieren.

Begära en firmware-uppdatering för denna produkt**SV**

Uppdatera till den senaste firmware för att förbättra din produkts prestanda. Skanna QR-koden eller gå till följande webbadress. Följ sedan stegen för att uppdatera din produkt.

Richiesta di un aggiornamento del firmware su questo prodotto**IT**

Si prega di aggiornare all'ultimo firmware per migliorare le prestazioni del prodotto. Scansiona il codice QR o visita il seguente indirizzo Web, quindi segui i passaggi per aggiornare il tuo prodotto.

Solicitar una actualización de firmware en este producto**ES**

Actualice al firmware más reciente para mejorar el rendimiento de su producto. Escanee el código QR o visite la siguiente dirección web y, a continuación, siga los pasos para actualizar su producto.

Solicitação de atualização do Firmware neste Produto**PT**

Por favor, atualize o firmware para a última versão para melhorar o desempenho do seu produto. Digitalize o código QR ou visite o seguinte endereço web e siga os passos para atualizar seu produto.



https://manual.yamaha.com/av/fwupdate/21/sr_ws/





**IMPORTANT NOTICE FOR AUDIO & VISUAL PRODUCTS:
U.S. LIMITED WARRANTY Information for Customers in the United States**

For detailed information about the Limited Warranty for this product,
please see the warranty terms available at: yamaha.io/audiovisualwarranty.

Customer Service

Yamaha Corporation of America
6600 Orangethorpe Ave., Buena Park, CA 90620
Phone: 800-292-2982

PART# VED7670

YAMAHA AUDIO WARRANTY

Yamaha Canada Music Ltd. warrants to the original purchaser of its audio products that such products are free from defects in workmanship and materials as follows:

Product	Warranty Period from date of Original Purchase
* Receivers, Amplifiers, Tuners, Compact Disc Players, Digital Sound Projectors, Speaker Systems and Subwoofers purchased individually	2 years
* DVD Players, CD Recorders, Blu-ray Disc Players, Network Music Players and Commanders, Clock Radios, iPod Speaker Systems, Powered Multimedia Speakers, Headphones, Earphones, Integrated Systems (Receiver or Amplifier combined or on same chassis with an Optical Disc Player along with any included Speakers), Accessories	1 year
* Lamp Cartridge for Projectors.....	180 days

Subject to the following terms and conditions if any Yamaha Canada Music Ltd. audio products become defective during the applicable warranty period. Yamaha Canada Music Ltd. will repair such product without charge, including both parts and labour.

Terms and Conditions:

1. Defective units must be returned to an authorized Yamaha Audio Service Centre together with a complete description of the defect, and Bill of Sale.
2. Any transportation, packing and insurance arrangements are the responsibility of the owner.
3. This warranty does not cover normal maintenance of the products and is subject to the products being properly maintained in accordance with the maintenance instructions contained in the Yamaha Owner's Manual.
4. This Warranty does not cover:
 - a) Physical damage due to abuse:
 - b) Shipping damage.
 - c) Burned voice coils on tweeter and midrange speakers (caused by amplifier chipping, i.e. operation of amplifier beyond rated wattage.)
 - d) Burned voice coils on woofers (caused by overpowering the speakers, i.e. operation of amplifier at power levels beyond speaker capability).
 - e) Performance checks.
 - f) Interconnection cables and FM antennas.
 - g) Blown fuses caused by improper operation.
5. This warranty does not cover products which have been altered or repaired other than by an authorized Yamaha Audio Service Centre, or products whose trademark name, model, or serial number have been altered or removed.
6. THIS WARRANTY COVERS ONLY NEW AND UNUSED MERCHANDISE SOLD BY AUTHORIZED YAMAHA AUDIO DEALERS IN CANADA, AND SUBJECT TO NORMAL CONSUMER USE, BY THE ORIGINAL PURCHASER.
7. This warranty does not apply to Yamaha Canada Music Ltd. audio products sold in Saskatchewan, and to which statutory warranties contained in The Consumer Products Warranties Act, 1977 (Saskatchewan) are applicable.
8. This warranty is void where prohibited by law.

Factory Service Centre located at:

135 Milner Avenue, Scarborough, Ontario, M1S 3R1.
(416) 298-1311
http://ca.yamaha.com/en/support/getting_service/

For the location of other service centres, contact any Yamaha Audio Dealer or the above.

A WARRANTY REGISTRATION CARD IS NOT REQUIRED.

PLEASE KEEP YOUR BILL OF SALE AS PROOF OF PURCHASE SHOULD WARRANTY REPAIRS BE REQUIRED.



Product Registration

Thank you for purchasing a Yamaha product.
To help us provide better services to our customers via the Internet, we encourage you to complete product registration.

<http://4wrd.it/MEMBER>



Enregistrement du Produit

Merci d'avoir acheté un produit Yamaha.
Pour nous aider à fournir un meilleur service à nos clients via Internet, nous vous encourageons à compléter l'enregistrement du produit

<http://4wrd.it/MEMBER>



Produktregistrierung

Vielen Dank, dass Sie sich für ein Yamaha Produkt entschieden haben.
Damit wir unseren Kunden den bestmöglichen Service auch über das Internet anbieten können, empfehlen wir Ihnen, eine Produktregistrierung abzuschließen.

<http://4wrd.it/MEMBER>



Registrazione Prodotto

Grazie per avere comprato un prodotto Yamaha.
Al fine di migliorare i nostri servizi online, vi preghiamo completare la registrazione del Suo prodotto.

<http://4wrd.it/MEMBER>



产品注册

谢谢您购买雅马哈产品。
您完成产品注册后，能够得到我们提供的更完备的在线服务。

<http://4wrd.it/MEMBER>



Регистрация продукта

Благодарим вас за покупку продукта Yamaha.
Чтобы помочь нам предоставлять лучшие услуги нашим клиентам через Интернет, мы рекомендуем вам пройти регистрацию продукта.

<http://4wrd.it/MEMBER>



제품 등록

야마하 제품을 구매해 주셔서 감사합니다.
인터넷을 통해 고객에게 더 나은 서비스를 제공할 수 있도록 제품 등록을 완료하시기 바랍니다.

<http://4wrd.it/MEMBER>





Worldwide Representative Offices

VFE6330

For details of products, please contact your nearest Yamaha representative or the authorized distributor listed below.
Pour plus de détails sur les produits, contactez votre représentant Yamaha le plus proche de chez vous ou le distributeur agréé indiqué ci-dessous.

Visit the following website for the latest information.

Visitez le site Web suivant pour les toutes dernières informations.



<https://manual.yamaha.com/av/support/avsalesrep.html>

NORTH AMERICA

CANADA

Yamaha Canada Music Ltd.
135 Milner Avenue, Tronto, Ontario M1S 3R1,
Canada

U.S.A.

Yamaha Corporation of America
6600 Orangethorpe Avenue, Buena Park,
CA 90620, USA

CENTRAL & SOUTH AMERICA

MEXICO

Yamaha de México, S.A. de C.V.
Av. Insurgentes Sur 1647 Piso 9, Col. San José
Insurgentes, Delegación Benito Juárez, CDMX,
C.P. 03900, México

BRAZIL

Yamaha Musical do Brasil Ltda.
Praça Professor José Lannes, 40, Cjs 21 e 22,
Brooklin Paulista Novo CEP 04571-100
– São Paulo – SP, Brazil

ARGENTINA

Yamaha Music Latin America, S.A.
Sucursal Argentina
Olga Cossettini 1553, Piso 4 Norte
Madero Este-C1107CEK
Buenos Aires, Argentina

PANAMA AND OTHER LATIN AMERICAN COUNTRIES / CARIBBEAN COUNTRIES

Yamaha Music Latin America, S.A.
Edificio Torre Davivienda, Piso: 20
Avenida Balboa, Marbella, Corregimiento de Bella
Vista, Ciudad de Panamá, Rep. de Panamá

EUROPE

EUROPEAN COUNTRIES

Yamaha Music Europe GmbH
Siemensstrasse 22-34, 25462 Rellingen, Germany

RUSSIA

Yamaha Music (Russia) LLC.
Room37, entrance 7, bld. 7, Kievskaya street,
Moscow, 121059, Russia

AFRICA

Yamaha Music Gulf FZE

JAFZA-16, Office 512, P.O.Box 17328, Jabel Ali FZE,
Dubai, U.A.E



Head Office: Yamaha Corporation

10-1, Nakazawa-cho, Naka-ku, Hamamatsu, 430-8650, Japan

Importer (European Union): Yamaha Music Europe GmbH

Siemensstrasse 22-34, 25462 Rellingen, Germany

Importer (United Kingdom): Yamaha Music Europe GmbH (UK)

Sherbourne Drive, Tilbrook, Milton Keynes, MK7 8BL, United Kingdom

Manual Development Group

© 2014 Yamaha Corporation

Published 03/2021 KS-10

MIDDLE EAST

TURKEY

Yamaha Music Europe GmbH
Merkezi Almanya Türkiye Istanbul Subesi
Mor Sumbul Sokak Varyap Meridian Business
1.Blok No:1 113-114-115
Bati Atasehir Istanbul, Turkey

OTHER REGIONS

Yamaha Music Gulf FZE
JAFZA-16, Office 512, P.O.Box 17328, Jabel Ali FZE,
Dubai, U.A.E

ASIA

THE PEOPLE'S REPUBLIC OF CHINA

Yamaha Music & Electronics (China) Co., Ltd.
2F, Yunhedasha, 1818 Xinzha-lu, Jingan-qu,
Shanghai, China

INDIA

Yamaha Music India Private Limited
P-401, JMD Megapolis, Sector-48, Sohna Road,
Gurgaon-122018, Haryana, India

INDONESIA

PT Yamaha Musik Indonesia Distributor
PT. Nusantik
Yamaha Music Center Bldg., Jalan Jend. Gatot
Subroto Kav. 4, Jakarta 12930, Indonesia

REPUBLIC OF KOREA

Yamaha Music Korea Ltd.
11F, Prudential Tower, 298, Gangnam-daero,
Gangnam-gu, Seoul, 06253, Korea

MALAYSIA

Yamaha Music (Malaysia) Sdn., Bhd.
No.8, Jalan Perbandaran, 47301 Kelana Jaya,
Petaling Jaya, Selangor, Malaysia

SINGAPORE

Yamaha Music (Asia) PRIVATE LIMITED
Block 202 Hougang Street 21, #02-00,
Singapore 530202, Singapore

TAIWAN

Yamaha Music & Electronics Taiwan Co., Ltd.
2F., No.1, Yuandong Rd. Banqiao Dist.
New Taipei City 22063 Taiwan (R.O.C.)

THAILAND

Siam Music Yamaha Co., Ltd.
3, 4, 15, 16th Fl., Siam Motors Bldg.,
891/1 Rama 1 Road, Wangmai, Pathumwan,
Bangkok 10330, Thailand

VIETNAM

Yamaha Music Vietnam Company Limited
15th Floor, Nam A Bank Tower
201-203 Cach Mang Thang Tam St., Ward 4, Dist.3,
Ho Chi Minh City, Vietnam

OTHER REGIONS

Yamaha Corporation
Nakazawa-cho 10-1, Naka-ku, Hamamatsu,
Japan 430-8650

OCEANIA

AUSTRALIA / NEW ZEALAND

Yamaha Music Australia Pty. Ltd.
Level 1, 80 Market Street, South Melbourne,
VIC 3205 Australia