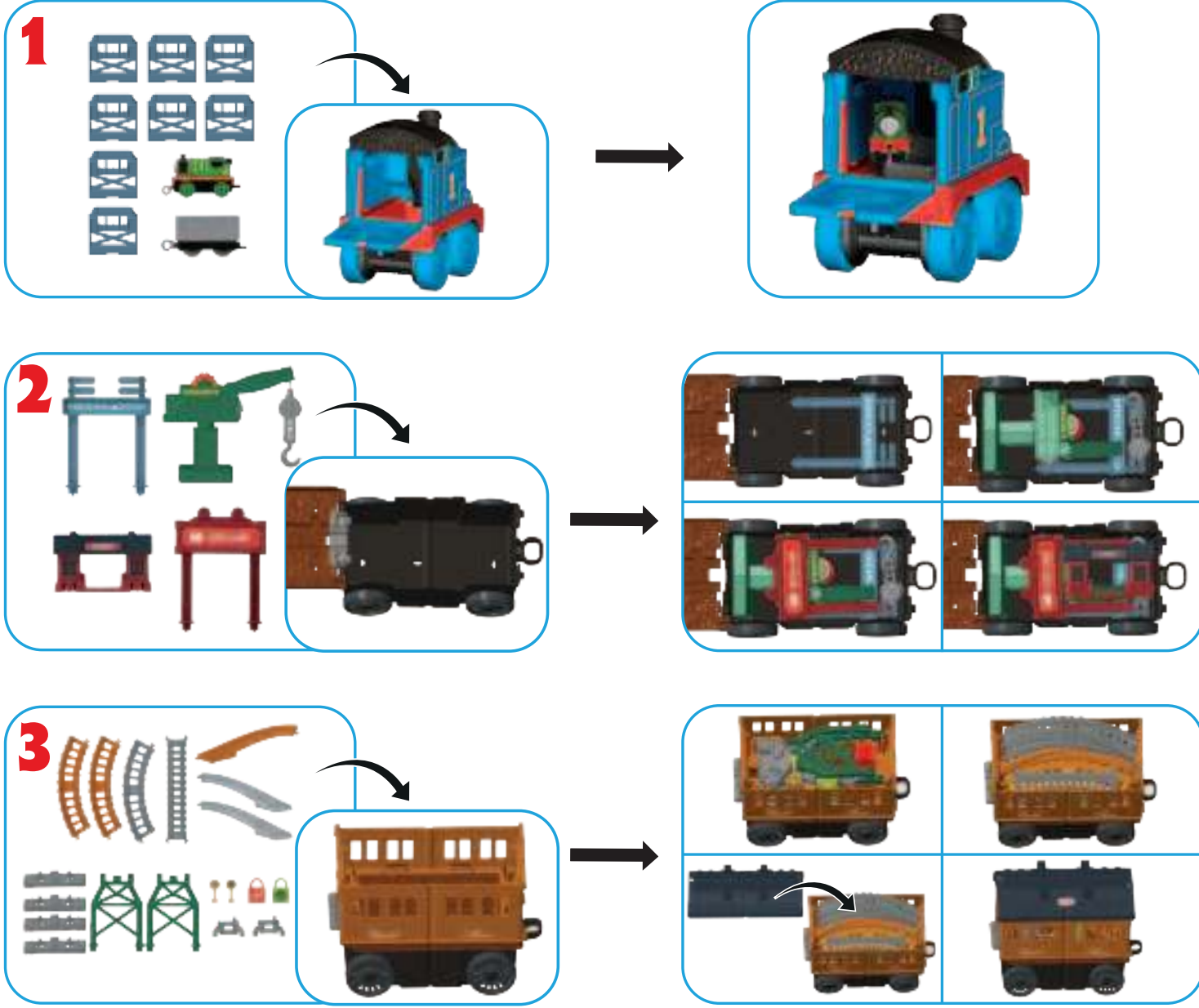


Storage



UNITED STATES
Fisher-Price, Inc., 636 Girard Avenue,
East Aurora, NY 14052.
Consumer Services: 1-800-432-5437.
CANADA
Mattel Canada Inc., 6155 Freemont Blvd.,
Mississauga, Ontario L5R 3W2. Consumer
Services/Service à la clientèle :
1-800-432-5437.
www.service.mattel.com.

service.mattel.com

GREAT BRITAIN

Mattel U.K. Limited, The Porter Building, 1 Brunel Way,
Slough SL1 1FQ, UK. www.service.mattel.com/uk.
NEDERLAND
Mattel Europa B.V., Gondel 1, 1186 MJ Amstelveen, Nederland.

AUSTRALIA
Mattel Australia Pty. Ltd., 658 Church Street, Locked Bag #870,
Richmond, Victoria 3121 Australia. Consumer Advisory Service
1300 135 312.
NEW ZEALAND
16-18 William Pickering Drive, Albany 1331, Auckland.
SOUTH AFRICA
Mattel South Africa (PTY) LTD, Office 102 I3, 30 Melrose Boulevard,
Johannesburg 2196.

CREATED BY BRIT ALLCROFT

Based on the Railway Series by The Reverend W Awdry.
©2021 Gullane (Thomas) Limited. Thomas the Tank
Engine & Friends™ and Thomas & Friends™
are trademarks of Gullane (Thomas) Limited.
©2021 HIT Entertainment Limited. HIT and the HIT logo
are trademarks of HIT Entertainment Limited.

©2021 Mattel. ® and ™ designate U.S. trademarks of Mattel,
except as noted. **PRINTED IN CHINA.** Mattel East Asia Ltd., Room 503-09,
North Tower, World Finance Centre, Harbour City, Tsimshatsui, HK,
China. Tel.: (852) 3185-6500.



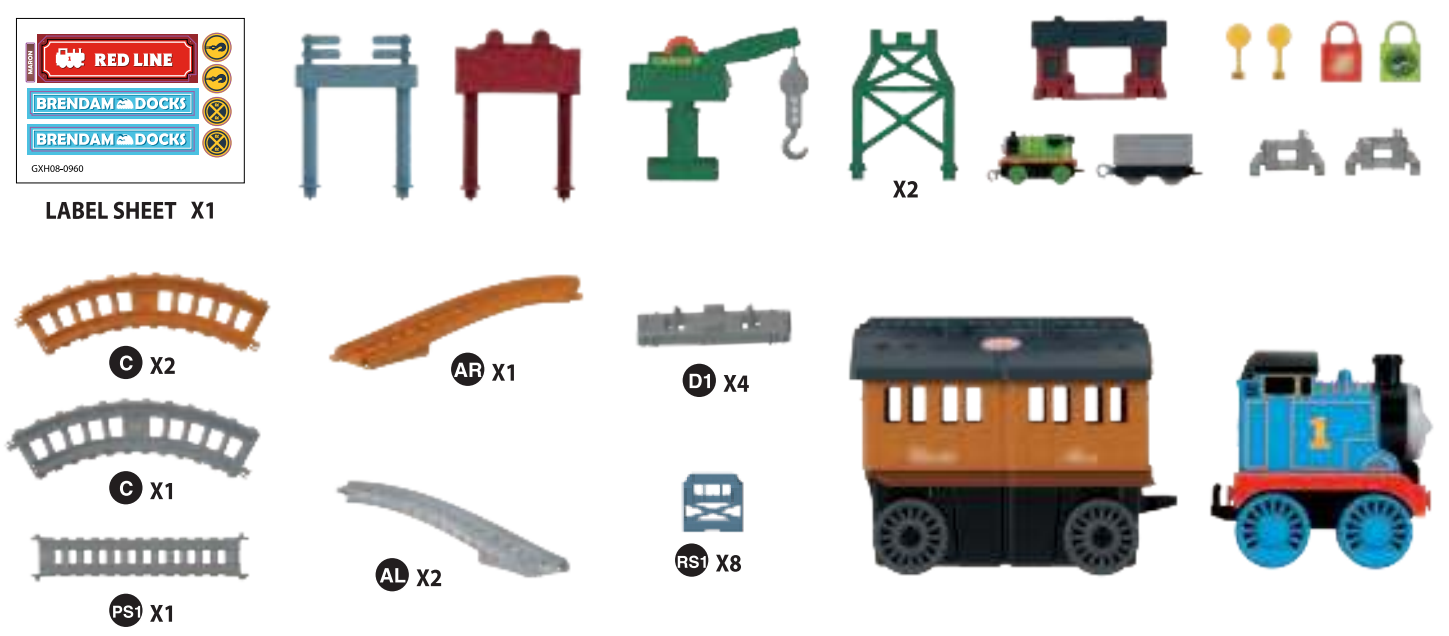
GXH08-0970-1102615434-DOM

THOMAS & FRIENDS™ 2-IN-1 TRANSFORMING THOMAS PLAYSET

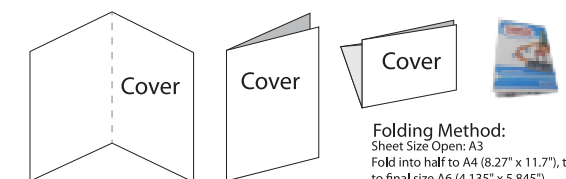


INSTRUCTIONS
Keep these instructions for future reference as they contain important information.

What's Included

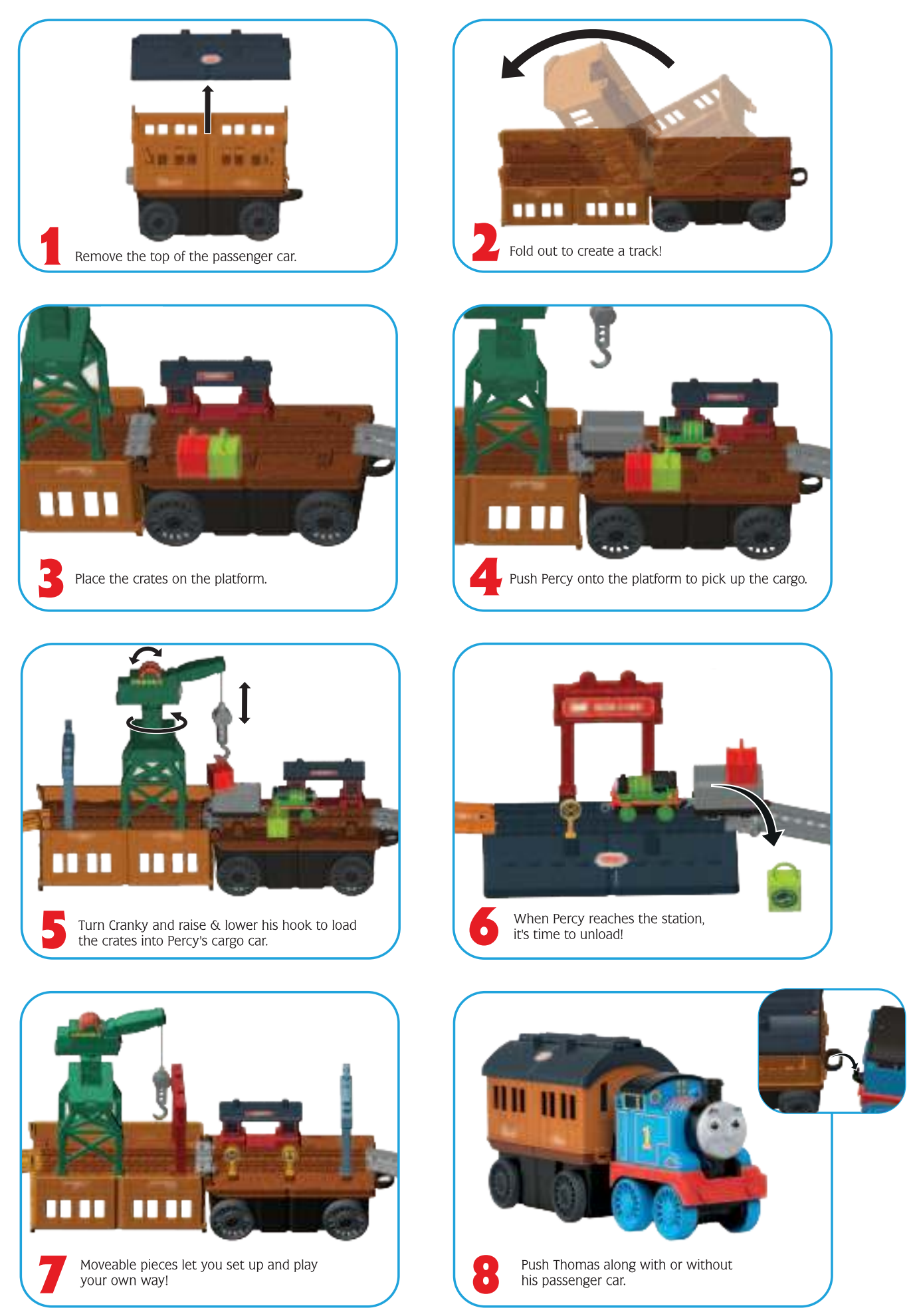


Helpful Hints

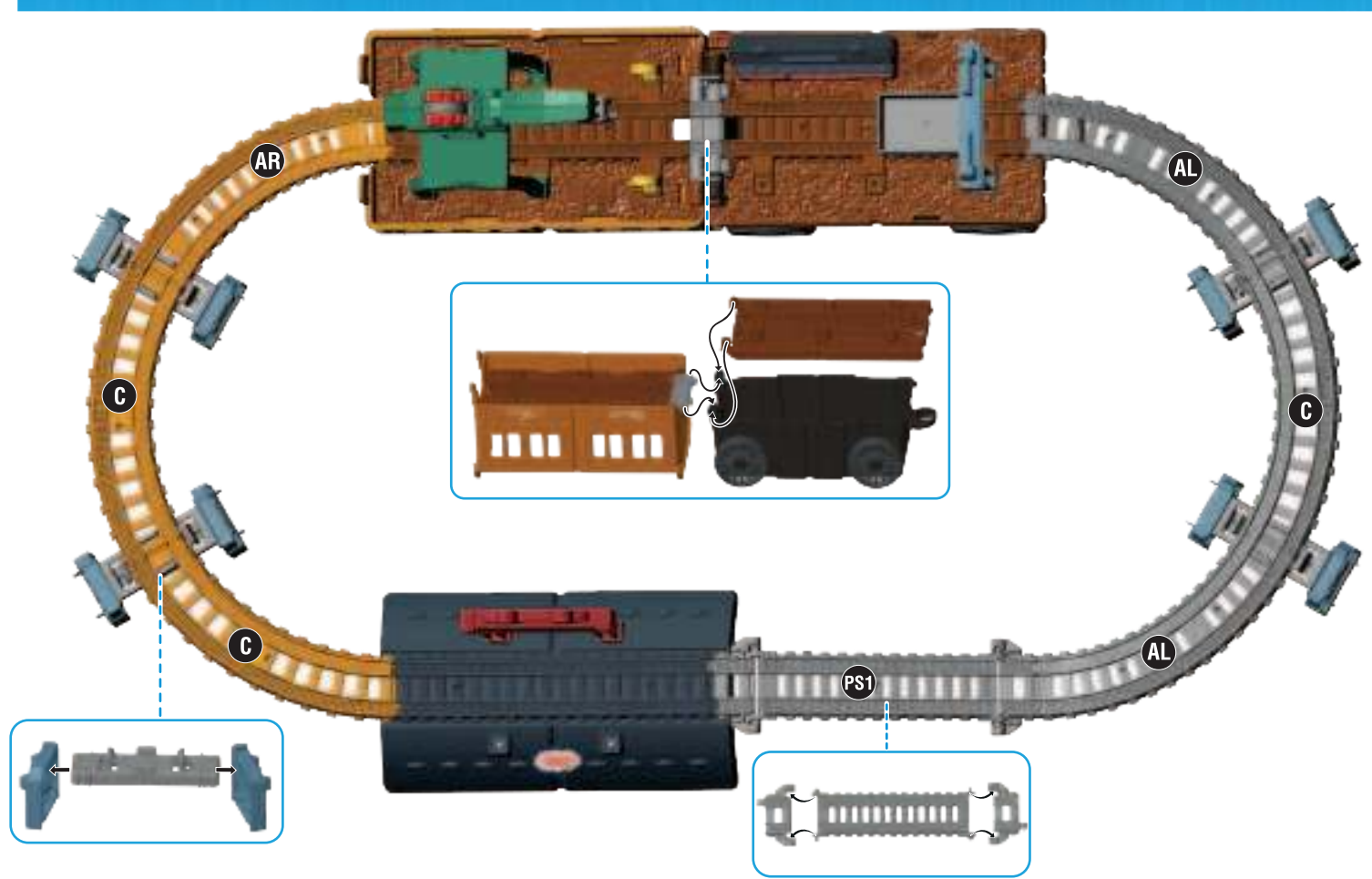


Item No : GXH08-0970
1102615434-DOM
Size : A3
Paper : 70gsm FSC mix woodfree paper
Color : 4C
Date : 2/9/2021 (Sara Huang)

How To Play



Track Layout



Assembly

